

Product datasheet for RC213744

CLEC12A (NM_201623) Human Tagged ORF Clone

Product data:

Product Type:	Expression Plasmids
Product Name:	CLEC12A (NM_201623) Human Tagged ORF Clone
Tag:	Myc-DDK
Symbol:	CLEC12A
Synonyms:	CD371; CLL-1; CLL1; DCAL-2; MICL
Mammalian Cell Selection:	Neomycin
Vector:	pCMV6-Entry (PS100001)
E. coli Selection:	Kanamycin (25 ug/mL)
ORF Nucleotide Sequence:	>RC213744 representing NM_201623. Blue=ORF Red=Cloning site Green=Tag(s)

```
GCTCGTTTGTAGTGAACCGTCAGAATTTTGTAAACGACTCACTATAGGGCCGCCGGGAATTCGTCGACTG
GATCCGGTACCGAGGAGATCTGCCGCCGCGATCGCC
ATGTCTGAAGAAGTTACTTATGCAGATCTTCAATTCAGAACTCCAGTGAGATGGAAAAATCCCAGAA
ATTGGCAAATTTGGGAAAAAGTTCACGTAACCTTTGAAGATAGAAATGAAAAAATGAACAACTACAA
AACATCAGTGAAGAGCTCCAGAGAAATATTTCTCACTGATGAGTAACATGAATATCTCCAACAAG
ATCAGGAACCTCTCCACCACACTGCAAACAATAGCCACCAAAATTATGTCGTGAGCTATATAGCAAAGAA
CAAGAGCACAAAATGTAAGCCTTGTCCAAGGAGATGGATTTGCCATAAGGACAGCTGTTATTTCTAAGT
GATGATGTCCAAACATGGCAGGAGAGTAAAATGGCCTGTGCTGCTCAGAATGCCAGCCTGTTGAAGATA
AACAAACAAAATGCATTGGAATTTATAAAATCCCAGAGTAGATCATATGACTATTGGCTGGGATTATCT
CCTGAAGAAGATTCCACTCGTGGTATGAGAGTGGATAATAATAACTCCTCTGCTGGGTTATAAGA
AACGCACCTGACTTAAATAACATGTATTGTGGATATAAATAGACTATATGTTCAATATTACTGC
ACTTATAAACAAAGAATGATATGTGAGAAGATGGCCAATCCAGTGCAGCTTGTTCTACATATTTTAGG
GAGGCA
ACGCGTACGCGGCCGCTCGAGCAGAACTCATCTCAGAAGAGGATCTGGCAGCAAATGATATCCTGGAT
TACAAGGATGACGACGATAAGGTTTAAACGGCCGGC
```

Protein Sequence:	>Peptide sequence encoded by RC213744 Blue=ORF Red=Cloning site Green=Tag(s)
-------------------	---------------------------------------------------------------------------------

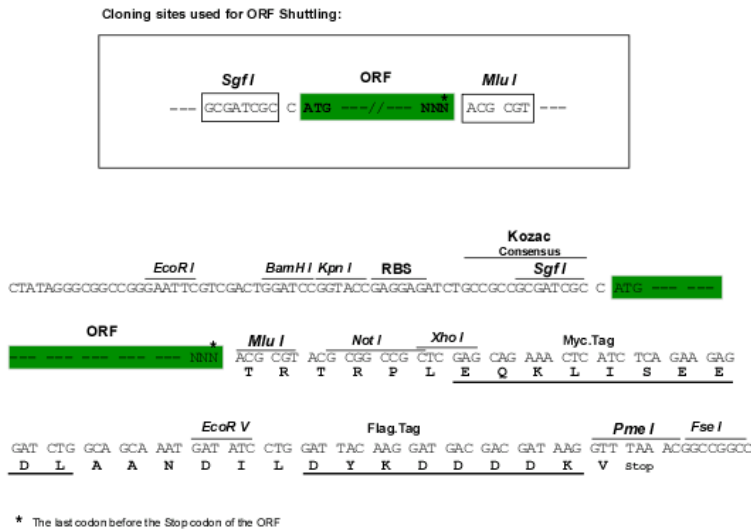
```
MSEEVTYADLQFQNSSEMEKIPEIGKFGEKVHVTLKIEMKMNKLQNISEELQRNISLQLMSNMNISNK
IRNLSTTLQTIATKLCRELYSKEQEHKCKPCPRRWIWHKDSYFLSDDVQTWQESKMACAAQNASLLKI
NNKNALEFIKSQRSYDYWLGLSPEEDSTRGMRVDNIINSSAWVIRNAPDLNMYCGYINRLYVQYYHC
TYKQRMICEKMANPVQLGSTYFREA
TRTRPLEQKLISEEDLAANDILDYKDDDDKV
```



Chromatograms: https://cdn.origene.com/chromatograms/ja1520_d05.zip

Restriction Sites: SgfI-MluI

Cloning Scheme:



ACCN: NM_201623

ORF Size: 696 bp

OTI Disclaimer: The molecular sequence of this clone aligns with the gene accession number as a point of reference only. However, individual transcript sequences of the same gene can differ through naturally occurring variations (e.g. polymorphisms), each with its own valid existence. This clone is substantially in agreement with the reference, but a complete review of all prevailing variants is recommended prior to use. [More info](#)

OTI Annotation: This clone was engineered to express the complete ORF with an expression tag. Expression varies depending on the nature of the gene.

Components: The ORF clone is ion-exchange column purified and shipped in a 2D barcoded Matrix tube containing 10ug of transfection-ready, dried plasmid DNA (reconstitute with 100 ul of water).

Reconstitution Method:

1. Centrifuge at 5,000xg for 5min.
2. Carefully open the tube and add 100ul of sterile water to dissolve the DNA.
3. Close the tube and incubate for 10 minutes at room temperature.
4. Briefly vortex the tube and then do a quick spin (less than 5000xg) to concentrate the liquid at the bottom.
5. Store the suspended plasmid at -20°C. The DNA is stable for at least one year from date of shipping when stored at -20°C.

RefSeq: [NM_201623.1](#), [NP_963917.1](#)

RefSeq Size: 1474 bp

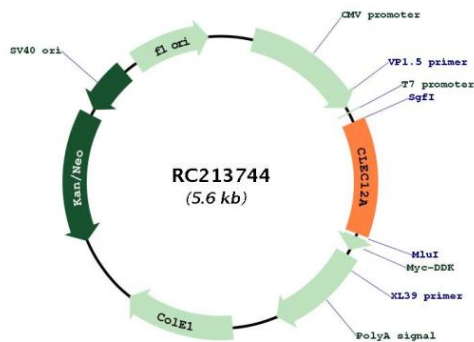
RefSeq ORF: 699 bp

Locus ID: 160364

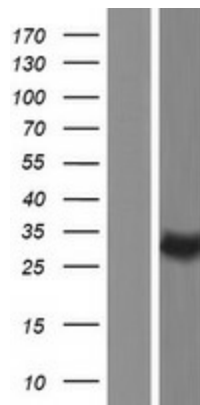
UniProt ID: [Q5QGZ9](#)
Cytogenetics: 12p13.31
Protein Families: Druggable Genome, Transmembrane
MW: 27.3 kDa

Gene Summary: This gene encodes a member of the C-type lectin/C-type lectin-like domain (CTL/CTLD) superfamily. Members of this family share a common protein fold and have diverse functions, such as cell adhesion, cell-cell signaling, glycoprotein turnover, and roles in inflammation and immune response. The protein encoded by this gene is a negative regulator of granulocyte and monocyte function. Several alternatively spliced transcript variants of this gene have been described, but the full-length nature of some of these variants has not been determined. This gene is closely linked to other CTL/CTLD superfamily members in the natural killer gene complex region on chromosome 12p13. [provided by RefSeq, May 2011]

Product images:



Circular map for RC213744



Western blot validation of overexpression lysate (Cat# [LY404485]) using anti-DDK antibody (Cat# [TA50011-100]). Left: Cell lysates from untransfected HEK293T cells; Right: Cell lysates from HEK293T cells transfected with RC213744 using transfection reagent MegaTran 2.0 (Cat# [TT210002]).