

Product datasheet for RC213742

CTRP3 (C1QTNF3) (NM_181435) Human Tagged ORF Clone

Product data:

Product Type:	Expression Plasmids
Product Name:	CTRP3 (C1QTNF3) (NM_181435) Human Tagged ORF Clone
Tag:	Myc-DDK
Symbol:	CTRP3
Synonyms:	C1ATNF3; CORCS; CORS; CORS-26; CORS26; CTRP3
Mammalian Cell Selection:	Neomycin
Vector:	pCMV6-Entry (PS100001)
E. coli Selection:	Kanamycin (25 ug/mL)
ORF Nucleotide Sequence:	>RC213742 representing NM_181435 Red=Cloning site Blue=ORF Green=Tags(s)

TTTTGTAATACGACTCACTATAGGGCGGCCGGAATTCGTCGACTGGATCCGGTACCGAGGAGATCTGCC
GCC**CGATCGCC**

ATGCTTTGGAGGCAGCTCATCTATTGGCAACTGCTGGCTTTGTTTTCTCCCTTTTGCCTGTGTCAAG
ATGAATACATGGAGGTGAGCGGAAGAATAAAAGTGGTGGCAAGAATAGTGCAAAGCCACCAGCAGAC
TGGCCGTAGCGGCTCCAGGAGGGAGAAAGTGAGAGAGCGGAGCCATCCTAAAAGTGGACTGTGGATAAT
AACACTTCTACAGACCTAAAATCCCTGAGACCAGATGAGCTACCGCACCCGAGGTAGATGACCTAGCCC
AGATCACACATTCTGGGGCCAGTCTCCACAAACCGGAGGACTACCCCCAGACTGCAGTAAGTGTGTCA
TGGAGACTACAGCTTTCGAGGCTACCAAGGCCCCCTGGGCCACCGGGCCCTCCTGGCATTCCAGGAAAC
CATGGAACAATGGCAACAATGGAGCCACTGGTCATGAAGGAGCCAAAGGTGAGAAGGGCGACAAAGGTG
ACCTGGGGCCTCGAGGGGAGCGGGGCAGCATGGCCCCAAAGGAGAGAAGGGCTACCCGGGGATTCCACC
AGAAGTTCAGATTGCATTCATGGCTTCTCTGGCAACCCACTTCAGCAATCAGAACAGTGGGATTATCTTC
AGCAGTGTGAGACCAACATTGGAACTTCTTTGATGTCATGACTGGTAGATTGGGGCCCCAGTATCAG
GTGTGATTTCTCACCTTCAGCATGATGAAGCATGAGGATGTTGAGGAAGTGTATGTGTACCTTATGCA
CAATGGCAACACAGTCTTCAGCATGTACAGCTATGAAATGAAGGGCAAATCAGATACATCCAGCAATCAT
GCTGTGCTGAAGCTAGCCAAAGGGGATGAGGTTGGCTGCGAATGGGCAATGGCGCTCCATGGGGACC
ACCAACGCTTCTCCACCTTTCAGGATTCTGCTCTTTGAAACTAAG

ACGCGTACGCGGCCGCTCGAGCAGAAACTCATCTCAGAAGAGGATCTGGCAGCAAATGATATCCTGGATT
ACAAGGATGACGACGATAAGGTTTAA



[View online »](#)

Protein Sequence: >RC213742 representing NM_181435
Red=Cloning site Green=Tags(s)

MLWRQLIYWQLLALFFLPFLCQDEYMEVSGRTNKVVARIVQSHQQTGRSGSRREKVRERSHPKTGTVDN
 NTSTDCLKSLRPDELPHPEVDDLAQITTFWQSQPTGGLPPDCSKCCHGDYSFRGYQPPGPPGIPGN
 HGNNGNNGATGHEGAKGEKGDGDLGPRGERGQHGPKEKGYPGIPPELQIAFMASLATHFSNQNSGIIF
 SSVETNIGNFVDMTGRFGAPVSGVYFFTF SMMKHEDVEEVYVYL MHNNGTVF SMYSYEMK GKSDTSSNH
 AVLKLAGDEVWLRMGNGALHGDHQRFFSTFAGFLLFETK

TRTRPLEQKLISEEDLAANDILDYKDDDDKVV

Chromatograms: https://cdn.origene.com/chromatograms/mk6506_a12.zip

Restriction Sites: SgfI-MluI

Cloning Scheme:



ACCN: NM_181435

ORF Size: 957 bp

OTI Disclaimer: The molecular sequence of this clone aligns with the gene accession number as a point of reference only. However, individual transcript sequences of the same gene can differ through naturally occurring variations (e.g. polymorphisms), each with its own valid existence. This clone is substantially in agreement with the reference, but a complete review of all prevailing variants is recommended prior to use. [More info](#)

OTI Annotation: This clone was engineered to express the complete ORF with an expression tag. Expression varies depending on the nature of the gene.

Components: The ORF clone is ion-exchange column purified and shipped in a 2D barcoded Matrix tube containing 10ug of transfection-ready, dried plasmid DNA (reconstitute with 100 ul of water).

Reconstitution Method:

1. Centrifuge at 5,000xg for 5min.
2. Carefully open the tube and add 100ul of sterile water to dissolve the DNA.
3. Close the tube and incubate for 10 minutes at room temperature.
4. Briefly vortex the tube and then do a quick spin (less than 5000xg) to concentrate the liquid at the bottom.
5. Store the suspended plasmid at -20°C. The DNA is stable for at least one year from date of shipping when stored at -20°C.

RefSeq: [NM_181435.6](#)

RefSeq Size: 3789 bp

RefSeq ORF: 960 bp

Locus ID: 114899

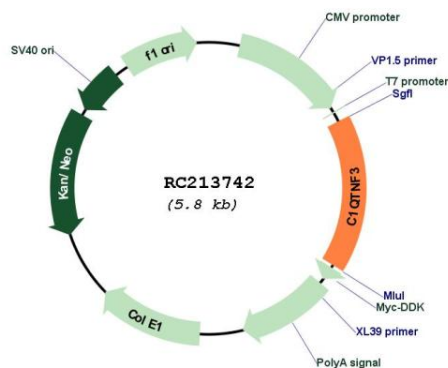
UniProt ID: [Q9BXJ4](#)

Cytogenetics: 5p13.2

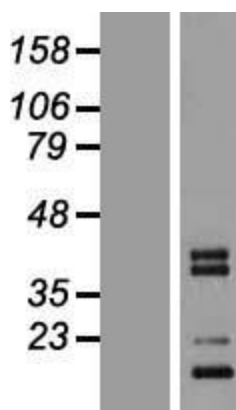
Protein Families: Secreted Protein

MW: 35 kDa

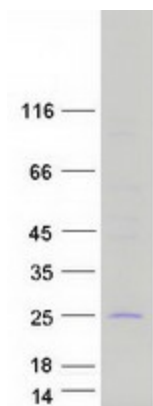
Product images:



Circular map for RC213742



Western blot validation of overexpression lysate (Cat# [LY405756]) using anti-DDK antibody (Cat# [TA50011-100]). Left: Cell lysates from untransfected HEK293T cells; Right: Cell lysates from HEK293T cells transfected with RC213742 using transfection reagent MegaTran 2.0 (Cat# [TT210002]).



Coomassie blue staining of purified C1QTNF3 protein (Cat# [TP313742]). The protein was produced from HEK293T cells transfected with C1QTNF3 cDNA clone (Cat# RC213742) using MegaTran 2.0 (Cat# [TT210002]).