

Product datasheet for **RC213739**

TCEAL4 (NM_001006935) Human Tagged ORF Clone

Product data:

Product Type:	Expression Plasmids
Product Name:	TCEAL4 (NM_001006935) Human Tagged ORF Clone
Tag:	Myc-DDK
Symbol:	TCEAL4
Synonyms:	NPD017; WEX7
Mammalian Cell Selection:	Neomycin
Vector:	pCMV6-Entry (PS100001)
E. coli Selection:	Kanamycin (25 ug/mL)
ORF Nucleotide Sequence:	>RC213739 ORF sequence Red=Cloning site Blue=ORF Green=Tags(s)

TTTTGTAATACGACTCACTATAGGGCGCCGGGAATTCGTCGACTGGATCCGGTACCGAGGAGATCTGCC
GCC**CGATCGCC**

ATGAAAAACTCTACAGTGAAAAATGAAGGAATGGCTTCAAACCAAGGAAAGATGGAAAAATGAAGAACAGC
CACAAAGACGAGAGAAAGCCAGAAGTAACCTGTACTCTGGAAGACAAGAAGTTAGAAAACGAGGGAAAGAC
AGAAAACAAGGGCAAAACAGGAGATGAGGAAATGTTAAAGGATAAAGGAAAGCCAGAGAGTGAGGGAGAG
GCAAAAAGAAGGAAAGTCAGAGAGGGAGGGAGAGTCAGAGATGGAGGGAGGATCAGAGAGAGAGGGAAAAAC
CAGAGATAGAGGGAAAGCCAGAGAGTGAAGGAGAGCCAGGGAGTAAACAAGGGCTGCAGGAAAGCGCCC
AGCTGAGGATGATGTACCCAGGAAAGCCAAAAGAAAACTAATACGGGGCTGGCTCATTACCTCAAGGAG
TATAAAGAGGCTATACATGATATGAATTCAGCAATGAGGACATGATAAGAGAATTTGACAATATGGCTA
AGGTGCAGGATGAGAAGAGAAAAAGCAAACAGAAATGGGGGCGTTTTTGTGGATGCAAAGAAATTTACA
GGACCCCTTCTACCCTAGAGGTCCAAGGGAATTCAGGGGTGGCTGCAGGGCCCCACGAAGGGACATTGAA
GACATTCCTTATGTG

ACGCGTACGCGGCGCTCGAGCAGAAACTCATCTCAGAAGAGGATCTGGCAGCAAATGATATCCTGGATT
ACAAGGATGACGACGATAAGGTTTAA



[View online »](#)

Reconstitution Method:

1. Centrifuge at 5,000xg for 5min.
2. Carefully open the tube and add 100ul of sterile water to dissolve the DNA.
3. Close the tube and incubate for 10 minutes at room temperature.
4. Briefly vortex the tube and then do a quick spin (less than 5000xg) to concentrate the liquid at the bottom.
5. Store the suspended plasmid at -20°C. The DNA is stable for at least one year from date of shipping when stored at -20°C.

RefSeq: [NM_001006935.3](#)

RefSeq Size: 1294 bp

RefSeq ORF: 648 bp

Locus ID: 79921

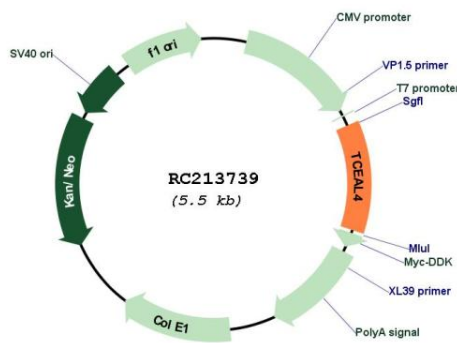
UniProt ID: [Q96EI5](#)

Cytogenetics: Xq22.2

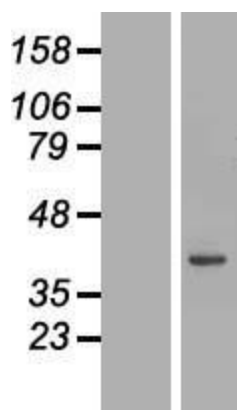
MW: 24.6 kDa

Gene Summary: This gene encodes a member of the transcription elongation factor A (SII)-like (TCEAL) gene family. This family is comprised of nuclear phosphoproteins that modulate transcription in a promoter context-dependent manner. Multiple family members are located on the X chromosome. Alternatively splicing results in multiple transcript variants. There is a pseudogene for this gene on chromosome 13. [provided by RefSeq, Apr 2015]

Product images:



Circular map for RC213739



Western blot validation of overexpression lysate (Cat# [LY411028]) using anti-DDK antibody (Cat# [TA50011-100]). Left: Cell lysates from untransfected HEK293T cells; Right: Cell lysates from HEK293T cells transfected with [RC214906] using transfection reagent MegaTran 2.0 (Cat# [TT210002]).