

Product datasheet for RC213730

ROBO4 (NM_019055) Human Tagged ORF Clone

Product data:

Product Type:	Expression Plasmids
Product Name:	ROBO4 (NM_019055) Human Tagged ORF Clone
Tag:	Myc-DDK
Symbol:	ROBO4
Synonyms:	AOVD3; ECSM4; MRB
Mammalian Cell Selection:	Neomycin
Vector:	pCMV6-Entry (PS100001)
E. coli Selection:	Kanamycin (25 ug/mL)
ORF Nucleotide Sequence:	>RC213730 representing NM_019055 Red=Cloning site Blue=ORF Green=Tags(s)

TTTTGTAATACGACTCACTATAGGGCGCCGGGAATTCGTCGACTGGATCCGGTACCGAGGAGATCTGCC
GCC**CGATCGCC**

ATGGGCTCTGGAGGAGACAGCCTCCTGGGGGCGAGGGTTCCCTGCCTCTGCTGCTCCTGCTCATCATGG
GAGGCATGGCTCAGGACTCCCCGCCAGATCCTAGTCCACCCAGGACCAGCTGTTCCAGGGCCCTGG
CCCTGCCAGGATGAGCTGCCAAGCCTCAGGCCAGCCACCTCCACCATCCGCTGGTTGCTGAATGGGCAG
CCCCTGAGCATGGTGCCCCAGACCCACACCACCTCCTGCCTGATGGGACCTTCTGCTGCTACAGCCCC
CTGCCCGGGACATGCCACGATGGCCAGGCCCTGTCCACAGACCTGGGTGTCTACACATGTGAGGCCAG
CAACCGCTTGGCACGGCAGTCAGCAGAGGCGCTCGGCTGTCTGTGGCTGTCTCCGGGAGGATTCCAG
ATCCAGCCTCGGGACATGGTGGCTGTGGTGGGTGAGCAGTTTACTCTGGAATGTGGGCGCCCTGGGGCC
ACCCAGAGCCACAGTCTCATGGTGAAAGATGGGAAACCCCTGGCCCTCCAGCCCGAAGGCACACAGT
GTCCGGGGGGTCCCTGCTGATGGCAAGAGCAGAGAAGAGTGACGAAGGGACCTACATGTGTGTGGCCACC
AACAGCGCAGGACATAGGGAGAGCCGCGCAGCCGGGTTTCCATCCAGGAGCCCCAGGACTACACGGAGC
CTGTGGAGCTTCTGGCTGTGCGAATTCAGCTGGAAGTGTGACTGTGAACCCGGATCCTGCAGAGGG
CCCCAAGCCTAGACCGCGGTGTGGCTCAGCTGGAAGTCACTGGCCCTGCTGCGCCTGCCAATCTTAC
ACGGCCTTGTTCAGGACCCAGACTGCCCGGGAGGCCAGGAGCTCCGTGGGCAGAGGAGCTGTGGCCG
GCTGGCAGAGCGCAGAGCTTGGAGGCTCCACTGGGGCCAAGACTACGAGTTCAAAGTGAGACATCCTC
TGCCCGGGCTCGAGGCCCTGACAGCAACGTGCTGCTCCTGAGGCTGCCGAAAAAGTGCCAGTGGCCCA
CCTCAGGAAGTACTCTAAAGCCTGGCAATGGCACTGTCTTTGTGAGCTGGGTCCCACCACCTGTGAAA
ACCACAATGGCATCATCCGTGGCTACCAGGTCTGGAGCCTGGGCAACACATCACTGCCACCAGCCAACTG
GACTGTAGTTGGTGAAGCAGCCAGCTGGAATCGCCACCCATATGCCAGGCTCTACTGCGTGCAAGTG
GCTGCAGTCACTGGTGTGGAGCTGGGGAGCCAGTAGACCTGTCTGCCTCCTTTAGAGCAGGCCATGG
AGCGAGCCACCAAGAACCAGTGAAGTGGTCCCTGGACCCTGGAGCAGCTGAGGGCTACCTTGAAGCG
GCCTGAGGTCATTGCCACCTGCGGTGTTGCACTCTGGCTGCTGCTCTGGGCACCGCGTGTATCCAC



[View online >](#)

CGCCGGCGCCGAGCTAGGGTGCACCTGGGCCAGGTCTGTACAGATATACCAGTGAGGATGCCATCCTAA
AACACAGGATGGATCACAGTGACTCCCAGTGGTTGGCAGACACTTGGCGTTCCACCTCTGGCTCTCGGGA
CCTGAGCAGCAGCAGCAGCCTCAGCAGTCGGCTGGGGCGGATGCCCGGGACCCACTAGACTGTCGTCGC
TCCTTGCTCTCCTGGGACTCCCGAAGCCCCGGCGTGCCCTGCTTCCAGACACCAGCACTTTTATGGCT
CCCTCATCGCTGAGCTGCCCTCCAGTACCCAGCCAGGCCAAGTCCCAGGTCCCAGCTGTCAGGCGCCT
CCCACCCAGCTGGCCAGCTCTCCAGCCCTGTTCCAGCTCAGACAGCCTCTGCAGCCGCAGGGGACTC
TCTTCTCCCCGTTGTCTCTGGCCCTGCAGAGGCTTGAAGGCCAAAAAGAAGCAGGAGCTGCAGCATG
CCAACAGTTCCCCACTGCTCCGGGGCAGCCACTCCTTGGAGCTCCGGGCCTGTGAGTTAGGAAATAGAGG
TTCCAAGAACCTTTCCAAAGCCAGGAGCTGTGCCCAAGCTCTGGTTGCCTGGCGGGCCCTGGGACCG
AAACTCCTCAGCTCCTCAATGAGCTGGTTACTCGTCATCTCCCTCCAGCACCCCTCTTTCCTCATGAAA
CTCCCCAACTCAGAGTCAACAGACCCAGCCTCCGGTGGCACCACAGGCTCCCTCCTCCATCCTGCTGCC
AGCAGCCCCATCCCATCCTTAGCCCTGCAGTCCCCCTAGCCCCAGGCCTCTTCCCTCTTGCCCC
AGCCAGCTTCCAGTCGCTGTCCAGCTCCTACTGTCATCCCTGGGGAGGATCAAGACAGCGTGTGA
CCCCTGAGGAGGTAGCCCTGTGCTTGAAGTCACTGAGGGTGGAGAGACTCCAGGAACAGCGTCTCTCC
CATGCCAAGGGCTCCTTACCCCCACCACCTATGGGTACATCAGCGTCCAACAGCCTCAGAGTTCAGG
GACATGGGCAGGACTGGAGGAGGGTGGGGCCAAAGGGGGAGTCTTGCTGTGCCACCTCGGCCCTGCC
TACCCCCACCCAGCGAGGGCTCCTTAGCCAATGGTTGGGGCTCAGCCTCTGAGGACAATGCCGCCAG
CGCCAGAGCCAGCCTTGTGAGCTCCTCCGATGGCTCCTTCTCGTGTGCTCACTTTGCCCGGGCCCTG
GCAGTGGCTGTGGATAGCTTTGGTTTCGGTCTAGAGCCAGGGAGGCAGACTGCGTCTTCATAGATGCC
CATCACCTCCCTCCCACGGGATGAGATCTTCTGACCCCCAACCTCTCCCTGCCCTGTGGGAGTGGAG
GCCAGACTGGTTGAAGACATGGAGTCAAGCCACCCAGCGGCTGGGAAGGGGGATGCCTCCCTGGCCC
CCTGACTCTCAGATCTTCCCAGAGAAGTCACTCCACTGTCGTATGCCAAGGCTGGTCTTCTCCTG
TAGATTACTCC

ACGCGTACGCGGCCGCTCGAGCAGAACTCATCTCAGAAGAGGATCTGGCAGCAATGATATCCTGGATT
ACAAGGATGACGACGATAAGGTTTAA

Protein Sequence:

>RC213730 representing NM_019055
Red=Cloning site Green=Tags(s)

MGSGGDSLLGGRGSLPLLLLLIMGMAQDSPPQILVHPQDQLFQGPARGMSCQASGQPPPTIRWLLNGQ
PLSMVPPDPHLLLPDGTLLLLQPPARGHAHDGQALSTDLGVYTCEASNRLGTAVSRGARLSVAVLREDFQ
IQPRDMVAVVGEQFTLECGPPWGHPEPTVSWWKDGKPLALQPGRHTVSGGSLLMARAESDEGTVMCVAT
NSAGHRESRAARVSIQEPQDYTEPVELLAVRIQLENTVLLNPDPAEGPKRPAVWLSWKVSGPAAPAQSY
TALFRTQTAPGGQGAPWAEELLAGWQSAELGGLHWGQDYEFKVRPSSGRARGPDSNVLLRLPEKVPSAP
PQEVTLKPGNGTVFVSWVPPAENHNGIIRGYQVWSLGNLTPPANWTVVGEQTQLEIATHMPGSYCVQV
AAVTGAGAGEPSRPVCLLLEQAMERATQEPSEHGPWTLEQLRATLKRPEVIATCGVALWLLLLGTAVCIH
RRRRRARVHLGPGLYRYTSEDAILKHRMDHSDSQWLADTWSTSGSRDLSSSSSLSSRLGADARDPLDCRR
SLLSWDSRSPGVPLLPDTSTFYGSLIAELPSSTPARPSPQVPAVRRLLPQLAQLSSPCSSSDSLCSRRGL
SSPRLSLAPAEAWKAKKKQELQHANSPLLRGSHSLELRACELGNRGSKNLSQSPGAVPQALVAVRALGP
KLLSSSNELVTRHLPPAPLFPHETPPTQSQTQPPVAPQAPSSILLPAAPIPILSPCSPSPQASSLSPG
SPASSRLSSSSSLSGEDQDSVLTPEEVALCLELSEGEETPRNSVSPMPRAPSPPTTYGYISVPTASEFT
DMGRTGGGVGPKGGVLLCPPRPCLTPTPSEGLANGWGSASEDNAASARASLVSSSDGSFLADAHFARAL
AVAVDSFGFGLPREADCVFIDASSPPSPRDEIFLTPNLSLPLWEWRPDWLEDMEVSHTQRLGRGMPPWP
PDSQISSQRSQLHCRMPKAGASPDYS

TRTRPLEQKLISEEDLAANDILDYKDDDDKV

Chromatograms:

https://cdn.origene.com/chromatograms/mk6255_e03.zip

Restriction Sites:

SgfI-MluI

Cloning Scheme:


ACCN: NM_019055

ORF Size: 3021 bp

OTI Disclaimer: The molecular sequence of this clone aligns with the gene accession number as a point of reference only. However, individual transcript sequences of the same gene can differ through naturally occurring variations (e.g. polymorphisms), each with its own valid existence. This clone is substantially in agreement with the reference, but a complete review of all prevailing variants is recommended prior to use. [More info](#)

OTI Annotation: This clone was engineered to express the complete ORF with an expression tag. Expression varies depending on the nature of the gene.

Components: The ORF clone is ion-exchange column purified and shipped in a 2D barcoded Matrix tube containing 10ug of transfection-ready, dried plasmid DNA (reconstitute with 100 ul of water).

Reconstitution Method:

1. Centrifuge at 5,000xg for 5min.
2. Carefully open the tube and add 100ul of sterile water to dissolve the DNA.
3. Close the tube and incubate for 10 minutes at room temperature.
4. Briefly vortex the tube and then do a quick spin (less than 5000xg) to concentrate the liquid at the bottom.
5. Store the suspended plasmid at -20°C. The DNA is stable for at least one year from date of shipping when stored at -20°C.

RefSeq: [NM_019055.6](#)

RefSeq Size: 3872 bp

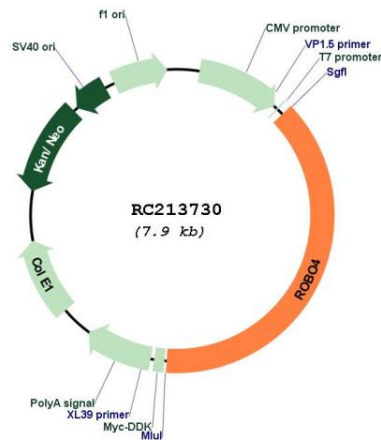
RefSeq ORF: 3024 bp

Locus ID: 54538

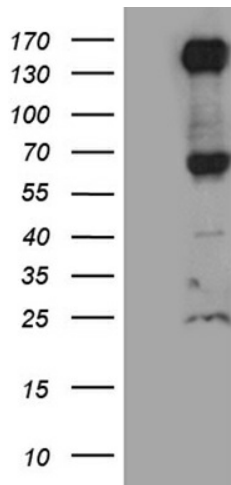
UniProt ID: [Q8WZ75](#)
Cytogenetics: 11q24.2
Domains: ig, IGc2, IG, FN3
Protein Families: Druggable Genome
MW: 107.3 kDa

Gene Summary: Receptor for Slit proteins, at least for SLIT2, and seems to be involved in angiogenesis and vascular patterning. May mediate the inhibition of primary endothelial cell migration by Slit proteins (By similarity).[UniProtKB/Swiss-Prot Function]

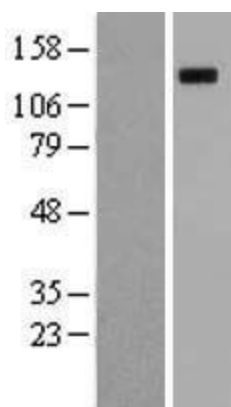
Product images:



Circular map for RC213730



HEK293T cells were transfected with the pCMV6-ENTRY control (Cat# [PS100001], Left lane) or pCMV6-ENTRY ROBO4 (Cat# RC213730, Right lane) cDNA for 48 hrs and lysed. Equivalent amounts of cell lysates (5 ug per lane) were separated by SDS-PAGE and immunoblotted with anti-ROBO4 (Cat# [TA81 1323])(1:2000). Positive lysates [LY412794] (100ug) and [LC412794] (20ug) can be purchased separately from OriGene.



Western blot validation of overexpression lysate (Cat# [LY412794]) using anti-DDK antibody (Cat# [TA50011-100]). Left: Cell lysates from untransfected HEK293T cells; Right: Cell lysates from HEK293T cells transfected with RC213730 using transfection reagent MegaTran 2.0 (Cat# [TT210002]).