

Product datasheet for RC213712

BCS1L (NM_001079866) Human Tagged ORF Clone

Product data:

Product Type:	Expression Plasmids
Product Name:	BCS1L (NM_001079866) Human Tagged ORF Clone
Tag:	Myc-DDK
Symbol:	BCS1L
Synonyms:	BCS; BCS1; BJS; FLNMS; GRACILE; h-BCS; h-BCS1; Hs.6719; MC3DN1; PTD
Mammalian Cell Selection:	Neomycin
Vector:	pCMV6-Entry (PS100001)
E. coli Selection:	Kanamycin (25 ug/mL)
ORF Nucleotide Sequence:	>RC213712 ORF sequence Red=Cloning site Blue=ORF Green=Tags(s)

TTTTGTAATACGACTCACTATAGGGCGGCCGGAATTCGTCGACTGGATCCGGTACCGAGGAGATCTGCC
GCC**CGATCGCC**

ATGCCACTTTCAGACTTTATTCTGGCTCTGAAGGACAATCCCTACTTTGGGGCTGGATTTGGGCTGGTGG
GTGTGGGCACAGCCCTGGCCCTGGCCCGGAAGGGTGTCCAACCTGGGCTGGTGGCATTCCGGCGCCATTA
CATGATCACACTGGAAGTCCCTGCTCGAGACAGGAGCTATGCCTGGTTGCTTAGCTGGCTACCCGCCAC
AGTACCCGTAAGTACTCAGCACCTCAGTGTGAGACTTCGTACCTTCAGCATGAGAGTGGCCGATTTCCACTA
AGTTTGAATTTGTCCCGCCAGCCCTGGAAACCATTTTATCTGGTATCGGGGAAATGGATTCGGGTAGAACG
AAGTCGAGAGATGCAGATGATAGACTTGCAGACGGGACTCCTTGGGAATCTGTACCTTACCGCCCTG
GGCACTGACCGAAAGTTTTCTTCAACATCCTGGAGGAAGCTCGAGAGCTAGCCTTGCAGCAGGAGGAAG
GGAAGACCGTGATGTACACAGCTGTGGGCTCTGAATGGCGTCCCTTTGGCTATCCACGCCCGCGGAC
ACTGAATCTGTGGTTCTACAACAGGGTCTGGCTGACCGAATTGTGAGAGACGTCCAGGAATTCATCGAT
AACCCCAAGTGGTACACTGACAGAGGCATTCTTACAGACGTGGCTACCTGCTTTATGGGCCCTGGTT
GCGGAAAGAGCAGTTTTATCACAGCCCTGGCTGGGAACTGGAGCACAGCATCTGCCTGCTGAGCCTCAC
GGACTCCAGCCTCTGATGACCGACTCAACCACCTGCTGAGCGTGGCCCGCAGCAGAGCCTGGTACTC
CTGGAGGATGTGGATGCTGCTTTTCTCAGTCGAGACTTGGCTGTGAGAAACCCAGTAAAGTACCAAGGCC
TAGGTCGCCTCACCTTCACTGGACTGCTCAATGCCTTGGATGGTGTGGCTTCCACCGAGGCCGCATCGT
GTTTCATGACCACCAACCAGTTGACAGGCTGGACCCTGCCTGATACGCCCGGGCGAGTGGACCTGAAG
GAGTACGTGGGCTACTGCTCACACTGGCAGCTGACCCAGATGTTCCAGAGTTCTATCCAGGGCAGGCAC
CTTCTTAGCTGAGAATTTGCAGAATGTCCTTCGAGCTACAAACCAGATCAGTCTGCCAGGTGCA
GGGCTACTTCATGCTGTATAAAATGACCCTGTAGGGCAATTCACAATGCTGAGTCTCTGAGGAGG

ACGCGTACGCGGCCGCTCGAGCAGAAACTCATCTCAGAAGAGGATCTGGCAGCAAATGATATCTGGATT
ACAAGGATGACGACGATAAGGTTTAA



[View online »](#)

Protein Sequence: >RC213712 protein sequence
Red=Cloning site Green=Tags(s)

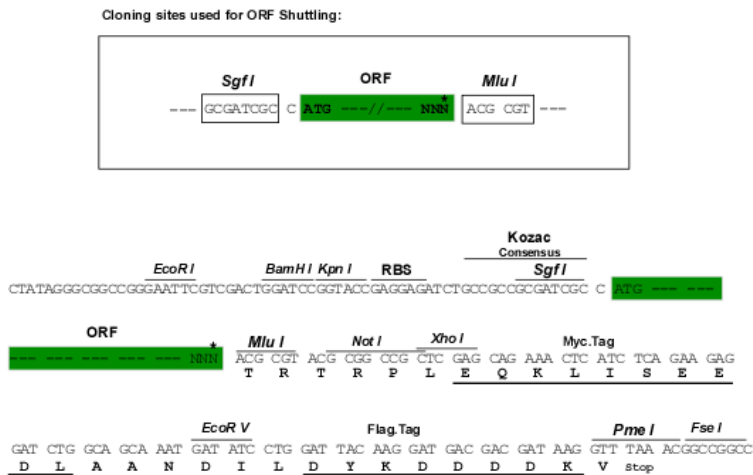
MPLSDFILALKDNPYFGAGFGLVGVGTALALARKGVQLGLVAFRRHYMITLEVPARDRSYAWLLSWLTRH
 STRTQHL SVETSYLQHESGRISTKFEFVPSGNHFIWYRGKWIRVERSREMOMIDLQTGTPWESVTF TAL
 GTDRKVVFNILEEARELALQEEGKTVMYTAVGSEWRPFYPRRRRPLNSVVLQQGLADRIVRDVQEFID
 NPKWYTD RGI PYRRGYLLY GPPGCGKSSFITALAGELEHSICLLSLT DSSL SDDR LNHL LSVAPQQSLVL
 LEDVDA AFLSRDLAVENPVKYQGLGRLTF SGLLNALDGVASTE ARIVFMTTNHVDRLDPALIRPGRVDLK
 EYVGYCSHWQLTQMFQRFYPGQAPSLAENFAEHLRATNQI SPAQVQGYFMLYKNDPVGAIHNAESLRR

TRTRPLEQKLISEEDLAANDILDYKDDDDKVV

Chromatograms: https://cdn.origene.com/chromatograms/mk6409_e08.zip

Restriction Sites: SgfI-MluI

Cloning Scheme:



* The last codon before the Stop codon of the ORF

ACCN: NM_001079866

ORF Size: 1257 bp

OTI Disclaimer: The molecular sequence of this clone aligns with the gene accession number as a point of reference only. However, individual transcript sequences of the same gene can differ through naturally occurring variations (e.g. polymorphisms), each with its own valid existence. This clone is substantially in agreement with the reference, but a complete review of all prevailing variants is recommended prior to use. [More info](#)

OTI Annotation: This clone was engineered to express the complete ORF with an expression tag. Expression varies depending on the nature of the gene.

Components: The ORF clone is ion-exchange column purified and shipped in a 2D barcoded Matrix tube containing 10ug of transfection-ready, dried plasmid DNA (reconstitute with 100 ul of water).

Reconstitution Method:

1. Centrifuge at 5,000xg for 5min.
2. Carefully open the tube and add 100ul of sterile water to dissolve the DNA.
3. Close the tube and incubate for 10 minutes at room temperature.
4. Briefly vortex the tube and then do a quick spin (less than 5000xg) to concentrate the liquid at the bottom.
5. Store the suspended plasmid at -20°C. The DNA is stable for at least one year from date of shipping when stored at -20°C.

RefSeq: [NM_001079866.2](#)

RefSeq Size: 1454 bp

RefSeq ORF: 1260 bp

Locus ID: 617

UniProt ID: [Q9Y276](#)

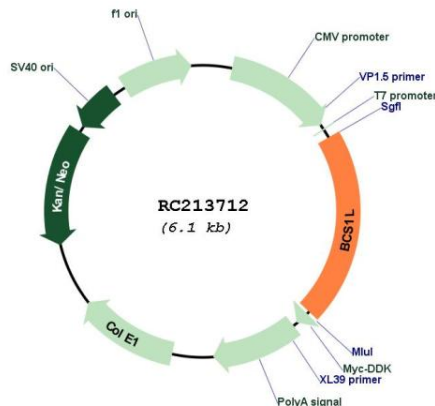
Cytogenetics: 2q35

Protein Families: Druggable Genome

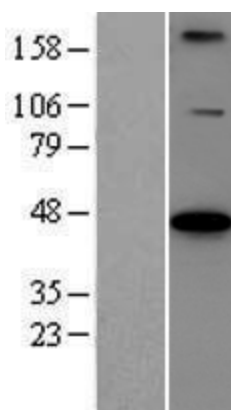
MW: 47.5 kDa

Gene Summary: This gene encodes a homolog of the *S. cerevisiae* *bcs1* protein which is involved in the assembly of complex III of the mitochondrial respiratory chain. The encoded protein does not contain a mitochondrial targeting sequence but experimental studies confirm that it is imported into mitochondria. Mutations in this gene are associated with mitochondrial complex III deficiency and the GRACILE syndrome. Several alternatively spliced transcripts encoding two different isoforms have been described. [provided by RefSeq, Jan 2016]

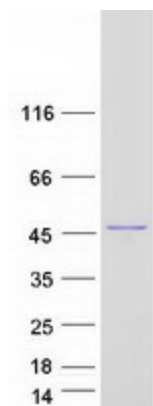
Product images:



Circular map for RC213712



Western blot validation of overexpression lysate (Cat# [LY421566]) using anti-DDK antibody (Cat# [TA50011-100]). Left: Cell lysates from untransfected HEK293T cells; Right: Cell lysates from HEK293T cells transfected with RC213712 using transfection reagent MegaTran 2.0 (Cat# [TT210002]).



Coomassie blue staining of purified BCS1L protein (Cat# [TP313712]). The protein was produced from HEK293T cells transfected with BCS1L cDNA clone (Cat# RC213712) using MegaTran 2.0 (Cat# [TT210002]).