

Product datasheet for RC213703

PCDH1 (NM_032420) Human Tagged ORF Clone

Product data:

Product Type:	Expression Plasmids
Product Name:	PCDH1 (NM_032420) Human Tagged ORF Clone
Tag:	Myc-DDK
Symbol:	PCDH1
Synonyms:	PC42; PCDH42
Mammalian Cell Selection:	Neomycin
Vector:	pCMV6-Entry (PS100001)
E. coli Selection:	Kanamycin (25 ug/mL)
ORF Nucleotide Sequence:	>RC213703 representing NM_032420 Red=Cloning site Blue=ORF Green=Tags(s)

TTTTGTAATACGACTCACTATAGGGCGGCCGGGAATTCGTCGACTGGATCCGGTACCGAGGAGATCTGCC
GCC**CGATCGCC**

ATGGACAGCGGGCGGGCGGCCGGCGCTGCCCGGAGGCGGCCCTCCTGATTCTGGGGCTCCCAGGATGG
AGCACCTGAGGCACAGCCAGGCCCTGGGGGCAACGGCTACTGCTGCCCTCCATGCTGCTAGCACTGCT
GCTCCTGCTGGCTCCATCCCCAGGCCACGCCACTCGGGTAGTGTACAAGGTGCCGGAGAACAGCCACCC
AACACCCTCATTGGGAGCCTCGCAGCCGACTATGGTTTTCCAGATGTGGGGCACCTGTACAAGCTAGAGG
TGGGTGCCCGTACCTTCGCGTGGATGGCAAGACAGGTGACATTTTACCACCGAGACCTCCATCGACCG
TGAGGGGCTCCGTGAATGCCAGAACCAGCTCCCTGGTGATCCCTGCATCCTGGAGTTGAGGTATCTATC
ACAGACCTCGTGCAAGTGGCAGCCCCGGCTGTAGAGGGCCAGATAGAAGTACAAGACATCAATGACA
ACACACCAACTTCGCCTCACCAGTCACTACTCTGGCCATCCCTGAGAACACCAACATCGGCTCACTCTT
CCCCATCCCGCTGGCTTCAGACCGTGATGCTGGTCCCAACGGTGTGGCATCCTATGAGCTGCAGGCTGGG
CCTGAGGCCCAGGAGCTATTTGGGCTGCAGGTGGCAGAGGACCAGGAGGAGAAGCAACCACAGCTCATTG
TGATGGCAACCTGGACCGTGAGCGCTGGGACTCCTATGACCTCACCATCAAGGTGCAGGATGGCGGCAG
CCCCCACGCGCCAGCAGTGCCTGTGCGTGTACCCTGCTTGACACCAATGACAACGCCCCCAAGTTT
GAGCGGCCCTCCTATGAGGCCGAATCTGAGAATAGCCCCATAGGCCACTCGGTCATCCAGGTGAAGG
CCAATGACTCAGACCAAGGTGCCAATGCAGAAATCGAATACACATTCCACCAGGCCGCCGAAGTTGTGAG
GGTCTTCTTCGACTGGACAGGAACACTGGACTTATCACTGTTCAGGGCCCGGTGGACCGTGAGGACCTA
AGCACCTGCGCTTCTCAGTGTGCTAAGGACCGAGGCACCAACCCCAAGAGTGCCCGTGGCCAGGTGG
TTGTGACCGTGAAGGACATGAATGACAATGCCCCACCATTTGAGATCCGGGGCATAGGGCTAGTGACTCA
TCAAGATGGGATGGTAACATCTCAGAGGATGTGGCAGAGGAGACAGCTGTGGCCCTGGTGCAGGTGTCT
GACCGAGATGAGGGAGAGAATGCAGCTGTACCTGTGTGGTGGCAGGTGATGTGCCCTTCCAGCTGCGCC
AGGCCAGTGAGACAGGCAGTGACAGCAAGAAGAAGTATTTCTGCAGACTACCACCCCGCTAGACTACGA
GAAGGTCAAAGACTACACATTGAGATTGTGGCTGTGGACTCTGGCAACCCCCACTCTCCAGCACTAAC



[View online »](#)

TCCCTCAAGGTGCAGGTGGTGGACGTCAATGACAACGCACCTGTCTTCACTCAGAGTGCTACTGAGGTCC
CCTTCCCGGAAAACAACAAGCCTGGTGAAGTGATTGCTGAGATCACTGCCAGTGATGCTGACTCTGGCTC
TAATGCTGAGCTGGTTTACTCTCTGGAGCCTGAGCCGGCTGCTAAGGGCCTTTCACCATCTCACCCGAG
ACTGGAGAGATCCAGGTGAAGACATCTCTGGATCGGGAACAGCGGGAGAGCTATGAGTTGAAGGTGGTGG
CAGCTGACCGGGCAGTCTAGCCTCCAGGGCACAGCCACTGTCTTGTCAATGTGCTGGACTGCAATGA
CAATGACCCCAAATTTATGCTGAGTGGCTACAATTCTCAGTGATGGAGAATGCCAGCCTCAGTGGAGCAGG
GTGGGCATGGTGACTGTATTGATGGAGACAAGGGGGAGAATGCCAGGTGCAGCTCAGTGGAGCAGG
ACAACGGTGACTTTGTTATCCAGAATGGCACAGGCACCATCCTATCCAGCCTGAGCTTTGATCGAGAGCA
ACAAAGCACCTACACCTTCCAGCTGAAGGCAGTGGATGGTGGCGTCCCACCTCGCTCAGTTACGTTGGT
GTCACCATCAATGTGCTGGACGAGAATGACAACGCACCCTATATCACTGCCCTTCTAACACCTCTCACA
AGCTGCTGACCCCCAGACACGTCTTGGTGGAGCAGGTGAGCCAGGTGGCAGCCGAGGACTTTGACTCTGG
TGTCAATGCTGAGCTGATCTACAGCATTGCAGGTGGCAACCCCTTATGGACTCTTCCAGATTGGGTACAT
TCAGGTGCCATCACCTGGAGAAGGAGATTGAGCGGCCACCATGGGCTACACCCGCTGGTGGTGAAGG
TCAGTGACCGCGCAAGCCCCACGCTATGGCACAGCCTTGGTCCATCTTATGTCAATGAGACTCTGGC
CAACCGCACGCTGCTGGAGACCCTCTGGGCCACAGCCTGGACAGCCGCTGGATATTGACATTGCTGGG
GATCCAGAATATGAGCGCTCCAAGCAGCGTGGCAACATCTCTTTGGTGTGGTGGCTGGTGTGGTGGCCG
TGGCCTTGCTCATCGCCCTGGCGTTCTTGTGCGCTACTGCAGACAGCGGGAGGCCAAAAGTGGTTACCA
GGCTGGTAAGAAGGAGACCAAGGACCTGTATGCCCCAAAGCCAGTGGCAAGGCCTCAAGGGAAAACAAA
AGCAAAGGCAAGAAGAGCAAGTCCCAAAGCCCGTGAAGCCAGTGGAGGACGAGGATGAGGCCGGCTGC
AGAAGTCCCTCAAGTTCAACCTGATGAGCGATGCCCTGGGGACAGTCCCCGCATCCACCTGCCCTCAA
CTACCCACCAGGCAGCCCTGACCTGGGCCGCCACTATCGCTCTAACTCCCCACTGCCTTCCATCCAGCTG
CAGCCCCAGTCAACCTCAGCCTCCAAGAAGCACCAGGTGGTACAGGACCTGCCACCTGCAACACATTTCG
TGGGCACCGGGGACACCACGTCACGGGCTCTGAGCAGTACTCCGACTACAGTACCGCACCAACCCCCC
CAAATACCCAGCAAGCAGTTACCTCACCGCCGGTACCTTCTCGGCCACCAGCCAGGCCAGGCCAGGACTG
CAGGACCCATCCCAGCACAGTACTATGACAGTGGCCTGGAGGAGTCTGAGACGCCGTCAGCAAGTCAT
CCTCAGGGCCTCGACTCGGTCCCCTGGCCCTGCCTGAGGATCACTATGAGCGCACCAACCCCTGATGGCAG
CATAGGAGAGATGGAGCACCCCGAGAATGACCTTCGCCCTTTCCTGATGTGCGCATGACAGGCACATGT
ACCCGGGAGTGCAAGTGGTTGGCCACTCTGACACATGCTGGATGCCTGGCCAGTCACTCCCAGCCGCC
GGACCAAGAGCAGCGCCCTCAAACCTCCACCTTCGTGCCTTACCAGGACCGAGGAGGGCAGGAGCCTGC
GGGCGCCGGCAGCCCCAGCCCCGGAAGACCGGAACACCAAAACGGCCCCCGTGCCTCTGCCCCTCC
TACAGTGCCTTCTCCACAGTAGCCATGATTCTGCAAGGACTCGGCCACCTTGGAGGAAATCCCCCTGA
CCCAGACCTCGGACTTCCCACCCGAGCCACACCGGCATCTGCCAGACGCCAAGCGCGAGATCTACCT
G

ACGCGTACGCGGCCGCTCGAGCAGAACTCATCTCAGAAGAGGATCTGGCAGCAAATGATATCCTGGATT
ACAAGGATGACGACGATAAGGTTAA

Protein Sequence: >RC213703 representing NM_032420
 Red=Cloning site Green=Tags(s)

MDSGAGGRRRCPEAALLILGPPRMEHLRHSPGGGQRLLLPSMLLALLLLLAPSPGHATR VVYKVPPEEQPP
 NTLIGSLAADYGFDPVGHLYKLEVGAPYL RVDGKTGDIFTTETSIDREGLRECQNQLPGDPCILEFEVSI
 TDLVQNGSPRLLEGQIEVQDINDNTPNFASPVITLAIPENTNIGSLFPIPLASDRDAGPNGVASYELQAG
 PEAQELFGLQVAEDQEELQVQLIVMGNLDRERWDSYDLTIKVDGGSPPRASSALLRVTVLDTNDNAPKF
 ERPSYEAELSENSPIGHSVIQVKANDSDQGANAEIEYTFHQAPEVVRLLRLDRNTGLITVQGPVDREDL
 STLRFSVLAKDRGTNPKSARAQVVVTVKMDNDNAPTIEIRGIGLVTHQDGMANISEDVAEETAVALVQVS
 DRDEGENAAVTCV VAGDVPFQLRQASETGSDSKKYFLQTTTPLDYEKVKDYTIEIVAVDSGNPPLSSTN
 SLKVQVVDVNDNAPVFTQSVTEVAF PENNKPGEVIAEITASDADSGSNAELVYSLEPEPAAKGLFTISPE
 TGEIQVKTSLDREQRESYELKVVAADRGPSLQGTATVLVNLDNDNDPKFMLS GYNFVSMENMPALSP
 VGMVTVIDGDKGENAQVQLSVEQDNGDFVIQNGTGTILSSL SFDREQQSTYTFQLKAVDGGVPPRSAYVG
 VTINVLDENDNAPYITAPSNTSHKLLTPQTRLGETVSQVAEDFDSGVNAELIYSIAGGNPYGLFQIGSH
 SGAITLEKEIERRHHGLHRLVVKVSDRGKPPRYGTALVHLYVNETLANRTLLETLLGHSLDTPLDIDIAG
 DPEYERSKQKRNILFGVVAGVVAALLIALAVLVRYCRQREAKSGYQAGKKTLDLYAPKPSGKASKGNK
 SKGKSKSPKPKVPEDEDEAGLQKSLKFNLMSDAPGDSPRIHLPLNYPGSPDLGRHYRSNSPLPSIQL
 QPQSPSASKKHQVVDLPPANTFVGTGDTTSTGSEQSYSDYSYRTPPKYPSKQLPHRRVTF SATSQAQEL
 QDPSQHSYYDSGLEESETPSSKSSSGPRLGPLALPEDHYERTTPDGSIGEMHPENDLRPLPDVAMTGTC
 TRECSEFGHSDTCWMPGQSSPSRRTKSSALKLSTFVVPYQDRGGQEPAGAGSPSPPEDRNTKAPVRL LPS
 YSAFSSHSDSCKDSATLEEIPLTQTSDFPPAATPASAQTAKREIYL

TRTRPLEQKLISEEDLAANDILDYKDDDDKV

Chromatograms: https://cdn.origene.com/chromatograms/mk6220_h01.zip

Restriction Sites: SgfI-MluI

Cloning Scheme:

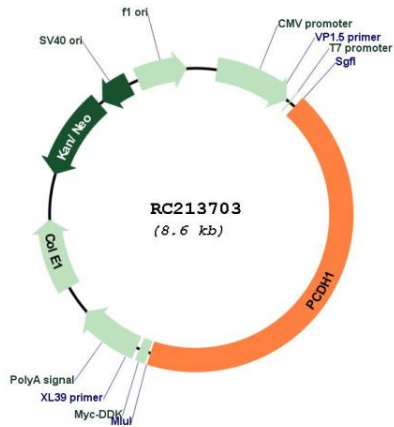


ACCN: NM_032420

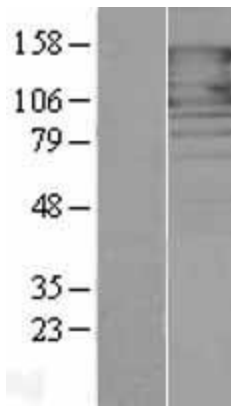
ORF Size: 3711 bp

OTI Disclaimer:	The molecular sequence of this clone aligns with the gene accession number as a point of reference only. However, individual transcript sequences of the same gene can differ through naturally occurring variations (e.g. polymorphisms), each with its own valid existence. This clone is substantially in agreement with the reference, but a complete review of all prevailing variants is recommended prior to use. More info
OTI Annotation:	This clone was engineered to express the complete ORF with an expression tag. Expression varies depending on the nature of the gene.
Components:	The ORF clone is ion-exchange column purified and shipped in a 2D barcoded Matrix tube containing 10ug of transfection-ready, dried plasmid DNA (reconstitute with 100 ul of water).
Reconstitution Method:	<ol style="list-style-type: none"> 1. Centrifuge at 5,000xg for 5min. 2. Carefully open the tube and add 100ul of sterile water to dissolve the DNA. 3. Close the tube and incubate for 10 minutes at room temperature. 4. Briefly vortex the tube and then do a quick spin (less than 5000xg) to concentrate the liquid at the bottom. 5. Store the suspended plasmid at -20°C. The DNA is stable for at least one year from date of shipping when stored at -20°C.
RefSeq:	NM_032420.5
RefSeq Size:	4779 bp
RefSeq ORF:	3714 bp
Locus ID:	5097
UniProt ID:	Q08174
Cytogenetics:	5q31.3
Domains:	CA
Protein Families:	Transcription Factors, Transmembrane
MW:	130.1 kDa
Gene Summary:	This gene belongs to the protocadherin subfamily within the cadherin superfamily. The encoded protein is a membrane protein found at cell-cell boundaries. It is involved in neural cell adhesion, suggesting a possible role in neuronal development. The protein includes an extracellular region, containing 7 cadherin-like domains, a transmembrane region and a C-terminal cytoplasmic region. Cells expressing the protein showed cell aggregation activity. Alternative splicing occurs in this gene. [provided by RefSeq, Jul 2008]

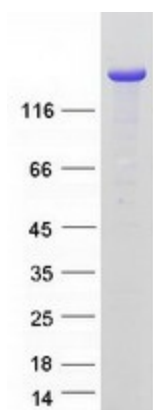
Product images:



Circular map for RC213703



Western blot validation of overexpression lysate (Cat# [LY410117]) using anti-DDK antibody (Cat# [TA50011-100]). Left: Cell lysates from untransfected HEK293T cells; Right: Cell lysates from HEK293T cells transfected with RC213703 using transfection reagent MegaTran 2.0 (Cat# [TT210002]).



Coomassie blue staining of purified PCDH1 protein (Cat# [TP313703]). The protein was produced from HEK293T cells transfected with PCDH1 cDNA clone (Cat# RC213703) using MegaTran 2.0 (Cat# [TT210002]).