

Product datasheet for **RC213695**

Elastin (ELN) (NM_001081754) Human Tagged ORF Clone

Product data:

Product Type:	Expression Plasmids
Product Name:	Elastin (ELN) (NM_001081754) Human Tagged ORF Clone
Tag:	Myc-DDK
Symbol:	ELN
Synonyms:	ADCL1; SVAS; WBS; WS
Vector:	pCMV6-Entry (PS100001)
E. coli Selection:	Kanamycin (25 ug/mL)
Cell Selection:	Neomycin



[View online »](#)

ORF Nucleotide
Sequence:

>RC213695 representing NM_001081754
Red=Cloning site Blue=ORF Green=Tags(s)

TTTTGTAATACGACTCACTATAGGGCGGCCGGGAATTCGTCGACTGGATCCGGTACCGAGGAGATCTGCC
GCCGCGATCGCC

ATGGCGGGTCTGACGGCGCGGCCCGCGGCCGGAGTCTCCTGCTCCTGCTGTCCATCTCCACCCT
CTCGGCCCTGGAGGGTCCCTGGGGCCATTCTGTGGAGTTCCTGGAGGAGTCTTTTATCCAGGGCTGG
TCTCGGAGCCCTTGAGGAGGAGCGCTGGGGCCTGGAGGCAAACCTTTAAGCCAGTTCCCGGAGGGCTT
GCGGGTGTGGCCTTGGGGCAGGGCTCGGGCCTTCCCGCAGTTACCTTTCCGGGGCTCTGGTGCCTG
GTGGAGTGGCTGACGCTGCTGCAGCCTATAAAGCTGCTAAGGCTGGCGCTGGGCTTGGTGGTGTCCAGG
AGTTGGTGGCTTAGGAGTGTCTGCAGCCCTTCTGTGCCAGGTGCGGTGGTTCTCAGCCTGGAGCCGGA
GTGAAGCCTGGGAAAGTCCCGGGTGTGGGGCTGCCAGGTGATACCCAGGTGGCGTCTCCAGGAGCTC
GGTCCCGGTGTGGGGTGTCTCCCTGGAGTCCCACTGGAGCAGGAGTTAAGCCAAAGGCTCCAGGTGT
AGGTGGAGCTTTGCTGGAATCCAGGAGTTGGACCCTTTGGGGACCGCAACCTGGAGTCCCACTGGGG
TATCCCATCAAGGCCCAAGCTGCCTGGTGGCTATGGACTGCCCTACACCACAGGGAAACTGCCCTATG
GCTATGGGCCCGGAGGAGTGGCTGGTGCAGCGGCAAGGCTGGTTACCCAACAGGGACAGGGGTTGGCC
CCAGGCAGCAGCAGCAGCGGCAGCTAAAGCAGCAGCAAAGTTCGGTGTGGAGCAGCCGGAGTCTCCCT
GGTGTGGAGGGGCTGGTGTTCCTGGCGTGCCTGGGGCAATTCCTGGAATTGGAGGCATCGCAGGCGTTG
GGACTCCAGTGCAGTGCAGCTGCAGCAGCAGCCGCTAAGGCAGCAAGTATGGAGTGTGCAGGCTT
AGTGCCTGGTGGCCAGGCTTTGGCCGGGAGTAGTTGGTGTCCAGGAGCTGGCGTTCAGGTGTGGT
GTCCAGGAGCTGGGATCCAGTTGTCCAGGTGCTGGGATCCAGGTGCTGCGGTTCCAGGGTGTGT
CACCAGAAGCAGTGTCTAAGGCAGCTGCAAAGGCAGCAAATACGGGGCCAGGCCGGAGTCCGAGTTGG
AGGCATTCTACTTACGGGGTGGAGCTGGGGCTTTCCCGCTTTGGTGTGCGAGTCCGAGGTATCCCT
GGAGTGCAGGTGTCCCTGGTGTGCGAGGTGTTCCCGGAGTCCGAGGTGTCCCGGAGTTGGCATTCC
CCGAAGCTCAGGCAGCAGCTGCCGCAAGGCTGCCAAGTACGGAGTGGGGACCCAGCAGCTGCAGCTGC
TAAAGCAGCCGCAAAGCCGCCAGTTTGGGTTAGTTCCTGGTGTGCGCGTGGCTCCTGGAGTTGGCGT
GCTCCTGGTGTGCGGTGTGGCTCCTGGAGTTGGCTTGGCTCCTGGAGTTGGCGTGGCTCCTGGAGTTGGT
TGGCTCCTGGCGTTGGCGTGGCTCCCGCATTGGCCCTGGTGGAGTTGCAGCTGCAGCAAATCCGCTGC
CAAGGTGGCTGCCAAAGCCAGCTCCGAGCTGCAGCTGGGCTTGGTGTGGCATCCCTGGACTTGGAGTT
GGTGTGCGCGTCCCTGGACTTGGAGTTGGTGTGCTGGTGTCTGGACTTGGAGTTGGTGTGTTCTGT
GCTTCGGGGCAGTACCTGGAGCCCTGGCTGCCGCTAAAGCAGCAAATATGGAGCAGCAGTGCCTGGGGT
CCTTGGAGGGCTCGGGGCTCTCGGTGGAGTAGGCATCCAGGCGGTGTGGTGGGAGCCGGACCCGCC
GCCGCTGCCGAGCAAAGCTGTGCCAAAGCCGCCAGTTTGGCCTAGTGGGAGCCGCTGGGCTCGGAG
GACTCGGAGTCCGAGGGCTTGGAGTTCCAGGTGTGGGGGCTTGGAGGTATACCTCCAGCTGCAGCCGC
TAAAGCAGCTAAATACGGAGTGGCAGCAAGACCTGGCTTCGGATTGTCTCCATTTCCAGGTGGGGCC
TGCTGGGAAAGCTTGTGGCCGAAGAGAAAA

ACGCGTACGCGGCCGCTCGAGCAGAACTCATCTCAGAAGAGGATCTGGCAGCAAATGATATCCTGGATT
ACAAGGATGACGACGATAAGGTTTAA

Protein Sequence: >RC213695 representing NM_001081754
 Red=Cloning site Green=Tags(s)

MAGLTAAAPRPGVLLLLLSILHPSRPGGVPGAIPGGVPGGVFYPGAGLGALGGGALGPGGKPLKPVPGG
 AGAGLGAGLGAFPAVTFPGALVPGGVADAAAAYKAAKAGAGLGGVPGVGGGLGVSAAPSVPGAVVPQPGAG
 VKPGKVPVGLPGVYPPGGVLPGARFPVGVLPVPTGAGVKKAPGVGGAFAGIPVGPFGGPQPGVPLG
 YPIKAPKLPGGYGLPYTTGKLPYGYGPGGVAGAAGKAGYPTGTGVPQAAAAAAAAAKAAAFGAGAAGVLP
 GVGAGVPGVPGAIPGIIGGIAGVGTAAAAAATAAKAAKYGAAAGLVPGGPGFPGVVGVPGAGVPGVG
 VPGAGIPVVPAGIPGAAVPGVVSPEAAAAATAAKAAKYGARPGVGGIPTYGVGAGGFPFGVGVGGIP
 GVAGVPGVGGVPGVGGVPGVISPEAQAATAAKAAKYGVGTAAAAAATAAKAAQFGLVPGVGVAPGVG
 APGVGVAPGVGLAPGVGVAPGVGVAPGVVAPGIGPGVAAAAKSAAKVAQAQLRAAGLGAGIPGLGV
 GVGVPGLGVGAGVPLGVGAGVPFGAVPGALAAAKAAKYGAAVPGVLLGGLGALGGVGPVGGVAGPAA
 AAAAAATAAKAAQFGLVGAAGLGLGVGGLGVPVGGGLGIPAAAAATAKYGVAARPGFGLSPIFGGA
 CLGKACGRKRK

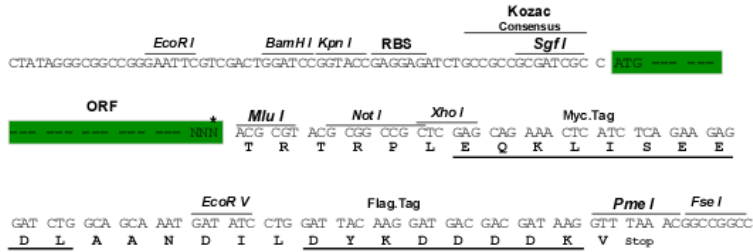
TRTRPLEQKLISEEDLAANDILDYKDDDDKV

Restriction Sites:

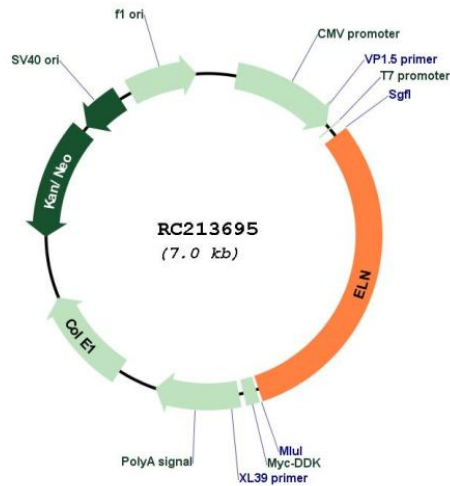
Sgfl-MluI

Cloning Scheme:

Cloning sites used for ORF Shuttling:



* The last codon before the Stop codon of the ORF

Plasmid Map:


ACCN: NM_001081754

ORF Size: 2133 bp

OTI Disclaimer: The molecular sequence of this clone aligns with the gene accession number as a point of reference only. However, individual transcript sequences of the same gene can differ through naturally occurring variations (e.g. polymorphisms), each with its own valid existence. This clone is substantially in agreement with the reference, but a complete review of all prevailing variants is recommended prior to use. [More info](#)

OTI Annotation: This clone was engineered to express the complete ORF with an expression tag. Expression varies depending on the nature of the gene.

Components: The ORF clone is ion-exchange column purified and shipped in a 2D barcoded Matrix tube containing 10ug of transfection-ready, dried plasmid DNA (reconstitute with 100 ul of water).

Reconstitution Method:

1. Centrifuge at 5,000xg for 5min.
2. Carefully open the tube and add 100ul of sterile water to dissolve the DNA.
3. Close the tube and incubate for 10 minutes at room temperature.
4. Briefly vortex the tube and then do a quick spin (less than 5000xg) to concentrate the liquid at the bottom.
5. Store the suspended plasmid at -20°C. The DNA is stable for at least one year from date of shipping when stored at -20°C.

RefSeq: [NM_001081754.3](#)

RefSeq Size: 3441 bp

RefSeq ORF: 2136 bp

Locus ID:	2006
UniProt ID:	P15502
Cytogenetics:	7q11.23
Protein Families:	Druggable Genome, Secreted Protein, Transmembrane
MW:	61.61 kDa
Gene Summary:	<p>This gene encodes a protein that is one of the two components of elastic fibers. Elastic fibers comprise part of the extracellular matrix and confer elasticity to organs and tissues including the heart, skin, lungs, ligaments, and blood vessels. The encoded protein is rich in hydrophobic amino acids such as glycine and proline, which form mobile hydrophobic regions bounded by crosslinks between lysine residues. Degradation products of the encoded protein, known as elastin-derived peptides or elastokines, bind the elastin receptor complex and other receptors and stimulate migration and proliferation of monocytes and skin fibroblasts. Elastokines can also contribute to cancer progression. Deletions and mutations in this gene are associated with supravalvular aortic stenosis (SVAS) and autosomal dominant cutis laxa. [provided by RefSeq, Aug 2017]</p>