

Product datasheet for **RC213685**

PPM1G (NM_177983) Human Tagged ORF Clone

Product data:

| | |
|---------------------------|--|
| Product Type: | Expression Plasmids |
| Product Name: | PPM1G (NM_177983) Human Tagged ORF Clone |
| Tag: | Myc-DDK |
| Symbol: | PPM1G |
| Synonyms: | PP2CG; PP2CGAMMA; PPP2CG |
| Mammalian Cell Selection: | Neomycin |
| Vector: | pCMV6-Entry (PS100001) |
| E. coli Selection: | Kanamycin (25 ug/mL) |



[View online »](#)

Cloning Scheme:



ACCN: NM_177983

ORF Size: 1638 bp

OTI Disclaimer: Due to the inherent nature of this plasmid, standard methods to replicate additional amounts of DNA in E. coli are highly likely to result in mutations and/or rearrangements. Therefore, OriGene does not guarantee the capability to replicate this plasmid DNA. Additional amounts of DNA can be purchased from OriGene with batch-specific, full-sequence verification at a reduced cost. Please contact our customer care team at custsupport@origene.com or by calling 301.340.3188 option 3 for pricing and delivery.

The molecular sequence of this clone aligns with the gene accession number as a point of reference only. However, individual transcript sequences of the same gene can differ through naturally occurring variations (e.g. polymorphisms), each with its own valid existence. This clone is substantially in agreement with the reference, but a complete review of all prevailing variants is recommended prior to use. [More info](#)

OTI Annotation: This clone was engineered to express the complete ORF with an expression tag. Expression varies depending on the nature of the gene.

Components: The ORF clone is ion-exchange column purified and shipped in a 2D barcoded Matrix tube containing 10ug of transfection-ready, dried plasmid DNA (reconstitute with 100 ul of water).

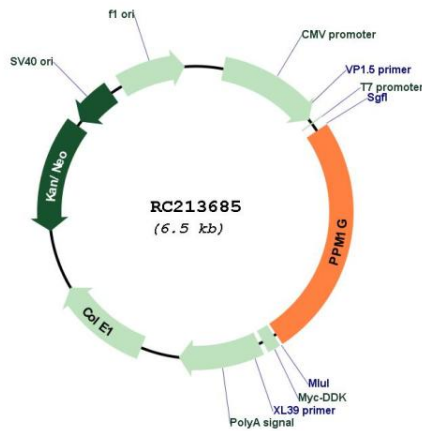
- Reconstitution Method:
1. Centrifuge at 5,000xg for 5min.
 2. Carefully open the tube and add 100ul of sterile water to dissolve the DNA.
 3. Close the tube and incubate for 10 minutes at room temperature.
 4. Briefly vortex the tube and then do a quick spin (less than 5000xg) to concentrate the liquid at the bottom.
 5. Store the suspended plasmid at -20°C. The DNA is stable for at least one year from date of shipping when stored at -20°C.

RefSeq: [NM_177983.3](#)

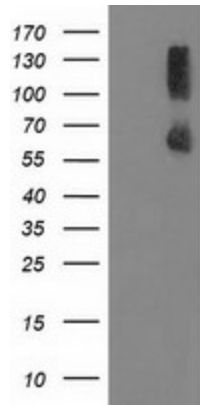
RefSeq Size: 2302 bp
 RefSeq ORF: 1641 bp
 Locus ID: 5496
 UniProt ID: [O15355](#)
 Cytogenetics: 2p23.3
 Protein Families: Druggable Genome, Phosphatase
 MW: 59.3 kDa

Gene Summary: The protein encoded by this gene is a member of the PP2C family of Ser/Thr protein phosphatases. PP2C family members are known to be negative regulators of cell stress response pathways. This phosphatase is found to be responsible for the dephosphorylation of Pre-mRNA splicing factors, which is important for the formation of functional spliceosome. Studies of a similar gene in mice suggested a role of this phosphatase in regulating cell cycle progression. [provided by RefSeq, Apr 2010]

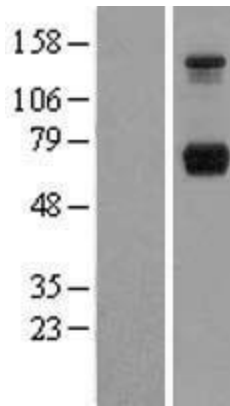
Product images:



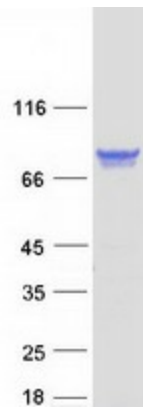
Circular map for RC213685



HEK293T cells were transfected with the pCMV6-ENTRY control (Cat# [PS100001], Left lane) or pCMV6-ENTRY PPM1G (Cat# RC213685, Right lane) cDNA for 48 hrs and lysed. Equivalent amounts of cell lysates (5 ug per lane) were separated by SDS-PAGE and immunoblotted with anti-PPM1G(Cat# [TA502232]). Positive lysates [LY406071] (100ug) and [LC406071] (20ug) can be purchased separately from OriGene.



Western blot validation of overexpression lysate (Cat# [LY406071]) using anti-DDK antibody (Cat# [TA50011-100]). Left: Cell lysates from untransfected HEK293T cells; Right: Cell lysates from HEK293T cells transfected with RC213685 using transfection reagent MegaTran 2.0 (Cat# [TT210002]).



Coomassie blue staining of purified PPM1G protein (Cat# [TP313685]). The protein was produced from HEK293T cells transfected with PPM1G cDNA clone (Cat# RC213685) using MegaTran 2.0 (Cat# [TT210002]).