

Product datasheet for **RC213683**

Cell adhesion molecule 4 (CADM4) (NM_145296) Human Tagged ORF Clone

Product data:

Product Type:	Expression Plasmids
Product Name:	Cell adhesion molecule 4 (CADM4) (NM_145296) Human Tagged ORF Clone
Tag:	Myc-DDK
Symbol:	Cell adhesion molecule 4
Synonyms:	IGSF4C; Necl-4; NECL4; synCAM4; TSLL2
Mammalian Cell Selection:	Neomycin
Vector:	pCMV6-Entry (PS100001)
E. coli Selection:	Kanamycin (25 ug/mL)
ORF Nucleotide Sequence:	>RC213683 representing NM_145296 Red=Cloning site Blue=ORF Green=Tags(s)

TTTTGTAATACGACTCACTATAGGGCGGCCGGAATTCGTCGACTGGATCCGGTACCGAGGAGATCTGCC
GCC**CGATCGCC**

ATGGGCCGGGCCGGCGCTTCCAGTGGCCGCTGCTGCTGCTGTTGGCCGGCCGGCGGGCCAGGGGCAG
GACAGGAAGTACAGACAGAGAACGTGACAGTGGCTGAGGGTGGGTGGCTGAGATCACCTGCCGTCTGCA
CCAGTATGATGGGTCCATAGTTGTCATCCAGAACCAGCCGGCAGACCCCTTTCTTCAATGGCACCCGT
GCCTTGAAGGATGAGCGTTTCCAGCTTGGAGGTTCTCCACGCGGGTGGGATCCGGCTCTCAGATG
CCCGCTGGAGGACGAGGGGGCTATTTCTGCCAGCTCTACACAGAAGACACCCACCACCAGATTGCCAC
GCTCACGGTACTAGTGGCCCAGAGAATCCTGTGGTGGAGGTCCGGGAGCAGGCGGTAGAGGGCGGCGAG
GTGGAGCTCAGCTGCCTCGTCCGCGGTCCCGTCCGGCTGCCACCTGCGCTGGTACCGGACCGCAAGG
AGCTGAAAGGAGTGAGCAGCAGCCAGGAAAATGGCAAGGTCTGGAGCGTGGCAAGCACAGTACGGTTTCG
TGTGGACCGTAAGGACGACGGTGGTATCATCATCTGTGAGGCGCAGAACCAGGCGTGCCTCCGGACAC
AGCAAGCAGACGAGTACGTGCTGGATGTGAGTACTCCCCACGGCCGGATTCATGCCTCCAAGCTG
TGGTGAAGGAGGGAGACACGCTGGTGTGACGTGTGCTGTACGGGAACCCAGGCCAAACCAGATCCG
CTGGAACCGCGGAATGAGTCTTTGCCGAGAGGGCGGAGGCCGTGGGAGAGACGCTCACGCTGCCGGGT
CTGGTATCCGCGGATAACGGCACCTACACTTGCAGGCGTCCAATAAGCACGGCCATGCGAGGGCGCTCT
AGGTACTTGTGGTCTACGACCCTGGTGGTGGTGGTGGTGGTGGTGGTGGTGGTGGTGGTGGTGGTGGT
CGGCATCTGGCGCTGCTGGTGTCTGATCATATGTGTGCTAGTGGCATGGTCTGGTGTCTGGTACGG
CAGAAGGGTTCCTATCTGACCCAGAACCCAGTGGCTGGATGAACAGGGAGAAGCAAGAGAAGCCTTCC
TCAATGGCAGCGACGGACACAAGAGGAAAGAGGAATTCCTCATC

ACGGTACGGGCCGCTCGAGCAGAACTCATCTCAGAAGAGGATCTGGCAGCAATGATATCCTGGATT
ACAAGGATGACGACGATAAGGTTTAA



[View online »](#)

Protein Sequence: >RC213683 representing NM_145296
Red=Cloning site Green=Tags(s)

MGRARRFQWPLLLLWAAAAGPGAGQEVQNTENVVAEGGVAEITCRLHQYDGSIVVIQNPARQTLFFNGTR
 ALKDERFQLEEFSPRRVRIRLSDARLEDEGGYFCQLYTEDTHHQIATLTVLVAPENPVVEVREQAVEGGE
 VELSCLVPRSRPAATLRWYRDRKELKGVSSSQENGVVSVASTVRFVRVDRKDDGGIIICEAQNQALPSGH
 SKQTQYVLDVQYSPTARIHASQAVVREGDTLVLCAVTGNPRPNQIRWNRGNESLPERAEAVGETLTLPG
 LVSADNGTYTCEASNKHGHARALVYLVVYDPGAVVVAQTSVPYAIYVGGILALLVFLIICVLVGMVWCSVR
 QKGSYLTHEASGLDEQGEAREAFNLNGSDGHRKKEEFFI

TRTRPLEQKLISEEDLAANDILDYKDDDDKV

Chromatograms: https://cdn.origene.com/chromatograms/mk6120_h04.zip

Restriction Sites: SgfI-MluI

Cloning Scheme:



* The last codon before the Stop codon of the ORF

ACCN: NM_145296

ORF Size: 1164 bp

OTI Disclaimer: The molecular sequence of this clone aligns with the gene accession number as a point of reference only. However, individual transcript sequences of the same gene can differ through naturally occurring variations (e.g. polymorphisms), each with its own valid existence. This clone is substantially in agreement with the reference, but a complete review of all prevailing variants is recommended prior to use. [More info](#)

OTI Annotation: This clone was engineered to express the complete ORF with an expression tag. Expression varies depending on the nature of the gene.

Components: The ORF clone is ion-exchange column purified and shipped in a 2D barcoded Matrix tube containing 10ug of transfection-ready, dried plasmid DNA (reconstitute with 100 ul of water).

Reconstitution Method:

1. Centrifuge at 5,000xg for 5min.
2. Carefully open the tube and add 100ul of sterile water to dissolve the DNA.
3. Close the tube and incubate for 10 minutes at room temperature.
4. Briefly vortex the tube and then do a quick spin (less than 5000xg) to concentrate the liquid at the bottom.
5. Store the suspended plasmid at -20°C. The DNA is stable for at least one year from date of shipping when stored at -20°C.

RefSeq: [NM_145296.2](#)

RefSeq Size: 2176 bp

RefSeq ORF: 1167 bp

Locus ID: 199731

UniProt ID: [Q8NFZ8](#)

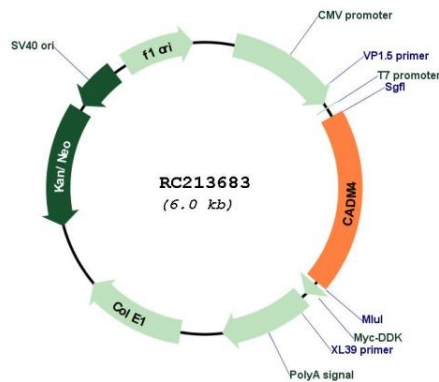
Cytogenetics: 19q13.31

Protein Families: Transmembrane

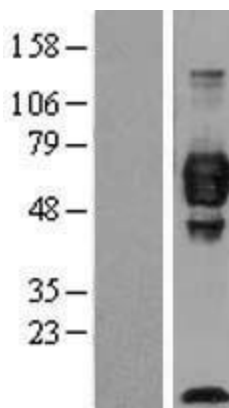
MW: 42.6 kDa

Gene Summary: Involved in the cell-cell adhesion. Has calcium- and magnesium-independent cell-cell adhesion activity. May have tumor-suppressor activity.[UniProtKB/Swiss-Prot Function]

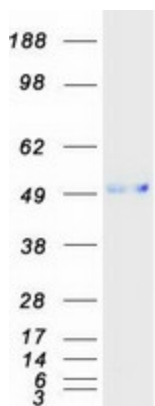
Product images:



Circular map for RC213683



Western blot validation of overexpression lysate (Cat# [LY403428]) using anti-DDK antibody (Cat# [TA50011-100]). Left: Cell lysates from untransfected HEK293T cells; Right: Cell lysates from HEK293T cells transfected with RC213683 using transfection reagent MegaTran 2.0 (Cat# [TT210002]).



Coomassie blue staining of purified CADM4 protein (Cat# [TP313683]). The protein was produced from HEK293T cells transfected with CADM4 cDNA clone (Cat# RC213683) using MegaTran 2.0 (Cat# [TT210002]).