

Product datasheet for **RC213682**

PKIG (NM_007066) Human Tagged ORF Clone

Product data:

Product Type: Expression Plasmids
Product Name: PKIG (NM_007066) Human Tagged ORF Clone
Tag: Myc-DDK
Symbol: PKIG
Synonyms: PKI-gamma
Mammalian Cell Selection: Neomycin
Vector: pCMV6-Entry (PS100001)
E. coli Selection: Kanamycin (25 ug/mL)
ORF Nucleotide Sequence: >RC213682 ORF sequence
Red=Cloning site Blue=ORF Green=Tags(s)

TTTTGTAATACGACTCACTATAGGGCGCCGGAATTCGTCGACTGGATCCGGTACCGAGGAGATCTGCC
GCC**CGATCGCC**

ATGATGGAGGTCGAGTCCTCTACTCGGACTTCATCTCCTGTGACCGGACAGGCCGTCGGAATGCGGTCC
CTGACATCCAGGGAGACTCAGAGGCTGTGAGCGTGAGGAAGCTGGCTGGAGACATGGCGAGCTGGCACT
CGAGGGGGCAGAAGGACAGGTGGAGGGAAGCGCCCCAGACAAGGAAGCTGGCAACCAGCCCCAGAGCAGC
GATGGGACCACCTCGTCT

ACGCGTACGCGGCCGCTCGAGCAGAACTCATCTCAGAAGAGGATCTGGCAGCAAATGATATCCTGGATT
ACAAGGATGACGACGATAAGGTTTAA

Protein Sequence: >RC213682 protein sequence
Red=Cloning site Green=Tags(s)
MMEVESSYDFISCDRTGRRNAVPIQGDSEAVSVRKLADMGELALEGAEGQVEGSAPDKEAGNPQSS
DGTSS

TRTRPLEQKLISEEDLAANDILDYKDDDDKV

Chromatograms: https://cdn.origene.com/chromatograms/mk6446_g08.zip

Restriction Sites: Sgfl-MluI



[View online »](#)

Cloning Scheme:


ACCN: NM_007066

ORF Size: 228 bp

OTI Disclaimer: The molecular sequence of this clone aligns with the gene accession number as a point of reference only. However, individual transcript sequences of the same gene can differ through naturally occurring variations (e.g. polymorphisms), each with its own valid existence. This clone is substantially in agreement with the reference, but a complete review of all prevailing variants is recommended prior to use. [More info](#)

OTI Annotation: This clone was engineered to express the complete ORF with an expression tag. Expression varies depending on the nature of the gene.

Components: The ORF clone is ion-exchange column purified and shipped in a 2D barcoded Matrix tube containing 10ug of transfection-ready, dried plasmid DNA (reconstitute with 100 ul of water).

- Reconstitution Method:**
1. Centrifuge at 5,000xg for 5min.
 2. Carefully open the tube and add 100ul of sterile water to dissolve the DNA.
 3. Close the tube and incubate for 10 minutes at room temperature.
 4. Briefly vortex the tube and then do a quick spin (less than 5000xg) to concentrate the liquid at the bottom.
 5. Store the suspended plasmid at -20°C. The DNA is stable for at least one year from date of shipping when stored at -20°C.

Note: Plasmids are not sterile. For experiments where strict sterility is required, filtration with 0.22um filter is required.

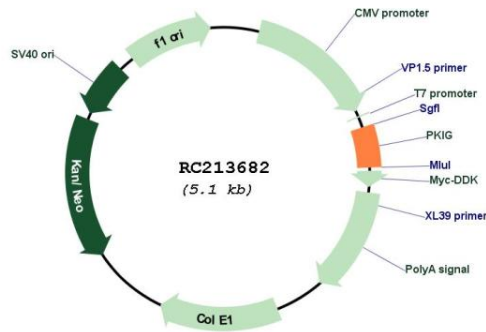
RefSeq: [NM_007066.5](#)

RefSeq Size: 1201 bp

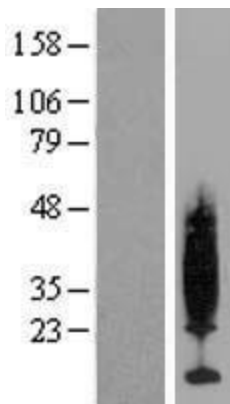
RefSeq ORF: 231 bp
Locus ID: 11142
UniProt ID: [Q9Y2B9](#)
Cytogenetics: 20q13.12
Domains: PKI
Protein Families: Druggable Genome
MW: 7.9 kDa

Gene Summary: This gene encodes a member of the protein kinase inhibitor family. Studies of a similar protein in mice suggest that this protein acts as a potent competitive cAMP-dependent protein kinase inhibitor, and is a predominant form of inhibitor in various tissues. The encoded protein may be involved in osteogenesis. Alternative splicing results in multiple transcript variants. [provided by RefSeq, Jul 2013]

Product images:



Circular map for RC213682



Western blot validation of overexpression lysate (Cat# [LY416230]) using anti-DDK antibody (Cat# [TA50011-100]). Left: Cell lysates from untransfected HEK293T cells; Right: Cell lysates from HEK293T cells transfected with RC213682 using transfection reagent MegaTran 2.0 (Cat# [TT210002]).