

## Product datasheet for RC213681L1

### Semaphorin 3A (SEMA3A) (NM\_006080) Human Tagged Lenti ORF Clone

#### Product data:

Product Type:	Expression Plasmids
Product Name:	Semaphorin 3A (SEMA3A) (NM_006080) Human Tagged Lenti ORF Clone
Tag:	Myc-DDK
Symbol:	Semaphorin 3A
Synonyms:	coll-1; COLL1; HH16; Hsema-I; Hsema-III; SEMA1; SEMAD; SEMAIII; SEMAL; SemD
Mammalian Cell Selection:	None
Vector:	pLenti-C-Myc-DDK (PS100064)
E. coli Selection:	Chloramphenicol (34 ug/mL)
ORF Nucleotide Sequence:	The ORF insert of this clone is exactly the same as(RC213681).
Restriction Sites:	SgfI-MluI
Cloning Scheme:	

Cloning sites used for ORF Shuttling:



\* The last codon before the Stop codon of the ORF.

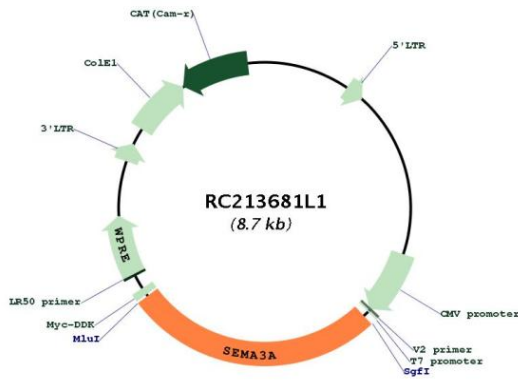
ACCN:	NM_006080
ORF Size:	2313 bp



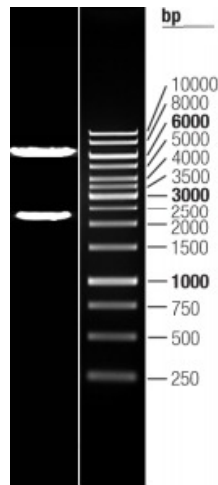
[View online »](#)

<b>OTI Disclaimer:</b>	The molecular sequence of this clone aligns with the gene accession number as a point of reference only. However, individual transcript sequences of the same gene can differ through naturally occurring variations (e.g. polymorphisms), each with its own valid existence. This clone is substantially in agreement with the reference, but a complete review of all prevailing variants is recommended prior to use. <a href="#">More info</a>
<b>OTI Annotation:</b>	This clone was engineered to express the complete ORF with an expression tag. Expression varies depending on the nature of the gene.
<b>Components:</b>	The ORF clone is ion-exchange column purified and shipped in a 2D barcoded Matrix tube containing 10ug of transfection-ready, dried plasmid DNA (reconstitute with 100 ul of water).
<b>Reconstitution Method:</b>	<ol style="list-style-type: none"><li>1. Centrifuge at 5,000xg for 5min.</li><li>2. Carefully open the tube and add 100ul of sterile water to dissolve the DNA.</li><li>3. Close the tube and incubate for 10 minutes at room temperature.</li><li>4. Briefly vortex the tube and then do a quick spin (less than 5000xg) to concentrate the liquid at the bottom.</li><li>5. Store the suspended plasmid at -20°C. The DNA is stable for at least one year from date of shipping when stored at -20°C.</li></ol>
<b>RefSeq:</b>	<a href="#">NM_006080.1</a> , <a href="#">NP_006071.1</a>
<b>RefSeq Size:</b>	2530 bp
<b>RefSeq ORF:</b>	2316 bp
<b>Locus ID:</b>	10371
<b>UniProt ID:</b>	<a href="#">Q14563</a>
<b>Cytogenetics:</b>	7q21.11
<b>Domains:</b>	Sema, ig, IG, PSI
<b>Protein Families:</b>	Secreted Protein
<b>Protein Pathways:</b>	Axon guidance
<b>MW:</b>	88.89 kDa
<b>Gene Summary:</b>	This gene is a member of the semaphorin family and encodes a protein with an Ig-like C2-type (immunoglobulin-like) domain, a PSI domain and a Sema domain. This secreted protein can function as either a chemorepulsive agent, inhibiting axonal outgrowth, or as a chemoattractive agent, stimulating the growth of apical dendrites. In both cases, the protein is vital for normal neuronal pattern development. Increased expression of this protein is associated with schizophrenia and is seen in a variety of human tumor cell lines. Also, aberrant release of this protein is associated with the progression of Alzheimer's disease. [provided by RefSeq, Jul 2008]

Product images:



Circular map for RC213681L1



Double digestion of RC213681L1 using SgfI and MluI