

Product datasheet for **RC213676**

LMF1 (NM_022773) Human Tagged ORF Clone

Product data:

Product Type:	Expression Plasmids
Product Name:	LMF1 (NM_022773) Human Tagged ORF Clone
Tag:	Myc-DDK
Symbol:	LMF1
Synonyms:	C16orf26; HMFN1876; JFP11; TMEM112; TMEM112A
Mammalian Cell Selection:	Neomycin
Vector:	pCMV6-Entry (PS100001)
E. coli Selection:	Kanamycin (25 ug/mL)



[View online »](#)

ORF Nucleotide Sequence:

>RC213676 representing NM_022773
 Red=Cloning site Blue=ORF Green=Tags(s)

TTTTGTAATACGACTCACTATAGGGCGGCCGGGAATTCGTCGACTGGATCCGGTACCGAGGAGATCTGCC
 GCC**GCGATCGCC**

ATGCGCCCTGACAGCCAAACAATGGCGGCGCCCGGAGTCGCTGAGGAGCGGAAGACTGGTACTCGG
 ATCCGGAGCCTGAGTCGCCGCCCGCGCCGGGCGTGGCCCGCAGGCTCTCCGGCCATCTCCACACGGG
 CACCTTCTGGCTGACCCGGATCGTGCTCCTGAAGGCCCTAGCCTTCGTGTAATTCGTGGCATTCTGGTG
 GCTTCCATCAGAACAAGCAGCTCATCGGTGACAGGGGGCTGCTCCCTGCAGAGTGTCTGAAGAACT
 TCCAGCAGTACTCCAGGACAGGACAAGCTGGGAAGTCTTCAGCTACATGCCACCATCTCTGGCTGAT
 GGACTGGTCAGACATGAATCCAACCTGGACTTGTGGCTCTTCTCGGACTGGGCATCTCGTCTTTCGTA
 CTGATCACGGGCTGCGCCAACATGCTTCTCATGGCTGCCCTGTGGGGCCTCTACATGTCCCTGGTTAATG
 TGGCCATGTCTGGTACTCTTTCGGATGGGAGTCCAGCTTCTGGAGACAGGATTCCTGGGGATCTTCT
 TGCCCTCTGTGGACGCTGTCAAGGCTGCCCCAGCATACCCACATCCCGGATTGCTGTGGGGCTTC
 CGGTGGCTGATCTCAGGATCATGCTTGGAGCAGGCTGATCAAGATCCGGGGGACCGGTGCTGGCGAG
 ACCTCACCTGCATGGACTTCCACTATGAGACCCAGCCGATGCCCAATCCTGTGGCGTACTACCTGCACCA
 CTCACCCTGGTGGTTCCATCGCTTCGAGACGCTCAGCAACCATTTCATCGAGCTCCTGGTGCCTTCTTC
 CTCTTCTCGGCCGGCGGGCGTGCATCATCCACGGGGTGTGCAGATCCTGTTCCAGGCCGTCTCATCG
 TCAGCGGGAACCTCAGCTTCTGAACTGGCTGACTATGGTGCCAGCCTGGCCTGCTTGTGACGCCAC
 CCTGGGATTCTTGTCCCTCTGGGCCAGGCAGCCTGAAGGACCGAGTTCAGATGCAGAGGGACATC
 CGAGGGGCCCGGCCGAGCCAGATTCCGCTCCGTGGTGGCGCTGCAGCAACGTCTCGCTGGGGCTCC
 TGCTGGCCTGGCTCAGCGTGGCTGCTCAACTTGTGAGCTCCAGGCAGGTATGAACACCCACTT
 CAACTCTTTCACATCGTCAACACTTACGGGCCCTTCGGAAGCATCACCAAGGAGCGGGCGGAGGTGATC
 CTGACAGGCACAGCCAGCTCCAACGCCAGCGCCCGGATGCCATGTGGGAGGACTACGAGTTCAGTGCA
 AGCCAGGTGACCCAGCAGACGGCCCTGCCTCATCTCCCGTACCACTACCGCCTGGACTGGCTGATGTG
 GTTCGCGGCCCTCCAGACCTACGAGCACAACGACTGGATCATCCACCTGGCTGGCAAGCTCCTGGCCAGC
 GACGCCGAGGCCCTGTCCCTGCTGGCACACAACCCCTTCGCGGGCAGGCCCGCCAGGTGGTCCGAG
 GAGAGCACTACAGGTACAAGTTCAGCCGCTCCTGGGGCAGGCACGCCCGCCAGGGCAAGTGGTGGTGCG
 GAAGAGGATCGGAGCCTACTTCCCTCCGCTCAGCCTGGAGGAGCTGAGGCCCTACTTCAGGGACCGTGG
 TGGCCTCTGCCCGGGCCCTC

ACGCGTACGCGGCCGCTCGAGCAGAAACTCATCTCAGAAGAGGATCTGGCAGCAAATGATATCCTGGATT
 ACAAGGATGACGACGATAAGGTTTAA

Protein Sequence:

>RC213676 representing NM_022773
 Red=Cloning site Green=Tags(s)

MRPDSPTMAAPAESLRRRKTGYSDEPEPEPAPGRGPAGSPAHLHTGTFWLTRIVLLKALAFVYFVAFLV
 AFHQNKQLIGDRGLLPCRVLKQYFQDRTSWEVFSYPTILWMDWSDMNSNLDLLALLGLGISSFV
 LITGCANMLLMAALWGLYMSLVNVGHVWYSFGWESQLLETGFLGIFLCPWLTLRSLPQHTPTSRIVLWGF
 RWLIFRIMLGAGLIKIRGDRWRDLTCMDFHYETQMPNPVAYYLHSPWWFHRFETLSNHFIELLPVFF
 LFLGRRACIIHGVLQILFQAVLIVSGNLSFLNWLTMVPSLACFDDATLGFLFSPGPGSLKDRVLQMQRDI
 RGARPEPRFGSVVRRANVSLGVLLAWLSVPVVLNLLSSRQVMNTHFNSLHIVNTYGFAGSITKERAIVI
 LQGTASSNASAPDAMWEDYEFKCKPGDPSRRPCLISPYHYRLDWLWMAAFQTYEHNDWIIHLAGKLLAS
 DAEALSLLAHNPFAGRPPRWVWVGEHYRYKFSRPGGRHAAEGKWWVRKRIGAYFPPLSLEELRPYFRDRG
 WPLPGPL

TRTRPLEQKLISEEDLAANDILDYKDDDDKV

Chromatograms:

https://cdn.origene.com/chromatograms/mk6116_d10.zip

Restriction Sites:

Sgfl-Mlul

Cloning Scheme:


ACCN: NM_022773

ORF Size: 1701 bp

OTI Disclaimer: The molecular sequence of this clone aligns with the gene accession number as a point of reference only. However, individual transcript sequences of the same gene can differ through naturally occurring variations (e.g. polymorphisms), each with its own valid existence. This clone is substantially in agreement with the reference, but a complete review of all prevailing variants is recommended prior to use. [More info](#)

OTI Annotation: This clone was engineered to express the complete ORF with an expression tag. Expression varies depending on the nature of the gene.

Components: The ORF clone is ion-exchange column purified and shipped in a 2D barcoded Matrix tube containing 10ug of transfection-ready, dried plasmid DNA (reconstitute with 100 ul of water).

Reconstitution Method:

1. Centrifuge at 5,000xg for 5min.
2. Carefully open the tube and add 100ul of sterile water to dissolve the DNA.
3. Close the tube and incubate for 10 minutes at room temperature.
4. Briefly vortex the tube and then do a quick spin (less than 5000xg) to concentrate the liquid at the bottom.
5. Store the suspended plasmid at -20°C. The DNA is stable for at least one year from date of shipping when stored at -20°C.

RefSeq: [NM_022773.4](#)

RefSeq Size: 2600 bp

RefSeq ORF: 1704 bp

Locus ID: 64788

UniProt ID: [Q96S06](#)

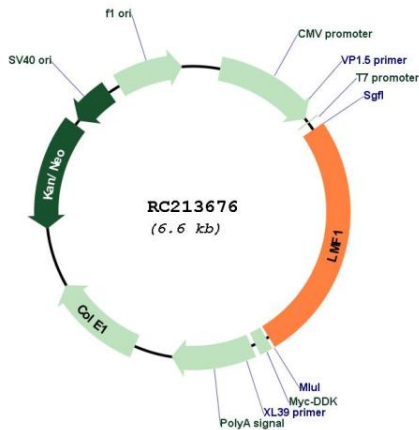
Cytogenetics: 16p13.3

Protein Families: Transmembrane

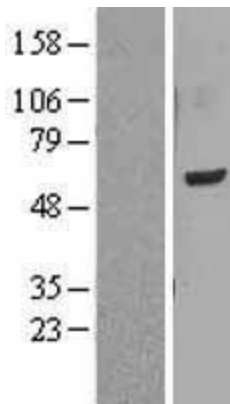
MW: 64.7 kDa

Gene Summary: The protein encoded by this gene resides in the endoplasmic reticulum, and is involved in the maturation and transport of lipoprotein lipase through the secretory pathway. Mutations in this gene are associated with combined lipase deficiency. Alternatively spliced transcript variants have been found for this gene. [provided by RefSeq, May 2010]

Product images:



Circular map for RC213676



Western blot validation of overexpression lysate (Cat# [LY402943]) using anti-DDK antibody (Cat# [TA50011-100]). Left: Cell lysates from untransfected HEK293T cells; Right: Cell lysates from HEK293T cells transfected with RC213676 using transfection reagent MegaTran 2.0 (Cat# [TT210002]).