

## Product datasheet for **RC213660**

### TMEM202 (NM\_001080462) Human Tagged ORF Clone

#### Product data:

Product Type:	Expression Plasmids
Product Name:	TMEM202 (NM_001080462) Human Tagged ORF Clone
Tag:	Myc-DDK
Symbol:	TMEM202
Mammalian Cell Selection:	Neomycin
Vector:	pCMV6-Entry (PS100001)
E. coli Selection:	Kanamycin (25 ug/mL)
ORF Nucleotide Sequence:	>RC213660 representing NM_001080462 Red=Cloning site Blue=ORF Green=Tags(s)

TTTTGTAATACGACTCACTATAGGGCGGCCGGAATTCGTCGACTGGATCCGGTACCGAGGAGATCTGCC  
GCC**CGATCGCC**

ATGGAGCGAAGGGAACATTTAACCTTGACTTTCCACAGTCCTGAGGTTCCCAAAATAAAGGGGAACCGGA  
AATACCAAAGGCCTACCGTCCCTGCCAAGAAACATCCAAGTGCCTCGATGTCATGCCAAAGGCAGCAGCA  
GCTTATGGATCAGGCACACATCTACATCCGAACGCTCTGTGGCAGCCTCTGTAGTTTTAGCCTCCTAATG  
CTGATCGCCATGTCCCACTGAAGTGGTACAGTTTCTGGTGATCAAGAATGGCCTTGAGCTCTACGCAG  
GACTCTGGACCTTATGCAACCATGAGCTGTGCTGGAGCCACACACCAAGCCACCCTATTATCTCCAATA  
TTCCAGGGCCTTCTTTCTCATCTGTCTTTACCATACTTACTGGCCTTGCTGGCTCTTCAGCTCTTGG  
ATCCTTAATCGAGGAAGCATGACCACCAACTTGGATCTGAAGGTATCCATGCTCAGCTTCATCTCAGCTA  
CCTGCTTGCTCCTCTGCCTCAACCTGTTTGTGGCACAGGTTCACTGGCATACTAGGGATGCCATGGAGTC  
AGATCTCCTATGGACCTATTATCTTAACTGGTGCAGTGACATCTTTACATGTTTGTGGGATCATCTCT  
CTTCTCAACTACTTAACTCCAGATCGCCTGCCTGTGATGAAAACGTCAGTGTGATTCCAACAGAGAGAT  
CAAGGCTGGGGTTGGTCCGGTGACTACAGTATCACCTGCTAAAGATGAAGGGCCAAGTCTGAGATGGA  
ATCTCTAAGTGTGAGAGAGAAAAATTTACCAAAGTCAGGACTGTGGTGG

**ACGCGT**ACGCGGCCGCTCGAGCAGAAACTCATCTCAGAAGAGGATCTGGCAGCAAATGATATCCTGGATT  
ACAAGGATGACGACGATAAGGTTTAA



[View online »](#)



**Reconstitution Method:**

1. Centrifuge at 5,000xg for 5min.
2. Carefully open the tube and add 100ul of sterile water to dissolve the DNA.
3. Close the tube and incubate for 10 minutes at room temperature.
4. Briefly vortex the tube and then do a quick spin (less than 5000xg) to concentrate the liquid at the bottom.
5. Store the suspended plasmid at -20°C. The DNA is stable for at least one year from date of shipping when stored at -20°C.

**RefSeq:** [NM\\_001080462.3](#)

**RefSeq Size:** 1296 bp

**RefSeq ORF:** 822 bp

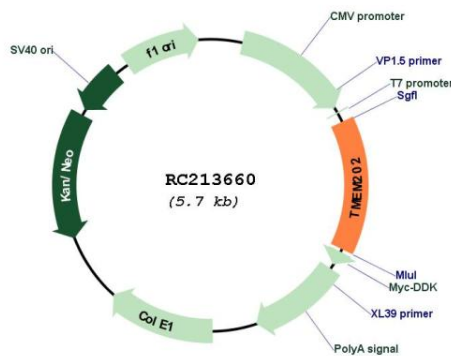
**Locus ID:** 338949

**UniProt ID:** [A6NGA9](#)

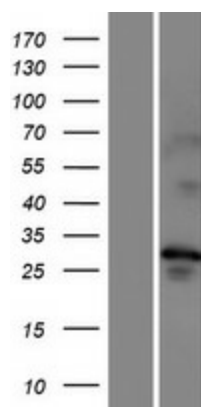
**Cytogenetics:** 15q23-q24.1

**MW:** 31.2 kDa

### Product images:



Circular map for RC213660



Western blot validation of overexpression lysate (Cat# [LY420720]) using anti-DDK antibody (Cat# [TA50011-100]). Left: Cell lysates from untransfected HEK293T cells; Right: Cell lysates from HEK293T cells transfected with RC213660 using transfection reagent MegaTran 2.0 (Cat# [TT210002]).