

Product datasheet for **RC213659**

BEX4 (NM_001080425) Human Tagged ORF Clone

Product data:

Product Type: Expression Plasmids
Product Name: BEX4 (NM_001080425) Human Tagged ORF Clone
Tag: Myc-DDK
Symbol: BEX4
Synonyms: BEXL1
Mammalian Cell Selection: Neomycin
Vector: pCMV6-Entry (PS100001)
E. coli Selection: Kanamycin (25 ug/mL)
ORF Nucleotide Sequence: >RC213659 representing NM_001080425
Red=Cloning site **Blue**=ORF **Green**=Tags(s)

TTTTGTAATACGACTCACTATAGGGCGGCCGGAATTCGTCGACTGGATCCGGTACCGAGGAGATCTGCC
GCC**CGGATCGCC**

ATGGAGTCCAAGAGGAACTAGCGGCAACAATCTCAACGGGAAAAATGCCCAACAAGAAAACGAAGGAG
GGGAGCAGGCCCCACGCAGAATGAAGAAGAATCCCGCCATTTGGGAGGGGGTGAAGGCCAGAAGCCTGG
AGGAAATATCAGGCGGGGCGAGTTAGGCGACTTGCCCTAATTTTCGATGGCCATACCTAATAGGCAT
ATTGAGCACAATGAAGCGAGAGATGATGTAGAAAGTTTGTAGGGCAGATGATGGAAATCAAGAGAAAGA
CTAGGGAACAGCAGATGAGGCACTATATGCGCTCCAAACTCCTGAACCTGACAACCATTATGACTTTTG
CCTCATACCT

ACGCGTACGCGGCCGCTCGAGCAGAAACTCATCTCAGAAGAGGATCTGGCAGCAAATGATATCCTGGATT
ACAAGGATGACGACGATAAGGTTTAA

Protein Sequence: >RC213659 representing NM_001080425
Red=Cloning site **Green**=Tags(s)

MESKEELAANNLNGENAQQENEGGEQAPTQNEEESRHLGGGEGQKPGGNIRRGRVRRLLVPNFRWAIIPNRH
IEHNEARDDVERFVGQMMIEIKRKTREQQMRHYMRFQTPEPDNHYDFCLIP

TRTRPLEQKLISEEDLAANDILDYKDDDDKV

Chromatograms: https://cdn.origene.com/chromatograms/mk8029_f11.zip

Restriction Sites: SgfI-MluI



[View online »](#)

Cloning Scheme:


ACCN: NM_001080425

ORF Size: 360 bp

OTI Disclaimer: The molecular sequence of this clone aligns with the gene accession number as a point of reference only. However, individual transcript sequences of the same gene can differ through naturally occurring variations (e.g. polymorphisms), each with its own valid existence. This clone is substantially in agreement with the reference, but a complete review of all prevailing variants is recommended prior to use. [More info](#)

OTI Annotation: This clone was engineered to express the complete ORF with an expression tag. Expression varies depending on the nature of the gene.

Components: The ORF clone is ion-exchange column purified and shipped in a 2D barcoded Matrix tube containing 10ug of transfection-ready, dried plasmid DNA (reconstitute with 100 ul of water).

- Reconstitution Method:**
1. Centrifuge at 5,000xg for 5min.
 2. Carefully open the tube and add 100ul of sterile water to dissolve the DNA.
 3. Close the tube and incubate for 10 minutes at room temperature.
 4. Briefly vortex the tube and then do a quick spin (less than 5000xg) to concentrate the liquid at the bottom.
 5. Store the suspended plasmid at -20°C. The DNA is stable for at least one year from date of shipping when stored at -20°C.

RefSeq: [NM_001080425.4](#)

RefSeq Size: 1245 bp

RefSeq ORF: 363 bp

Locus ID: 56271

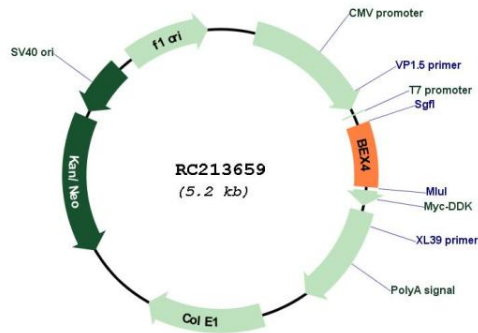
UniProt ID: [Q9NWD9](#)

Cytogenetics: Xq22.1

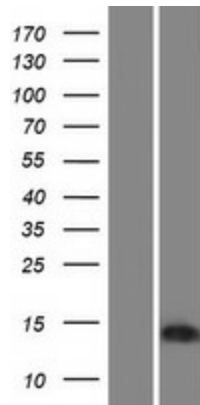
MW: 13.9 kDa

Gene Summary: This gene is a member of the brain expressed X-linked gene family. The proteins encoded by some of the other members of this family act as transcription elongation factors which allow RNA polymerase II to escape pausing during elongation. Multiple alternatively spliced variants, encoding the same protein, have been identified. [provided by RefSeq, Aug 2011]

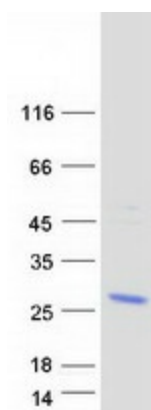
Product images:



Circular map for RC213659



Western blot validation of overexpression lysate (Cat# [LY421642]) using anti-DDK antibody (Cat# [TA50011-100]). Left: Cell lysates from untransfected HEK293T cells; Right: Cell lysates from HEK293T cells transfected with RC213659 using transfection reagent MegaTran 2.0 (Cat# [TT210002]).



Coomassie blue staining of purified BEX4 protein (Cat# [TP313659]). The protein was produced from HEK293T cells transfected with BEX4 cDNA clone (Cat# RC213659) using MegaTran 2.0 (Cat# [TT210002]).