

## Product datasheet for **RC213656**

### SETD6 (NM\_024860) Human Tagged ORF Clone

#### Product data:

|                           |  |
|---------------------------|--|
| Product Type:             | Expression Plasmids                      |
| Product Name:             | SETD6 (NM_024860) Human Tagged ORF Clone |
| Tag:                      | Myc-DDK                                  |
| Symbol:                   | SETD6                                    |
| Mammalian Cell Selection: | Neomycin                                 |
| Vector:                   | pCMV6-Entry (PS100001)                   |
| E. coli Selection:        | Kanamycin (25 ug/mL)                     |



[View online »](#)

**ORF Nucleotide Sequence:**

>RC213656 representing NM\_024860  
 Red=Cloning site Blue=ORF Green=Tags(s)

TTTTGTAATACGACTCACTATAGGGCGGCCGGGAATTCGTCGACTGGATCCGGTACCGAGGAGATCTGCC  
 GCC**CGGATCGCC**

ATGGCGACCCAGGCGAAGCGTCCACGGGTGGCGGGCCCGTGGACGGCGGCGACCTGGATCCTGTGGCCT  
 GCTTCTGAGCTGGTGCCGGCGGGTGGGCTGGAGCTGAGTCCCAAGGTGGCGGTGAGCCGGCAGGGCAC  
 GGTGGCCGGCTACGGCATGGTGGCCGGGAGAGCGTGCAGGCCGGAGAGCTGTTGTTCTGTTGGTGGCCGG  
 GCCGCGCTCCTGTCGAGCACACCTGCTCCATCGGCGGCTGCTGGAGCGAGAGCGAGTTGCGCTGCAGA  
 GCCAGTCGGGCTGGTGGCACTGCTGCTGGCGTCTCCACGAGCTGCAGGCCCGGCTCACGCTGGAG  
 GCCCTACTTTGCGCTCTGGCCGAGCTGGGCGCTTGGAGACCCGATGTTCTGGCCAGAGGAGGAGCGC  
 CGGTGCCTGCTCCAGGGCACAGGCGTACCTGAGGCCGTGAGAAGGATTTGGCCAACATCCGAGCGAGT  
 ACCAGTCCATCGTCTGCCCTTCATGGAAGCCACCCGATCTCTCAGCCTCAGGGTTCGCTCCCTAGA  
 ACTCTACCACAGCTGGTGGCCCTTGATGGCCTATAGCTTTACGGAACCACTGGAGGAAGAAGAGGAT  
 GAAAAGGAGCCAACTCCCCGATGGTGCCTGCTGCAGACATACTAAACCACTTAGCCAAATCACAAACG  
 CCAATCTAGAATACTCTGCGAATTGCTTCGGATGGTAGCCACTCAGCCATTCTAAAGGCCATGAGAT  
 TTTCAACACTTATGGCAATGGCTAAGTGGCAACTGATTCATATGTACGGTTTTGTTGAACCATATCCT  
 GACAACACAGATGACACAGCTGACATTCAGATGGTGACAGTTCGTGAGGCAGCATTACAGGGAACAAAA  
 CTGAAGCTGAAAGGCACCTAGTGTACGAGCGCTGGGATTTCTATGCAAACCTGGAGATGGTAGGGGAAGA  
 GGGAGCCTTTGTGATAGGGAGGGAGGAGGTGCTGACTGAAGAGGAGCTGACCACCACACTAAAGGTACTG  
 TGCATGCCTGCTGAGGAGTTCAGAGAGCTTAAAGACCAGGATGGAGGGGAGATGATAAAAGGGAAGAGG  
 GCAGCCTGACGATCACAAATATCCCAAGCTCAAAGCATCGTGGAGACAGCTGCTTCAAACAGTGTCT  
 ACTGACCTTGCAGACCTATGCCACAGACTTAAAAACTGACCAAGGTTTACTCAGTAATAAGGAAGTCTAT  
 GCGAAACTCAGCTGGAGGGAACAGCAAGCCTTACAGTTCGCTATGGTCAGAAGATGATCTTACATCAGT  
 TGTTGGAGCTGACAAGT

**ACGCGT**ACGCGGCCGCTCGAGCAGAACTCATCTCAGAAGAGGATCTGGCAGCAAATGATATCCTGGATT  
 ACAAGGATGACGACGATAAGGTTTAA

**Protein Sequence:**

>RC213656 representing NM\_024860  
 Red=Cloning site Green=Tags(s)

MATQAKRPRVAGPVDGGDLDPVACFLSWCRRVGLLELSPKVAVSRQGTVAGYGMVARESVQAGELLFVPR  
 AALLSQHTCSIGLLERERVALQSQGWVPLLLALLHELQAPASRWRPYFALWPELGRLEHPMFWPEEER  
 RCLLQGTGVPEAVEKDLANIRSEYQSIVLPMFAHPDLFSLRVRSLLEYHQLVALVMAYSFQEPLEEEED  
 EKEPNSPVMVPAADILNHLANHNANLEYSANCLRMVATQPIPKGHEIFNTYQMANWQLIHMYGFVEPYP  
 DNTDDTADIQMTVREAAALQGKTEAERHLVYERWDFLCKLEMVGEEGAFVIGREEVLTTEEELTTTLKVL  
 CMPAEFRELKQDQGGDDKREEGSLTITNIPKLNKASWRQLLQNSVLLTLQTYATDLKTDQGLLSNKEVY  
 AKLSWREQQALQVRYGQKMLHQLLELTS

**TR**TRPLEQKLISEEDLAANDILDYKDDDDKV

**Chromatograms:**

[https://cdn.origene.com/chromatograms/mk8029\\_g01.zip](https://cdn.origene.com/chromatograms/mk8029_g01.zip)

**Restriction Sites:**

SgfI-MluI

**Cloning Scheme:**


**ACCN:** NM\_024860

**ORF Size:** 1347 bp

**OTI Disclaimer:** The molecular sequence of this clone aligns with the gene accession number as a point of reference only. However, individual transcript sequences of the same gene can differ through naturally occurring variations (e.g. polymorphisms), each with its own valid existence. This clone is substantially in agreement with the reference, but a complete review of all prevailing variants is recommended prior to use. [More info](#)

**OTI Annotation:** This clone was engineered to express the complete ORF with an expression tag. Expression varies depending on the nature of the gene.

**Components:** The ORF clone is ion-exchange column purified and shipped in a 2D barcoded Matrix tube containing 10ug of transfection-ready, dried plasmid DNA (reconstitute with 100 ul of water).

- Reconstitution Method:**
1. Centrifuge at 5,000xg for 5min.
  2. Carefully open the tube and add 100ul of sterile water to dissolve the DNA.
  3. Close the tube and incubate for 10 minutes at room temperature.
  4. Briefly vortex the tube and then do a quick spin (less than 5000xg) to concentrate the liquid at the bottom.
  5. Store the suspended plasmid at -20°C. The DNA is stable for at least one year from date of shipping when stored at -20°C.

**RefSeq:** [NM\\_024860.3](#), [NP\\_079136.2](#)

**RefSeq Size:** 1999 bp

**RefSeq ORF:** 1350 bp

**Locus ID:** 79918

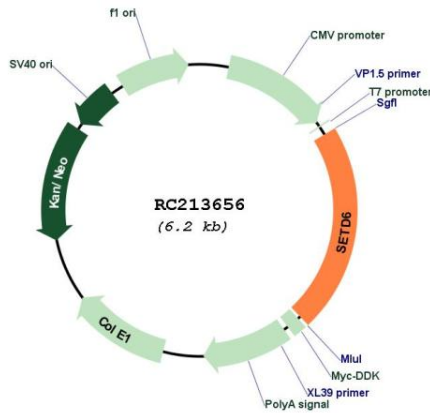
**UniProt ID:** [Q8TBK2](#)

**Cytogenetics:** 16q21

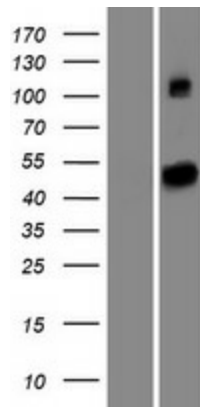
**MW:** 50.6 kDa

**Gene Summary:** This gene encodes a methyltransferase that adds a methyl group to the histone H2AZ, which is involved in nuclear receptor-dependent transcription. The protein also interacts with several endogenous proteins which are involved in nuclear hormone receptor signaling. A related pseudogene is located on chromosome 2. Alternative splicing results in multiple transcript variants. [provided by RefSeq, Jan 2016]

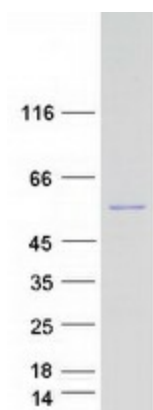
**Product images:**



Circular map for RC213656



Western blot validation of overexpression lysate (Cat# [LY411026]) using anti-DDK antibody (Cat# [TA50011-100]). Left: Cell lysates from untransfected HEK293T cells; Right: Cell lysates from HEK293T cells transfected with RC213656 using transfection reagent MegaTran 2.0 (Cat# [TT210002]).



Coomassie blue staining of purified SETD6 protein (Cat# [TP313656]). The protein was produced from HEK293T cells transfected with SETD6 cDNA clone (Cat# RC213656) using MegaTran 2.0 (Cat# [TT210002]).