

Product datasheet for **RC213655**

FRMD1 (NM_024919) Human Tagged ORF Clone

Product data:

Product Type:	Expression Plasmids
Product Name:	FRMD1 (NM_024919) Human Tagged ORF Clone
Tag:	Myc-DDK
Symbol:	FRMD1
Synonyms:	bA164L23.1
Mammalian Cell Selection:	Neomycin
Vector:	pCMV6-Entry (PS100001)
E. coli Selection:	Kanamycin (25 ug/mL)



[View online »](#)

ORF Nucleotide Sequence:

>RC213655 representing NM_024919
 Red=Cloning site Blue=ORF Green=Tags(s)

TTTTGTAATACGACTCACTATAGGGCGGCCGGAATTCGTCGACTGGATCCGGTACCGAGGAGATCTGCC
 GCC**CGCATCGCC**

ATGGCGGTGCCCCGAGAGGGAGGGGCATAGACCCCGCCCGACAAACCCCTGACACGTTCCCTCCTTCAG
 GGGCGCGATGTATGGAACCCAGTCTGAGAGCCCTGCATGCAGTCAGCAGGAGCCGACCCCTGGGAATGGA
 CGCGATGGCCTCGGAACACAGGGATGTCCTTGTGCTGCTGCCAGCCGGGAGCAACTGCGCTGGCCGTG
 GGGGTGAAGGCTACTGGCCGCGAGCTTTCCAGCAAGTGTGCAACGTGGCAGCATCAGAGACGCGCAGT
 TCTTTGGCCTCTGTGTTGTCAGAAACAATGAGTATATATTTATGGATTTGGAGCAAAAGCTCAGCAAGTA
 CTTCTCAAAGATTGGAAGAAAGAAAGAAATGAAGAAATGAGAAACCCAGAGCCCTTCGTCGGCTTC
 CTCGAGTGCAGCACTACGTGAAAACGGAAGGGTCATAAGCGACCACAGGGCACGGCACCTGTACTACT
 GCCACTGAAGGAGCGCGTGTGAGTACAGTGCCTCACCGGGAGGAAGCCTACTTCTGCTGGCTGC
 CTGCGCGTGCAGGCTGACCTGGCGGAGCACCGGGAGTCGCCCATGCCGGGAGTACTTCGAGCCACAC
 TCCTACTTCCCACAGTGGATCATACCAAGAGGGGGATTGACTACATCCTCCGGCACATGCCTACCTGTC
 ACCGTGAGCGCCAGGGCCTGAGCCCAAGGAGGCCATGCTGTGCTTATCCAGGAGGCTGCCGGCTGGA
 GGACGTGCCCGTGCATTCTTACGGCTGCAAGGATAAGAAGGAAGTTCGCCACCGTGCCTGGGA
 CTGGCCCTCAGGGGAGTGACATCTACCAGGAAAGAAGCTGGAGATCCAGCTGGATGGCTGCCCGCAG
 CACAGAAGCTGGTTTACTACACGGGGTGCACCTGGCGTCCAGGCACCTGCTGCACCTGCTGCGGCCAG
 CCACAGCTCCACCTCCGCGTGGCGCCACTCTGCAACAGCTGCGGCAGCGGGAGGAGGCAGAAGAGAAG
 CAGCACTACCGGGAGTCTATATCAGCGATGAGCTGGAGCTGGACCTGCCAGCAGGAGCTTCCCGGCA
 GTGGGGTACAGCCAGCACTGCCCCACTGCCCTCACGCCACTCCGCCGACAGCCACGCGCATCTCTCA
 CAGTCAAGGCATCAAGGCCAACTCCTGGCTCAGGGAATCCAGAGAGATGTCTGTGGACGTGCCCTTGGAG
 GTCCACGGCTCCATGAGAAGGAGCCGCTCCTCCAGCCCAAGGACCAGCCGAGCCACCCAGCACACGTG
 GTGACAGCAAGCCACTCGTCAGGAGCCCTGCACCGAGGTGAGGACCAGAGGCCAGAGCGCCGAGGCCGT
 GCACCAGATCCAGGAAATGACAGCCGGGTGAGTGGAGCAGCAGCCATGGCTGGATGACATGCAG
 CTGCACCAGTGGCCCTGCACCCAGCGCCACCTCACTCAGCCATACCTTCCACCGGCCCTGGACTGCA
 GGCTGGCAGGCCCTGCGAGACCAGGGCCACTCTCCCAGCAAGAGGTCCAGCAACTGTCTGCCCTGGA
 CCTGTTCCGAGAGGCCCCACCACAGGAGTTTGTGGT

ACGCGTACGCGGCCGCTCGAGCAGAAACTCATCTCAGAAGAGGATCTGGCAGCAAATGATATCCTGGATT
 ACAAGGATGACGACGATAAGGTTTAA

Protein Sequence:

>RC213655 representing NM_024919
 Red=Cloning site Green=Tags(s)

MAVPPRGRGIDPARTNPDTFPPSGARCMEPSPERPACSQQEPTLGMDAMASEHRDVLVLLPSREQLRLAV
 GVKATGRELFQQVCNVASIRDAQFFGLCVVRNNEYIFMDLEQKLSKYFSKDWKKERNEGNEKPRAPFVAF
 LRVQHYVENGRVISEDHRARHLYYCHLKERVLSQCAHREEAYFLAALQADLGEHRESAHAGRYFEPH
 SYFPQWIITKRGIDYILRHMPHLHRERQGLSPKEAMLCFIQEACRLEDVPVHFFRLHKDKKEGRPTVILG
 LALRGVHIYQKKLEIQLDGLPAAQKLVYYTGCTWRSRHLHLLRASHQLHLRVRPTLQQLRQREEAEEK
 QHYRESYISDELELDLASRSFPGSGVSSQHCPHCLSRHSADSHGSSYTSGIKANSWLRESREMSVDVPLE
 VHGLHEKEPSSSPRTSRSHPSTRGDSQATRQEPCTEVTRTRGQSAEAVHQIQEMTAGVSEEQSHGLDDMQ
 LHQLALHPAPTSLSHTFHRALDCLRAGPCETRATLPSKRSSNCLALDLFGEAPPQEFVV

TRTRPLEQKLISEEDLAANDILDYKDDDDKV

Chromatograms:

https://cdn.origene.com/chromatograms/mg4136_h01.zip

Restriction Sites:

SgfI-MluI

Cloning Scheme:

Cloning sites used for ORF Shutting:



* The last codon before the Stop codon of the ORF

ACCN: NM_024919

ORF Size: 1647 bp

OTI Disclaimer: The molecular sequence of this clone aligns with the gene accession number as a point of reference only. However, individual transcript sequences of the same gene can differ through naturally occurring variations (e.g. polymorphisms), each with its own valid existence. This clone is substantially in agreement with the reference, but a complete review of all prevailing variants is recommended prior to use. [More info](#)

OTI Annotation: This clone was engineered to express the complete ORF with an expression tag. Expression varies depending on the nature of the gene.

Components: The ORF clone is ion-exchange column purified and shipped in a 2D barcoded Matrix tube containing 10ug of transfection-ready, dried plasmid DNA (reconstitute with 100 ul of water).

Reconstitution Method:

1. Centrifuge at 5,000xg for 5min.
2. Carefully open the tube and add 100ul of sterile water to dissolve the DNA.
3. Close the tube and incubate for 10 minutes at room temperature.
4. Briefly vortex the tube and then do a quick spin (less than 5000xg) to concentrate the liquid at the bottom.
5. Store the suspended plasmid at -20°C. The DNA is stable for at least one year from date of shipping when stored at -20°C.

RefSeq: [NM_024919.2](#), [NP_079195.2](#)
RefSeq Size: 3008 bp

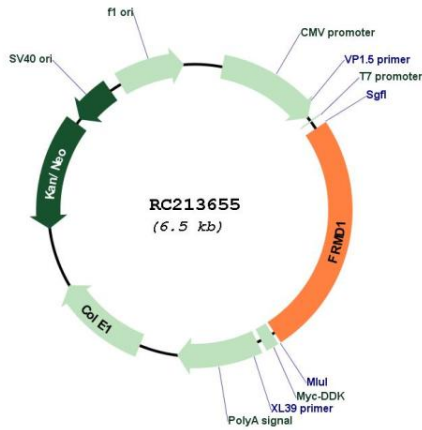
RefSeq ORF: 1650 bp

Locus ID: 79981

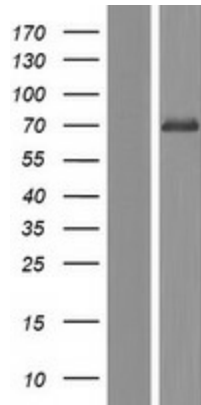
UniProt ID: [Q8N878](#)

Cytogenetics: 6q27
 MW: 62.3 kDa

Product images:



Circular map for RC213655



Western blot validation of overexpression lysate (Cat# [LY411015]) using anti-DDK antibody (Cat# [TA50011-100]). Left: Cell lysates from untransfected HEK293T cells; Right: Cell lysates from HEK293T cells transfected with RC213655 using transfection reagent MegaTran 2.0 (Cat# [TT210002]).