

## Product datasheet for **RC213653**

### Membralin (TMEM259) (NM\_001033026) Human Tagged ORF Clone

#### Product data:

Product Type:	Expression Plasmids
Product Name:	Membralin (TMEM259) (NM_001033026) Human Tagged ORF Clone
Tag:	Myc-DDK
Symbol:	Membralin
Synonyms:	ASBABP1; C19orf6; MBRL; MEMBRALIN; R32184_3
Mammalian Cell Selection:	Neomycin
Vector:	pCMV6-Entry (PS100001)
E. coli Selection:	Kanamycin (25 ug/mL)



[View online »](#)

**ORF Nucleotide Sequence:**

>RC213653 representing NM\_001033026  
 Red=Cloning site Blue=ORF Green=Tags(s)

TTTTGTAATACGACTCACTATAGGGCGGCCGGGAATTCGTCGACTGGATCCGGTACCGAGGAGATCTGCC  
 GCC**GCGATCGCC**

ATGTCGGAGCACGTGGAGCCCGCAGCTCCGGGGCCCGGGCCAAACGGCGCGCGCGCGCCCGGCCCGC  
 CGCGCGGGCTCGCACCCCAATCTCAACCCCAACCCCTCATCAACGTGCGCGACCGGCTTCCACGC  
 GCTGTTCTTCAAGATGGCTGTACCTATTCGCGGCTTCCCGCCCGCTTCCGCGCTCTCTTCGAGTTC  
 TTCGTGCTGCTCAAGGCCTGTTGTGCTCTTCGTCTGGCTACATCCACATCGTCTTCTCCGCTCGC  
 CCATCAACTGCCTGGAGCATGTGCGTGACAAGTGCCGCGTGAGGGCATCCTGCGTGTGGAAGTGCGGCA  
 CAACTCGAGCCGCGCCCGTCTTCTACAGTTCTGTGACAGCGCGCGCCGCGGGAGTTCGCGGCCGCTG  
 GCCGTGGAACAGGCAGCAACCTGGACATGGAAGATGAGGAGGAGGAAGAGCTGACCATGGAGATGTTTG  
 GGAACAGCTCCATCAAGTTTGGCTGGACATCGAGCCAAAGTGTCAAGCCGCCGAGTAGCACAGAGGC  
 CCTGAATGACAGCCAGGAGTTCCCTTCCCGAGACGCCACAAAGTGTGGCCGAGGACGAGTACATC  
 GTGGAGTACTCACTAGAGTATGGCTTCTTCGCTGTGCGAGGCCACCGCCAGCGCCTGAGCATCCCCG  
 TCATGGTGGTCAACCTGGACCCACGCGGGACAGTGCTTCGGGGACCGCTTCAGCCGCCTGCTGCTGGA  
 TGAGTTCTCGGGTACGATGACATCCTCATGTCCAGCGTGAAGGGCTGGCCGAGAACGAGGAGAACAAG  
 GGCTTCTGCGGAATGTGGTGTGCGGCGAGCACTACCGCTTTGTGAGCATGTGGATGGCGCGGACGTCT  
 ACCTGGCCGCTTCGCCATCATGGTTCATTTACGCTGAGCGTGTCCATGCTGCTGCGGACTCACACCA  
 CCAGATCTTCGTCTTTCATCGTGGACCTGCTGCAGATGCTGGAGATGAACATGGCCATCGCCTTCCCGCA  
 GCGCCCTGCTGACCGTTCATCTGGCCCTCGTGGGATGGAGGCCATCATGTCGGAGTTCTTCAACGACA  
 CCACCACCGCTTCTACATCATCTCATGTGGTGTGGTGTGGTGTGGTGTGGTGTGGTGTGGTGTGGTGT  
 CAGCACCAAGCGGCATTGGCTGCGGTTCTTCTATCTCTACCACTTCGCTTCTATGCCTATCACTAC  
 CGTTCAATGGGCAATAGCAGCCTGGCCTGGTCCACTCCTGGCTTCTCATCCAGCATTCCATGATCT  
 ACTTCTCCACCACTACGAGCTGCCTGCCATCCTGCAGCAGTCCGCATCCAGGAGATGCTGCTTACGGC  
 GCCGCACTGGGCCCCGGGACCCCAACGGCGTGCCTGATGAACAACAACCGGGCGCCCCGGCT  
 ACAGCCCTGACTCTGCCGGCAGCCCCCGCCCTGGGCCCGTCTCGCTGGGGCCAGCGGGAGTCCCG  
 GGCTGTGGCAGCGCGCCAGCTCCCTGGTGGCCGCGGAGCCTCAGTGGCAGCAGTCCCGTGGTGA  
 CCTGGGTTGGATGGCAGAGACCCTGCCATCATCACAGACGCTCCTTCTGTCCGGCTGAGCGCTCC  
 CTCTGGAGCGGCTCCAGCCAGCCGCTGGGCCCTGCTGGGGCTCCCCACGCCCCAGGACAGTG  
 TCCCCCGAGTACTCCGAGCTTCTGACACAACCTCCCTGGGGCTGCGGTAGGCGGGCTAGCCCGGC  
 CTCATGGCCCCAACGGAGGCGCCCTCGGAGGTGGGGTCC

**ACGCGT**ACGCGGCCGCTCGAGCAGAACTCATCTCAGAAGAGGATCTGGCAGCAATGATATCCTGGATT  
 ACAAGGATGACGACGATAAGGTTAA

**Protein Sequence:**

>RC213653 representing NM\_001033026  
 Red=Cloning site Green=Tags(s)

MSEHVEPAAPGPGPNGGGGPAPARGPRTPLNPNPLINVRDLFHALFFKMAVYSRFLFPPAFRRLFEF  
 FVLLKALFVLFVLAYIHIVFSRSPINCLEHVRDKWPREGILRVEVRHNSRAPVFLQFCDSGGRGSFPGL  
 AVEPGSNLMEDEEEELTMEMFGNSSIKFELDIEPKVFKPPSSTEALNDSQEFPPPETPTKVWPQDEYI  
 VEYSLEYGFLRLSQATRQRLSIPVMVTLDPTRDQCFGDRFSRLLLDLFLGYDDILMSSVKGLAENEENK  
 GFLRNVVSGEHYRFVSMWMARTSYLAFAIMVIFTLVSMMLLRYSHHQIFVFIVDLLQMLEMMAIAFPA  
 APLLTVILALVGMSEIFNDTTAFYIILIVWLADQYDAICHTSTSKRHWLRFYLYHFAFYAYHY  
 RFNGQYSSLALVTSWLFIQHSMIYFFHHYELPAILQQVRIQEMLLQAPPLGPTALPDMNNSGAPA  
 TAPDSAGQPPALGPVSPGASGSPGVAAAAPSSLVAAAASVAAAAGGDLGWAETAIIITDASFLSGLSAS  
 LLERRPASPLGPAGGLPHAPQDSVPPSDSAASDTTPLGAAVGGPSPASMAPTEAPSEVGS

**TR**TRPLEQKLISEEDLAANDILDYKDDDDKV

**Chromatograms:** [https://cdn.origene.com/chromatograms/mk8070\\_a11.zip](https://cdn.origene.com/chromatograms/mk8070_a11.zip)

**Restriction Sites:** SgfI-MluI

**Cloning Scheme:**



**ACCN:** NM\_001033026

**ORF Size:** 1860 bp

**OTI Disclaimer:** The molecular sequence of this clone aligns with the gene accession number as a point of reference only. However, individual transcript sequences of the same gene can differ through naturally occurring variations (e.g. polymorphisms), each with its own valid existence. This clone is substantially in agreement with the reference, but a complete review of all prevailing variants is recommended prior to use. [More info](#)

**OTI Annotation:** This clone was engineered to express the complete ORF with an expression tag. Expression varies depending on the nature of the gene.

**Components:** The ORF clone is ion-exchange column purified and shipped in a 2D barcoded Matrix tube containing 10ug of transfection-ready, dried plasmid DNA (reconstitute with 100 ul of water).

**Reconstitution Method:**

1. Centrifuge at 5,000xg for 5min.
2. Carefully open the tube and add 100ul of sterile water to dissolve the DNA.
3. Close the tube and incubate for 10 minutes at room temperature.
4. Briefly vortex the tube and then do a quick spin (less than 5000xg) to concentrate the liquid at the bottom.
5. Store the suspended plasmid at -20°C. The DNA is stable for at least one year from date of shipping when stored at -20°C.

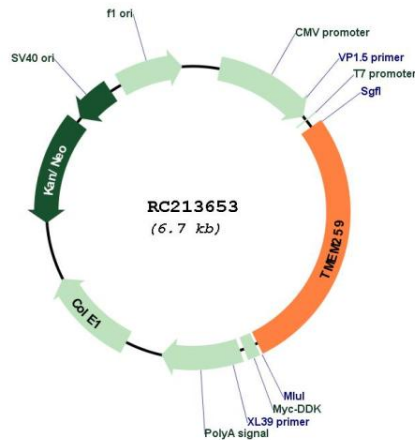
**RefSeq:** [NM\\_001033026.2](#)

**RefSeq Size:** 2754 bp

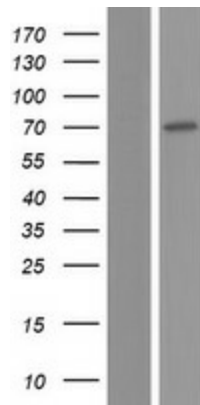
**RefSeq ORF:** 1863 bp

**Locus ID:** 91304  
**UniProt ID:** [Q4ZIN3](#)  
**Cytogenetics:** 19p13.3  
**Protein Families:** Transmembrane  
**MW:** 67.7 kDa  
**Gene Summary:** May have a role in the ERAD pathway required for clearance of misfolded proteins in the endoplasmic reticulum (ER). Promotes survival of motor neurons, probably by protecting against ER stress.[UniProtKB/Swiss-Prot Function]

### Product images:



Circular map for RC213653



Western blot validation of overexpression lysate (Cat# [LY422343]) using anti-DDK antibody (Cat# [TA50011-100]). Left: Cell lysates from untransfected HEK293T cells; Right: Cell lysates from HEK293T cells transfected with RC213653 using transfection reagent MegaTran 2.0 (Cat# [TT210002]).