

Product datasheet for **RC213652**

Epsin 2 (EPN2) (NM_014964) Human Tagged ORF Clone

Product data:

Product Type:	Expression Plasmids
Product Name:	Epsin 2 (EPN2) (NM_014964) Human Tagged ORF Clone
Tag:	Myc-DDK
Symbol:	Epsin 2
Synonyms:	EHB21
Mammalian Cell Selection:	Neomycin
Vector:	pCMV6-Entry (PS100001)
E. coli Selection:	Kanamycin (25 ug/mL)



[View online »](#)

ORF Nucleotide
Sequence:

>RC213652 representing NM_014964
Red=Cloning site Blue=ORF Green=Tags(s)

TTTTGTAATACGACTCACTATAGGGCGGCCGGGAATTCGTCGACTGGATCCGGTACCGAGGAGATCTGCC
GCC**GCGATCGCC**

ATGACGACTTCGTCTATCAGACGGCAGATGAAAAACATCGTGAACAATTACTCAGAGGCAGAAATCAAAG
TCCGGGAAGCCACCTCCAATGACCCGTGGGGCCCGTCCAGTTCTCTGATGACCGAGATTGCCGACCTGAC
CTACAACGTGGTGGCCTTCTCGGAGATCATGAGCATGGTGTGGAAGCGGCTGAATGACCATGGCAAGAAC
TGGCGGCATGTGTACAAGGCGCTGACCTGCTGGACTACCTCATCAAGACAGGCTCCGAACGTGTGGCC
AGCAGTGCCGGGAGAACATCTTCGCCATCCAGACCCCTGAAGGACTTCCAGTACATTGACCGAGATGGCAA
GGACCAGGGCATCAATGTGCGTGAGAAGTCAAAGCAACTGGTGGCTCTCCTCAAGGACGAGGAACGGTTG
AAGGCTGAGAGGGCCAGGCTCTCAAACCAAAGAGCGCATGGCCAGGTTGCCACTGGCATGGGCAGCA
ACCAGATCACCTTTGGGCGAGGCTCCAGCCAGCCCAACCTCTCCACCAGCCACTCGGAGCAGGAGTATGG
CAAGGCCGGGGCTCCCGGCCCTCTACCATGGCTCGCCTGAGGCCTCGTGTGCCCCCAGCACCCGCACA
GGGGCCCCGCTGGGTGAGAGTGAGGAGCTGCAGCCACTGAGCCAGCGCCACCCCTTCTGCCGCACCTGG
GGCTGGCCTCCCGCCCAATGGCGACTGGTCCCAGCCCTGCCTCACTTGTGACCGCGCAGCCCGAGCCAC
CTCCCCGCGAGTGTCTCCGAGCTGGAGCAAGCCCGGCCCCAGACTAGTGGAAGAAGAGGAGCTTCAGCTG
CAGCTGGCACTTGCCATGAGCAGAGAAGTGGCTGAGCAGGAAGAAGCGCTCAGGCGGGGTGATGACCTCA
GATTACAGATGGCCCTGGAAGAAAGCCGAAGGGACACAGTTAAAATTCCAAAAAGAAAGAGCATGGCTC
TCTCCACAGCAGACTACGCTGTTGGATTTAATGGATGCTCTCCCGAGCTCGGGCCCCGGGCCAGAAA
GCAGAGCCCTGGGGCCCGTCAAGCTCCACTAACAGACCAACCCCTGGGGCGGGCCAGCGGCTCCTGCGA
GTACTTCAGACCCCTGGCCATCGTTTGGTACCAAGCCAGCTGCCTCCATTGACCCATGGGGGTGCCCCAC
TGGAGCCACCGCACAATCTGTCCCAAGAAGCTCGGACCCCTGGGCAGTTTACAGCAGCCTGCCTCCAGT
GCTGGGAAAAGAGCTTCTGACGCGTGGGGCGCAGTCTCCACCACCAAGCCCGTGTCTGTCTCTGGGTCT
TTGAGCTCTTCAGTAATCTGAATGGTACAATTAAGATGACTTTTCTGAATTTGACAACCTTCGGACTTC
AAAAAAAACAGCCGAATCTGTGACCTCTCTGCCATCCCAAAACAATGGAAGTACCAGCCCTGACCCCTTT
GAGTCTCAACCCCTGACTGTGCGCTCAAGCAAGCCAGCAGTGGCCGAAAACACCTGAGTCCTTCTGG
GCCCAACGCGGCCCTGGTGAACCTGGACTCACTGGTGACCAGGCTGCCCCACCAGCCAGTCCCTCAA
CCCTTCTCTGGCACCAGGTGCTCCGCCACCTCGGCCCTGTTAACCTTTCCAGGTGAACCAGCCCCAG
CCGCTGACACTGAACCAGCTTCGGGGGAGCCAGTCTGGGGACCAGCACATCCTTTGGGCTGGCCAG
GAGTGGAGTCCATGGCTGTGGCTCGATGACCTCCGCGGCCCCACAGCCAGCTCTGGGGGCCACTGGTTC
CTCTCTGACACCACTGGGCCCTGCAATGATGAACATGGTGGGCAGTGTGGGTATACCCCATCAGCAGCC
CAGGCCACTGGCACAACCAACCTTTCTTCTC

AG**GACCCG**ACGCGTACGCGGCCGCTCGAGCAGAAACTCATCTCAGAAGAGGATCTGGCAGCAAATGATATCC
TGGATTACAAGGATGACGACGATAAGGTTTAA

Protein Sequence: >RC213652 representing NM_014964
Red=Cloning site Green=Tags(s)

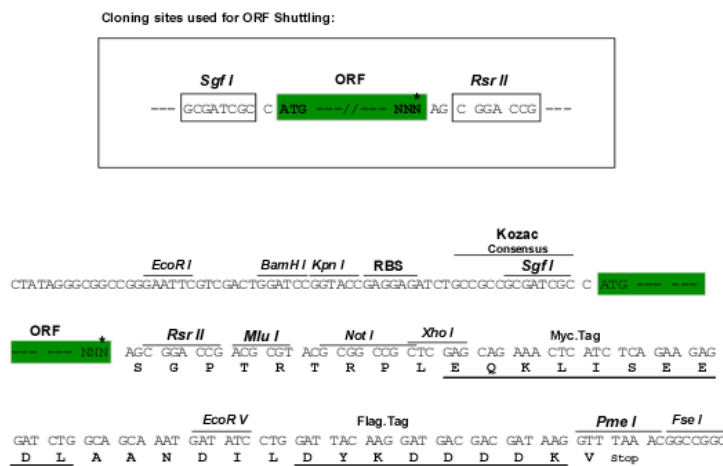
MTTSSIRRQMKNI VNNYSEAEIKVREATSNDPWGPSSSLMTEIADLTYNVVFSEIMSMVWKR LNDHGKN
 WRHVKYKAL TLLDYL IKTGSERVAQQCRENIFA IQTLKDFQYIDRDGKDQGINVREKSKQLVALLKDEERL
 KAERAQALKTKERMAQVATGMGSNQITFGRGSSQPNLSTSHSEQEYKGAGGSPASYHGSPEASLCPQHRT
 GAPLGGSEELQPLSQRHPFLPHLGLASRPNGDWSQPCL TCDRAARATSPRVSSSELEQARPQTSGEELQL
 QLALAMSREVAEQEERLRRGDDLRLQMALEESRRDTVKIPKKEHGSLPQQTLLDLMDALPSSGPAQK
 AEPWGPASTNQTNPWGGAAPASTSDPWPSFGTKPAASIDPWGVPTGATAQSVKNSDPWAASQQPASS
 AGKRASDAWGA VSTTKPVSVSGSFELF SNLNGTIKDDFSEFDNLR TSKKTAESV TSLPSQNNGTSPDPF
 ESQPLTVASSKPSSARKTPESFLGPNAALVNLDSL VTRPAPPAQSLNPF LAPGAPATSAPVNP FQVNQPQ
 PLTLNQLRGPVLGTSTSFPGPGVESMAVASMTSAAPQALGATGSSL TPLGPAMNMVGSVGI PPSAA
 QATGTTNPFL

SGPTRTRRLEQKLISEEDLAANDILDYKDDDDKV

Restriction Sites:

SgfI-RsrII

Cloning Scheme:



ACCN: NM_014964

ORF Size: 1923 bp

OTI Disclaimer: The molecular sequence of this clone aligns with the gene accession number as a point of reference only. However, individual transcript sequences of the same gene can differ through naturally occurring variations (e.g. polymorphisms), each with its own valid existence. This clone is substantially in agreement with the reference, but a complete review of all prevailing variants is recommended prior to use. [More info](#)

OTI Annotation: This clone was engineered to express the complete ORF with an expression tag. Expression varies depending on the nature of the gene.

Components: The ORF clone is ion-exchange column purified and shipped in a 2D barcoded Matrix tube containing 10ug of transfection-ready, dried plasmid DNA (reconstitute with 100 ul of water).

Reconstitution Method:

1. Centrifuge at 5,000xg for 5min.
2. Carefully open the tube and add 100ul of sterile water to dissolve the DNA.
3. Close the tube and incubate for 10 minutes at room temperature.
4. Briefly vortex the tube and then do a quick spin (less than 5000xg) to concentrate the liquid at the bottom.
5. Store the suspended plasmid at -20°C. The DNA is stable for at least one year from date of shipping when stored at -20°C.

RefSeq: [NM_014964.3](#), [NP_055779.1](#)

RefSeq Size: 4814 bp

RefSeq ORF: 1926 bp

Locus ID: 22905

UniProt ID: [O95208](#)

Cytogenetics: 17p11.2

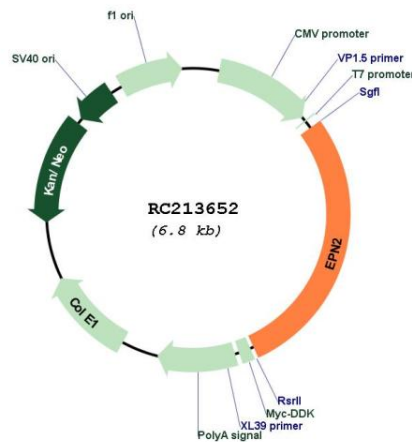
Domains: ENTH, UIM

Protein Pathways: Endocytosis

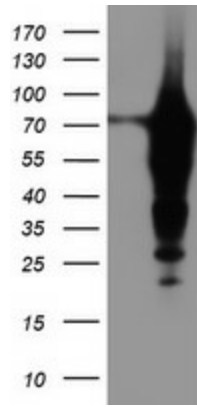
MW: 68.3 kDa

Gene Summary: This gene encodes a protein which interacts with clathrin and adaptor-related protein complex 2, alpha 1 subunit. The protein is found in a brain-derived clathrin-coated vesicle fraction and localizes to the peri-Golgi region and the cell periphery. The protein is thought to be involved in clathrin-mediated endocytosis. Alternate splicing of this gene results in multiple transcript variants encoding different isoforms. [provided by RefSeq, Jul 2008]

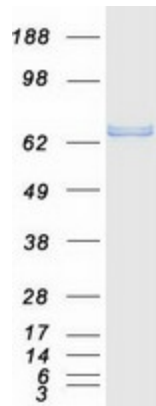
Product images:



Circular map for RC213652



HEK293T cells were transfected with the pCMV6-ENTRY control (Cat# [PS100001], Left lane) or pCMV6-ENTRY EPN2 (Cat# RC213652, Right lane) cDNA for 48 hrs and lysed. Equivalent amounts of cell lysates (5 ug per lane) were separated by SDS-PAGE and immunoblotted with anti-EPN2(Cat# [TA504297]).



Coomassie blue staining of purified EPN2 protein (Cat# [TP313652]). The protein was produced from HEK293T cells transfected with EPN2 cDNA clone (Cat# RC213652) using MegaTran 2.0 (Cat# [TT210002]).