

Product datasheet for RC213644

SARA (ZFYVE9) (NM_007324) Human Tagged ORF Clone

Product data:

Product Type: Expression Plasmids
Product Name: SARA (ZFYVE9) (NM_007324) Human Tagged ORF Clone
Tag: Myc-DDK
Symbol: ZFYVE9
Synonyms: MADHIP; NSP; PPP1R173; SARA; SMADIP
Vector: pCMV6-Entry (PS100001)
E. coli Selection: Kanamycin (25 ug/mL)
Cell Selection: Neomycin
ORF Nucleotide Sequence: >RC213644 representing NM_007324
 Red=Cloning site Blue=ORF Green=Tags(s)

TTTTGTAATACGACTCACTATAGGGCGGCCGGAATTCGTCGACTGGATCCGGTACCGAGGAGATCTGCC
 GCCGCGATCGCC

ATGGAGAATTACTCCAAGCAGAAGCTTACAACCTGGACAAGGTGTTAGATGAATTTGAACAAAACGAAG
 ATGAAACAGTTTCTTCTACTTTATTGGATACAAAGTGAATAAGATTCTAGATCCCCCTTCTCACC GGCT
 GTCATTTAACCTACTTTGGCCAGTGTGAATGAATCTGCAGTTTCTAATGAGTCACAACCACAACCTGAAA
 GTCTTCTCCCTGGCTCATT CAGCTCCCCTGACCACAGAGGAAGAGGATCACTGTGCTAATGGACAGGACT
 GTAATCTAAATCCAGAGATTGCCACAATGTGGATTGATGAAAATGCTGTTGCAGAAGACCAGTTAATTA
 GAGAACTATAGTTGGGATGATCAATGCAGTGTGTTGAAGTGGGAGAGAAGAAATGTGGAAACCTGGCT
 TGTCTGCCAGATGAGAAGAATGTTCTTGTGTAGCCGTCATGCATAACTGTGATAAAAGGACATTACAAA
 ACGATTTACAGGATTGTAATAATTATAATAGTCAATCCCTTATGGATGCTTTTAGCTGTTCACTGGATA
 TGAAAACAGACAAACTGATCAATTTAGTTTTAGTATAAATGAGTCCACTGAAAAAGATATGAATTCAGAG
 AAACAAATGGATCCATTGAATAGACCGAAAACAGAGGGGAGATCTGTTAACCATCTGTGCTACTTTCAT
 CTGATAGTCTAGCCAGTGTCTGTTCCCCTTACAATTAAGGATGACGGAAGTATAGGTAGAGACCCCTC
 CATGTCTGCGATTACAAGTTAACGGTTGATT CAGTAATCTCATCCAGGGAACAGATGGATGTCCTGCT
 GTTAAAAAGCAAGAGAACTATATACCAGATGAGGACCTCACTGGCAAAATCAGCTCTCCTAGGACAGATC
 TAGGGAGTCCAAATTCCTTTTCCACATGAGTGAGGGGATTTTGTGAAAAAAGAGCCAGCAGAGGAGAG
 CACCAGTGAAGAATCCCTCCGGTCTGGTTACCTTTGCTTCTCAAACCAGACATGCCTAATGGGTCTGGA
 AGGAATAATGACTGTGAACGGTGTTCAGATTGCCTTGTGCCTAATGAAGTTAGGGCTGATGAAAATGAAG
 GTTATGAACATGAAGAACTCTGGCACTACAGAATTCCTAATATGACAGAGCATTCTCTGAATCTCA
 GGACATGACTAATTGGAAGTTGACTAACTAAATGAGATGAATGATAGCCAAGTAAACGAAGAAAAGGAA
 AAGTTTCTACAGATTAGTCAGCCTGAGGACACTAATGGTGATAGTGGAGGACAGTGTGTTGGATTGGCAG
 ATGCAGGTCTAGATTTAAAAGGAACTTGCAATAGTGAAAGTGAAGAATGTGATTTCTCCACTGTTATAGA
 CACACCAGCAGCAAATTATCTATCTAATGGTTGTGATTCTATGGAATGCAAGACCCAGGTGTTCTTTT
 GTTCCAAGACTTTACCTCCAAGAAGATT CAGTAACAGAAGAAAAAGAAATAGAGGAAAGCAAGTCAG



[View online >](#)

AATGCTACTCAAATATTTATGAACAGAGAGGAAATGAGGCCACAGAAGGGAGTGGACTACTTTTAAACAG
CACTGGTGACCTAATGAAGAAAAATTTTACATAAATTTCTGTAGTCAAGTTCCATCAGTGCTTGGGCAA
TCTTCCCCAAGGTAGTAGCAAGCCTGCCATCTATCAGTGTTCTTTTGGTGGTGAAGACCCAAGCAAC
CTTCTAATCTTAACTTCAAATTCAAAGCCATTATCAGACCATTACAAAATGACTTTCCTGCAAAACAG
TGGAAATAACTAAAAATAAAATGATATTCTGGGAAAGCAAATAGGGGAAAACCTCAGCAACCAAT
GTATGCAGTCCATCTTTGGGAAACATCTCTAATGTCGATACAAAATGGGGAACATTTAGAAAGTTATGAGG
CTGAGATCTCCACTAGACCATGCCTTGCCATTAGCTCCAGATAGCCAGATAATGATCTCAGAGCTGGTCA
GTTTGGAAATTTCTGCCAGAAAGCCATTACCACCTCTGGGTGAGGTGGCTCCAGTATGGGTACCGGATTCT
CAGGCTCCAAATTGCATGAAATGTGAAGCCAGGTTTACATTACCAAAAAGGAGGCATCACTGCAGAGCAT
GTGGGAAGGTTTTCTGTGCTTCTGCTGTAGCCTGAAATGTAACTGTTATACATGGACAGAAAGGAAGC
TAGAGTGTGTGAATCTGCCATTCAGTGCTAATGAATGTGGCTCAGCCCAGAGAGCAGAGGCGAGTTTGG
TTTGCTGATGGGATCTTGCCCAATGGAGAAGTTGCTGATGCAGCCAAATTAACAATGAATGGAATCTCT
CTGCAGGAACCTGGCTGTGTACACGACCCAGTCAAGCCAGTAACTACCAGTCTCTACCAGCAGAGAC
GGATATTTGTCTATTCTCTGGGAGTAACTCAGGTTGGAAGTCTGTTGGAAGTGAATGAATCTTATT
CCTGAAGATGGCCTTCTCCATTCTCATCTCCACTGGTGTAAAAGGAGACTATGCTGTGGAAGAGAAAAC
CATCACAGATTTAGTAATGCAGCAGTTGGAGGATGGTGGCCCTGACCCACTTGTATTTGTTTTAAATGC
AAATTTGTGTCAATGGTTAAAATTGTAATATGTGAACAGGAAGTGGTGGTGTTCACAACCAAGGGA
ATGCATGCAGTGGGTGAGTCTGAGATAGTCACTTCTACAGTGTTTACCGGATGAAAAGTGTGGCCAA
AGGATATCTTAACTACTTTGTGCAGCTTATCGGGATGCTCTGGCAGGGAATGGTGGAGCAACTTGGG
ACATTCCTTCTTCAAGTAAAGTTTCTTGGCAGTAAAGAACATGGTGGATCTTATATGTGACATCTACC
TACCAGTCACTGCAAGACCTAGTACTCCAACCCACCTACTTGTGGGATTCTTATCCAGAAATGGG
AAACTCCTTGGGCTAAAGTATTTCTATCCGCTGATGTTGAGACTTGGAGCTGAATATCGACTTTATCC
ATGCCACTATTCAGTGTGAGATTCGGAAGCCATTGTTGGAGAGACGGGGCATACCATCATGAATCTT
CTTGACAGACTTCAGAAATTACCAGTATACCTTGCCAGTAGTTCAAGGTTTGGTGGTTGATATGGAAGTTC
GGAAAACCTAGCATCAAAATCCCAGCAACAGATACAATGAGATGATGAAAGCCATGAACAAGTCCAATGA
GCATGTCTGGCAGGAGGTGCCTGCTTCAATGAAAAGGCAGACTCTCATCTTGTGTGTACAGAATGAT
GATGGAACCTATCAGACCCAGGCTATCAGTATTCACAATCAGCCCAGAAAAGTACTGGTGGCAGTTTCT
TTGTGTTCAAGTGGCGCTCTGAAATCCTCTTCTGGATACCTTGCCAAGTCCAGTATTGTGGAAGATGGTGT
TATGGTCCAGATTACTGCAGAGAACATGGATTCCTTGAGGCAGGCACTGCGAGAGATGAAGGACTTCACC
ATCACCTGTGGGAAGGCGGACGCGGAGGAACCCAGGAGCACATCCACATCCAGTGGTGGATGATGACA
AGAACGTTAGCAAGGGTGTGTAAGTCTATAGATGGGAAGTCCATGGAGACTATAACAATGTGAAGAT
ATCCATGGATCAGAATAAAGCAAATGGAAAAGTAATCAGATGGACAGAGGTGTTTTCTAGAAAAC
GATGACCAGCACAAATGCCTCAGTGATCCTGCAGATCACAGTAGATTGACTGAGCATGTTGCCAAAGCTT
TTTGCCTTGTCTCTGTCTCACCTGAACTTCTGAAGGAAGTGGAAATGACAAAACCTGGGACTACGTGT
GACACTTGACTCAGATCAGGTTGGCTATCAAGCAGGGAGCAATGGCCAGCCCTTCCCTCGCAGTACATG
AATGATCTGGACAGCGCCTTGGTGCCGGTATCCATGGAGGGCCTGCCAGCTTAGTGAGGGCCCCGTTG
TCATGGAACCTCATCTTTATATTCTGAAAACATCGTA

ACGCGTACGCGGCCGCTCGAGCAGAACTCATCTCAGAAGAGGATCTGGCAGCAAATGATATCCTGGATT
ACAAGGATGACGACGATAAGGTTTAA

Protein Sequence: >RC213644 representing NM_007324
 Red=Cloning site Green=Tags(s)

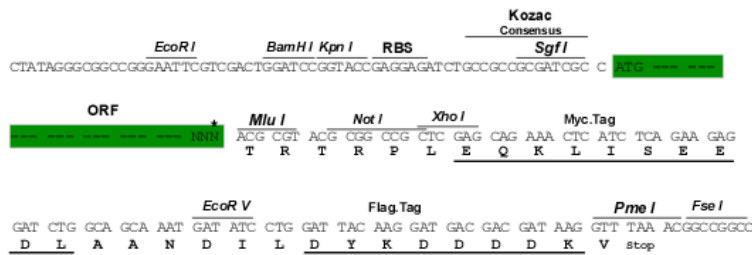
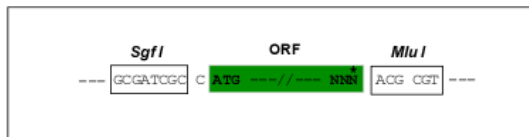
MENYFQAEAYNLDKVLDEFEQNEDETVSSTLLDTKWNKILDPPSHRLSFNPTLASVNESAVSNESQPQLK
 VFSLAHSAPL TTEEDHCANGQDCNLNPEIATMWIDENAVAEDQLIKRNYSWDDQCSAVEVGEKKCGNLA
 CLPDEKNVLVVAVMHNC DKRTLQNDLQDCNNYNSQSLMDAFSCSLDNENRQTDQF SFSINESTEKMNSE
 VKKQENYIPDEDLTGKISSPRTL GSPNSFSHMSEGILMKKEPAEESTTEESLRSGLPLLLKPDMPNGSG
 RNNDCERCSDCLVPNEVRADENEGYEHEETLGTTEFLNMTTEHSESQDMTNWKLTKLNEMNDSQVNEEKE
 KFLQISQPEDTNGDSGGQCVGLADAGLDLKGTCISEEECDFSTVIDTPAANYLSNGCDSYGMQDPGVSF
 VPKTLPSKEDSVTEEKEIEESKSECYSNIYEQRGNEATEGSGLLLNSTGDLMKKNYLHNFCSQVPSVLGQ
 SSPKVVASLPSISVPPFGGARPQPSNLKLIQPKPLSDHLQNDFPANSGNNTKNKNDILGKAKLGENSATN
 VCSPLGNISNVDNNGEHELESYAEISTRPCALAPDSPDNDLRAGQFGISARKPFTTLGEVAPVWVPDS
 QAPNCMKCEARFTFKRRHHCRACGKVFCASSCSLKCKLLYMDRKEARVCVICHSVLMNVAQPREQRRVW
 FADGILPNGEVADA AKLTMNGTSSAGTLAVSHDPVKPVTTSP LPAETDICLFGSITQVGSFVGSAMNLI
 PEDGLPPIILISTGVKGDYAVEEKPSQISVMQQL EDGGPDPLVFLNANLLSMVKIVNYVNRKCWCFTTKG
 MHAVGQSEIVILLQCLPDEKCLPKDIFNHVQLYRDALAGNVSNLGHSSFQSFLGSKEHGGFLYVTST
 YQSLQDLVLPPTPYLFGILIQKWETPWAKVFI RIRLMLRLGAEYRLYPCPLFSVRFKPLFGETGHTIMNL
 LADFRNYQYTLVVQGLVVDMEVRKTSIKIPSNRYNEMMKAMNKSNEHVLGAGACFNEKADSHLVCVQND
 DGNYQTQAISIHNPQPRKVTGASFFVFSGALKSSSYGLAKSSIVEDGVMVQITAENMDSL RQALREMKDFT
 ITCGKADAEEPQEHIIHQWVDDDKNVSKGVVSPIDGKSMETITNVKIFHGSEYKANGKVI RWTEVFFLEN
 DDQHNC LSDPADHSRLTEHVAKAFCLALCPHLKLLKEDGMTKLGRLVTLDSQVGYQAGSNGQPLPSQYM
 ND LDSALVPVIHGGACQLSEGPVVMELIFYILENIV

TRTRPLEQKLISEEDLAANDILDYKDDDDKV

Restriction Sites:
 Cloning Scheme:

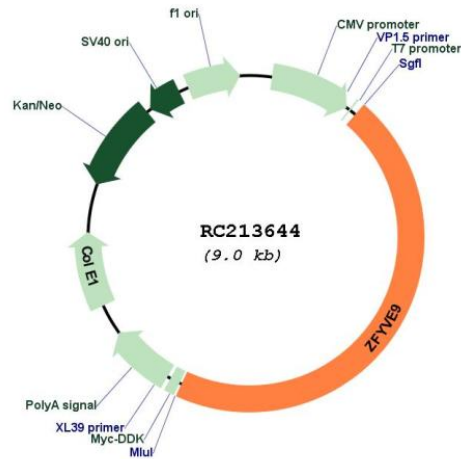
Sgfl-MluI

Cloning sites used for ORF Shuttling:



* The last codon before the Stop codon of the ORF

Plasmid Map:



ACCN: NM_007324

ORF Size: 4098 bp

OTI Disclaimer: The molecular sequence of this clone aligns with the gene accession number as a point of reference only. However, individual transcript sequences of the same gene can differ through naturally occurring variations (e.g. polymorphisms), each with its own valid existence. This clone is substantially in agreement with the reference, but a complete review of all prevailing variants is recommended prior to use. [More info](#)

OTI Annotation: This clone was engineered to express the complete ORF with an expression tag. Expression varies depending on the nature of the gene.

Components: The ORF clone is ion-exchange column purified and shipped in a 2D barcoded Matrix tube containing 10ug of transfection-ready, dried plasmid DNA (reconstitute with 100 ul of water).

Reconstitution Method:

1. Centrifuge at 5,000xg for 5min.
2. Carefully open the tube and add 100ul of sterile water to dissolve the DNA.
3. Close the tube and incubate for 10 minutes at room temperature.
4. Briefly vortex the tube and then do a quick spin (less than 5000xg) to concentrate the liquid at the bottom.
5. Store the suspended plasmid at -20°C. The DNA is stable for at least one year from date of shipping when stored at -20°C.

RefSeq: [NM_007324.4](#)

RefSeq Size: 4753 bp

RefSeq ORF: 4101 bp

Locus ID: 9372

UniProt ID: [O95405](#)

Cytogenetics: 1p32.3

Domains:	FYVE
Protein Pathways:	TGF-beta signaling pathway
MW:	150.2 kDa
Gene Summary:	This gene encodes a double zinc finger motif-containing protein that participates in the transforming growth factor-beta (TGFB) signalling pathway. The encoded protein interacts directly with SMAD2 and SMAD3, and recruits SMAD2 to the TGFB receptor. There are multiple pseudogenes for this gene on chromosomes 2, 15, and X. Alternative splicing results in multiple transcript variants. [provided by RefSeq, Mar 2013]