

Product datasheet for RC213639

WNT3A (NM_033131) Human Tagged ORF Clone

Product data:

Product Type:	Expression Plasmids
Product Name:	WNT3A (NM_033131) Human Tagged ORF Clone
Tag:	Myc-DDK
Symbol:	WNT3A
Mammalian Cell Selection:	Neomycin
Vector:	pCMV6-Entry (PS100001)
E. coli Selection:	Kanamycin (25 ug/mL)
ORF Nucleotide Sequence:	>RC213639 representing NM_033131 Red=Cloning site Blue=ORF Green=Tags(s)

TTTTGTAATACGACTCACTATAGGGCGGCCGGAATTCGTCGACTGGATCCGGTACCGAGGAGATCTGCC
GCC**CGATCGCC**

ATGGCCCCACTCGGATACTTCTACTCCTCTGCAGCCTGAAGCAGGCTCTGGCAGCTACCCGATCTGGT
GGTCGCTGGCTGTTGGGCCACAGTATTCCTCCCTGGGCTCGCAGCCATCCTGTGTGCCAGCATCCCGGG
CCTGGTCCCCAAGCAGCTCCGCTTCTGCAGGAACACGTGGAGATCATGCCAGCGTGGCCGAGGGCATC
AAGATTGGCATCCAGGAGTGCCAGCACCAGTCCGCGGCCGCGGTGGAACCTGCACCACCGTCCACGACA
GCCTGGCCATCTTCGGGCCGCTGGACAAAGCTACCAGGGAGTCGGCCTTTGTCCAGCCATTTGCCTC
AGCCGGTGTGGCCTTTGCAGTGACACGCTCATGTGCAGAAGGCACGGCCGATCTGTGGCTGCAGCAGC
CGCCACCAGGGCTCACCAGGCAAGGGCTGGAAGTGGGGTGGCTGTAGCGAGGACATCGAGTTTGGTGGGA
TGGTGTCTCGGGAGTTCGCCGACGCCGGGAGAACCGGCCAGATGCCCGCTCAGCCATGAACCGCCACAA
CAACGAGGCTGGGCGCCAGGCCATCGCCAGCCACATGCACCTCAAGTGAAGTGCACGGGCTGTCCGGC
AGCTGCGAGGTGAAGACATGCTGGTGGTGCACCCGACTTCCGCGCCATCGGTGACTTCTCAAGGACA
AGTACGACAGCGCTCGGAGATGGTGGTGGAGAAGCACCAGGAGTCCCGCGGCTGGTGGAGACCCTGCG
GCCGCGCTACACCTACTCAAGGTGCCACGGAGCGGACCTGGTCTACTACGAGGCTCGCCCACTTC
TGCAGCCCAACCCTGAGACGGGCTCCTTCGGCACGCGGACCGCACCTGCAACGTGAGCTGCACGGCA
TCGACGGCTGCGACCTGCTGTGCTGCGGCCGCGCCACAACGCGGAGCGGAGCGCGCCGGGAGAGTG
CCGCTGCGTGTCCACTGGTGTGCTACGTGAGCTGCCAGGAGTGACAGCGGCTACTACGAGTGCACACC
TGCAAG

ACGCGTACGCGGCCGCTCGAGCAGAACTCATCTCAGAAGAGGATCTGGCAGCAAATGATATCCTGGATT
ACAAGGATGACGACGATAAGGTTTAA



[View online »](#)

Protein Sequence: >RC213639 representing NM_033131
Red=Cloning site Green=Tags(s)

MAPLGYFLLLCSLKQALGSYPIWWSLAVGPQYSSLGSPILCASIPGLVPKQLRFCRNYVEIMPSVAEGI
 KIGIQECQHQFRGRRWNCCTTVHDSLAIIFGPVLDKATRESAFVHAIASAGVAFVTRSCAEGTAAICGSS
 RHQSGPGKGWKWGGCSEDIIEFGGMVSREFADARENRPDARSAMNRHNNEAGRQAIASHMHLKCKCHGLSG
 SCEVKTWWSQPDFRAIGDFLKDKYDSASEMVVEKHRESRGWVETLRPRYTYFKVPTERDLVYYEASPNF
 CEPNPETGSFGTRDRTCNVSSHGIDGCDLLCCGRGHNARAERRREKRCRCVFHWCCYVSCQECTRVYDVHT
 CK

TRTRPLEQKLISEEDLAANDILDYKDDDDKV

Chromatograms: https://cdn.origene.com/chromatograms/mg2619_b02.zip

Restriction Sites: Sgfl-MluI

Cloning Scheme:

Cloning sites used for ORF Shuttling:



* The last codon before the Stop codon of the ORF

ACCN: NM_033131

ORF Size: 1056 bp

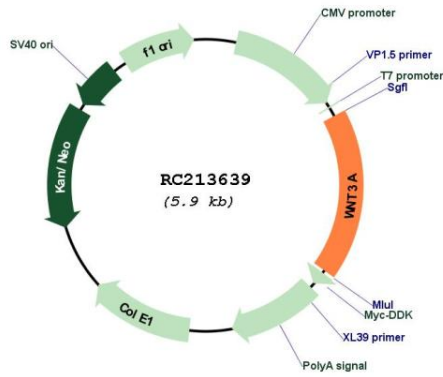
OTI Disclaimer: The molecular sequence of this clone aligns with the gene accession number as a point of reference only. However, individual transcript sequences of the same gene can differ through naturally occurring variations (e.g. polymorphisms), each with its own valid existence. This clone is substantially in agreement with the reference, but a complete review of all prevailing variants is recommended prior to use. [More info](#)

OTI Annotation: This clone was engineered to express the complete ORF with an expression tag. Expression varies depending on the nature of the gene.

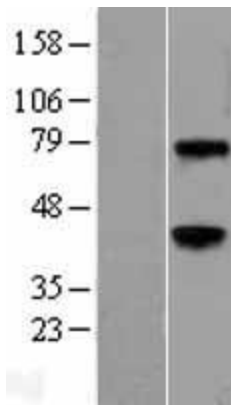
Components: The ORF clone is ion-exchange column purified and shipped in a 2D barcoded Matrix tube containing 10ug of transfection-ready, dried plasmid DNA (reconstitute with 100 ul of water).

Reconstitution Method:	<ol style="list-style-type: none">1. Centrifuge at 5,000xg for 5min.2. Carefully open the tube and add 100ul of sterile water to dissolve the DNA.3. Close the tube and incubate for 10 minutes at room temperature.4. Briefly vortex the tube and then do a quick spin (less than 5000xg) to concentrate the liquid at the bottom.5. Store the suspended plasmid at -20°C. The DNA is stable for at least one year from date of shipping when stored at -20°C.
Note:	Plasmids are not sterile. For experiments where strict sterility is required, filtration with 0.22um filter is required.
RefSeq:	NM_033131.4
RefSeq Size:	2932 bp
RefSeq ORF:	1059 bp
Locus ID:	89780
UniProt ID:	P56704
Cytogenetics:	1q42.13
Protein Families:	Adult stem cells, Cancer stem cells, Druggable Genome, ES Cell Differentiation/IPS, Induced pluripotent stem cells, Secreted Protein, Stem cell relevant signaling - Wnt Signaling pathway
Protein Pathways:	Basal cell carcinoma, Hedgehog signaling pathway, Melanogenesis, Pathways in cancer, Wnt signaling pathway
MW:	39.2 kDa
Gene Summary:	<p>The WNT gene family consists of structurally related genes which encode secreted signaling proteins. These proteins have been implicated in oncogenesis and in several developmental processes, including regulation of cell fate and patterning during embryogenesis. This gene is a member of the WNT gene family. It encodes a protein which shows 96% amino acid identity to mouse Wnt3A protein, and 84% to human WNT3 protein, another WNT gene product. This gene is clustered with WNT14 gene, another family member, in chromosome 1q42 region. [provided by RefSeq, Jul 2008]</p>

Product images:



Circular map for RC213639



Western blot validation of overexpression lysate (Cat# [LY403226]) using anti-DDK antibody (Cat# [TA50011-100]). Left: Cell lysates from untransfected HEK293T cells; Right: Cell lysates from HEK293T cells transfected with RC213639 using transfection reagent MegaTran 2.0 (Cat# [TT210002]).