

Product datasheet for **RC213633**

TMEM98 (NM_001033504) Human Tagged ORF Clone

Product data:

Product Type:	Expression Plasmids
Product Name:	TMEM98 (NM_001033504) Human Tagged ORF Clone
Tag:	Myc-DDK
Symbol:	TMEM98
Synonyms:	TADA1
Mammalian Cell Selection:	Neomycin
Vector:	pCMV6-Entry (PS100001)
E. coli Selection:	Kanamycin (25 ug/mL)
ORF Nucleotide Sequence:	>RC213633 ORF sequence Red=Cloning site Blue=ORF Green=Tags(s)

TTTTGTAATACGACTCACTATAGGGCGCCGGGAATTCGTCGACTGGATCCGGTACCGAGGAGATCTGCC
GCC**CGATCGCC**

ATGGAGACTGTGGTGATTGTTGCCATAGGTGTGCTGGCCACCATCTTCTGGCTTCGTTTGCAGCCTTGG
TGCTGGTTTGCAGGCAGCGCTACTGCCGGCCGCGAGACCTGCTGCAGCGCTATGATTCTAAGCCATTGT
GGACCTCATTGGTGCCATGGAGACCCAGTCTGAGCCCTCTGAGTTAGAACTGGACGATGTCGTTATCACC
AACCCACATTGAGGCCATTCTGGAGAATGAAGACTGGATCGAAGATGCCTCGGGTCTCATGTCCCACT
GCATTGCCATCTGAAGATTTGTACACTCTGACAGAGAAGCTTGTGCCATGACAATGGGCTCTGGGGC
CAAGATGAAGACTTCAGCCAGTGTGAGCGACATCATTGTGGTGGCCAAGCGGATCAGCCCAAGGGTGGAT
GATGTTGTGAAGTCGATGTACCCTCCGTTGGACCCAACTCCTGGACGCACGGACGACTGCCCTGCCTC
TGTCTGTGACGTCACCTGGTGTGGTGACAAGGAATGCCTGCCATCTGACGGGAGGCTGGACTGGATTGA
CCAGTCTCTGTGGCTGCTGAGGAGCAATTTGGAAGTCCTTCGAGAAGCAGCCCTAGCTTCTGAGCCAGAT
AAAGGCCCTCCAGGCCCTGAAGGCTTCTGCAGGAGCAGTCTGCAATT

ACGCGTACGCGGGCCGCTCGAGCAGAACTCATCTCAGAAGAGGATCTGGCAGCAAATGATATCCTGGATT
ACAAGGATGACGACGATAAGGTTTAA



[View online »](#)

Protein Sequence: >RC213633 protein sequence
Red=Cloning site Green=Tags(s)

METVVIVAIGVLATIFLASFAALVLVCRQRYCRPRDLLQRYDSKPIVDLIGAMETQSEPSELEDDVVIT
 NPHIEAILENEDWIEDASGLMSHCIAILKICHTLTEKLVAMTMGSGAKMKTSASVSDIIVVAKRISPRVD
 DVVKSMYPPLDPKLLDARTTALLLSVSHLVLVTRNACHLTGGLDWIDQSLAAEEHLEVLREAAASEPD
 KGLPGPEGFLQEQSAI

TRTRPLEQKLISEEDLAANDILDYKDDDDKV

Chromatograms: https://cdn.origene.com/chromatograms/mk6384_b04.zip

Restriction Sites: SgfI-MluI

Cloning Scheme:



ACCN: NM_001033504

ORF Size: 678 bp

OTI Disclaimer: The molecular sequence of this clone aligns with the gene accession number as a point of reference only. However, individual transcript sequences of the same gene can differ through naturally occurring variations (e.g. polymorphisms), each with its own valid existence. This clone is substantially in agreement with the reference, but a complete review of all prevailing variants is recommended prior to use. [More info](#)

OTI Annotation: This clone was engineered to express the complete ORF with an expression tag. Expression varies depending on the nature of the gene.

Components: The ORF clone is ion-exchange column purified and shipped in a 2D barcoded Matrix tube containing 10ug of transfection-ready, dried plasmid DNA (reconstitute with 100 ul of water).

Reconstitution Method:

1. Centrifuge at 5,000xg for 5min.
2. Carefully open the tube and add 100ul of sterile water to dissolve the DNA.
3. Close the tube and incubate for 10 minutes at room temperature.
4. Briefly vortex the tube and then do a quick spin (less than 5000xg) to concentrate the liquid at the bottom.
5. Store the suspended plasmid at -20°C. The DNA is stable for at least one year from date of shipping when stored at -20°C.

RefSeq: [NM_001033504.1](#), [NP_001028676.1](#)

RefSeq Size: 1732 bp

RefSeq ORF: 681 bp

Locus ID: 26022

UniProt ID: [Q9Y2Y6](#)

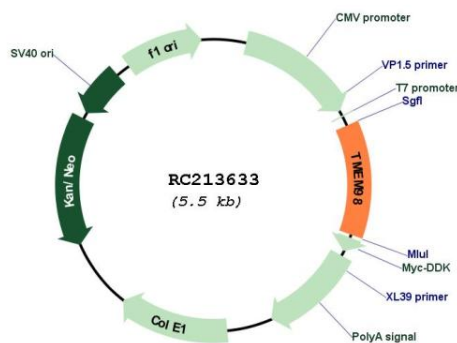
Cytogenetics: 17q11.2

Protein Families: Transmembrane

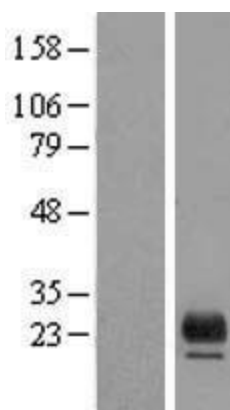
MW: 24.6 kDa

Gene Summary: This gene encodes a transmembrane protein. A missense mutation in this gene result in Nanophthalmos 4 (NNO4). Alternatively spliced transcript variants encoding the same protein have been found for this gene. [provided by RefSeq, Sep 2014]

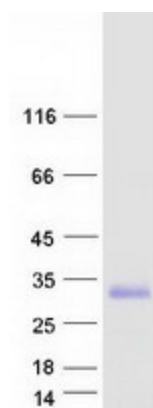
Product images:



Circular map for RC213633



Western blot validation of overexpression lysate (Cat# [LY422371]) using anti-DDK antibody (Cat# [TA50011-100]). Left: Cell lysates from untransfected HEK293T cells; Right: Cell lysates from HEK293T cells transfected with RC213633 using transfection reagent MegaTran 2.0 (Cat# [TT210002]).



Coomassie blue staining of purified TMEM98 protein (Cat# [TP313633]). The protein was produced from HEK293T cells transfected with TMEM98 cDNA clone (Cat# RC213633) using MegaTran 2.0 (Cat# [TT210002]).