

Product datasheet for RC213629

TAS2R39 (NM_176881) Human Tagged ORF Clone

Product data:

Product Type:	Expression Plasmids
Product Name:	TAS2R39 (NM_176881) Human Tagged ORF Clone
Tag:	Myc-DDK
Symbol:	TAS2R39
Synonyms:	T2R39; T2R57
Mammalian Cell Selection:	Neomycin
Vector:	pCMV6-Entry (PS100001)
E. coli Selection:	Kanamycin (25 ug/mL)
ORF Nucleotide Sequence:	>RC213629 representing NM_176881 Red=Cloning site Blue=ORF Green=Tags(s)

TTTTGTAATACGACTCACTATAGGGCGCCGGGAATTCGTCGACTGGATCCGGTACCGAGGAGATCTGCC
GCC**CGATCGCC**

ATGCTAGGGAGATGTTTTCTCCAGACACCAAAGAGAAGCAACAGCTCAGAATGACTAACTCTGCGATC
CTGCAGAAAGTGAATTGTCGCCATTTCTCATCACCTTAATTTAGCAGTTTTACTTGCTGAATACCTCAT
TGGTATCATTGCAAATGGTTTCATCATGGCTATACATGCAGCTGAATGGGTTCAAATAAGGCAGTTTCC
ACAAGTGGCAGGATCCTGGTTTTCTGAGTGTATCCAGAATAGCTCTCAAAGCCTCATGATGTTAGAAA
TTACCATCAGCTCAACCTCCCTAAGTTTTATTCTGAAGACGCTGTATATTATGCATTCAAATAAGTTT
TATATTCTAAATTTTTGTAGCCTGTGGTTTGCTGCCTGGCTCAGTTTCTTCTACTTTGTGAAGATTGCC
AATTTCTCCTACCCCTTTTCTCAAAGTGGGAGGAAATTAAGTGGATTGATACCTGGCTTCTGTGGC
TGTCCGTGTTTATTTCTTCAGTCACAGCATGTTCTGCATCAACATCTGCACTGTGATTGTAACAATTC
TTCCCTATCCACTCCTCCAACCTCCACTAAGAAAACATACTTGTCTGAGATCAATGTGGTCCGGTCTGGCT
TTTTCTTTAACCTGGGATTGTGACTCCTCTGATCATGTTTCATCCTGACAGCCACCCTGCTGATCCTCT
CTCTCAAGAGACACCCCTACACATGGGAAGCAATGCCACAGGGTCCAACGACCCAGCATGGAGGCTCA
CATGGGGGCCATCAAAGCTATCAGCTACTTTCTCATTCTCTACATTTTCAATGCAGTTGCTCTGTTTATC
TACCTGTCCAACATGTTTGACATCAACAGTCTGTGGAATAATTTGTGCCAGATCATCATGGCTGCCTACC
CTGCCAGCCACTCAATTCTACTGATTCAAGATAACCCTGGGCTGAGAAGAGCCTGGAAGCGGCTTCAGCT
TCGACTTCATCTTTACCCAAAAGAGTGGACTCTG

ACGCGTACGCGGCCGCTCGAGCAGAACTCATCTCAGAAGAGGATCTGGCAGCAAATGATATCCTGGATT
ACAAGGATGACGACGATAAGGTTTAA



[View online »](#)

Reconstitution Method:

1. Centrifuge at 5,000xg for 5min.
2. Carefully open the tube and add 100ul of sterile water to dissolve the DNA.
3. Close the tube and incubate for 10 minutes at room temperature.
4. Briefly vortex the tube and then do a quick spin (less than 5000xg) to concentrate the liquid at the bottom.
5. Store the suspended plasmid at -20°C. The DNA is stable for at least one year from date of shipping when stored at -20°C.

RefSeq: [NM_176881.2](#), [NP_795362.2](#)

RefSeq Size: 1017 bp

RefSeq ORF: 1017 bp

Locus ID: 259285

UniProt ID: [P59534](#)

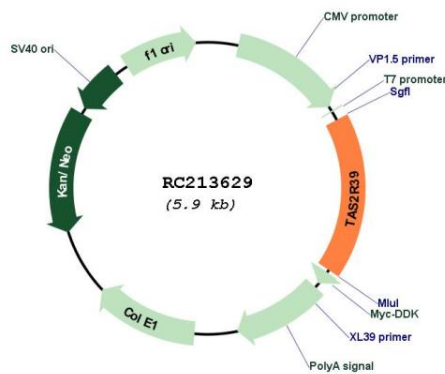
Cytogenetics: 7q34

Protein Pathways: Taste transduction

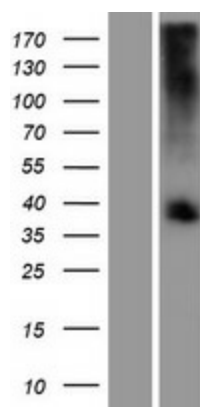
MW: 38.4 kDa

Gene Summary: The protein encoded by this gene is a bitter taste receptor that detects green tea catechins, soy isoflavones, and theaflavins. The encoded protein is gustducin-linked and may activate alpha gustducin. This gene is intronless. [provided by RefSeq, Dec 2015]

Product images:



Circular map for RC213629



Western blot validation of overexpression lysate (Cat# [LY406135]) using anti-DDK antibody (Cat# [TA50011-100]). Left: Cell lysates from untransfected HEK293T cells; Right: Cell lysates from HEK293T cells transfected with RC213629 using transfection reagent MegaTran 2.0 (Cat# [TT210002]).