

Product datasheet for RC213627

CDC42 Binding Protein Kinase Beta (CDC42BPB) (NM_006035) Human Tagged ORF Clone

Product data:

Product Type:	Expression Plasmids
Product Name:	CDC42 Binding Protein Kinase Beta (CDC42BPB) (NM_006035) Human Tagged ORF Clone
Tag:	Myc-DDK
Symbol:	CDC42 Binding Protein Kinase Beta
Synonyms:	MRCKB
Mammalian Cell Selection:	Neomycin
Vector:	pCMV6-Entry (PS100001)
E. coli Selection:	Kanamycin (25 ug/mL)
ORF Nucleotide Sequence:	>RC213627 representing NM_006035 Red=Cloning site Blue=ORF Green=Tags(s)

TTTTGTAATACGACTCACTATAGGGCGGCCGGAATTCGTCGACTGGATCCGGTACCGAGGAGATCTGCC
GCC**CGATCGCC**

ATGTCGGCCAAGGTGCGGCTCAAGAAGCTGGAGCAGCTGCTCCTGGACGGGCCCTGGCGCAACGAGAGCG
CCCTGAGCGTGGAAACGCTGCTCGACGTGCTCGTCTGCCTGTACACCGAGTGCAGCCACTCGGCCCTGCG
CCGCGACAAGTACGTGGCCGAGTTCCTCGAGTGGGCTAAACCATTACACAGCTGGTAAAGAAATGCAG
CTTCATCGAGAAGACTTTGAAATAATTAAGTAATTGGAAGAGGTGCTTTTGGTGAGTTGCTGTTGTCA
AAATGAAGAATACTGAACGAATTTATGCAATGAAAATCCTCAACAAGTGGGAGATGCTGAAAAGAGCAGA
GACCGCGTGTCCGAGAGGAGCGCGATGTGCTGGTGAACGGCGACTGCCAGTGGATCACCGCGCTGCAC
TACGCCTTTCAGGACGAGAACCCTGTACTTAGTCATGGATTACTATGTGGTGGTGATTTACTGACCC
TGCTCAGCAAATTTGAAGACAAGCTTCCGGAAGATATGGCGAGGTTCTACATTGGTGAATGGTGTGCG
CATTGACTCCATCCATCAGCTTCATTACGTGCACAGAGACATTAACCTGACAAATGCTCTTTTGGACGTG
AATGGTCATATCCGCCTGGCTGACTTTGGATCATGTTGAAGATGAATGATGATGGCACTGTGCAGTCTC
CCGTGGCCGTGGGCACACCTGACTACATCTCGCCGAGATCCTGCAGGCGATGGAGGACGGCATGGGCAA
ATACGGCCCTGAGTGTGACTGGTGGTCTCTGGTGTCTGCATGTATGAGATGCTCTATGGAGAAACGCCG
TTTTATGCGGAGTCACTCGTGGAGACCTATGGGAAGATCATGAACCATGAAGAGCGATTCCAGTCCCAT
CCCATGTCACGGATGTATCTGAAGAAGCGAAGGACCTCATCCAGAGACTGATCTGCAGTAGAGAACGCCG
GCTGGGGCAGAATGGAATAGAGGATTTCAAAAAGCATGCGTTTTTTGAAGGTCTAAATTGGGAAAATATA
CGAAACCTAGAAGCACCTTATATTCCTGATGTGAGCAGTCCCTCTGACACATCCAACCTCGACGTGGATG
ACGACGTGCTGAGAAACACGAAATATTACCTCCTGGTTCTCACACAGGCTTTTCTGGATTACATTTGCC
ATTCATTGGTTTTACATTCACAACGAAAGCTGTTTTTCTGATCGAGGCTCTCTGAAGAGCATAATGCAG
TCCAACACATTAACCAAGATGAGGATGTGCAGCGGGACCTGGAGCACAGCCTGCAGATGGAAGCTTACG
AGAGGAGGATTCGAGGCTGGAACAGGAGAAGCTGGAGCTGAGCAGGAAGCTGCAAGAGTCCACCCAGAC
CGTGCAGTCCCTCCAGGCTCATCTCGGCCCTCAGCAATTCAAACCGAGATAAAGAAATCAAAAAGCTA



[View online »](#)

AATGAAGAAATCGAACGCTTGAAGAATAAAATAGCAGATTCAAACAGGCTCGAGCGACAGCTTGAGGACA
 CAGTGGCGCTTCGCCAAGAGCGTGAGGACTCCACGCAGCGGCTGCGGGGGCTGGAGAAGCAGCACC CGCT
 GGTCCGGCAGGAGAAGGAGGAGCTGCACAAGCAACTGGTTGAAGCCTCAGAGCGGTTGAAATCCCAGGCC
 AAGGAICTCAAAGATGCCATCAGCAGCGAAAGCTGGCCCTGCAGGAGTTCTCGGAGCTGAACGAGCGCA
 TGGCAGAGCTCCGTGCCAGAAGCAGAAGGTGTCCCGCAGCTGCGAGACAAGGAGGAGGAGATGGAGGT
 GGCCACGCAGAAGGTGGACGCCATGCGGCAGGAAATGCGGAGAGCTGAGAAGCTCAGGAAAGAGCTGGAA
 GCTCAGCTTGATGATGCTGTTGCTGAGGCCCTCAAGGTGAAGCAAGGAGGCCGGGAGCGGGTGCCACCTT
 GCAAGCAAATGGAAAGCGAGCTGGAGGCCCTCAAGGTGAAGCAAGGAGGCCGGGAGCGGGTGCCACCTT
 AGAGCACCAGCAAGAGATTTCCAAAATCAAATCCGAGCTGGAGAAGAAAGTCTTATTTTATGAAGAGGAA
 TTGGTCAGACGTGAGGCCTCCCATGTGCTAGAAGTAAAAATGTGAAGAAGGAGGTGCATGATTCAGAAA
 GCCACCAGCTGGCCCTGCAGAAAGAAAATCTTGATGTTAAAAGATAAGTTAGAAAAGTCAAAGCGAGAACG
 GCATAACGAGATGGAGGAGGCAGTAGGTACAATAAAAGATAAATACGAACGAGAAAGAGCGATGCTGTTT
 GATGAAAAACAAGAAGCTAACTGCTGAAAATGAAAAGCTCTGTTCCCTTTGGATAAACTCACAGCTCAA
 ATAGACAGCTGGAGGATGAGCTGCAGGATCTGGCAGCCAAGAAGGAGTCAAGTGGCCCACTGGGAAGTCA
 GATTGCGGAAATCATTCACTGAGTGGTCACTGACGAGAAAGATGCCCGGGTTACCTTCAAGCTTTGCTTCC
 AAGATGACCGAAGAGCTCGAGGCTTTGAGGAGTTCTAGTCTGGGGTCAAGAACACTGGACCCGCTGTGGA
 AGGTGCGCCGACCCAGAAGCTGGACATGTCCGCGCGGCTGGAGCTGCAGTGGCCCTGGAGGCGGAGAT
 CCGGGCCAAGCAGCTTGTCCAGGAGGAGCTCAGGAAGTCAAGGACGCCAACCTCACCTTGGAAAGCAAA
 CTAAGGATTCGAAGCCAAAAACAGAGAATTATTAGAAGAAATGGAAATTTTGAAGAAAAAGATGGAAAG
 AAAAAATCAGAGCAGATACTGGGCTCAAACCTCCAGATTTTCCAGATTCCATTTTGGATTTTCAACAC
 TGCTCCTCTTGACATGACCTGACATTTAGAACCAGCTCAGCTAGTGAGCAAGAAACACAAGCTCCGAAG
 CCAGAAGCGTCCCGTCGATGTCTGTGGCTGCATCAGAGCAGCAGGAGCCAAAAGCTCACCAGTTCAGCA
 TCAAGTCTTCCAGCCCTACTCAGTGCAGCCACTGCACCTCCCTGATGGTTGGGCTGATCCGGGAGGG
 CTACGCTTGCAGGTTGTGTTCTTTGCTTGCACGTTGCTGCAAGACGGTGCSCCCAGGTTGTCGCCA
 ATACCTCCCGAGCAGTCCAAGAGGCTCTGGGCGTGGACGTGCAGCGAGGCATCGGAACAGCCTACAAAAG
 GCCATGTCAAGGTCCCAAAGCCACGGGGTGAAGAAGGGATGGCAGCGCGCATATGCAGTCTGTGTA
 CTGCAAGCTTCTCTGTATGATCTGCCTGAAGGAAAAATCCACCCAGCCTGGTGTGATTGCGAGCCAAGTC
 TTGGATCTCAGAGATGACGAGTTTTCCGTGAGCTCAGTCTGGCCTCAGATGTCATTGATGCTACACGCC
 GAGATATCCATGTATATTCAGGGTGACGGCTCTCTCTAGGTGCACCTTCTAAGACCAGCTCGCTGCT
 CATTCTGACAGAAAATGAGAATGAAAAGAGGAAGTGGGTTGGGATTCTAGAAGGACTCCAGTCCATCCTT
 CATAAAAACCGGCTGAGGAATCAGTCTGTCATGTTCCCTTGGAAAGCCTACGACAGCTCGCTGCCTCTCA
 TCAGGCCATCCTGACAGCTGCCATCGTGGATGCAGACAGGATTGCAAGTGGCCTAGAAGAAGGGCTCTA
 TGTCATAGAGGTACCCGAGATGTGATCGTCCGTGCCGCTGACTGTAAGAAGGTACACCAGATCGAGCTT
 GCTCCCAGGGAGAAGATTGTAATCCTCCTCTGTGGCCGGAACCACCATGTGCACCTCTATCCGTGGTCTG
 CCCTTGATGGAGCGGAAGGCAGCTTTGACATCAAGCTTCCGGAACCAAAGGCTGCCAGCTCATGGCCAC
 GGCCCACTCAAGAGGAACTCTGGCACCTGCCTGTTTGTGGCCGTGAAACGGCTGATCCTTTGCTATGAG
 ATCCAGAGAACGAAGCCATTCCACAGAAAGTTCAATGAGATTGTGGTCCCGGCAGCGTGCAGTGCCTGG
 CGGTGCTCAGGGACAGGCTCTGTGTGGGCTACCTTCTGGGTTCTGCCTGCTGAGCATCCAGGGGACGG
 GCAGCCTCTAAACCTGGTAAATCCCAATGACCCCTCGTTGCGTTCCTCTCACAACAGTCTTTTGTATGCC
 CTTTGTGCTGTGGAGCTCGAAAGCGAGGAGTACCTGCTTTGCTTACGCCACATGGGACTGTACGTGGACC
 CGCAAGGCCGGAGGGCACGCGCAGGAGCTCATGTGGCCTGCGGCTCCTGTCGCTGTAGTTGCGAGCCC
 CACCCACGTCACGGTGTACAGCGAGTATGGCGTGGACGCTTTGATGTGCGCACCATGGAGTGGGTGCAG
 ACCATCGGCTGCGGAGGATAAGGCCCTGAACCTCTGAAGGCACCCTCAACCTCCTCAACTGCGAGCCTC
 CACGCTTGATCTACTTCAAGAGCAAGTTCTCGGGAGCGGTTCTCAACGTGCCGGACACCTCCGACAACAG
 CAAGAAGCAGATGCTGCGCACAGGAGCAAAAGGCGGTTCTGTTCAAGTCCCAGAGGAAGAGAGACTG
 CAGCAGAGGCGAGAGATGCTTAGAGACCAGAATTGAGATCCAAAATGATATCCAAACCAACCAACTTCA
 ACCAGTGGCCACATGGGCCAGGCGACGGCATGCAGGTGCTCATGGACCTGCCTCTGAGTGTGTGCC
 CCCTCCAGGAGGAAAGGCCGGCCCGCTCCCAACCACTGGCTCGCCAGCCTCCATCCAGGAACAAG
 CCCTACATCTCGTGGCCCTCATCAGGTGGATCGGAGCCTAGCGTACTGTGCCTCTGAGAAGTATGTCTG
 ATCCAGACCAGGACTTTGACAAAGAGCCTGATTCGGACTCCACCAAACTCAACTCCATCGAATAGCTC
 CAACCCAGCGGCCACCCAGGCCAACTCCCCCACAGGAGCCAGCTCCCCCTCGAAGGCTGGAGCAG
 CCGGCTGTGACACC

ACGCGTACGCGGCCGCTCGAGCAGAACTCATCTCAGAAGAGGATCTGGCAGCAATGATATCCTGGATT
ACAAGGATGACGACGATAAGGTTTAA

Protein Sequence:

>RC213627 representing NM_006035
Red=Cloning site Green=Tags(s)

MSAKVRLKKLEQLLLDGPWRNESALSVETLLDVLVCLYTECSHSALRRDKYVAEFLEWAKPFTQLVKEMQ
LHREDFEIIKVIGRGAfGEVAVVKMKNTERIYAMKILNKWEMLKRAETACFREERDVLVNGDCQWITALH
YAFQDENHLVLMDDYVGGDLLTLLSKFEDKLPEDMARFYIGEMVLAIDSIHQLHYVHRDIKPDNVLLDV
NGHIRLADFGSCLKMNDGTVQSSVAVGTPDYISPEILQAMEDGMGKYGPECDWWSLGVCMYEMLYGETP
FYAESLVETYGKIMNHEERFQFP SHVTDVSEEAKDLIQRLICSRERRLQNGIEDFKKHAF FEGLNWENI
RNLEAPYIPDVSSPSDTSNFDVDDDLRNT EILPPGSHTGFSGLHLPF IGFTFTTESCFSDRGSLKSIMQ
SNTLTKDEDVQRDL EHS LQMEAYERRIRLEQEKLEL SRKLESTQTVQSLHGSSRALSNSNRDKEIKKL
NEEIERLKNKIADSNRLE RQLEDTVLRQEREDSTQRLRGL EKQHRVVRQEKEELHKQLVEASERLKSQA
KELKDAHQQRKLALQEFSELNERMAELRAQKQKVSRLRDKEEEME VATQKVDAMRQEMRRAEKLRKELE
AQLDDAVA EASKERKLRHSENFCKQMESELEALKVKQGGRGAGATLEHQQEISKIKSELEKLVFYEEE
LVRR EASHVLEVNKKEVHDSESHQLALQKEILMLKDKLEKSKRERHNEMEEAVGTIKDKYERERAMLF
DENKKLTAENEKLC SFVDKLT AQNRQLEDELQDLA AKKESVAHWAEQIAEIIQWVSDEKDARGYLQALAS
KMTEELEALRSSLSGSR TLDPLWKVRRSQKLDMSARLELQSALEAEIRAKQLVQEELRKVKDANLTLESK
LKDSEAKNRELL EEMEILKKKMEEKFRADTGLKLPDFQDSIFEYFN TAPLAHDLTFRTSSASEQETQAPK
PEASPSMSVAASEQQEPKAHQFSIKSFSSPTQCSHCTSLMVGLIRQGYACEVCSFACHV SCKD GAPQVCP
IPPEQSKRPLGVDVQRGIGTAYKGHVKVPKPTGVKKGWQRAYAVVCDCKLFLYDLPEGKSTQPGVIASQV
LDLRDDEF SVSSVLASDVIHATRRDIPICFRVTASLLGAPSKTSLLILTENENEKRKWWGILEGLQSIL
HKNRLRNQVHVH VPLEAYDSSLPLIKAILTAAIVDADRIAVGLEEGLYVIEVTRDVI VRAADCKKVH QIEL
APREKIVILLCGRNHHVHL YPWSLDGAEGSFDIKLPETKGCQLMATATLKRNSGTCLFVAVKRLILCYE
IQRTPFHRKFNEIVAPGSVQCLAVLRDRLCVGYPSGFCLLSIQGDGQPLNLVNPNDPSLAFLSQQSFDA
LCAVELESEYLLCF SHMGLYVDPQRRARAQELM WPAAPVACSCSPTHVTYVYSEYGVDFVDR TMEWVQ
TIGLRRIRPLNSEGLNLLNCEPPRLIYFKSKFSGAVLNVPDTS DNSKQMLRTRSKRRFVFKVPEEERL
QQRREMLRDP ELRSKMI SNPTNFNHVAHMGPGDGMQVLM DPLSAVPPSQEERPGAPTNLARQPPSRNK
PYISWPSSGGSEPSVTVPLRSMSPDQDFDKEPDS DSTKHSTPSNSSNP SGPPSPNSPHRSQ LPLEGLEQ
PACDT

TRTRPLEQKLISEEDLAANDILDYKDDDDKV

Restriction Sites:

Sgfl-MluI

Cloning Scheme:



ACCN: NM_006035

ORF Size: 2333 bp

OTI Disclaimer: Due to the inherent nature of this plasmid, standard methods to replicate additional amounts of DNA in E. coli are highly likely to result in mutations and/or rearrangements. Therefore, OriGene does not guarantee the capability to replicate this plasmid DNA. Additional amounts of DNA can be purchased from OriGene with batch-specific, full-sequence verification at a reduced cost. Please contact our customer care team at custsupport@origene.com or by calling 301.340.3188 option 3 for pricing and delivery.

The molecular sequence of this clone aligns with the gene accession number as a point of reference only. However, individual transcript sequences of the same gene can differ through naturally occurring variations (e.g. polymorphisms), each with its own valid existence. This clone is substantially in agreement with the reference, but a complete review of all prevailing variants is recommended prior to use. [More info](#)

OTI Annotation: This clone was engineered to express the complete ORF with an expression tag. Expression varies depending on the nature of the gene.

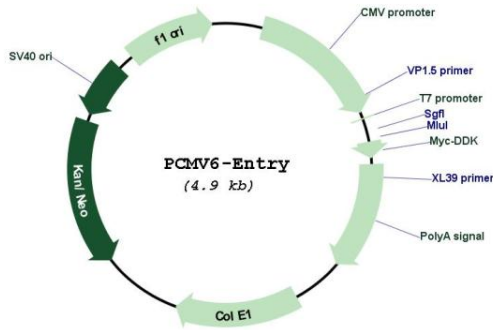
Components: The ORF clone is ion-exchange column purified and shipped in a 2D barcoded Matrix tube containing 10ug of transfection-ready, dried plasmid DNA (reconstitute with 100 ul of water).

- Reconstitution Method:**
1. Centrifuge at 5,000xg for 5min.
 2. Carefully open the tube and add 100ul of sterile water to dissolve the DNA.
 3. Close the tube and incubate for 10 minutes at room temperature.
 4. Briefly vortex the tube and then do a quick spin (less than 5000xg) to concentrate the liquid at the bottom.
 5. Store the suspended plasmid at -20°C. The DNA is stable for at least one year from date of shipping when stored at -20°C.

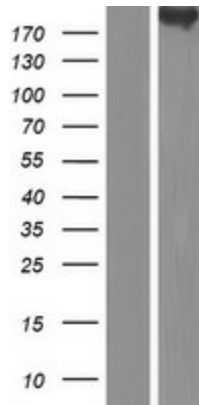
RefSeq Size: 6782 bp

RefSeq ORF:	5136 bp
Locus ID:	9578
UniProt ID:	Q9Y5S2
Cytogenetics:	14q32.32
Domains:	PBD, pkinase, S_TK_X, CNH, TyrKc, PH, DAG_PE-bind, S_TKc, M
Protein Families:	Druggable Genome, Protein Kinase
MW:	191.65 kDa
Gene Summary:	This gene encodes a member of the serine/threonine protein kinase family. The encoded protein contains a Cdc42/Rac-binding p21 binding domain resembling that of PAK kinase. The kinase domain of this protein is most closely related to that of myotonic dystrophy kinase-related ROK. Studies of the similar gene in rat suggested that this kinase may act as a downstream effector of Cdc42 in cytoskeletal reorganization. [provided by RefSeq, Jul 2008]

Product images:



Circular map for RC213627



Western blot validation of overexpression lysate (Cat# [LY416908]) using anti-DDK antibody (Cat# [TA50011-100]). Left: Cell lysates from untransfected HEK293T cells; Right: Cell lysates from HEK293T cells transfected with RC213627 using transfection reagent MegaTran 2.0 (Cat# [TT210002]).