

## Product datasheet for RC213624

### SEZ6L (NM\_021115) Human Tagged ORF Clone

#### Product data:

Product Type:	Expression Plasmids
Product Name:	SEZ6L (NM_021115) Human Tagged ORF Clone
Tag:	Myc-DDK
Symbol:	SEZ6L
Mammalian Cell Selection:	Neomycin
Vector:	pCMV6-Entry (PS100001)
E. coli Selection:	Kanamycin (25 ug/mL)
ORF Nucleotide Sequence:	>RC213624 representing NM_021115 Red=Cloning site Blue=ORF Green=Tags(s)

TTTTGTAATACGACTCACTATAGGGCGGCCGGGAATTCGTCGACTGGATCCGGTACCGAGGAGATCTGCC  
GCC**CGATCGCC**

ATGCCCGCGCCCGGCCCGCCCGGGACTCCGCGGGATCTCGCTGTTCTCTCGCTCTGCTCTGGGGA  
GCCCGCGGCAGCGCTGGAGCGAGATGCTCTTCCCAGGGAGATGCTAGCCCTTTGGGTCTTACCTCT  
GCCCTCAGGAGCCCCGGAGAGAGGAGCAGTCTGGCAAAGAGCACCTGAAGAGAGAGTGGTAACAGCGCCC  
CCCAGTTCTCACAGTCGGCGGAAGTCTGGGCGAGCTGGTCTGGATGGGACCGCACCTTGCACATC  
ACGACATCCCAGCCCTGTACCCGCTGCTTCCAGAGGAGGCCCGCCCCAAGCACGCCTTCCCCCAAGAA  
GAAACTGCCTTTCGCTCAAGCAGGTGAACTCTGCCAGGAAGCAGCTGAGGCCCAAGGCCACCTCCGACGC  
ACTGTCCAAAGGGCAGGGTCCCAGCCAGCGTCCCAGGGCCTAGATCTCCTCTCCTCCACGGAGAAGC  
CTGGCCACCGGGGACCCGGACCCATCGTGGCTCCGAGGAGGCATCAGAAGTCCCCCTTTGGCTGGA  
CCGAAAGGAGAGTGCGGTCCCTACAACACCCGCACCCCTGCAAATCTCCCCCTTCACTTCGCAGCCCTAT  
GTGGCCACACACTCCCCAGAGGCCAGAACCCGGGGAGCCTGGGCTGACATGGCCAGGAGGCCCCCC  
AGGAGGACACCAGCCCCATGGCCCTGATGGACAAAGGTGAGAATGAGCTGACTGGGTGAGCCTCAGAGGA  
GAGCCAGGAGACCACTACCTCCACCATTATCACCACCAGGTATCACCACCGAGCAGGCACCAGCTCTC  
TGCAGTGTGAGCTTCTCAATCCTGAGGGGTACATTGACTCCAGCGACTACCCACTGCTGCCCTCAACA  
ACTTTCTGGAGTGACATACAACGTGACAGTCTCACTGGCTATGGGGTGGAGCTCCAGGTGAAGAGTGT  
GAACCTGTCCGATGGGGAAGTCTCCATCCGCGGGGTGGACGGCCCTACCCTGACCGTCTGGCCAAC  
CAGACACTCCTGGTGGAGGGGCAGGTAATCCGAAGCCCCACCAACACCATCTCCGTCTACTTCCGGACCT  
TCCAGGACGACGGCCTTGGGACCTTCCAGCTTCACTACCAGGCCTTATGCTGAGCTGCAACTTTCCCCG  
CCGGCTGACTCTGGGGATGTCACGGTATGGACTGCACTCAGGTGGGTGGCCCACTTCACTGCCAC  
CTGGGCTATGAGCTCCAGGGCGTAAGATGCTGACATGCATCAATGCCTCCAAGCCGCACTGGAGCAGCC  
AGGAGCCCATCTGCTCAGCTCCTTGTGGAGGGCAGTGCAATGCCACCATCGGCCGCTCCTCTCCCC  
AAGTTACCCTGAAAACACAAATGGGAGCCAATTCTGCATCTGGACGATTGAAGCTCCAGAGGGCCAGAAG  
CTGCACCTGCACCTTGGAGGCTGTTGCTGCATGACAAGGACAGGATGACGGTTACAGCGGGCAGACCA  
ACAAGTCAGCTCTTCTACGACTCCCTCAAACCGAGAGTGTCCCTTTGAGGGCTGCTGAGCGAAGG



[View online »](#)

CAACACCATCCGCATCGAGTTCACGTCCGACCAGGCCCGGGCGGCCTCCACCTTCAACATCCGATTTGAA  
 GCGTTTGAGAAAGGCCACTGCTATGAGCCCTACATCCAGAATGGGAATTCACATACCCGACCCGACCT  
 ATAACATTGGGACTATAGTGGAGTTCACCTGCGACCCCGGCCACTCCCTGGAGCAGGGCCCGGCCATCAT  
 CGAATGCATCAATGTGCGGGACCCATACTGGAATGACACAGAGCCCTGTGCAGAGCCATGTGTGGTGGG  
 GAGCTCTCTGCTGGCTGGGTGGTATTGTCCCCAACTGGCCCGAGCCCTACGTGGAAGGTGAAGATT  
 GTATCTGGAAGATCCACGTGGGAGAAGAGAAACGGATCTTCTTAGATATCCAGTTCCTGAATCTGAGCAA  
 CAGTGACATCTTGACCATCTACGATGGCGACGAGGTGATGCCCCACATCTTGGGGCAGTACCTTGGGAAC  
 AGTGGCCCCAGAACTGTACTCTCCAGCCAGACTTAACCATCCAGTTCATTTCGGACCCTGCTGGCC  
 TCATCTTTGAAAAGGGCCAGGGATTTATCATGAACTACATAGAGGTATCAAGGAATGACTCCTGCTCGGA  
 TTTACCCGAGATCCAGAATGGCTGGAAAACCACTTCTCACACGGAGTTGGTGCGGGGAGCCAGAATCACC  
 TACCAGTGTGACCCCGCTATGACATCGTGGGAGTGACACCCTCACCTGCCAGTGGGACCTCAGCTGGA  
 GCAGCGACCCCATTTTGTGAGAAAATTACTGACCCGACCCCGGAGAGGTGGATCACTCGACCCG  
 CTTAATTTGGATCCTGTGCTGCTGGTGGGACCACCATCCAATACACCTGCAACCCCGTTTTGTGCTT  
 GAAGGGAGTCTCTTCTGACCTGTACAGCCGTGAAACAGGGACTCCCATCTGGAGCTCTCGCTGCCCC  
 ACTGCGTTTCGGAGGAGTCCCTGGCATGTGACAACCCAGGGCTGCTGAAAATGGATACCAAATCCTGTA  
 CAAGCGACTTACTCTGCCAGGAGTCCCTCACCTTCATGTGCTACGAAGCTTTGAGCTCATGGGTGAA  
 GTGACCATCCGCTGCATCCTGGGACAGCCATCCCCTGGAACGGGCCCTGCCCTGTGTAAGTTAATC  
 AAGACAGTTTTGAACATGCTTTAGAAGTAGCAGAAGCGGCAGCAGAGACGTGCTGGAAGGGGGAAACAT  
 GGCCCTGGCTATCTTCATCCCGTCTCATCTCCTTACTGCTGGGAGGAGCCTACATTTACATCACA  
 AGATGTCGCTACTATTCCAACCTCCGCCTGCTGATGTACTCCACCCTACAGCCAGATCACCGTGG  
 AAACCGAGTTTGACAACCCATTTACGAGACAGGGGAAACCAGAGAGTATGAGGTTTCTATC

ACGCGTACGCGGCCGCTCGAGCAGAACTCATCTCAGAAGAGGATCTGGCAGCAAATGATATCCTGGATT  
 ACAAGGATGACGACGATAAGGTTTAA

**Protein Sequence:**

>RC213624 representing NM\_021115  
 Red=Cloning site Green=Tags(s)

MPAARPPAAGLRGISLFLALLLGSPPAAALERDALPEGDASPLGPYLLPSGAPERGSPGKEHPEERVVTP  
 PSSSQSAEVLGELVLDGTAPSAHHDIPALSPLLPEEARPKHALPPKKLPSLKQVNSARKQLRPKATSAA  
 TVQRAGSQPASQGLDLLSSSTEKPGPPGDPDPIVASEEASEVPLWDRKESAVPTTAPLQISPFSTQPY  
 VAHTLPQRPEPGEPPDMAQEAPQEDTSPMALMDKGENELTGSASEESQETTTSTIITTTVITTEQAPAL  
 CSVSFSNPEGYIDSSDYPLLPLNPFLECTYINVTVYTGYGVELQVKSVDLSDGELLIRGVDGPTLTVLAN  
 QTLLVEGQVIRSPNTISVYFRFTQDDGLGTFQLHYQAFMLSCNFPRRPSGDVTVMDLHSGGVAHFHCH  
 LGYELQGAKMLTCINASKPHWSSQEPICSAPCGGAVHNATIGRVLSPSPENTNGSQFCIWTIEAPEGQK  
 LHLHFERLLLHDKDRMTVHSGQTNKSALLYDSLQTESVPEFGLLSEGNTIRIEFTSDQARAASFNIRFE  
 AFEKGHCYEPYIQNGNFTTSDPTYNIGTIVEFTCDPGHSLEQGPATIECINVRDPYWNDEPLCRAMCGG  
 EL SAVAGVVLSPNWPEPYVEGEDCIWKIHWGEEKRIFLDIQFLNLSNSDILTIYDGEVMPHILGQYLG  
 SGPQKLYSSTPDLTIQFHSDPAGLIFGKGQGFIMNYIEVSRNDSCDLPEIQNGWKTTSHTELVRGARIT  
 YQCDPGYDIVGSDTLTCQWDLWSWSSDPPFCEKIMYCTDPGEVDHSTRLLISDPVLLVGTTIYQTCNPGFVL  
 EGSSLLTCYSRETGTPIWTSRLPHCVSEESLACDNPLPENGYQILYKRLYLPGESLTFMCEYEGFELMGE  
 VTIRCILGQPSHWNGPLPVCKVNQDSFEHALLEVAEAAAETSLEGGNMALAIPIPVLIIISLLGGAYIYT  
 RCRYNSNLRPLMYSHPYQITVETFDNPIYETGETREYEVSI

TRTRPLEQKLISEEDLAANDILDYKDDDDKV

**Chromatograms:**

[https://cdn.origene.com/chromatograms/mg4090\\_c05.zip](https://cdn.origene.com/chromatograms/mg4090_c05.zip)

**Restriction Sites:**

Sgfl-MluI

**Cloning Scheme:**


**ACCN:** NM\_021115

**ORF Size:** 3072 bp

**OTI Disclaimer:** The molecular sequence of this clone aligns with the gene accession number as a point of reference only. However, individual transcript sequences of the same gene can differ through naturally occurring variations (e.g. polymorphisms), each with its own valid existence. This clone is substantially in agreement with the reference, but a complete review of all prevailing variants is recommended prior to use. [More info](#)

**OTI Annotation:** This clone was engineered to express the complete ORF with an expression tag. Expression varies depending on the nature of the gene.

**Components:** The ORF clone is ion-exchange column purified and shipped in a 2D barcoded Matrix tube containing 10ug of transfection-ready, dried plasmid DNA (reconstitute with 100 ul of water).

**Reconstitution Method:**

1. Centrifuge at 5,000xg for 5min.
2. Carefully open the tube and add 100ul of sterile water to dissolve the DNA.
3. Close the tube and incubate for 10 minutes at room temperature.
4. Briefly vortex the tube and then do a quick spin (less than 5000xg) to concentrate the liquid at the bottom.
5. Store the suspended plasmid at -20°C. The DNA is stable for at least one year from date of shipping when stored at -20°C.

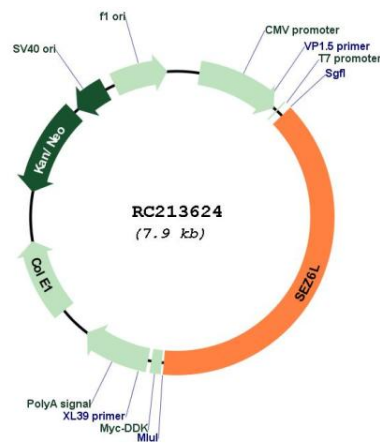
**RefSeq:** [NM\\_021115.5](#)

**RefSeq Size:** 3424 bp

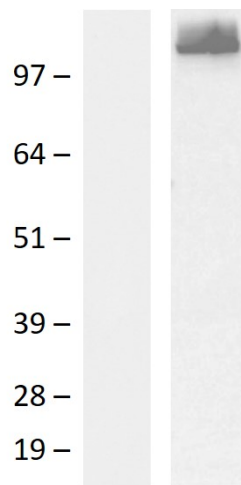
**RefSeq ORF:** 3075 bp

<b>Locus ID:</b>	23544
<b>UniProt ID:</b>	<a href="#">Q9BYH1</a>
<b>Cytogenetics:</b>	22q12.1
<b>Domains:</b>	CCP, CUB
<b>Protein Families:</b>	Druggable Genome, Transmembrane
<b>MW:</b>	109 kDa
<b>Gene Summary:</b>	May contribute to specialized endoplasmic reticulum functions in neurons.[UniProtKB/Swiss-Prot Function]

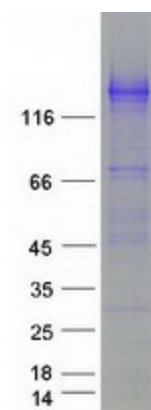
### Product images:



Circular map for RC213624



Western blot validation of overexpression lysate (Cat# [LY412076]) using anti-DDK antibody (Cat# [TA592569]). Left: Cell lysates from untransfected HEK293T cells; Right: Cell lysates from HEK293T cells transfected with RC213624 using transfection reagent PEI.



Coomassie blue staining of purified SEZ6L protein (Cat# [TP313624]). The protein was produced from HEK293T cells transfected with SEZ6L cDNA clone (Cat# RC213624) using MegaTran 2.0 (Cat# [TT210002]).