

## Product datasheet for RC213616

### THSD7A (NM\_015204) Human Tagged ORF Clone

#### Product data:

Product Type:	Expression Plasmids
Product Name:	THSD7A (NM_015204) Human Tagged ORF Clone
Tag:	Myc-DDK
Symbol:	THSD7A
Mammalian Cell Selection:	Neomycin
Vector:	pCMV6-Entry (PS100001)
E. coli Selection:	Kanamycin (25 ug/mL)
ORF Nucleotide Sequence:	>RC213616 representing NM_015204 Red=Cloning site Blue=ORF Green=Tags(s)

TTTTGTAATACGACTCACTATAGGGCGGCCGGGAATTCGTCGACTGGATCCGGTACCGAGGAGATCTGCC  
GCC**CGATCGCC**

ATGGGGCTGCAAGCCAGGCGCTGGGCGTCCGGGAGCCGGGGCGCTGCGGGGCCGCGCCGGGGCGTCCTGC  
AGCTGCTGCCGCTGCCGCTGCCGCTGCCGCTGCTCCTGCTGCTGCTACGCCCGGGCGCCGGCAGGGC  
TGCGGCGCAGGGCGAGGGCGAGGGCGCCACCCTCTATCTGTGGAAGACTGGTCCATGGGGCCGATGTATG  
GGAGATGAATGTGGTCCCGGAGGCATCCAACGAGGGCTGTGTGGTGTGCTCATGTGGAGGATGGACTA  
CACTGCATACTAAGCAAGCGCCGAGAGACCCAATAACCAGCAGAATTGTTTCAAAGTTTGGCATG  
GCACAAAGAGTTGTACGACTGGAGACTGGGACCTTGAATCAGTGTACGCCCGTGAATTTCAAAAAGCCTA  
GAGAAACCTCTTGAGTGCATTAAGGGGGAAGAAGTATTCAGGTGAGGGAGATAGCGTGCATCCAGAAAG  
ACAAAGACATTCTGCGGAGGATATCATCTGTGAGTACTTTGAGCCCAAGCCTCTCCTGGAGCAGGCTTG  
CCTCATTCTTCCAGCAAGATTGCATCGTGTCTGAATTTCTGCCTGGTCCGAATGCTCCAAGACCTGC  
GGCAGCGGGCTCCAGCACCGGACGCGTATGTGGTGGCGCCCCGAGTTCGGAGGCTCTGGCTGTCCAA  
ACCTGACGGAGTCCAGGTGTGCCAATCCAGTCCATGCGAGGCCGAGGAGCTCAGGTACAGCCTGCATGT  
GGGGCCCTGGAGCACCTGCTCAATGCCCACTCCGACAAGTAAAGACAAGCAAGGAGACGCGGGAAGAT  
AAAGAACGGGAAAAGGACCGCAGCAAAGGAGTAAAGATCCAGAAGCCCGGAGCTTATTAAGAAAAAGA  
GAAACAGAAACAGGCAGAACAGACAAGAGAACAATATTGGGACATCCAGATTGGATATCAGACCAGAGA  
GGTTATGTGCATTAACAAGACGGGAAAAGCTGCTGATTTAAGCTTTTGCCAGCAAGAGAAGCTTCCAATG  
ACCTTCCAGTCTGTGTGATCACCAAAGAGTGCCAGGTTTCCGAGTGGTCCAGAGTGGAGCCCTGCTCAA  
AAACATGCCATGACATGGTGTCCCTGCAGGCACTCGTGAAGGACACGAACCATCAGGCAGTTTCCCAT  
TGGCAGTGAAGGAGTGTCCAGAAATTTGAAGAAAAAGAACCTGTTTGTCTCAAGGAGATGGAGTTGTC  
CCCTGTGCCACGTATGGCTGGAGAACTACAGAGTGGACTGAGTCCGCTGTGGACCCTTTGCTCAGTCAGC  
AGGACAAGAGGGCGCGCAACCAGACGGCCCTCTGTGGAGGGGGCATCCAGACCCGAGAGGTGTACTGCGT  
GCAGGCCAACGAAAACCTCCTCTACAATTAAGTACCCACAAGAACAAGAAGCCCTCAAAGCCAAATGGAC  
TTAAAATTATGCACTGGACCTATCCCTAATACTACACAGCTGTGCCACATTCTTGTCCAACCTGAATGTG  
AAGTTTACCTTGGTCCAGCTTGGGGACCTTGTACTTATGAAAAGTGAATGATCAGCAAGGAAAAAAGG



[View online »](#)

CTTCAAACCTGAGGAAGCGGCGCATTACCAATGAGCCCACTGGAGGCTCTGGGGTAACCGGAAACTGCCCT  
 CACTTACTGGAAGCCATTCCCTGTGAAGAGCCTGCCTGTTATGACTGGAAGCAGTGAGACTGGGAAACT  
 GCGAGCCAGATAACGGAAAGGAGTGTGGTCCAGGCACGCAAGTTCAAGAGGTTGTGTGCATCAACAGTGA  
 TGGAGAAGAAGTTGACAGACAGCTGTGCAGAGATGCCATCTTCCCATCCCTGTGGCCTGTGATGCCCA  
 TGCCCCAAAGACTGTGTGCTCAGCACATGGTCTACGTGGTCTCTGCTCACACACCTGCTCAGGGAAAA  
 CGACAGAAGGGAAACAGATACGAGCAGCATCCATTCTGGCCTATGCGGGTGAAGAAGGTGGAATTCGCTG  
 TCCAAATAGCAGTGCTTTGCAAGAAGTACGAAGCTGTAATGAGCATCCTTGCACAGTGTACCACTGGCAA  
 ACTGGTCCCTGGGGCCAGTGCATTGAGGACACCTCAGTATCGTCCCTTCAACACAACCTACGACTTGGAAATG  
 GGGAGGCCTCCTGCTCTGTGCGCATGCAGACAAGAAAAGTCATCTGTGTGCGAGTCAATGTGGGCCAAGT  
 GGGACCCAAAAATGTCCTGAAAGCCTTCGACCTGAAACTGTAAGGCCTGTCTGCTTCTTGTAAAGAAG  
 GACTGTATTGTGACCCCATATAGTGACTGGACATCATGCCCTCTTCGTGTAAGAAGGGGACTCCAGTA  
 TCAGGAAGCAGTCTAGGCATCGGGTCATCATTAGCTGCCAGCCAACGGGGCCGAGACTGCACAGATCC  
 CCTCTATGAAGAGAAGGCCTGTGAGGCACCTCAAGCGTGCCAAAGCTACAGGTGGAAGACTCACAAATGG  
 CGCAGATGCCAATTAGTCCCTTGGAGCGTGCAACAAGACAGCCCTGGAGCACAGGAAGGCTGTGGCCCTG  
 GCGCAGAGCAAGAGCCATTACTTGTGCAAGCAAGATGGAGGACAGGCTGGAATCCATGAGTGCCTACA  
 GTATGCAGGCCCTGTGCCAGCCCTTACCAGGCCCTGCCAGATCCCCTGCCAGGATGACTGTCAATTGACC  
 AGCTGGTCCAAGTTTTCTCATGCAATGGAGACTGTGGTGCAGTTAGGACCAGAAAGCGCACTCTTGTTG  
 GAAAAAGTAAAAAGAAGGAAAAATGAAAAATCCCATTTGTATCCCCTGATTGAGACTCAGTATTGTCC  
 TTGTGACAAATATAATGCACAACCTGTGGGAACTGGTCAGACTGATTTTACCAGAGGGAAAAAGTGGA  
 GTGTTGCTGGGAATGAAAGTACAAGGAGACATCAAGGAATGCGGACAAGGATATCGTTACCAAGCAATGG  
 CATGCTACGATCAAAATGGCAGGCTTGTGGAACATCTAGATGTAAACAGCCATGGTTACATTGAGGAGGC  
 CTGCATCATCCCCTGCCCTCAGACTGCAAGCTCAGTGAGTGGTCCAACCTGGTCGCGCTGCAGCAAGTCC  
 TGTGGAGTGGTGTGAAGGTTCTGTTCTAAATGGCTGCGTGA AAAACCATATAATGGAGGAAGGCCTTGCC  
 CCAAAGTGGACCATGTCAACAGGCACAGGTGTATGAGGTTGTCCCATGCCACAGTGTACCAACAGTA  
 CCTATGGGTACAGAGCCCTGGAGCATCTGCAAGGTGACCTTTGTGAATATGCGGGAGAAGTGTGGAGAG  
 GGCGTGCAAAACCCGAAAAGTGAGATGCATGCAGAAACAGCAGATGGCCCTTCTGAACATGTAGAGGATT  
 ACCTCTGTGACCCAGAAGAGATGCCCTGGGCTCTAGAGTGTGCAAAATACCATGCCCTGAGGACTGTGT  
 GATATCTGAATGGGGTCCATGGACCAATGTGTTTTGCCTTGCAATCAAAGCAGTTTCCGGCAAAGGTCA  
 GCTGATCCCATCAGACAACCAGCTGATGAAGGAAGATCTTGCCCTAATGCTGTTGAGAAAGAACCCCTGTA  
 ACCTGAACAAAACTGCTACCACTATGATTATAATGTAACAGACTGGAGTACATGTCAGCTGAGTGAGAA  
 GGCAGTTTGTGGAATGGAATAAAAACAAGGATGTTGGATTGTGTTGCAAGTGTGGCAAGTCAAGTTGAC  
 CTGAAATATTGTGAAGCGCTTGGCTTGGAGAAGAACTGGCAGATGAACACGTCTGCATGGTGGAAATGCC  
 CTGTGAACTGTCAGCTTTCTGATTGGTCTCCTTGGTGCAGAAATGTTCTCAAACATGTGGCCTCACAGGAAA  
 AATGATCCGAAGACGAACAGTGACCCAGCCCTTCAAGGTGATGGAAGACCATGCCCTTCCCTGATGGAC  
 CAGTCCAAACCTGCCAGTGAAGCCTTGTATCGGTGGCAATATGGCCAGTGGTCTCCATGCCAAGTGC  
 AGGAGGCCAGTGTGGAGAAGGGACCAGAAACAAGGAACATTTCTGTGTAGTAAGTGTGGGTGAGCTGA  
 TGATTTAGCAAAAGTGGTGGATGAGGAATCTGTGCTGACATTGAACTCATTATAGATGGTAATAAAAAAT  
 ATGTTCTGGAGGAATCCTGCAGCCAGCCTTGCCAGGTGACTGTTATTTGAAGGACTGGTCTTCCCTGGA  
 CCCTGTGTCAGCTGACCTGTGTGAATGGTGGAGATCTAGGCTTTGGTGGAAATACAGGTGAGTCCAGACC  
 GGTGATTATACAAGAACTAGAGAATCAGCATCTGTGCCAGAGCAGATGTTAGAAACAAAATCATGTTAT  
 GATGGACAGTGCTATGAATATAAATGGATGGCCAGTGCTTGAAGGGCTCTTCCCGAACAGTGTGGTGTG  
 AAAGGTGAGTGGTATAAATGTAACAGGGGGCTGCTTGGTGTGAGCCAGCCTGATGCCAGAGGTCTTG  
 TAACCCACCGTGTAGTCAACCCCACTCGTACTGTAGCGAGACAAAAACATGCCATTGTGAAGAAGGGTAC  
 ACTGAAGTCAATGCTTCTAACAGCACCTTGTAGCAATGCACACTTATCCCCTGGTGGTATTACCCACCA  
 TGGAGGACAAAAGAGGAGATGTGAAAACAGTGGGCTGTACATCCAACCCAACCCCTCCAGTAACCCAGC  
 AGGACGGGAAGGACCTGGTTTCTACAGCCATTTGGGCCAGATGGGAGACTAAAGACCTGGGTTTACGGT  
 GTAGCAGCTGGGCATTTGTGTTACTCATCTTTATTGTCTCCATGATTTATCTAGCTTGAAAAAGCCAA  
 AGAAACCCCAAAGAAGGCAAAACAACCGACTGAAACCTTTAACCTTAGCCTATGATGGAGATGCCGACAT  
 G

AGCGGACCGACGCGTACGCGGCCGCTCGAGCAGAAAACCTCATCTCAGAAGAGGATCTGGCAGCAAATGATATCC  
 TGGATTACAAGGATGACGACGATAAGGTTTAA

**Protein Sequence:** >RC213616 representing NM\_015204  
 Red=Cloning site Green=Tags(s)

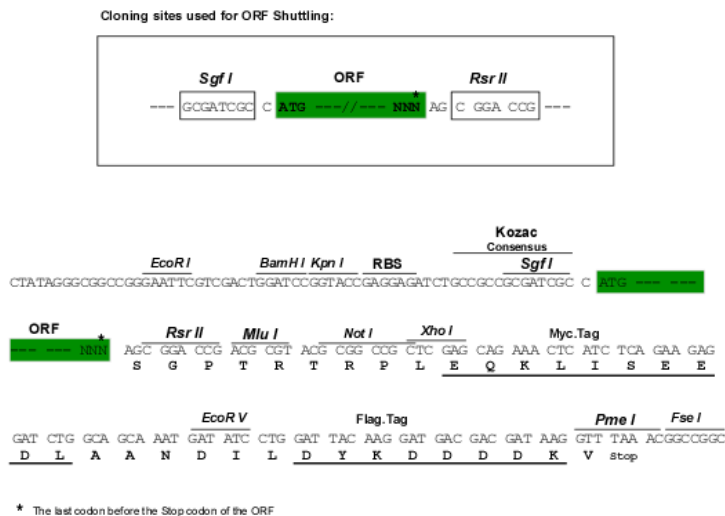
MGLQARRWASGSRGAAGPRRGVLQLLPLPLPLLLLLLLRPGAGRAAAQGEAEPTLYLWKTGPWGRCM  
 GDECGGGIQTTRAVWCAHVEGWTLHTNCKQAERPNNQNCFKVCDWHKELYDWRLGPWNQCQPVISKSL  
 EKPLECIKGEEGIQVREIACIQKDKDIPAEDIICEYFEPKPLLEQAQLIPCQQDCIVSEFSAWSECSKTC  
 GSSLQHRTRHVVAPPQFGGSGCPNLTEFQVCQSSPCEAEELRYSLVHVGWSTCSMPHSRQVRQARRRGM  
 KEREKDRSKGVKDPEARELIKRRNRNRQNRQENKYWDIYQIGYQTRVEMCINKTGKAADLSFCQQEKLP  
 TFQSCVITKECQVSEWSEWSPCKTCHDMVSPAGTRVTRTIRQFPVIGSEKECFEPEEKEPCLSQDGVV  
 PCATYGWRTTEWTECRVDPLLSQQDKRRGNQALCGGGIQTREYVCVANENLLSQLSTHKNKEASKPMD  
 LKLCCTGPIPNTTQLCHIPCPECEVSPWSAWGPTCYENCNDQQGKGFKLRRRIITNEPTGGSGVTGNCP  
 HLLLEAIPCEEPACYDWKAVRLGNCEPDNGKECGPGTQVQEVVCSNSDGEVDRQLCRDAIFPIPACDAP  
 CPKDCVLSTWSTWSSCSHTCSGKTEGKQIRARSILAYAGEEGGIRCPNSALQEVRSCEHPCTVYHWQ  
 TGPWGQCIEDTSVSSFNTTTTWNGEASCSVMQTRKVICVRVNVGQVGPKKCPESLRPETVRPCLLPCKK  
 DCIVTPYSDWTSPPSSCKEGDSSIRKQSRHRVILQLPANGGRDCDPL YEEKACEAPQACQSYRWKTHKW  
 RRQQLVPWSVQDSPAQEGCGPGRQARAITCRKQDGGQAGIHECLQYAGPVPALTQACQIPCQDDCQLT  
 SWSKFSNCGDCCGAVRTRKRTL VGSKKKKECKNSHLYPLIETQYPCDKYNAQPVGNWSDCILPEGKVE  
 VLLGMKVQGDIKECGQGYRYQAMACYDQNGRLVETSRCNSHGYYIEACIIPCPSDCKLSEWNSWRSKSKS  
 CGSGVKVRSKWLREKPYNGGRPCPKLDHVNQAQVYEVVPCHSDCNQYLWVTEPWSICKVTFVNMRENCGE  
 GVQTRKVRMONTADGPSEHVEDYLCDPEEMPLGSRVCKLPCPEDCVISEWGPWTQCVLPCNQSSFRQRS  
 ADPIRQPADEGRSCPNAVEKEPCNLNKNKYHYDYNVTDWSTCQLSEKAVCGNGIKTRMLDCVRSDDGKSD  
 LKYCEALGLEKNWQMNTSCMVECPVNCQLSDWSPWSECSQTCGLTGKMI RRRRTVTQPFQDGRPCPSLMD  
 QSKPCPVKPCYRWQYQWSPCQVQEAQC GEGTRTRNISCVVSDGSADDFSKVVD EEF CADIELIIDGNKN  
 MVLEESCSQPCPGDCYLKDWSSWSLQCLTCVNGEDLFGGGIQVRSRPVILIQELENQHLCPQMLETKSCY  
 DGQCYEYKWMASAWKGSRTVWCQRSDGINVTGGCLVMSQPDADRSCNPPCSQPHSYCSETKTCHCEEY  
 TEVMSNSTLEQCTLIPVVVLPMTEDKRGVKT SRAVHPTQPSSNPAGRGRTWFLQFPGDGRLLKTWVY  
 VAAGAFVLLIFIVSMIYLACKPKPKPQRRQNNRLKPLTLAYDGDADM

SGP TRRRLEQKLI SEEDLAANDILDYKDDDDKV

**Chromatograms:** [https://cdn.origene.com/chromatograms/mk8009\\_c02.zip](https://cdn.origene.com/chromatograms/mk8009_c02.zip)

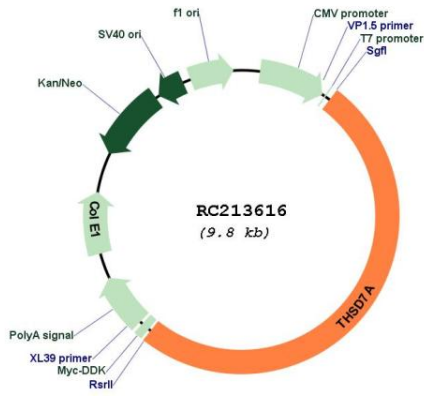
**Restriction Sites:** SgfI-RsrII

**Cloning Scheme:**

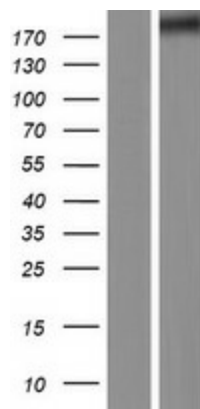


ACCN:	NM_015204
ORF Size:	4971 bp
OTI Disclaimer:	The molecular sequence of this clone aligns with the gene accession number as a point of reference only. However, individual transcript sequences of the same gene can differ through naturally occurring variations (e.g. polymorphisms), each with its own valid existence. This clone is substantially in agreement with the reference, but a complete review of all prevailing variants is recommended prior to use. <a href="#">More info</a>
OTI Annotation:	This clone was engineered to express the complete ORF with an expression tag. Expression varies depending on the nature of the gene.
Components:	The ORF clone is ion-exchange column purified and shipped in a 2D barcoded Matrix tube containing 10ug of transfection-ready, dried plasmid DNA (reconstitute with 100 ul of water).
Reconstitution Method:	<ol style="list-style-type: none"><li>1. Centrifuge at 5,000xg for 5min.</li><li>2. Carefully open the tube and add 100ul of sterile water to dissolve the DNA.</li><li>3. Close the tube and incubate for 10 minutes at room temperature.</li><li>4. Briefly vortex the tube and then do a quick spin (less than 5000xg) to concentrate the liquid at the bottom.</li><li>5. Store the suspended plasmid at -20°C. The DNA is stable for at least one year from date of shipping when stored at -20°C.</li></ol>
RefSeq:	<a href="#">NM_015204.3</a>
RefSeq Size:	6487 bp
RefSeq ORF:	4974 bp
Locus ID:	221981
UniProt ID:	<a href="#">Q9UPZ6</a>
Cytogenetics:	7p21.3
Protein Families:	Transmembrane
MW:	185.2 kDa
Gene Summary:	The protein encoded by this gene is found almost exclusively in endothelial cells from placenta and umbilical cord. The encoded protein appears to interact with alpha(V)beta(3) integrin and paxillin to inhibit endothelial cell migration and tube formation. This protein may be involved in cytoskeletal organization. Variations in this gene may be associated with low bone mineral density in osteoporosis. [provided by RefSeq, Aug 2010]

Product images:



Circular map for RC213616



Western blot validation of overexpression lysate (Cat# [LY414726]) using anti-DDK antibody (Cat# [TA50011-100]). Left: Cell lysates from untransfected HEK293T cells; Right: Cell lysates from HEK293T cells transfected with RC213616 using transfection reagent MegaTran 2.0 (Cat# [TT210002]).