

Product datasheet for **RC213612**

GLB1L (NM_024506) Human Tagged ORF Clone

Product data:

Product Type:	Expression Plasmids
Product Name:	GLB1L (NM_024506) Human Tagged ORF Clone
Tag:	Myc-DDK
Symbol:	GLB1L
Mammalian Cell Selection:	Neomycin
Vector:	pCMV6-Entry (PS100001)
E. coli Selection:	Kanamycin (25 ug/mL)



[View online »](#)

ORF Nucleotide
Sequence:

>RC213612 representing NM_024506
Red=Cloning site Blue=ORF Green=Tags(s)

TTTTGTAATACGACTCACTATAGGGCGGCCGGAATTCGTCGACTGGATCCGGTACCGAGGAGATCTGCC
GCC**CGGATCGCC**

ATGGCTCCAAGAAGCTGTCCTGCCTTCGTTCCCTGCTGCTGCCGCTCAGCCTGACGCTACTGCTGCCCC
AGGCAGACACTCGGTCGTTTCGTAGTGGATAGGGGTCATGACCGGTTTCTCCTAGACGGGGCCCCGTTCCG
CTATGTGTCTGGCAGCCTGCACTACTTTTCGGGTACCGCGGGTGTCTTGGGCCGACCGGCTTTTGAAGATG
CGATGGAGCGGCCTCAACGCCATACAGTTTTATGTGCCCTGGAACACCACGAGCCACAGCCTGGGGTCT
ATAACTTTAATGGCAGCCGGGACCTCATTGCCTTTCTGAATGAGGCAGCTCTAGCGAACCTGTTGGTCAT
ACTGAGACCAGGACCTTACATCTGTGCAGAGTGGGAGATGGGGGTCTCCCATCTGGTTGCTTCGAAAA
CCTGAAATTCATCTAAGAACCTCAGATCCAGACTTCCTTGCCGAGTGGACTCCTGGTTCAAGGTCTTGC
TGCCCAAGATATATCCATGGCTTTATCACAATGGGGCAACATCATTAGCATTAGGTGGAGAATGAATA
TGGTAGCTACAGAGCCTGTGACTTCAGTACATGAGGCACCTGGCTGGGCTCTTCCGTGCACTGCTAGGA
GAAAAGATCTTGCTCTTACCACAGATGGGCCTGAAGGACTCAAGTGTGGCTCCCTCCGGGGACTCTATA
CCACTGTAGATTTTGGCCAGCTGACAACATGACCAAAATCTTTACCCTGCTTCGGAAGTATGAACCCCA
TGGGCCATTGGTAAACTCTGAGTACTACACAGGCTGGCTGGATTACTGGGGCCAGAATCACTCCACACGG
TCTGTGTGCTGAGTGAACCAAGGACTAGAGAACATGCTCAAGTTGGGAGCCAGTGTGAACATGTACATGT
TCCATGGAGGTACCAACTTTGGATATTGGAATGGTGCCGATAAGAAGGGACGCTTCTTCCGATTACTAC
CAGCTATGACTATGATGCACCTATATCTGAAGCAGGGGACCCACACCTAAGCTTTTTGCTTTCGAGAT
GTCATCAGCAAGTCCAGGAAGTTCCTTGGGACCTTACCTCCCCGAGCCCAAGATGATGCTTGGAC
CTGTGACTCTGCACCTGGTTGGCATTACTGGCTTTCCTAGACTTGCTTTGCCCCGTGGGCCATTCA
TTCAATCTTGCCAATGACCTTTGAGGCTGTCAAGCAGGACCATGGCTTCATGTTGTACCGAACCTATATG
ACCCATACCATTTTGGCCAAACACCATTCTGGGTGCCAAATAATGGAGTCCATGACCGTGCCTATGTGA
TGGTGGATGGGGTGTCCAGGGTGTGGAGCGAAATATGAGAGACAAACTATTTTTGACGGGGAAACT
GGGGTCCAAACTGGATATCTTGGTGGAGAACATGGGGAGGCTCAGCTTTGGGTCTAACAGCAGTACTTC
AAGGGCCTGTGAAGCCACCAATTCTGGGGCAAACAATCCTTACCAGTGGATGATGTTCCCTCTGAAAA
TTGATAACCTTGTGAAGTGGTGGTTTCCCTCCAGTTGCCAAAATGGCCATATCCTCAAGCTCCTCTGG
CCCCACATTCTACTCCAAAACATTTCCAATTTTAGGCTCAGTTGGGGACACATTTCTATATCTACCTGGA
TGGACCAAGGGCCAAGTCTGGATCAATGGGTTAACTTGGCCGGTACTGGACAAAGCAGGGGCCACAAC
AGACCCTCTACGTGCCAAGATTCCTGCTGTTTCTAGGGGAGCCCTCAACAAAATTACATTGCTGGAAC
AGAAGATGTACCTCTCCAGCCCCAAGTCCAATTTTGGATAAGCCTATCCTCAATAGCACTAGTACTTTG
CACAGGACACATATCAATTCCCTTTCAGCTGATACACTGAGTGCCTCTGAACCAATGGAGTTAAGTGGGC
AC

ACGCGTACGCGGCCGCTCGAGCAGAAACTCATCTCAGAAGAGGATCTGGCAGCAATGATATCCTGGATT
ACAAGGATGACGACGATAAGGTTTAA

Protein Sequence: >RC213612 representing NM_024506
 Red=Cloning site Green=Tags(s)

MAPKKLSCLRSLLLPLSLTLLLQADTRSFVDRGHDRFLLDGAPFRYVSGSLHYFRVPRVLWADRLLKM
 RWSGLNAIQFYVPWNYHEPQPGVYNFNNGSRDLIAFLNEAALANLLVILRPGPYICAEWEMGGLPSWLLRK
 PEIHLRTSDPDFLAAVDSWFKVLLPKIYPWLYHNGGNIISIQVENEYGSYRACDFSYMRLAGLFRALLG
 EKILLFTTDGPEGLKCGSLRGLYTTVDFGPADNMTKIFTLRLKYEPHGPLVNSEYTTGWLDYWGQNHSTR
 SVSAVTKLENMLKLGASVNMYMFHGNTFGYWNGADKKGRFLPITTSYDYDAPISEAGDPTPKLFAALRD
 VISKFQEVPLGPLPPSPKMMLGPVTLHLVGHLLAFDILLCPRGPIHSILPMTFEAVKQDHFMLYRTYM
 THTIFEPFPFVPPNNGVHDRAYVMVDGVFQGVVERNMRDCLFLTGKLGSKLDILVENMGRSFGSNSDF
 KGLLKPPIILGQITLQWMMFPLKIDNLVKWVFLQLPKWYPQPAPSGPTFYSKTFPILGVSVDFTFLYLP
 WTKGQVWINGFNLGRYWTQGPQQLYVPRFLFPARGALNKITLLELEDVPLQPQVQFLDKPILNSTSTL
 HRTHINSLSADTLASEPMELSGH

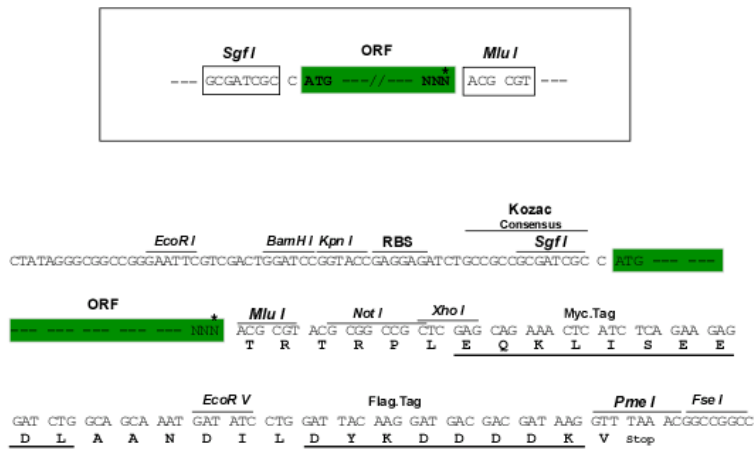
TRTRPLEQKLISEEDLAANDILDYKDDDDKV

Chromatograms: https://cdn.origene.com/chromatograms/mk8120_c07.zip

Restriction Sites: Sgfl-MluI

Cloning Scheme:

Cloning sites used for ORF Shuttling:



* The last codon before the Stop codon of the ORF

ACCN: NM_024506

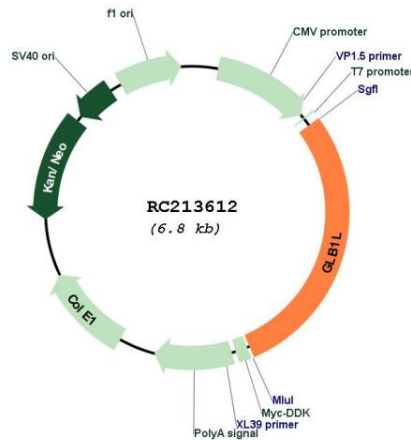
ORF Size: 1962 bp

OTI Disclaimer: The molecular sequence of this clone aligns with the gene accession number as a point of reference only. However, individual transcript sequences of the same gene can differ through naturally occurring variations (e.g. polymorphisms), each with its own valid existence. This clone is substantially in agreement with the reference, but a complete review of all prevailing variants is recommended prior to use. [More info](#)

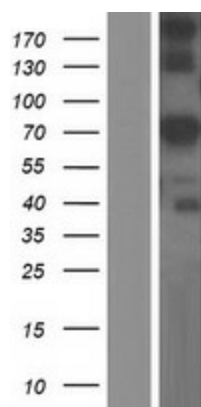
OTI Annotation: This clone was engineered to express the complete ORF with an expression tag. Expression varies depending on the nature of the gene.

- Components:** The ORF clone is ion-exchange column purified and shipped in a 2D barcoded Matrix tube containing 10ug of transfection-ready, dried plasmid DNA (reconstitute with 100 ul of water).
- Reconstitution Method:**
1. Centrifuge at 5,000xg for 5min.
 2. Carefully open the tube and add 100ul of sterile water to dissolve the DNA.
 3. Close the tube and incubate for 10 minutes at room temperature.
 4. Briefly vortex the tube and then do a quick spin (less than 5000xg) to concentrate the liquid at the bottom.
 5. Store the suspended plasmid at -20°C. The DNA is stable for at least one year from date of shipping when stored at -20°C.
- RefSeq:** [NM_024506.5](#)
- RefSeq Size:** 2698 bp
- RefSeq ORF:** 1965 bp
- Locus ID:** 79411
- UniProt ID:** [Q6UWU2](#)
- Cytogenetics:** 2q35
- Domains:** Glyco_hydro_35
- MW:** 74.6 kDa
- Gene Summary:** Probable glycosyl hydrolase.[UniProtKB/Swiss-Prot Function]

Product images:



Circular map for RC213612



Western blot validation of overexpression lysate (Cat# [LY411252]) using anti-DDK antibody (Cat# [TA50011-100]). Left: Cell lysates from untransfected HEK293T cells; Right: Cell lysates from HEK293T cells transfected with RC213612 using transfection reagent MegaTran 2.0 (Cat# [TT210002]).