

Product datasheet for **RC213609**

CILK1 (NM_014920) Human Tagged ORF Clone

Product data:

Product Type:	Expression Plasmids
Product Name:	CILK1 (NM_014920) Human Tagged ORF Clone
Tag:	Myc-DDK
Symbol:	CILK1
Synonyms:	ECO; EJM10; hICK; ICK; LCK2; MRK
Mammalian Cell Selection:	Neomycin
Vector:	pCMV6-Entry (PS100001)
E. coli Selection:	Kanamycin (25 ug/mL)



[View online »](#)

ORF Nucleotide
Sequence:

>RC213609 representing NM_014920
Red=Cloning site Blue=ORF Green=Tags(s)

TTTTGTAATACGACTCACTATAGGGCGGCCGGGAATTCGTCGACTGGATCCGGTACCGAGGAGATCTGCC
GCCCGCATCGCC

ATGAATAGATACACAACAATCAGGCAGCTCGGGATGGAACCTACGGTCCGTCCTGCTGGGAAGAAGCA
TTGAGTCTGGGGAGCTGATCGCTATTAATAAAGAAATGAAAAGAAAATTTTATTCTGGGAGGAATGCATGAA
CCTTCGGGAGGTTAAGTCTTTAAAGAAGCTCAACCATGCCAATGTAGTCAAATTAAGAAGTTATCAGG
GAAAATGATCATCTTTATTTTATCTTCGAGTACATGAAGGAAAATCTTTACCAGCTCATTAAAGAGAGAA
ATAAGTTGTTTCTGAGTCTGCTATAAGGAATATCATGTATCAGATATTACAAGGACTCGCATTTATTCA
CAAACACGGCTTCTTTCATCGAGACTTAAAGCCTGAGAACCTCCTCTGCATGGGACCAGAAGCTTGTGAAA
ATTGCAGACTTTGGTTTGGCCCGAGAAAATACGATCAAAACCTCCATATACAGATTATGTATCTACCAGAT
GGTACAGGGCTCCAGAAGTACTCCTGAGGTCTACCAACTACAGCTCCCCATTGACGTCTGGGCGGTGGG
CTGCATCATGGCAGAAGTTTACACCCTCAGGCCACTCTTCCCTGGAGCCAGTGAAATTGACACAATATTC
AAAATTTGCCAAGTGCTGGGGACACAAAAAAGACTGACTGGCCTGAAGGCTATCAACTTCAAGTGCAA
TGAAGTCCGTTGGCCACAGTGTGTACCAATAACTTAAAGACCTTGATTCCCAATGCTAGCAGTGAAGC
AGTCCAGCTCCTGAGAGACATGCTTCAGTGGGATCCCAAGAAAACGACCAACAGCTAGTCAGGCACTTCGA
TATCCTTACTTCCAAGTTGGACACCCACTAGGCAGCACCACAAAAACCTTCAGGATTCAGAAAAACCCAC
AGAAAGGCATCCTGAAAAGGCAGGCCACCTCCTTATATTAAGCCAGTCCCACCTGCCAGCCACCAGC
CAAGCCACACACGAATTTCTTCAGCAGCATCAAGCCAGCCAGCCCCCTCTGCATCTCACGTACCCC
TACAAAGCAGAGGTCTCCAGGACAGATCACCAAGCCATCTCCAGGAGGACAAGCCAAGCCCGTTGCTTT
TCCCATCCCTCCACAACAAGCATCCACAGTCGAAAATCACAGCTGGCCTGGAGCACAAAAATGGTGAGAT
AAAGCCAAAGAGTAGGAGAAGGTGGGTCTTATTTCCAGGTCAACAAAGGATTCAGATGATTGGGCTGAC
TTGGATGACTTGATTTCACTCCCTCAGCAGGATTGACCTGAAAAACAAGAAAAGACAGAGTGATG
ACACTCTCTGCAGGTTTGGAGTGTGGGACCTGAAGCCCTCTGAGCCTGTGGGCACAGGAAAACAGTGC
CCCCACCAGACGTCATATCAGCGGCGAGACACGCCACCCTGAGATCTGCAGCCAAGCAGCACTATTTG
AAGCACTCTCGATACTTGCTGGGATCAGTATAAGAAATGGCATACTCTCGAATCCAGGCAAGGAATTTA
TTCCACCTAATCCATGGTCTAGTCTGGCTTGTCTGGAAAATCTTCAGGGACAATGTCAGTAATCAGCAA
AGTAAATTCAGTTGGTTCCAGCTCTACAAGTTCTAGTGGACTGACTGAAAATATGTCCCTTCTTTCTG
AAAAAAGAAATCGTTTCTGCTATGCAGAGGGTACACCTAGCACCTATTCCAGACCCTTCCCCTGGTTATT
CCTCCCTGAAGGCCATGAGACCTCATCCTGGGCGACCATTCTTCCACACCCAGCCTAGAAGCACTCCTGG
GTTGATACCACGGCTCCAGCCGCCAGCCAGTGCATGGCCGGACAGACTGGGCTTCCAAGTACGCATCT
CGGCGA

ACGCGTACGCGGCCGCTCGAGCAGAAACTCATCTCAGAAGAGGATCTGGCAGCAAATGATATCCTGGATT
ACAAGGATGACGACGATAAGGTTTAA

Protein Sequence: >RC213609 representing NM_014920
Red=Cloning site Green=Tags(s)

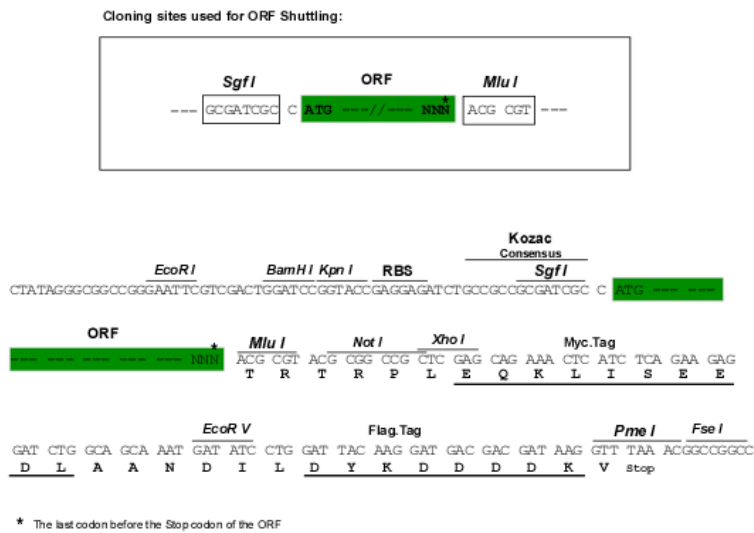
```
MNRYTTIRQLGDGTYGSVLLGRSIESGELIAIKKMKRKFYSWEECMNLREVKSLKKNHANVVKLKEVIR
ENDHLYFIFEYMKENLYQLIKERNKLPESAIRNIMYQILQGLAFIHKHGFHFDLKPENLLCMGPPELVK
IADFGlareIRSKPPYTDYVSTRWYRAPEVLLRSTNYSSPIDVWAVGCIMAEVYTLRPLFPGASEIDTIF
KICQVLGTPKKTDWPEGYQLSSAMNFRWPQCVPNNLKTLPNASSEAVQLLRDMLQWDPKKRPTASQALR
YPYFQVGHPLGSTTQNLQDSEKPKGILEKAGPPYIKPVPPAQPAPKPHTRISSRQHQASQPPLHLTYP
YKAEVSRDHPSHLQEDKPSPLLFPSLHNKHPQSKITAGLEHKNGEIKPKSRRRWGLISRSTKSDDDWAD
LDDLDFSPSLSRIDLKNNKRQSDDTLCRFESVLDLKPSEPVTGNSAPTQTSYQRRDPTLRSAAKQHYL
KHSRYLPGISIRNGILSNPGKEFIPNPWSSSGLSGKSSGTMSVISKVNSVGSSTSSSGLTGNVYPSFL
KKEIGSAMQRVHLAIPDPSPGYSSLKAMRPHGPRFFHTQPRSTPGLIPRPPAAQPVHGRTDWASKYAS
RR
```

TRTRPLEQKLISEEDLAANDILDYKDDDDKV

Chromatograms: https://cdn.origene.com/chromatograms/mg3193_f05.zip

Restriction Sites: SgfI-MluI

Cloning Scheme:



ACCN: NM_014920

ORF Size: 1896 bp

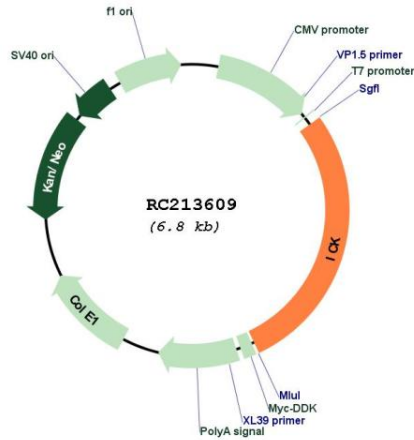
OTI Disclaimer: The molecular sequence of this clone aligns with the gene accession number as a point of reference only. However, individual transcript sequences of the same gene can differ through naturally occurring variations (e.g. polymorphisms), each with its own valid existence. This clone is substantially in agreement with the reference, but a complete review of all prevailing variants is recommended prior to use. [More info](#)

OTI Annotation: This clone was engineered to express the complete ORF with an expression tag. Expression varies depending on the nature of the gene.

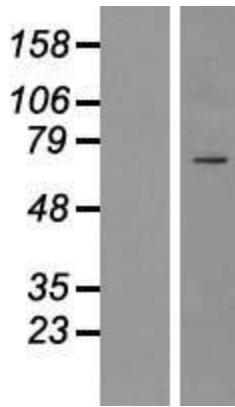
Components: The ORF clone is ion-exchange column purified and shipped in a 2D barcoded Matrix tube containing 10ug of transfection-ready, dried plasmid DNA (reconstitute with 100 ul of water).

Reconstitution Method:	<ol style="list-style-type: none">1. Centrifuge at 5,000xg for 5min.2. Carefully open the tube and add 100ul of sterile water to dissolve the DNA.3. Close the tube and incubate for 10 minutes at room temperature.4. Briefly vortex the tube and then do a quick spin (less than 5000xg) to concentrate the liquid at the bottom.5. Store the suspended plasmid at -20°C. The DNA is stable for at least one year from date of shipping when stored at -20°C.
Note:	Plasmids are not sterile. For experiments where strict sterility is required, filtration with 0.22um filter is required.
RefSeq:	NM_014920.5
RefSeq Size:	6095 bp
RefSeq ORF:	1899 bp
Locus ID:	22858
UniProt ID:	Q9UPZ9
Cytogenetics:	6p12.1
Protein Families:	Druggable Genome, Protein Kinase
MW:	71.2 kDa
Gene Summary:	Eukaryotic protein kinases are enzymes that belong to a very extensive family of proteins which share a conserved catalytic core common with both serine/threonine and tyrosine protein kinases. This gene encodes an intestinal serine/threonine kinase harboring a dual phosphorylation site found in mitogen-activating protein (MAP) kinases. The protein localizes to the intestinal crypt region and is thought to be important in intestinal epithelial cell proliferation and differentiation. Alternative splicing has been observed at this locus and two variants, encoding the same isoform, have been identified. [provided by RefSeq, Jul 2008]

Product images:



Circular map for RC213609



Western blot validation of overexpression lysate (Cat# [LY413950]) using anti-DDK antibody (Cat# [TA50011-100]). Left: Cell lysates from untransfected HEK293T cells; Right: Cell lysates from HEK293T cells transfected with [RC216454] using transfection reagent MegaTran 2.0 (Cat# [TT210002]).