

Product datasheet for RC213607

Asialoglycoprotein Receptor 2 (ASGR2) (NM_001181) Human Tagged ORF Clone

Product data:

Product Type:	Expression Plasmids
Product Name:	Asialoglycoprotein Receptor 2 (ASGR2) (NM_001181) Human Tagged ORF Clone
Tag:	Myc-DDK
Symbol:	ASGR2
Synonyms:	ASGP-R2; ASGPR2; CLEC4H2; HBXBP; HL-2
Mammalian Cell Selection:	Neomycin
Vector:	pCMV6-Entry (PS100001)
E. coli Selection:	Kanamycin (25 ug/mL)
ORF Nucleotide Sequence:	>RC213607 representing NM_001181 Red=Cloning site Blue=ORF Green=Tags(s)

TTTTGTAATACGACTCACTATAGGGCGGCCGGAATTCGTCGACTGGATCCGGTACCGAGGAGATCTGCC
GCC**CGATCGCC**

ATGGCCAAGGACTTTCAAGATATCCAGCAGCTGAGCTCGGAGGAAAATGACCATCCTTTCCATCAAGGTG
AGGGGCCAGGCACTCGCAGGCTGAATCCCAGGAGAGGAAATCCATTTTTGAAAGGGCCACCTCCTGCCCA
GCCCTGGCACAGCGTCTCTGCTCCATGGTCTGCTTCAGTCTGCTTGCCCTGAGCTTCAACATCCTGCTG
CTGGTGGTCATCTGTGTGACTGGGTCCCAAAGTGAGGGTCACAGAGGTGCACAGCTGCAAGCCGAGCTGC
GGAGCCTGAAGGAAGCTTTCAGCAACTTCTCCTCGAGCACCTGACGGAGGTCCAGGCAATCAGCACCCA
CGGAGGCAGCGTGGGTGACAAGATCACATCCCTAGGAGCCAAGCTGGAGAAACAGCAGCAGGACCTGAAA
GCAGATCACGATGCCCTGCTCTTCCATCTGAAGCACTTCCCCGTGGACCTGCGCTTCGTGGCCTGCCAGA
TGGAGCTCCTCCACAGCAACGGCTCCCAAAGGACCTGCTGCCCGTCAACTGGGTGGAGCACCAAGGCGAG
CTGCTACTGGTTCTCTCACTCCGGGAAGGCTGGGCTGAGGCGGAGAAGTACTGCCAGCTGGAGAACGCA
CACCTTGTGGTCATCAACTCCTGGGAGGAGCAGAAATTCATTGTACAACACACGAACCCCTTCAATACCT
GGATAGGTCTCACGGACAGTGATGGCTCTTGAAAATGGGTGGATGGCACAGACTATAGGCACAACATAAA
GAACTGGGCTGTCACTCAGCCAGATAATTGGCACGGGCACGAGCTGGGTGGAAGTGAAGACTGTGTTGAA
GTCCAGCCGGATGGCCGCTGGAACGATGACTTCTGCCTGCAGGTGTACCGCTGGGTGTGTGAGAAAAGGC
GGAATGCCACCGCGAGGTGGCC

ACGCGTACGCGGCCGCTCGAGCAGAAACTCATCTCAGAAGAGGATCTGGCAGCAAATGATATCCTGGATT
ACAAGGATGACGACGATAAGGTTTAA



[View online »](#)

Protein Sequence: >RC213607 representing NM_001181
 Red=Cloning site Green=Tags(s)

MAKDFQDIQQLSSEENDHPFHQEGPGTRRLNPRRGNPFLKGGPPAQPLAQRLCMVCFSLLALSFNILL
 LVVICVTGSQSEGHRAQLQAE LRSLKEAFSNFSSSTL TEVQAI STHGGSVGDKITSLGAKLEKQQDLK
 ADHDALLFHLKHFPVDLRFVACQMELLSHNSGSRQTCCPVNWEHQGSCYWF SHSGKAWAEAEKYCQLENA
 HLVVINSWEEQKFIVQHTNPFNTWIGL TSDSGSWKWVDGTDYRHNYKNWAVTQPDNWHGHELGGSEDCVE
 VQPDGRWNDDFCLQVYRWVCEKRRRNATGEVA

TRTRPLEQKLISEEDLAANDILDYKDDDDKV

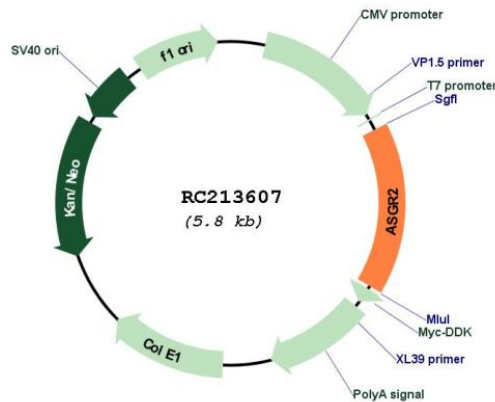
Chromatograms: https://cdn.origene.com/chromatograms/mg3427_e08.zip

Restriction Sites: SgfI-MluI

Cloning Scheme:

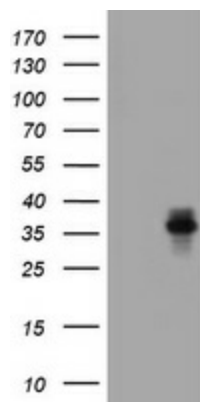


Plasmid Map:

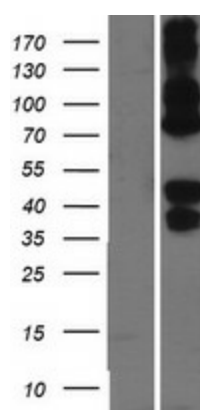


ACCN: NM_001181

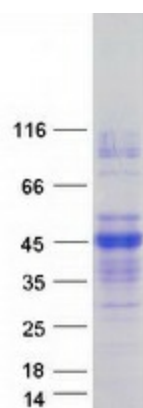
ORF Size:	933 bp
OTI Disclaimer:	The molecular sequence of this clone aligns with the gene accession number as a point of reference only. However, individual transcript sequences of the same gene can differ through naturally occurring variations (e.g. polymorphisms), each with its own valid existence. This clone is substantially in agreement with the reference, but a complete review of all prevailing variants is recommended prior to use. More info
OTI Annotation:	This clone was engineered to express the complete ORF with an expression tag. Expression varies depending on the nature of the gene.
Components:	The ORF clone is ion-exchange column purified and shipped in a 2D barcoded Matrix tube containing 10ug of transfection-ready, dried plasmid DNA (reconstitute with 100 ul of water).
Reconstitution Method:	<ol style="list-style-type: none">1. Centrifuge at 5,000xg for 5min.2. Carefully open the tube and add 100ul of sterile water to dissolve the DNA.3. Close the tube and incubate for 10 minutes at room temperature.4. Briefly vortex the tube and then do a quick spin (less than 5000xg) to concentrate the liquid at the bottom.5. Store the suspended plasmid at -20°C. The DNA is stable for at least one year from date of shipping when stored at -20°C.
RefSeq:	NM_001181.4
RefSeq Size:	1405 bp
RefSeq ORF:	936 bp
Locus ID:	433
UniProt ID:	P07307
Cytogenetics:	17p13.1
Domains:	CLECT, lectin_N
Protein Families:	Druggable Genome, Transmembrane
MW:	35 kDa
Gene Summary:	This gene encodes a subunit of the asialoglycoprotein receptor. This receptor is a transmembrane protein that plays a critical role in serum glycoprotein homeostasis by mediating the endocytosis and lysosomal degradation of glycoproteins with exposed terminal galactose or N-acetylgalactosamine residues. The asialoglycoprotein receptor may facilitate hepatic infection by multiple viruses including hepatitis B, and is also a target for liver-specific drug delivery. The asialoglycoprotein receptor is a hetero-oligomeric protein composed of major and minor subunits, which are encoded by different genes. The protein encoded by this gene is the less abundant minor subunit. Alternatively spliced transcript variants encoding multiple isoforms have been observed for this gene. [provided by RefSeq, Jan 2011]

Product images:


HEK293T cells were transfected with the pCMV6-ENTRY control (Cat# [PS100001], Left lane) or pCMV6-ENTRY ASGR2 (Cat# RC213607, Right lane) cDNA for 48 hrs and lysed. Equivalent amounts of cell lysates (5 ug per lane) were separated by SDS-PAGE and immunoblotted with anti-ASGR2 (Cat# [TA505099]). Positive lysates [LY420082] (100ug) and [LC420082] (20ug) can be purchased separately from OriGene.



Western blot validation of overexpression lysate (Cat# [LY408999]) using anti-DDK antibody (Cat# [TA50011-100]). Left: Cell lysates from untransfected HEK293T cells; Right: Cell lysates from HEK293T cells transfected with [RC218606] using transfection reagent MegaTran 2.0 (Cat# [TT210002]).



Coomassie blue staining of purified ASGR2 protein (Cat# [TP313607]). The protein was produced from HEK293T cells transfected with ASGR2 cDNA clone (Cat# RC213607) using MegaTran 2.0 (Cat# [TT210002]).