

Product datasheet for RC213598L1

GPR102 (TAAR8) (NM_053278) Human Tagged Lenti ORF Clone

Product data:

Product Type:	Expression Plasmids
Product Name:	GPR102 (TAAR8) (NM_053278) Human Tagged Lenti ORF Clone
Tag:	Myc-DDK
Symbol:	GPR102
Synonyms:	GPR102; TA5; TaR-5; TaR-8; TAR5; TRAR5
Mammalian Cell Selection:	None
Vector:	pLenti-C-Myc-DDK (PS100064)
E. coli Selection:	Chloramphenicol (34 ug/mL)
ORF Nucleotide Sequence:	The ORF insert of this clone is exactly the same as(RC213598).
Restriction Sites:	SgfI-MluI
Cloning Scheme:	

Cloning sites used for ORF Shuttling:



* The last codon before the Stop codon of the ORF.

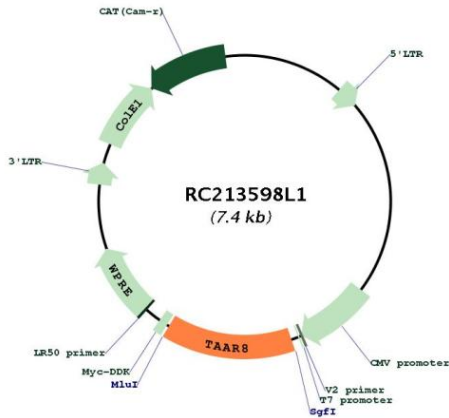
ACCN:	NM_053278
ORF Size:	1026 bp



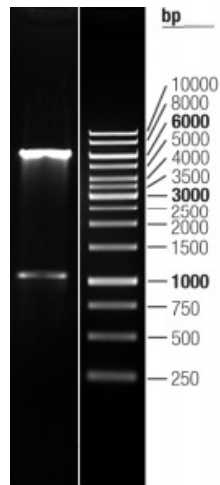
[View online >](#)

OTI Disclaimer:	The molecular sequence of this clone aligns with the gene accession number as a point of reference only. However, individual transcript sequences of the same gene can differ through naturally occurring variations (e.g. polymorphisms), each with its own valid existence. This clone is substantially in agreement with the reference, but a complete review of all prevailing variants is recommended prior to use. More info
OTI Annotation:	This clone was engineered to express the complete ORF with an expression tag. Expression varies depending on the nature of the gene.
Components:	The ORF clone is ion-exchange column purified and shipped in a 2D barcoded Matrix tube containing 10ug of transfection-ready, dried plasmid DNA (reconstitute with 100 ul of water).
Reconstitution Method:	<ol style="list-style-type: none">1. Centrifuge at 5,000xg for 5min.2. Carefully open the tube and add 100ul of sterile water to dissolve the DNA.3. Close the tube and incubate for 10 minutes at room temperature.4. Briefly vortex the tube and then do a quick spin (less than 5000xg) to concentrate the liquid at the bottom.5. Store the suspended plasmid at -20°C. The DNA is stable for at least one year from date of shipping when stored at -20°C.
RefSeq:	NM_053278.1
RefSeq Size:	1029 bp
RefSeq ORF:	1029 bp
Locus ID:	83551
UniProt ID:	Q969N4
Cytogenetics:	6q23.2
Protein Families:	Druggable Genome, GPCR, Transmembrane
Protein Pathways:	Neuroactive ligand-receptor interaction
MW:	37.8 kDa
Gene Summary:	This gene is part of the trace amine receptor cluster on chromosome 6 and encodes an orphan G-protein coupled receptor. Upregulated expression of this gene in astroglial cells upon exposure to lipopolysaccharides suggests a function for the encoded protein in the brain. [provided by RefSeq, Jul 2016]

Product images:



Circular map for RC213598L1



Double digestion of RC213598L1 using SgfI and MluI