

## Product datasheet for RC213594

### OPCML (NM\_002545) Human Tagged ORF Clone

#### Product data:

Product Type:	Expression Plasmids
Product Name:	OPCML (NM_002545) Human Tagged ORF Clone
Tag:	Myc-DDK
Symbol:	OPCML
Synonyms:	IGLON1; OBCAM; OPCM
Mammalian Cell Selection:	Neomycin
Vector:	pCMV6-Entry (PS100001)
E. coli Selection:	Kanamycin (25 ug/mL)
ORF Nucleotide Sequence:	>RC213594 ORF sequence Red=Cloning site Blue=ORF Green=Tags(s)

TTTTGTAATACGACTCACTATAGGGCGGCCGGAATTCGTCGACTGGATCCGGTACCGAGGAGATCTGCC  
GCC**CGATCGCC**

ATGGGGTCTGTGGGTACCTGTTCTGCCCTGGAAGTGCCTCGTGGTCTGTCTCTCAGGCTGCTGTTCC  
TTGTACCCACAGGAGTGCCCGTGCAGCGGAGATGCCACCTCCCCAAAGCTATGGACAACGTGACGGT  
CCGGCAGGGGAGAGCGCCACCCTCAGGTGTACCATAGATGACCGGTAACCCGGTGGCTGGCTAAAC  
CGCAGCACCATCCTCTACGCTGGGAATGACAAGTGGTCCATAGACCCTCGTGTGATCATCCTGGTCAATA  
CACCAACCCAGTACAGCATCATGATCCAAAATGTGGATGTGTATGACGAAGTCCGTACACCTGCTCTGT  
GCAGACAGACAATCATCCAAAACGTCCCGGGTTCACCTAATAGTGAAGTTCCTCCTCAGATCATGAAT  
ATCTCCTCAGACATCACTGTGAATGAGGGAAGCAGTGTGACCCTGCTGTGCTTGTCTATTGGCAGACCAG  
AGCCAACCTGTGACATGGAGACACCTGTCAGTCAAGGAAGGCCAGGGCTTTGTAAGTGAAGATGAGTACCT  
GGAGATCTCTGACATCAAGCGAGACCAGTCCGGGGAGTACGAATGCAGCGCGTTGAACGATGTCGCTGCC  
CCCGATGTGCGGAAAGTAAAAATCACTGTAACATCCTCCCTATATCTCAAAGCCAAGAACAACCTGGTG  
TTTCAGTCGGTCAGAAGGCATCCTGAGCTGTGAAGCCTGTCAGTCCCCATGGCTGAATCCAGTGGTT  
CAAGGAAGAAACCAGTTAGCCACTGGTCTGGATGGAATGAGGATTGAAAACAAAGGCCGATGTCCACT  
CTGACTTTCTTCAATGTTTCAGAAAAGGATTATGGAACTATACTTGTGTGCCACGAACAAGCTTGGGA  
ACACCAATGCCAGCATCACATTGTATGGCCTGGAGCAGTCATTGATGGTGTAAACTCGGCCCTCCAGAGC  
ACTGGCTTGTCTCTGGCTATCAGGGACCCTCTTAGCCACTTCTTCATCAAGTTT

**ACGCGT**ACGCGGCCGCTCGAGCAGAACTCATCTCAGAAGAGGATCTGGCAGCAAATGATATCCTGGATT  
ACAAGGATGACGACGATAAGGTTTAA



[View online »](#)

**Protein Sequence:** >RC213594 protein sequence  
Red=Cloning site Green=Tags(s)

MGVCGYLFLPWKCLVVVSLRLLFLVPTGVPVRSGDATFPKAMDNVTVRQGESATLRCTIDDRVTRVAWLN  
 RSTILYAGNDKWSIDPRVILVNTPTQYSIMIQNVDVYDEGPYTCVQTDNHPKTSRVHLIVQVPPQIMN  
 ISSDITVNEGSSVTLCLLAIGRPEPTVTRHLSVKEGQGFVSEDEYLEISDIKRDQSGEYECSALNDVAA  
 PDVRKVKITVNYPPYISKAKNTGVSVGQKILSCEASAVPMAEFQWFKEETRLATGLDGMRIENKGRMST  
 LTFVSEKDYGNVYTCVATNKLGNNTASITLYGPGAVIDGVNSASRALACLWLSGTLTLLAHFFIKF

TRTRPLEQKLISEEDLAANDILDYKDDDDKV

**Chromatograms:** [https://cdn.origene.com/chromatograms/mk6463\\_a06.zip](https://cdn.origene.com/chromatograms/mk6463_a06.zip)

**Restriction Sites:** SgfI-MluI

**Cloning Scheme:**



**ACCN:** NM\_002545

**ORF Size:** 1035 bp

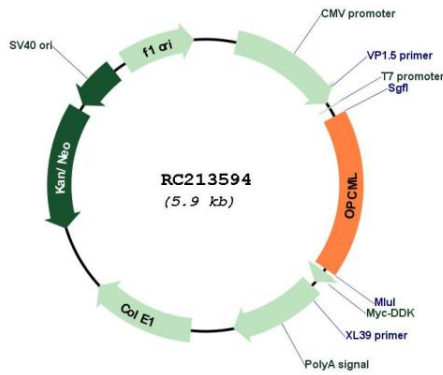
**OTI Disclaimer:** The molecular sequence of this clone aligns with the gene accession number as a point of reference only. However, individual transcript sequences of the same gene can differ through naturally occurring variations (e.g. polymorphisms), each with its own valid existence. This clone is substantially in agreement with the reference, but a complete review of all prevailing variants is recommended prior to use. [More info](#)

**OTI Annotation:** This clone was engineered to express the complete ORF with an expression tag. Expression varies depending on the nature of the gene.

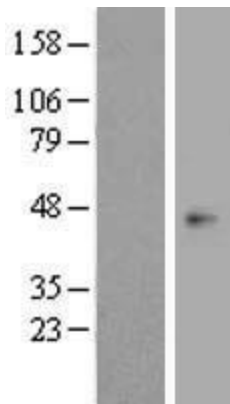
**Components:** The ORF clone is ion-exchange column purified and shipped in a 2D barcoded Matrix tube containing 10ug of transfection-ready, dried plasmid DNA (reconstitute with 100 ul of water).

<b>Reconstitution Method:</b>	<ol style="list-style-type: none"><li>1. Centrifuge at 5,000xg for 5min.</li><li>2. Carefully open the tube and add 100ul of sterile water to dissolve the DNA.</li><li>3. Close the tube and incubate for 10 minutes at room temperature.</li><li>4. Briefly vortex the tube and then do a quick spin (less than 5000xg) to concentrate the liquid at the bottom.</li><li>5. Store the suspended plasmid at -20°C. The DNA is stable for at least one year from date of shipping when stored at -20°C.</li></ol>
<b>RefSeq:</b>	<a href="#">NM_002545.4</a> , <a href="#">NP_002536.1</a>
<b>RefSeq Size:</b>	6300 bp
<b>RefSeq ORF:</b>	1038 bp
<b>Locus ID:</b>	4978
<b>UniProt ID:</b>	<a href="#">Q14982</a>
<b>Cytogenetics:</b>	11q25
<b>Domains:</b>	ig, IGc2, IG
<b>Protein Families:</b>	Druggable Genome, Transmembrane
<b>MW:</b>	38 kDa
<b>Gene Summary:</b>	<p>This gene encodes a member of the IgLON subfamily in the immunoglobulin protein superfamily of proteins. The encoded preprotein is proteolytically processed to generate the mature protein. This protein is localized in the plasma membrane and may have an accessory role in opioid receptor function. This gene has an ortholog in rat and bovine. The opioid binding-cell adhesion molecule encoded by the rat gene binds opioid alkaloids in the presence of acidic lipids, exhibits selectivity for mu ligands and acts as a GPI-anchored protein. Since the encoded protein is highly conserved in species during evolution, it may have a fundamental role in mammalian systems. Alternative splicing results in multiple transcript variants, at least one of which encodes an isoform that is proteolytically processed. [provided by RefSeq, Jan 2016]</p>

Product images:



Circular map for RC213594



Western blot validation of overexpression lysate (Cat# [LY419251]) using anti-DDK antibody (Cat# [TA50011-100]). Left: Cell lysates from untransfected HEK293T cells; Right: Cell lysates from HEK293T cells transfected with RC213594 using transfection reagent MegaTran 2.0 (Cat# [TT210002]).