

## Product datasheet for RC213593

### Treacher Collins syndrome protein (TCOF1) (NM\_000356) Human Tagged ORF Clone

#### Product data:

Product Type:	Expression Plasmids
Product Name:	Treacher Collins syndrome protein (TCOF1) (NM_000356) Human Tagged ORF Clone
Tag:	Myc-DDK
Symbol:	TCOF1
Synonyms:	MFD1; TCS; TCS1; treacle
Vector:	pCMV6-Entry (PS100001)
E. coli Selection:	Kanamycin (25 ug/mL)
Cell Selection:	Neomycin
ORF Nucleotide Sequence:	>RC213593 representing NM_000356 Red=Cloning site Blue=ORF Green=Tags(s)

TTTTGTAATACGACTCACTATAGGGCGCCGGGAATTCGTCGACTGGATCCGGTACCGAGGAGATCTGCC  
GCC**CGGATCGCC**

ATGGCCGAGGCCAGGAAGCGGGGAGCTACTTCCCCTGATCTACCACCATCTGCTGCGGGCTGGCTATG  
TGGCTGCGGCGCGGAAGTGAAGGAGCAGAGCGGCCAGAAGTGTTCCTGGCTCAGCCCCTAACCCCTTCT  
GGACATCTATACACTGGCAACAAACCTCAGAGCTTGGTCGGAAGCGGAAGGCAGAGGAAGATGCGGCA  
CTGCAAGCTAAGAAAACCCGTGTGTGACACCCATCAGCACCTCGGAGAGCTCGGAAGAGGAGGAAGAAG  
CAGAAGCCGAAACCGCCAAAGCCACCCCAAGACTAGCATCTACCAACTCCTCAGTCTGGGGCGGACTT  
GCCATCAAGCATGAAAGAAAAAGCCAAGGCAGAGACAGAGAAAGCTGGCAAGACTGGGAATTCATGCCA  
CACCCCTGCCACTGGGAAGACGGTGGCAACCTTTCTGGGAAGTCTCCAGGAAGTCAGCAGAGCCCT  
CAGCAAATACTACGTTGGTCTCAGAAACTGAGGAGGAGGGCAGCGTCCCGGCTTTGGAGCTGTGCCAA  
GCCTGGGATGGTGTGACGGGCCAGGCCGACAGCTCCAGCGAGGACACCTCCAGCTCCAGTGATGAGACA  
GACGTGGAGGTAAGGCCTCTGAAAAAATCTCCAGGTCAGAGCTGCCTCAGCCCCTGCCAAGGGGACCC  
CTGGGAAAGGGGCTACCCAGCACCCCTGGGAAGGCAGGGCTGTAGCCTCCAGACCAAGGCAGGGAA  
GCCAGAGGAGGACTCAGAGAGCAGCAGCGAGGAGTCATCTGACAGTGAGGAGGAGACGCCAGCTGCCAAG  
GCCCTGCTTCAGGCGAAGGCCTCAGAAAAACCTCTCAGGTCGGAGCTGCCTCAGCCCCTGCCAAGGAGT  
CCCCCAGGAAAGGAGCTGCCCCAGCGCCCCCTGGGAAGACAGGGCCTGCAGTTGCCAAGGCCAGGCGGG  
GAAGCGGGAGGAGGACTCGCAGAGCAGCAGCGAGGAATCGGACAGTGAGGAGGAGGCGCCTGCTCAGGCG  
AAGCCTTCAGGGAAGGCCCCAGGTGAGGCGCCTCGGCCCTGCCAAGGAGTCCCCAGGAAAGGGG  
CTGCCCCAGCACCTCTAGGAAAACAGGGCCTGCAGCCGCCAGGTCCAGGTGGGAAAGCAGGAGGAGGA  
CTCAAGAAGCAGCAGCGAGGAGTCAGACAGTGACAGAGAGGCACTGGCAGCCATGAATGCAGCTCAGGTG  
AAGCCCTTGGGAAAAGCCCCAGGTGAAACCTGCCTCTACCATGGGCATGGGGCCCTTGGGAAAAGGCG  
CCGGCCAGTGCCACCCGGGAAGGTGGGCCTGCAACCCCTCAGCCCAGGTGGGGAAGTGGGAGGAGGA  
CTCAGAGAGCAGTAGTGAGGAGTCATCAGACAGAGTGTGGAGAGGTGCCACAGCTGTGGCCCGGCT  
CAGGAAAAGTCCTTGGGGAACATCTCCAGGCCAAACCCACTCCAGTCTGCCAAGGGGCCCTCAGA



View online »

AGGCAGGGCCTGTAGCCGTCCAGGTCAAGGCTGAAAAGCCCATGGACAACCTCGGAGAGCAGCGAGGAGTC  
ATCGGACAGTGCGGACAGTGAGGAGGCACCAGCAGCCATGACTGCAGCTCAGGCAAAACCAGCTCTGAAA  
ATTCTCAGACCAAGGCCTGCCAAAGAAAACCAATACCACTGCATCTGCCAAGGTGCGCCCTGTGCGAG  
TGGGCACCAAGCCCCCGAAAAGCAGGAACTGCGACTTCTCCAGCAGGCTCATCCCCAGCTGTGGCTGG  
GGGCACCCAGAGACCAGCAGAGGATTCTTCAAGCAGTGAGGAATCAGATAGTGAGGAAGAGAAGACAGGT  
CTTGACAGTAACCGTGGGACAGGCAAAGTCTGTGGGAAAGGCCTCCAGGTGAAAGCAGCCCTCAGTGCCTG  
TCAAGGGGTCTTGGGGCAAGGGACTGCTCCAGTACTCCCTGGGAAGACGGGGCTACAGTACCCAGCT  
GAAAGCTGAAAAGCAGGAAGACTCTGAGAGCAGTGAGGAGGAATCAGACAGTGAGGAAGCAGCTGCATCT  
CCAGCACAGGTGAAAACCTCAGTAAAGAAAACCCAGGCCAAAGCCAACCCAGCTGCCCCAGAGCACCTT  
CAGCAAAAGGGACAATTTAGCCCTGGAAAAGTTGCTACTGCAGCTGCTCAAGCCAAGCAGAGGTCTCC  
ATCCAAGGTGAAGCCACCAGTGAGAAACCCCGAAGCAGTACCGTCTTGGCGAGGGGCCAGCATCTGTG  
CCATCTGTGGGAAGGCCGTGGCTACAGCAGCTCAGGCCAGACAGGGCCAGAGGAGGACTCAGGGAGCA  
GTGAGGAGGAGTCAGACAGTGAGGAGGAGGCGGAGACGCTGGCTCAGGTGAAGCCTTCAGGAAGACCCA  
CCAGATCAGAGCTGCCTTGGCTCCTGCCAAGGAGTCCCCAGGAAAGGGCTGCCCAACACCTCCTGGG  
AAGACAGGGCCTTCGGCTGCCAGGCAGGAAGCAGGATGACTCAGGGAGCAGCAGCGAGGAATCAGACA  
GTGATGGGGAGGCACCGCAGCTGTGACCTCTGCCAGGTGATTAACCCCTCTGATTTTTGTCCAGCC  
TAATCGTAGTCCAGCTGGCCAGCTGCTACACCCGCACAAGCCAGGCTGCAAGCACCCCGAGGAAGGCC  
CGAGCCTCGGAGAGCACAGCCAGGAGCTCCTCCTCCGAGAGCGAGGATGAGGACGTGATCCCCGCTACAC  
AGTGCTTGACTCCTGGCATCAGAACCAATGTGGTGACCATGCCACTGCCACCCAAGAATAGCCCCCAA  
AGCCAGCATGGCTGGGGCCAGCAGCAGCAAGGAGTCCAGTCGGATATCAGATGGCAAGAAACAGGAGGGA  
CCAGCCACTCAGGTGTCAAAGAAGAACCCAGCTTCCCTCCACTGACCCAGGCTGCCCTGAAGTCTCTCG  
CCCAGAAAAGCCAGTGAGGCTCAGCCTCCTGTTGCCAGGACCCAGCCTTCAAGTGGGGTTGACAGTGTCTG  
GGGAACACTCCCTGCAACAAGTCCCAGAGCACCTCCGTCCAGGCCAAAGGGACCAACAAGCTCAGAAAA  
CCTAAGCTTCTGAGGTCCAGCAGGCCACCAAAGCCCTGAGAGCTCAGATGACAGTGAGGACAGCAGCG  
ACAGTTCTTCAGGAGTGAGGAAGATGGTGAAGGGCCCCAGGGGCAAGTCAGCCACACGCTGGGTCC  
CACCCCTCCAGGACAGAGACCTGGTGGAGGAGACCGCAGCAGAGTCCAGCGAGGATGATGTGGTGGCG  
CCATCCCAGTCTCTCTCAGGTTATATGACCCTGGACTAACCCAGCCAATTCAGGCCTCAAAAAG  
CCACTCCAAGCTAGACTCCAGCCCTCAGTTTCTCTACTCTGGCCGCCAAAGATGACCCAGATGGCAA  
GCAGGAGGCAAAGCCCCAACAGGCAGCAGGATGTTGTCCCTAAAACAGGTGAAAAGAGGCTGCTTCA  
GGCACCACACCTCAGAAGTCCCGAAGCCCAAGAAAGGGGCTGGGAACCCCAAGCCTCAACCCTGGCGC  
TGCAAAGCAACATCACCCAGTGCCTCCTGGGCCAACCTGGCCCTGAATGAGGCCAGGTGACGGCCTC  
AGTGGTGAAGGTCTGACTGAGCTGCTGGAACAGGAAAGAAAGAGGTGGTGGACACCACCAAGGAGAGC  
AGCAGGAAGGGCTGGGAGAGCCGAAGCGGAAGCTATCGGGAGACCAGCCAGCTGCCAGGACCCCAAGGA  
GCAAGAAGAAGAAGCTGGGGCCGGGGAAGGTGGGGAGGCCTCTGTTTCCCCAGAAAAGACCTCCAC  
GACTTCCAAGGGGAAAGCAAAGAGAGACAAAGCAAGTGGTGTGTAAGGAGAAGAAAGGGAAGGGGTCT  
CTTGGCTCCAAGGGGCAAGGACGAGCCAGAAGAGGAGCTTCAAGGGGATGGGGACGGTTGAAGGTG  
GAGATCAAAGCAACCCAAAGAGCAAGAAGGAGAAGAAGAAATCCGACAAGAGAAAAAAGACAAGAAAA  
AAAAGAAAAGAAGAAGAAAGCAAAAAGGCCTCAACCAAAGATTCTGAGTCACCGTCCCAGAAAGAAAAAG  
AAGAAAAAGAAGAAGACAGCAGAGCAGACTGTA

ACGCGTACGCGGCCGCTCGAGCAGAACTCATCTCAGAAGAGGATCTGGCAGCAATGATATCCTGGATT  
ACAAGGATGACGACGATAAGGTTAA

Protein Sequence: >RC213593 representing NM\_000356  
 Red=Cloning site Green=Tags(s)

MAEARKRRELLPLIYHLLRAGYVRAAREVKEQSGQKCFLAQPVTLLDIYTHWQQTSELGRKRKAEDDAA  
 LQAKKTRVSDPISTSESEEEEEAEATAKATPRLASTNSSVLGADLPSSMKEKAKAETEKAGKTGNSMP  
 HPATGKTVANLLSGKSPRKSAPESANTTLVSETEEEGVPFAFGAAAKPGMVSAGQADSSSEDTSSSSDET  
 DVEVKASEKILQVRAASAPAKGTPGKGATPAPPKGAGAVASQTKAGKPEEDESSESESSDSEEEPAQK  
 ALLQAKASGKTSQVGAASAPAKESPRKGAAPAPPKGTGPAVAKAQAGKREEDSSESSESDSEEEPAQA  
 KPSGKAPQVRAASAPAKESPRKGAAPAPRKTGPAQAQVQVQKQEEEDSRSSSESDSDREALAAMNAQV  
 KPLGKSPQVQPASTMGMPLGKGAGVPPGKVGPAATPSAQVQKWEEDSESSESSDSDSDGEVPTAVAPA  
 QEKSLGNILQAKPTSSPAKPPQKAGPVAVQVKAEPMDNSESESSDSDADSEEAPAAMTAAQAKPALK  
 IPQTKACPKKTNTTASAKVAPVRVGTQAPRKAGTATSPAGSSPAVAGGTQRPADSSSEESDSEEEKTG  
 LAVTVGQAKSVGKGLQVKAASVPVKGSLGQGTAPVLPKGTGPTVTQVKAEKQEDSESSEESDSEEAAS  
 PAQVKTSVKKTQAKANPAAARAPSAKGTISAPGKVVTAQAQKQSPSKVKPPVRNPQNSTVLARGPASV  
 PSYGKAVATAAQQTGPEEDSGSSEESDSEEEAETLAQVKPSGKTHQIRAALAPAKESPRKGAAPTPPG  
 KTGPSAAQAGKQDDSGSSEESDSDGEAPAAVTAQVIKPLIFVDPNRPAGPAATPAQAQAASPRKA  
 RASESTARSSSESEDEDVIPATQCLTPGIRTNVVTMPTAHPRIAPKASMAGASSKESRISDGKKQEG  
 PATQVSKKNPASLPLTQAALKVLAQKASEAQPPVARTQPSSGVDSAVGTLPATSPQSTSVQAKGTNKLK  
 PKLPEVQQAATKAPESSDSDSDSSSGSEEDGEGPQGAHSAHTLGPPTSRTETLVEETAESSEDDVVA  
 PSQSLLSGYMTPGLTPANSQASKATPKLDSSPSVSSTLAAKDDPDGKQEAQQAAGMLSPKTTGGKEAAS  
 GTTPQKSRKPKKAGNPQASTLALQSNITQCLLQGPWPLNEAQVQASVVKVLTALLEQERKKVDDTKES  
 SRKGWESRKRKLSGDQPAARTPRSKKKKLLGAGEGGEASVSPEKTTSTSKGAKRDKASGDVKEKKGKGS  
 LGSQGAKDEPEELQKGMGTVEGGDQSNPKSKKEKKKSDKRKKDKKKEKKEKKAKKASTKDSESPSQKKK  
 KKKKKTAEQTV

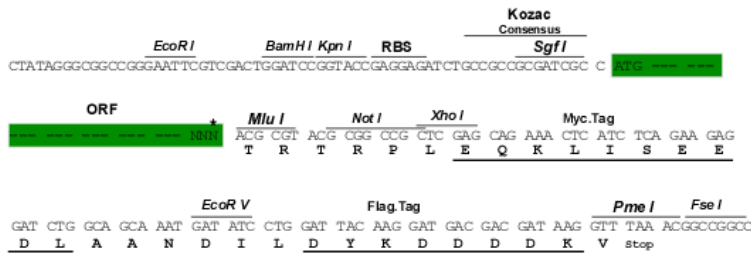
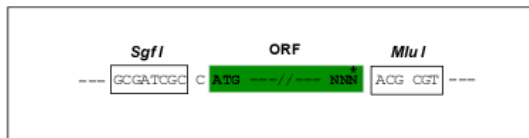
TRTRPLEQKLISEEDLAANDILDYKDDDDKV

Restriction Sites:

Sgfl-MluI

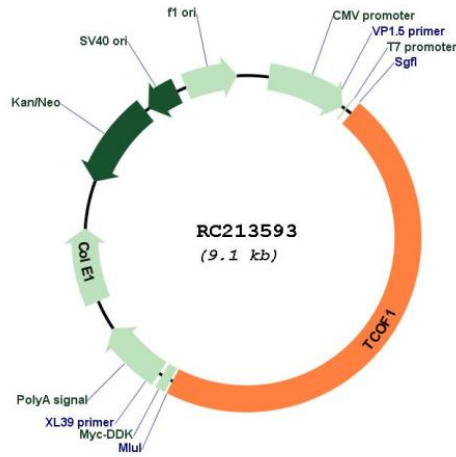
Cloning Scheme:

Cloning sites used for ORF Shuttling:



\* The last codon before the Stop codon of the ORF

Plasmid Map:



ACCN: NM\_000356

ORF Size: 4233 bp

OTI Disclaimer: The molecular sequence of this clone aligns with the gene accession number as a point of reference only. However, individual transcript sequences of the same gene can differ through naturally occurring variations (e.g. polymorphisms), each with its own valid existence. This clone is substantially in agreement with the reference, but a complete review of all prevailing variants is recommended prior to use. [More info](#)

OTI Annotation: This clone was engineered to express the complete ORF with an expression tag. Expression varies depending on the nature of the gene.

Components: The ORF clone is ion-exchange column purified and shipped in a 2D barcoded Matrix tube containing 10ug of transfection-ready, dried plasmid DNA (reconstitute with 100 ul of water).

**Reconstitution Method:**

1. Centrifuge at 5,000xg for 5min.
2. Carefully open the tube and add 100ul of sterile water to dissolve the DNA.
3. Close the tube and incubate for 10 minutes at room temperature.
4. Briefly vortex the tube and then do a quick spin (less than 5000xg) to concentrate the liquid at the bottom.
5. Store the suspended plasmid at -20°C. The DNA is stable for at least one year from date of shipping when stored at -20°C.

**RefSeq:** [NM\\_000356.4](#)

**RefSeq Size:** 4882 bp

**RefSeq ORF:** 4236 bp

**Locus ID:** 6949

**UniProt ID:** [Q13428](#)

**Cytogenetics:** 5q32-q33.1

**Protein Families:** Druggable Genome, Stem cell - Pluripotency

**MW:** 144.3 kDa

**Gene Summary:** This gene encodes a nucleolar protein with a LIS1 homology domain. The protein is involved in ribosomal DNA gene transcription through its interaction with upstream binding factor (UBF). Mutations in this gene have been associated with Treacher Collins syndrome, a disorder which includes abnormal craniofacial development. Multiple transcript variants encoding different isoforms have been found for this gene. [provided by RefSeq, Sep 2008]