

Product datasheet for **RC213581**

GRASP1 (GRIPAP1) (NM_207672) Human Tagged ORF Clone

Product data:

Product Type:	Expression Plasmids
Product Name:	GRASP1 (GRIPAP1) (NM_207672) Human Tagged ORF Clone
Tag:	Myc-DDK
Symbol:	GRASP1
Synonyms:	GRASP-1
Mammalian Cell Selection:	Neomycin
Vector:	pCMV6-Entry (PS100001)
E. coli Selection:	Kanamycin (25 ug/mL)



[View online »](#)

ORF Nucleotide Sequence:

>RC213581 representing NM_207672
 Red=Cloning site Blue=ORF Green=Tags(s)

TTTTGTAATACGACTCACTATAGGGCGGCCGGAATTCGTCGACTGGATCCGGTACCGAGGAGATCTGCC
 GCC**CGGATCGCC**

ATGGCGCAAGCTCTGCTGAGGAGGAGTTTCAGCGGATGCAGGCTCAGCTCCTGGAACCTCCGGACAAACA
 ACTACCAGCTTTCAGATGAACTACGCAAGAATGGTGTGAACTACCAGTCTTCACAGAAGGTCGCCTA
 CTTGGATAAAGGAGTTCAGCAAAGCTCAGAAGGCACTGAGCAAGAGCAAGAAGCTCAGGAAGTCGAGGTA
 TTGCTGAGTGAATAAGATGCTGCAGGCAAGCTGCACAGCCAGGAGGAGGACTTCGTTTGCAGAAC
 GCACACTAATGGCCGAGTTCAGCAAGGAACGCTATGGGAAAGAAGCCGGGAAATTCTCAGCTGTCAGTGA
 GGGCCAGGGGATCCCCAGGGGCCCCGGCCCCACCGTCTGGCCCCATGCCGTTGCCAGAGGTGGAG
 CTGAAATGGGAAATGGAGAAAGAGGAGAAGAGATTGCTCTGGGAACAGCTGCAAGGCTTAGAGAGCTCAA
 AGCAGGCCGAAACATCCAGGCTGCAGGAGGAATTGCTAAGCTCTCCGAGAACTGAAAAAGAAACAAGA
 AAGTTTTTGGCGTCTGCAGACAGAAAAGGAGACTCTGTTAATGACAGCAGGAACAAGATTGAGGAATTA
 CAACAACGGAAGGAAGCTGATCACAAGCCAGTTGGCTCGAACCAGAAAGCTGCAGCAGGAACTTGAGG
 CTGCCAATCAGAGCTTGGCAGAGCTGAGAGATCAGCGGCAGGGGGAGCGCCTGGAACATGCAGCAGCTTT
 GCGGGCCCTACAAGATCAGGTATCCATCCAGAGTGCAGATGCACAGGAACAAGTGGAAAGGCTTTTGGCT
 GAGAACAATGCCTTGAGGACTAGCTGGCTGCCCTGGAGCAGATCCAAACAGCAAAGACCCAAGAAGCTGA
 ATATGCTCCGGGAACAGACCACTGGGCTGGCAGCTGAGTTGCAGCAGCAGCAGGCTGAGTACGAGGACCT
 TATGGGACAGAAAGATGACCTCACTCCAGCTCCAGGAGTATTACGGGCCAATAGTCGACTGCTGGAA
 CAACTCAAGAAATAGGGCAGGAGAAGGAGCAGTTGACCCAGGAATTACAGGAGGCTCGGAAGAGTGGCG
 AGAAGCGGAAGCCATGCTGGATGAGCTAGCAATGGAAACGCTGCAAGAGAAGTCCAGCACAAGGAAGA
 GCTGGGAGCAGTTCGCTACGGCATGAGAAGGAGGTGCTGGGGGTGCGTGCCCGCTATGAGCGTGAGCTC
 CGAGAGCTGCATGAAGACAAGAAGCGTCAAGGAGGAGCTCCGTGGGCAGATCCGGGAGGAGAAGGCC
 GGACACGGGAGCTGGAGACTCTCCAGCAGACAGTGAAGAAGCTTCAAGCTCAGGTACATTCCATGGATGG
 AGCCAAGGGCTGGTTTGAACGGCGCTTGAAGGAAGCCAGGGCAAGGAGGAGGAGCTACAGGATGTACGG
 GATCAGCTCGAGCAGGCCAGGAGGAGCGGGACTGCCACCTGAAGACCATTAGCAGCCTGAAGCAGGAGG
 TGAAGGACACAGTGGATGGCAGAGGATCTGGAGAAGAAGGGCAGTGTGCGCTCAAGGACCTCAAGCG
 GCAGCTGCATTTGAGCGGAAACGGGCAGATAAGCTGCAGGAGCGACTGCAGGACATCCTACTAACAGC
 AAGAGCCGCTCAGGCCTTGAGGAGCTGGTTCTCTCAGAGATGAACTACCAAGCCGGACCCAGACAGGGG
 ACAGCAGTAGCATCTCCTCCTCAGCTACCGGGAGATCTTGGCGGAAAAGGAGAGCTCGGCTGTTCCAGC
 CAGGGTAAGGGGAAAGGAAGAACCTACAGCTCCAGCTTCTCTCAACCCAAAAATC

ACGCGTACGCGGCCGCTCGAGCAGAAACTCATCTCAGAAGAGGATCTGGCAGCAAATGATATCCTGGATT
 ACAAGGATGACGACGATAAGGTTTAA

Protein Sequence:

>RC213581 representing NM_207672
 Red=Cloning site Green=Tags(s)

MAQALSEEFQRMQAQLLELRNYYQLSDELKNGVELTSLRQKVAYLDKEFSKAQKALSKSKKAQEVEV
 LLSENEMLQAKLHSQEEDFRLQNSTLMAEFSKERYGKEAGKFSVSEGGDPPGGPAPTFLAPMPLAEVE
 LKWEMEKEEKRLLEWLQGLESSKQAEISRLQEELAKLSEKLLKKQESFCRLQTEKETLFNDSRNKIEEL
 QQRKEADHKAQLARTQKLQOELEAANQSLAELRDQRQGERLEHAAALRALQDQVSIQSADAQEQVEGLLA
 ENNALRTSLAALQIQAKTQELNMLREQTTGLAAELQQQQAIEYEDLMGQKDDLNSQLQESLRANSRLLE
 LQEQEIGQEKEQLTQELQEARKSAEKRKAMLDLAMELQEKSQHKEELGAVRLRHEKEVLGVRARYEREL
 RELHEDKKRQEELRGQIREEKARTRELETLQQTVEELQAQVHSMGAKGWFERRLKEAEGKEEELQDVR
 DQLEQAQEERDCHLKTISLQKQEVKDTVDGQRILEKKGSAALKDLKRLHLERKRADKLQERLQDILTNS
 KSRSGLEELVLEMNPSRTQTGDSSSISSFSYREILREKESSAVPARVRGKEEPTAPASLNPKI

TRTRPLEQKLISEEDLAANDILDYKDDDDKV

Restriction Sites: SgfI-MluI

Cloning Scheme:



ACCN: NM_207672

ORF Size: 1875 bp

OTI Disclaimer: The molecular sequence of this clone aligns with the gene accession number as a point of reference only. However, individual transcript sequences of the same gene can differ through naturally occurring variations (e.g. polymorphisms), each with its own valid existence. This clone is substantially in agreement with the reference, but a complete review of all prevailing variants is recommended prior to use. [More info](#)

OTI Annotation: This clone was engineered to express the complete ORF with an expression tag. Expression varies depending on the nature of the gene.

Components: The ORF clone is ion-exchange column purified and shipped in a 2D barcoded Matrix tube containing 10ug of transfection-ready, dried plasmid DNA (reconstitute with 100 ul of water).

Reconstitution Method:

1. Centrifuge at 5,000xg for 5min.
2. Carefully open the tube and add 100ul of sterile water to dissolve the DNA.
3. Close the tube and incubate for 10 minutes at room temperature.
4. Briefly vortex the tube and then do a quick spin (less than 5000xg) to concentrate the liquid at the bottom.
5. Store the suspended plasmid at -20°C. The DNA is stable for at least one year from date of shipping when stored at -20°C.

RefSeq: [NM_207672.1](#), [NP_997555.1](#)

RefSeq Size: 3260 bp

RefSeq ORF: 1877 bp

Locus ID: 56850

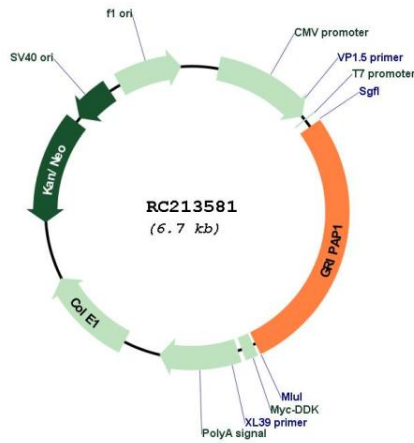
Cytogenetics: Xp11.23

Protein Families: Druggable Genome

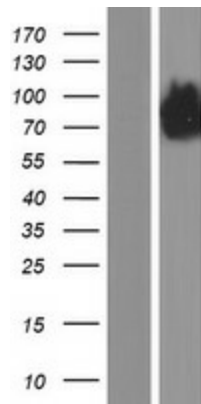
MW: 71.7 kDa

Gene Summary: This gene encodes a guanine nucleotide exchange factor for the Ras family of small G proteins (RasGEF). The encoded protein interacts in a complex with glutamate receptor interacting protein 1 (GRIP1) and plays a role in the regulation of AMPA receptor function. [provided by RefSeq, Aug 2013]

Product images:



Circular map for RC213581



Western blot validation of overexpression lysate (Cat# [LY403937]) using anti-DDK antibody (Cat# [TA50011-100]). Left: Cell lysates from untransfected HEK293T cells; Right: Cell lysates from HEK293T cells transfected with RC213581 using transfection reagent MegaTran 2.0 (Cat# [TT210002]).