

Product datasheet for RC213580

SSR2 (NM_003145) Human Tagged ORF Clone

Product data:

Product Type: Expression Plasmids
Product Name: SSR2 (NM_003145) Human Tagged ORF Clone
Tag: Myc-DDK
Symbol: SSR2
Synonyms: HSD25; TLAP; TRAP-BETA; TRAPB
Mammalian Cell Selection: Neomycin
Vector: pCMV6-Entry (PS100001)
E. coli Selection: Kanamycin (25 ug/mL)
ORF Nucleotide Sequence: >RC213580 representing NM_003145
 Red=Cloning site Blue=ORF Green=Tags(s)

TTTTGTAATACGACTCACTATAGGGCGGCCGGAATTCGTCGACTGGATCCGGTACCGAGGAGATCTGCC
 GCC**CGATCGCC**

ATGAGGCTGCTGTCATTTGGTGTGGCTCTATTTGCTGCTCAAGCAGAGGAAGGAGCCAGGCTTT
 TGGCTTCAAATCACTGCTGAACAGATACGCCGTGGAGGGACGAGACCTGACCTTGCACTACAACATCTA
 CAATGTTGGCTCAAGTGTGCATTAGACGTGGAATCTGATGATTCCTCCCTCCAGAAGACTTTGGC
 ATTGTGCTGGAATGCTCAATGTCAAATGGACCGGATTGCCCTGCTAGCAATGTCTCCACACTGTGG
 TCCTGCGCCCTCAAGGCTGGTATTTCAACTCACCTCGGCAACAATTACTTACTGGCCAGGAGGA
 TGGGCCCGTTGTGATTGGCTCTACCAGTGCACCTGGACAGGGAGGAATCCTGGCTCAGCGGGAGTTGAC
 AGGCGATTCTCCCTCATTTTCTGGACTGGCAGCCTTTGGGGTTCATGACCTTCCCTCCATCGGCATCC
 CCTGCTATTGTGGTACTCCAGCAAGAGGAAATATGACTCCCAAAACGAAGAAGAAC

ACGCGTACGCGGCCGCTCGAGCAGAACTCATCTCAGAAGAGGATCTGGCAGCAAATGATATCCTGGATT
 ACAAGGATGACGACGATAAGGTTTAA

Protein Sequence: >RC213580 representing NM_003145
 Red=Cloning site Green=Tags(s)

MRLLSFVVLALFAVTQAEEGARLLASKSLLNRYAVEGRDLTLQYNIYVNGSSAALDVELSDDSFPPEDFG
 IVSGMLNVKWDRIAPASNVSHTVLRLPLKAGYFNFTSATITYLAQEDGPVVIGSTSAPGQGGILAQREFD
 RRFSPHFLDWAAFGVMTLPSIGIPLLLWYSSKRKYDTPKTKKN

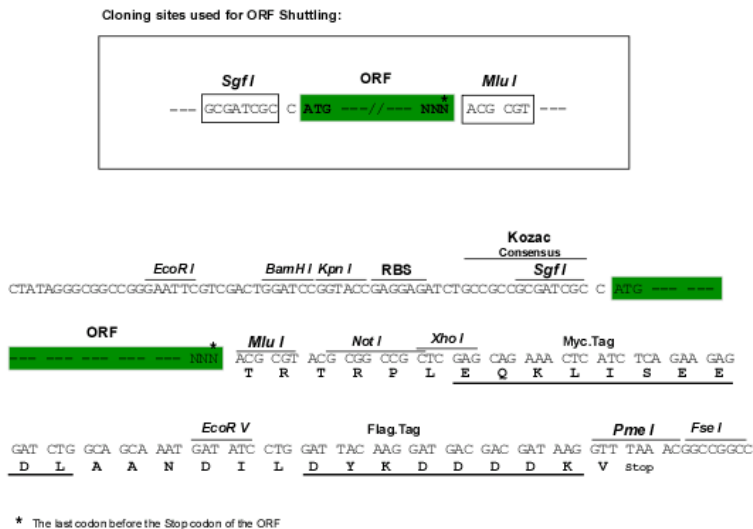
TRTRPLEQKLISEEDLAANDILDYKDDDDKV

Chromatograms: https://cdn.origene.com/chromatograms/mg4190_d09.zip



Restriction Sites: SgfI-MluI

Cloning Scheme:



ACCN: NM_003145

ORF Size: 549 bp

OTI Disclaimer: The molecular sequence of this clone aligns with the gene accession number as a point of reference only. However, individual transcript sequences of the same gene can differ through naturally occurring variations (e.g. polymorphisms), each with its own valid existence. This clone is substantially in agreement with the reference, but a complete review of all prevailing variants is recommended prior to use. [More info](#)

OTI Annotation: This clone was engineered to express the complete ORF with an expression tag. Expression varies depending on the nature of the gene.

Components: The ORF clone is ion-exchange column purified and shipped in a 2D barcoded Matrix tube containing 10ug of transfection-ready, dried plasmid DNA (reconstitute with 100 ul of water).

Reconstitution Method:

1. Centrifuge at 5,000xg for 5min.
2. Carefully open the tube and add 100ul of sterile water to dissolve the DNA.
3. Close the tube and incubate for 10 minutes at room temperature.
4. Briefly vortex the tube and then do a quick spin (less than 5000xg) to concentrate the liquid at the bottom.
5. Store the suspended plasmid at -20°C. The DNA is stable for at least one year from date of shipping when stored at -20°C.

RefSeq: [NM_003145.4](#)

RefSeq Size: 1093 bp

RefSeq ORF: 552 bp

Locus ID: 6746

UniProt ID: [P43308](#)

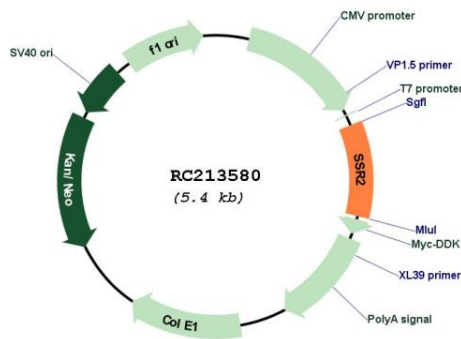
Cytogenetics: 1q22

Protein Families: Druggable Genome, Transmembrane

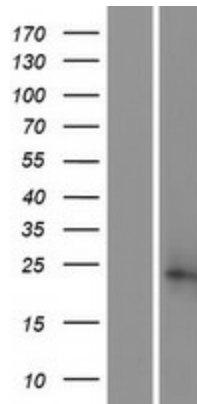
MW: 20 kDa

Gene Summary: The signal sequence receptor (SSR) is a glycosylated endoplasmic reticulum (ER) membrane receptor associated with protein translocation across the ER membrane. The SSR consists of 2 subunits, a 34-kD glycoprotein (alpha-SSR or SSR1) and a 22-kD glycoprotein (beta-SSR or SSR2). The human beta-signal sequence receptor gene (SSR2) maps to chromosome bands 1q21-q23. [provided by RefSeq, Jul 2008]

Product images:



Circular map for RC213580



Western blot validation of overexpression lysate (Cat# [LY418868]) using anti-DDK antibody (Cat# [TA50011-100]). Left: Cell lysates from untransfected HEK293T cells; Right: Cell lysates from HEK293T cells transfected with RC213580 using transfection reagent MegaTran 2.0 (Cat# [TT210002]).