

Product datasheet for **RC213575**

CEACAM20 (NM_001102599) Human Tagged ORF Clone

Product data:

| | |
|---------------------------|--|
| Product Type: | Expression Plasmids |
| Product Name: | CEACAM20 (NM_001102599) Human Tagged ORF Clone |
| Tag: | Myc-DDK |
| Symbol: | CEACAM20 |
| Synonyms: | UNQ9366 |
| Mammalian Cell Selection: | Neomycin |
| Vector: | pCMV6-Entry (PS100001) |
| E. coli Selection: | Kanamycin (25 ug/mL) |



[View online »](#)

ORF Nucleotide Sequence:

>RC213575 representing NM_001102599
 Red=Cloning site Blue=ORF Green=Tags(s)

TTTTGTAATACGACTCACTATAGGGCGGCCGGAATTCGTCGACTGGATCCGGTACCGAGGAGATCTGCC
 GCC**CGCATCGCC**

ATGGGGCCTGCTGACTCATGGGGACACCACTGGATGGGAATCCTGCTTTACGCTCGCTTTGTACCGTAT
 GGAGTCCCTCCAGCTGCAGCCAGCTCACCTCAATGCCAACCCACTTGATGCCACCCAAAGTGAGGATGT
 TGTTCCTGCTGTGTTTGGGACCCCCAGGACACCCAGATTTCATGGCAGATCCAGAGAGCTGGCCAAACCC
 TCCATTGCAGTCAGCCAGGCACTGCCATAGAGCAGAAGGACATGGTGACCTTCTACTGCACCACTAAGG
 ACGTCAACATTACCATCCACTGGGTTTCCAACAACCTCTCCGTTGTGTTCCATGAGCGCATGCAGCTGTC
 CAAGGATGGCAAGATCCTCACCATTCTCATTGTCCAGCGGGAGGACTCAGGGACTACCAATGTGAAGCT
 CGAGATGCCCTTCTGAGCCAGAGGAGCGACCCCATCTTCTGGATGTGAAGTATGGTCTGATCCTGTTG
 AAATCAAATTGGAGTCTGGTGTGCCAGTGGGGAGGTGGTTGAGGTGATGGAGGGCTCCAGCATGACCTT
 CTTAGCGGAAACAAAGTCTCACCACCCCTGTGCCTATACTTGGTTTCTCCTTGACTCCATTCTGTCTCAC
 ACCACGAGAACATTCACCATCCATGCTGTGTCCAGAGAACATGAGGGCCTGTACAGGTGCTTGGTGTCCA
 ACAGTGCCACCCACCTGTCCAGCCTGGGTACTCTGAAGGTCCGAGTACTTGAAACTGACCATGCCTCA
 AGTCGTGCCTTCAAGCCTGAACCTTGTGGAGAATGCTAGGTCTGTGGACCTGACCTGCCAAACCGTCAAT
 CAGAGTGTGAATGTCCAGTGGTTCCTAAGTGGCCAGCCCTCCTGCCAGTGAGCACCTGCAGCTGTGAG
 CTGACAACAGGACCCTAATCATCCATGGCCTCCAGCGGAATGACACGGGGCCCTATGCCTGTGAGGTCTG
 GAACTGGGGCAGCCGGCCCGGAGTGAGCCCTTGAAGTCAACTGTCCCAGTCCCTCCTCCCTG
 TCCTCAGGGGCCATCGTGGTATTGTATCGGGATCCTGGCTGTCATTGCTGTGGCCTCAGAAGTGGCT
 ATTTTCTACATCAGAAATGCCAGACGGCCCTCAAGGAAAACAACAGAGGACCCAGTCATGAGACCTC
 ACAACCCATCCCGAAGGAGGAGCACCCACAGAGCCAGTTCGAAAGCCTGAGTCTGAGTATTGCAAT
 ATATCCAGCTTCAGGGACGGATCAGAGTGAAGTCAACTGATGCAACCCAGACCTTCCAGAGGAGACCTATG
 AGACGAAGCTGCCTTCAAGCCGTAGAGGCAATTCTTTAGCCCTGGAAGCCACCACCCAAACCTCT
 GATGCCCCACTCAGATTGGTCTCCACTGTGCCAAAAACATGGAGTCAATCTATGAGGAGCTTGTGAAT
 CCAGAGCCCAACACTTACATCCAATCAACCCCTCCGTC

ACGCGTACGCGGCCGCTCGAGCAGAAACTCATCTCAGAAGAGGATCTGGCAGCAAATGATATCCTGGATT
 ACAAGGATGACGACGATAAGGTTTAA

Protein Sequence:

>RC213575 representing NM_001102599
 Red=Cloning site Green=Tags(s)

MGPADSWGHWMGILLSASLCTVWSPAAAQLTLNANPLDATQSEDVVLVFGTPTPQIHGRSRELAKE
 SIAVSPGTAIEQKDMVTFYCTTKDYNITIHWSNNLSVVFHERMQLSKDGKILILIVQREDSGTQCEA
 RDALLSQRSDPIFLDKYGPDPVEIKLESGVASGEVVEVMEGSSMFLAETKSHPPCAYTWFLDLSILSH
 TTRFTIHAVSREHEGLYRCLVNSATHLSSLGTLKVRVLETLTMPQVVPSSLNLVENARSVDLTCQTVN
 QSVNVQWFLSGQPLLSEHLQLSADNRTLIIHGLQRNDTPYACEVWNGSRARSEPLELTINCPQSSSL
 SSGAIGIVIGILAVIAVASELGYFLYIRNARRPSRKTTEDPSHETSQIPKKEHPTSPSESLSPEYCN
 ISQLQGRIRVELMQPPDLPEETYETKLPSASRRGNSFSPWKPPPKPLMPPLRLVSTVPKNMESIYEELVN
 PEPNTYIQINPSV

TRTRPLEQKLISEEDLAANDILDYKDDDDKV

Chromatograms:

https://cdn.origene.com/chromatograms/mk8063_h05.zip

Restriction Sites:

SgfI-MluI

Cloning Scheme:


ACCN: NM_001102599

ORF Size: 1509 bp

OTI Disclaimer: The molecular sequence of this clone aligns with the gene accession number as a point of reference only. However, individual transcript sequences of the same gene can differ through naturally occurring variations (e.g. polymorphisms), each with its own valid existence. This clone is substantially in agreement with the reference, but a complete review of all prevailing variants is recommended prior to use. [More info](#)

OTI Annotation: This clone was engineered to express the complete ORF with an expression tag. Expression varies depending on the nature of the gene.

Components: The ORF clone is ion-exchange column purified and shipped in a 2D barcoded Matrix tube containing 10ug of transfection-ready, dried plasmid DNA (reconstitute with 100 ul of water).

Reconstitution Method:

1. Centrifuge at 5,000xg for 5min.
2. Carefully open the tube and add 100ul of sterile water to dissolve the DNA.
3. Close the tube and incubate for 10 minutes at room temperature.
4. Briefly vortex the tube and then do a quick spin (less than 5000xg) to concentrate the liquid at the bottom.
5. Store the suspended plasmid at -20°C. The DNA is stable for at least one year from date of shipping when stored at -20°C.

RefSeq: [NM_001102599.1](#), [NP_001096069.1](#)

RefSeq Size: 1530 bp

RefSeq ORF: 1512 bp

Locus ID: 125931

UniProt ID: [Q6UY09](#)

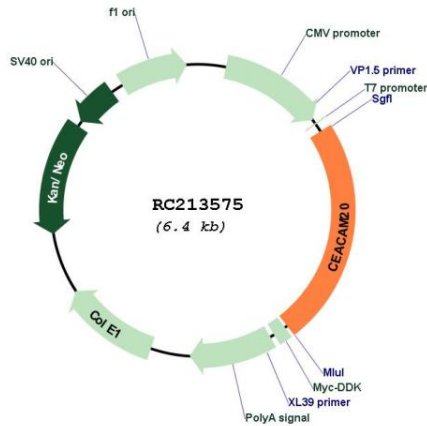
Cytogenetics: 19q13.31

Protein Families: Transmembrane

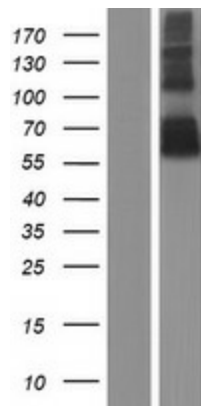
MW: 55.4 kDa

Gene Summary: Together with the tyrosine-protein kinase SYK, enhances production of the cytokine CXCL8/IL-8 via the NFkB pathway and may thus have a role in the intestinal immune response. [UniProtKB/Swiss-Prot Function]

Product images:



Circular map for RC213575



Western blot validation of overexpression lysate (Cat# [LY420168]) using anti-DDK antibody (Cat# [TA50011-100]). Left: Cell lysates from untransfected HEK293T cells; Right: Cell lysates from HEK293T cells transfected with RC213575 using transfection reagent MegaTran 2.0 (Cat# [TT210002]).