

## Product datasheet for RC213572

### ARMETL1 (CDNF) (NM\_001029954) Human Tagged ORF Clone

#### Product data:

**Product Type:** Expression Plasmids  
**Product Name:** ARMETL1 (CDNF) (NM\_001029954) Human Tagged ORF Clone  
**Tag:** Myc-DDK  
**Symbol:** ARMETL1  
**Synonyms:** ARMETL1  
**Mammalian Cell Selection:** Neomycin  
**Vector:** pCMV6-Entry (PS100001)  
**E. coli Selection:** Kanamycin (25 ug/mL)  
**ORF Nucleotide Sequence:** >RC213572 ORF sequence  
 Red=Cloning site Blue=ORF Green=Tags(s)

TTTTGTAATACGACTCACTATAGGGCGGCCGGAATTCGTCGACTGGATCCGGTACCGAGGAGATCTGCC  
 GCCCGCATCGCC

ATGTGGTGC GCGAGCCAGTTGCTGTGGTGGCCTTTTGC GCGGGCTTTTGGTCTCTACCCGGTGTGA  
 CGCAGGGCCAGGAGGCCGGGGGGCGCCAGGGGCCGACTGTGAAGTATGTAAGAATTCTTGAACCGATT  
 CTACAAGTCACTGATAGACAGAGGAGTTAACTTTTCGCTGGACACTATAGAGAAAGAATTGATCAGTTTT  
 TGCTTGGACACCAAAGGAAAAGAAAACCGCCTGTGCTATTATCTAGGAGCCACAAAAGACGCAGCCACAA  
 AGATCCTAAGTGAAGTCACTCGCCAATGAGTGTGCATATGCCTGCAATGAAGATTTGTGAGAAGCTGAA  
 GAAGTTGGATAGCCAGATCTGTGAGCTGAAATATGAAAAACACTGGACTTGGCATCAGTTGACCTGCGG  
 AAGATGAGAGTGGCAGAGCTGAAGCAGATCCTGCATAGCTGGGGGAGGAGTGCAGGGCCTGTGCAGAAA  
 AAAGTACTATGTGAATCTCATTCAAGAGCTGGCCCCAAGTATGCAGCGACACACCCCAAAACAGAGCT  
 C

ACGCGTACGCGGCCGCTCGAGCAGAACTCATCTCAGAAGAGGATCTGGCAGCAATGATATCCTGGATT  
 ACAAGGATGACGACGATAAGGTTTAA

**Protein Sequence:** >RC213572 protein sequence  
 Red=Cloning site Green=Tags(s)

MWCASPVAVVAF CAGLLVSH PVL TQGEAGRPGADCEVCKEFLNRFYKSLIDRGVNFSLDTIEKELISF  
 CLDTKGKENRLCYL GATKDAATKILSEVTRPMSVHMPAMKICEKLLKLD SQICELKYKTLDLASVDLR  
 KMRVAELKQILHSWGEECRACAEKTDYVNLIQELAPKYAATHPKTEL

TRTRPLEQKLI SEEDLAANDILDYKDDDDKV

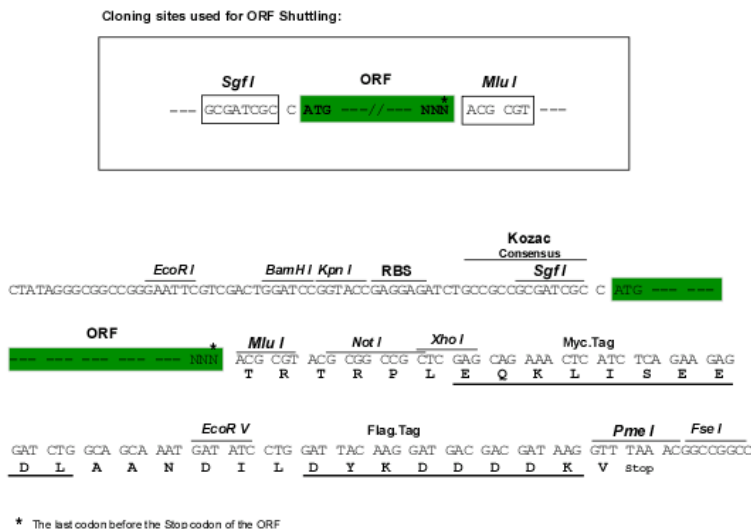


[View online »](#)

Chromatograms: [https://cdn.origene.com/chromatograms/mk6471\\_f09.zip](https://cdn.origene.com/chromatograms/mk6471_f09.zip)

Restriction Sites: SgfI-MluI

Cloning Scheme:



ACCN: NM\_001029954

ORF Size: 561 bp

OTI Disclaimer: The molecular sequence of this clone aligns with the gene accession number as a point of reference only. However, individual transcript sequences of the same gene can differ through naturally occurring variations (e.g. polymorphisms), each with its own valid existence. This clone is substantially in agreement with the reference, but a complete review of all prevailing variants is recommended prior to use. [More info](#)

OTI Annotation: This clone was engineered to express the complete ORF with an expression tag. Expression varies depending on the nature of the gene.

Components: The ORF clone is ion-exchange column purified and shipped in a 2D barcoded Matrix tube containing 10ug of transfection-ready, dried plasmid DNA (reconstitute with 100 ul of water).

Reconstitution Method:

1. Centrifuge at 5,000xg for 5min.
2. Carefully open the tube and add 100ul of sterile water to dissolve the DNA.
3. Close the tube and incubate for 10 minutes at room temperature.
4. Briefly vortex the tube and then do a quick spin (less than 5000xg) to concentrate the liquid at the bottom.
5. Store the suspended plasmid at -20°C. The DNA is stable for at least one year from date of shipping when stored at -20°C.

RefSeq: [NM\\_001029954.3](#)

RefSeq Size: 1330 bp

RefSeq ORF: 564 bp

Locus ID: 441549

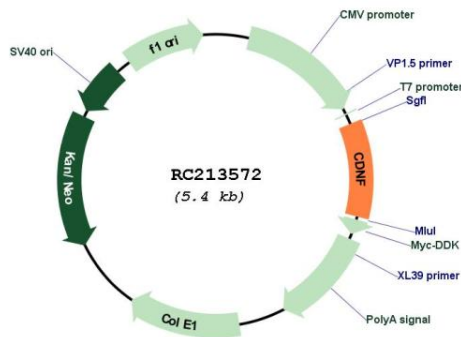
UniProt ID: [Q49AH0](#)

Cytogenetics: 10p13

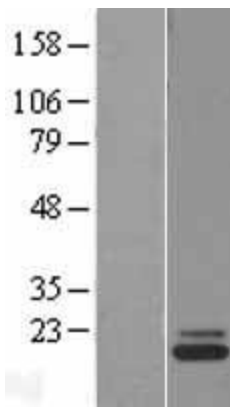
MW: 21 kDa

**Gene Summary:** Trophic factor for dopamine neurons. Prevents the 6-hydroxydopamine (6-OHDA)-induced degeneration of dopaminergic neurons. When administered after 6-OHDA-lesioning, restores the dopaminergic function and prevents the degeneration of dopaminergic neurons in substantia nigra (By similarity).[UniProtKB/Swiss-Prot Function]

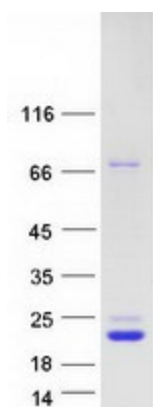
**Product images:**



Circular map for RC213572



Western blot validation of overexpression lysate (Cat# [LY422270]) using anti-DDK antibody (Cat# [TA50011-100]). Left: Cell lysates from untransfected HEK293T cells; Right: Cell lysates from HEK293T cells transfected with RC213572 using transfection reagent MegaTran 2.0 (Cat# [TT210002]).



Coomassie blue staining of purified CDNF protein (Cat# [TP313572]). The protein was produced from HEK293T cells transfected with CDNF cDNA clone (Cat# RC213572) using MegaTran 2.0 (Cat# [TT210002]).