

Product datasheet for RC213569

ASB13 (NM_024701) Human Tagged ORF Clone

Product data:

Product Type:	Expression Plasmids
Product Name:	ASB13 (NM_024701) Human Tagged ORF Clone
Tag:	Myc-DDK
Symbol:	ASB13
Mammalian Cell Selection:	Neomycin
Vector:	pCMV6-Entry (PS100001)
E. coli Selection:	Kanamycin (25 ug/mL)
ORF Nucleotide Sequence:	>RC213569 representing NM_024701 Red=Cloning site Blue=ORF Green=Tags(s)

TTTTGTAATACGACTCACTATAGGGCGGCCGGAATTCGTCGACTGGATCCGGTACCGAGGAGATCTGCC
GCC**CGATCGCC**

ATGGAGCCCCGGGCGGGACGGCTGCTTCTGGGCGACGTGGGTTTCTGGGTGGAGCGGACCCCTGTGC
ACGAGGCAGCCCAGCGGGGTGAGAGCCTGCAGCTGCAACAGCTGATCGAGAGCGGCGCCTGCGTGAACCA
GGTCACCGTGGACTCCATCACGCCCTGCACGCAGCCAGTCTGCAGGGCCAGGCGGGTGTGTGCAGCTG
CTGCTGGCGGCTGGGGCCAGGTGGATGCTCGCAACATCGACGGCAGCACCCCGCTCTGCGATGCCCTGCC
CCTCGGGCAGCATCGAGTGTGTGAAGCTTTGCTGCTCCTACGGGGCCAAGGTCAACCCTCCCTGTACAC
AGCGTCCCCCTGCACGAGGCCTGCATGAGCGGGAGTTCGAATGTGTGAGGCTTCTTATTGACGTCGGG
GCCAATCTGGAAGCGCACGATTGCCATTTGGGACCCCTCTGCACGTTGCCTGTGCCCGGGAGCATCTGG
ACTGTGTCAAAGTGTGCTCAATGCAGGGGCCAACGTGAATGCGGCAAAGCTTCATGAGACTGCCCTTCA
CCACGCGGCCAAGGTCAAGAATGTTGACCTCATCGAGATGCTTATCGAGTTTGGCGGCAACATCTACGCC
CGGGACAACCGCGGAAGAAGCCGTCTGACTACACGTGGAGCAGCAGCGCTCCCGCAAGTGCTTCGAGT
ACTACGAAAAGACACCTCTGACTCTGTACAGCTCTGCAGGGTGAAGTTCGAGGAAGGCCACTGGCGTCCG
AGGGCTGGAGAAGATTGCCAAGTTAAACATCCCCCCCCGGCTCATTGATTACCTCTCTACAAC

ACGCGTACGCGGCCGCTCGAGCAGAAACTCATCTCAGAAGAGGATCTGGCAGCAAATGATATCCTGGATT
ACAAGGATGACGACGATAAGGTTTAA



[View online »](#)

Protein Sequence: >RC213569 representing NM_024701
 Red=Cloning site Green=Tags(s)

MEPRAADGCFLGDVGFVWERTPVHEAAQRGESLQLQQLIESGACVNQVTVDSTITPLHAASLQGQARCVQL
 LLAAGAQVDARNIDGSTPLCDACASGSIECVKLLL SYGAKVNPPLYTASPLHEACMSGSECVRLIDVG
 ANLEAHDCHFGLPLHVACAREHLDCVKVLLNAGANVNAAKLHETALHHAAKVKNVDLIEMLIEFGGNIYA
 RDNRGKKPSDYTWSSAPAKCFEYYEKPLTLSQLCRVNLRKATGVRGLEKIAKLNIPRLIDYLSYN

TRTRPLEQKLISEEDLAANDILDYKDDDDKV

Chromatograms: https://cdn.origene.com/chromatograms/mk6485_h01.zip

Restriction Sites: SgfI-MluI

Cloning Scheme:



ACCN: NM_024701

ORF Size: 834 bp

OTI Disclaimer: The molecular sequence of this clone aligns with the gene accession number as a point of reference only. However, individual transcript sequences of the same gene can differ through naturally occurring variations (e.g. polymorphisms), each with its own valid existence. This clone is substantially in agreement with the reference, but a complete review of all prevailing variants is recommended prior to use. [More info](#)

OTI Annotation: This clone was engineered to express the complete ORF with an expression tag. Expression varies depending on the nature of the gene.

Components: The ORF clone is ion-exchange column purified and shipped in a 2D barcoded Matrix tube containing 10ug of transfection-ready, dried plasmid DNA (reconstitute with 100 ul of water).

Reconstitution Method:

1. Centrifuge at 5,000xg for 5min.
2. Carefully open the tube and add 100ul of sterile water to dissolve the DNA.
3. Close the tube and incubate for 10 minutes at room temperature.
4. Briefly vortex the tube and then do a quick spin (less than 5000xg) to concentrate the liquid at the bottom.
5. Store the suspended plasmid at -20°C. The DNA is stable for at least one year from date of shipping when stored at -20°C.

RefSeq: [NM_024701.4](#)

RefSeq Size: 2764 bp

RefSeq ORF: 837 bp

Locus ID: 79754

UniProt ID: [Q8WXK3](#)

Cytogenetics: 10p15.1

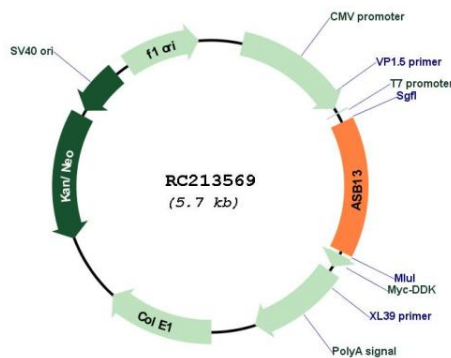
Domains: ANK

Protein Families: Druggable Genome

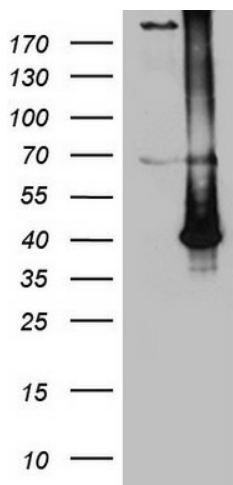
MW: 29.8 kDa

Gene Summary: The protein encoded by this gene is a member of the ankyrin repeat and SOCS box-containing (ASB) family of proteins. They contain ankyrin repeat sequence and a SOCS box domain. The SOCS box serves to couple suppressor of cytokine signalling (SOCS) proteins and their binding partners with the elongin B and C complex, possibly targeting them for degradation. Multiple alternatively spliced transcript variants, both protein-coding and not protein-coding, have been described for this gene. [provided by RefSeq, Nov 2010]

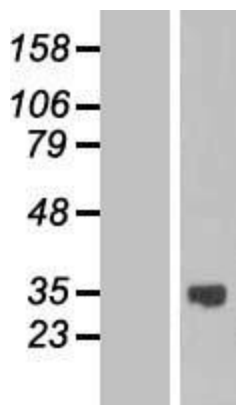
Product images:



Circular map for RC213569



HEK293T cells were transfected with the pCMV6-ENTRY control (Cat# [PS100001], Left lane) or pCMV6-ENTRY ASB13 (Cat# RC213569, Right lane) cDNA for 48 hrs and lysed. Equivalent amounts of cell lysates (5 ug per lane) were separated by SDS-PAGE and immunoblotted with anti-ASB13 (Cat# [TA809440])(1:2000). Positive lysates [LY411158] (100ug) and [LC411158] (20ug) can be purchased separately from OriGene.



Western blot validation of overexpression lysate (Cat# [LY411158]) using anti-DDK antibody (Cat# [TA50011-100]). Left: Cell lysates from untransfected HEK293T cells; Right: Cell lysates from HEK293T cells transfected with RC213569 using transfection reagent MegaTran 2.0 (Cat# [TT210002]).