

Product datasheet for **RC213568**

CREB5 (NM_182898) Human Tagged ORF Clone

Product data:

Product Type:	Expression Plasmids
Product Name:	CREB5 (NM_182898) Human Tagged ORF Clone
Tag:	Myc-DDK
Symbol:	CREB5
Synonyms:	CRE-BPA; CREB-5; CREBPA
Mammalian Cell Selection:	Neomycin
Vector:	pCMV6-Entry (PS100001)
E. coli Selection:	Kanamycin (25 ug/mL)



[View online »](#)

ORF Nucleotide Sequence:

>RC213568 representing NM_182898
 Red=Cloning site Blue=ORF Green=Tags(s)

TTTTGTAATACGACTCACTATAGGGCGGCCGGAATTCGTCGACTGGATCCGGTACCGAGGAGATCTGCC
 GCC**GCGATCGCC**

ATGATTTATGAGGAATCCAAGATGAATTTGGAGCAGGAGAGGCCGTTTGTCTGCAGTGCCCCAGGCTGCT
 CCCAGCGCTTCCCAACAGAGGACCATCTGATGATTCATAGGCACAAACATGAAATGACTTTGAAGTTTCC
 TTCAATAAAAAACAGACAATATGTTATCAGATCAAACCTCCGACCCCAACGAGATTCCTGAAGAACTGCGAG
 GAGGTGGCCTCTTCAGCGAGCTGGACTGCTCCCTGGAGCACGAGTTCAGGAAGGCTCAGGAAGAGGAGA
 GCAGCAAGCGGAATATCTCGATGCATAATGCAGTTGGTGGGGCCATGACGGGGCCCGAACTCACCAGCT
 TAGCAGCGCTCGGCTGCCAACCATGACACCAACGTTGTGATTACAGCAAGCCATGCCGTCGCTCAGTCC
 AGCTCTGTCACTACTCAGGCACCTCCACCAACCGCCAGATCGGGCTGTCCCAGGCTCTCTATCTTCTC
 TGCTACATCTCCACAACAGACAGAGACAGCCCATGCCAGCCTCCATGCCTGGGACCCTGCCAACCTAC
 AATGCCAGGATCTCCGCCGTCTTGATGCCAATGGAGCGACAAAATGTCAGTGAATCCAGCATCATGGGG
 ATGCAAGGTCAAATCTCAGCAACCCCTGTGCTTCTCCCAGGTCAGCCAAATGCATTAGAAAGCAAAA
 TGAGGTTGAAGGCTGCATTGACTCACCACCTGCTGCCATGTCAAATGGGAACATGAACACCATGGGACA
 CATGATGGAGATGATGGGCTCCCGCAGGACCAGACGCCACCATCACATGCACTCGCACCCGCATCAG
 CACCAGACTGCCACCCATCACCTTACCCACACCAGCACCAGCACCAGCACACCATCTCACCCCTC
 AACCCATCACCAGCAGAACCATCCACATCACCCTCCATTCCCACCTTCATGCACACCCAGCAGCATCA
 CCAGACCTCGCCACATCCGCCCTGCACACCGCAACCAAGCACAGGTTTACCAGCAACACAACAGATG
 CAGCCAACCCAGACAATACAGCCACCCAGCCACAGGGGGCGCCGGCAAGGGTGGTAGACGAGGATC
 CGGACGAGAGGGCGCGGAAATTTCTGGAACGGAACCGGGCAGCTGCCACCCGCTGCAGACAGAAGGAA
 GGTCTGGGTGATGTCATTGGAAAAGAAAGCAGAAGAACTCACCCAGACAACATGCAGCTTCAGAATGAA
 GTGCTATGTTGAAAAATGAGGTGGCCAGCTGAAACAGTTGTTGTTAACACATAAAGACTGCCAATAA
 CAGCCATGCAGAAAGAATCACAAGGATATCTAAGTCCAGAGAGTAGCCCTCCTGTAGTCTGTCCCAGC
 TTGCTCCAGCAACAAGTCATCCAGCATAATACCATCACTACTTCTCATCGGTCAGCGAGGTGGTAGGA
 AGCTCCACCTCAGCCAGCTCACCCTCACAGAACAGACCTGAATCCGATTCTT

ACGCGTACGCGGCCGCTCGAGCAGAACTCATCTCAGAAGAGGATCTGGCAGCAAATGATATCTGGATT
 ACAAGGATGACGACGATAAGGTTTAA

Protein Sequence:

>RC213568 representing NM_182898
 Red=Cloning site Green=Tags(s)

MIYEESKMNLEQERPFVCSAPGCSQRFPPTEDHLMIHHRKHHEMTLKFPSIKTDNMLSDQTPPTPFLKNC
 EVGLFSELDCSLEHEFRKAQEEESSKRNI SMHNAVGGAMTGPETHQLSSARLPNHDTNVVIQQAMPSPQS
 SSVITQAPSTNRQIGPVPGSLSSLLHLHNRQRQMPASMPGTL PNPTMPGSSAVLMPMERQMSVNSSIMG
 MQGPNLSNPCASPVQPMHSEAKMRLKAALTHHPAAMSNGNMNTMGHMEMMGSRDQTPHHMHSHPHQ
 HQTLPHPHPYPHQHHPAHPHPQPHHQNHHPHSHSLHAHPAHHQTSHPHPLHTGNQAQVSPATQQM
 QPTQTIQPPQPTGRRRRRVVDEDPDERRRKF LERNRAAATRCRQKRKVWVMSLEKKADEL TQTNMQLQNE
 VSMLKNEVAQLKQLLLTHKDCPITAMQKESQGYLSPESSPPASPVACSQQVIQHNTITSSSVSEVVG
 SSTLSQLTTHRTDLNPIL

TRTRPLEQKLISEEDLAANDILDYKDDDDKV

Chromatograms:

https://cdn.origene.com/chromatograms/mk8064_b08.zip

Restriction Sites:

Sgfl-Mlul

Cloning Scheme:


ACCN: NM_182898

ORF Size: 1524 bp

OTI Disclaimer: The molecular sequence of this clone aligns with the gene accession number as a point of reference only. However, individual transcript sequences of the same gene can differ through naturally occurring variations (e.g. polymorphisms), each with its own valid existence. This clone is substantially in agreement with the reference, but a complete review of all prevailing variants is recommended prior to use. [More info](#)

OTI Annotation: This clone was engineered to express the complete ORF with an expression tag. Expression varies depending on the nature of the gene.

Components: The ORF clone is ion-exchange column purified and shipped in a 2D barcoded Matrix tube containing 10ug of transfection-ready, dried plasmid DNA (reconstitute with 100 ul of water).

Reconstitution Method:

1. Centrifuge at 5,000xg for 5min.
2. Carefully open the tube and add 100ul of sterile water to dissolve the DNA.
3. Close the tube and incubate for 10 minutes at room temperature.
4. Briefly vortex the tube and then do a quick spin (less than 5000xg) to concentrate the liquid at the bottom.
5. Store the suspended plasmid at -20°C. The DNA is stable for at least one year from date of shipping when stored at -20°C.

RefSeq: [NM_182898.4](#)

RefSeq Size: 8532 bp

RefSeq ORF: 1527 bp

Locus ID: 9586

UniProt ID: [Q02930](#)

Cytogenetics: 7p15.1

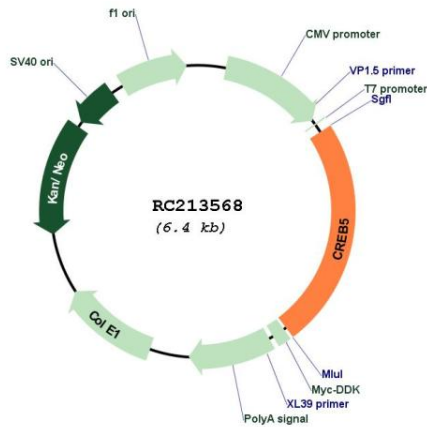
Protein Families: Transcription Factors

Protein Pathways: Huntington's disease, Prostate cancer

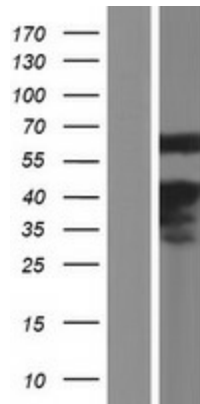
MW: 56.7 kDa

Gene Summary: The product of this gene belongs to the CRE (cAMP response element)-binding protein family. Members of this family contain zinc-finger and bZIP DNA-binding domains. The encoded protein specifically binds to CRE as a homodimer or a heterodimer with c-Jun or CRE-BP1, and functions as a CRE-dependent trans-activator. Alternatively spliced transcript variants encoding different isoforms have been identified. [provided by RefSeq, Jul 2008]

Product images:



Circular map for RC213568



Western blot validation of overexpression lysate (Cat# [LY405390]) using anti-DDK antibody (Cat# [TA50011-100]). Left: Cell lysates from untransfected HEK293T cells; Right: Cell lysates from HEK293T cells transfected with RC213568 using transfection reagent MegaTran 2.0 (Cat# [TT210002]).