

Product datasheet for RC213560

Cordon bleu homolog (COBL) (NM_015198) Human Tagged ORF Clone

Product data:

Product Type:	Expression Plasmids
Product Name:	Cordon bleu homolog (COBL) (NM_015198) Human Tagged ORF Clone
Tag:	Myc-DDK
Symbol:	Cordon bleu homolog
Mammalian Cell Selection:	Neomycin
Vector:	pCMV6-Entry (PS100001)
E. coli Selection:	Kanamycin (25 ug/mL)
ORF Nucleotide Sequence:	>RC213560 representing NM_015198 Red=Cloning site Blue=ORF Green=Tags(s)

TTTTGTAATACGACTCACTATAGGGCGGCCGGAATTCGTCGACTGGATCCGGTACCGAGGAGATCTGCC
GCCCGATCGCC

ATGGACGCGCCGCGCCTCGGCGGCCAAGCCCCGACCGGGAGGAAGATGAAGGCTCGTGCTCCCCAC
CTCCTGGAAGGCTGCCACTCTGCATGTGCACAGTGACCAGAAGCCCCCACGATGGGGCCCTCGGGTC
GCAGCAGAAGCTGGTTCGCATGAAGGAGGCGCTGAGGGCCAGCACCATGGACGTCACCGTGGTCTGCCT
AGTGGCTGGAGAAGAGGAGCGTCTCAATGGGAGCCATGCGATGATGGACCTACTGGTGAACCTTGGC
TTCAGAACCACCTGAATCCATCCACCATGCCCTTGAATTCGGTCTTCAGAAACCAACCAACCTTTGAG
TTTTAAGCCAAATACTTTGATTGGACCCTGAATGTGCATACTGTGTTTCTGAAAGAAAAAGTTCCTGAA
GAGAAGGTTAAGCCTGGTCCCCCTAAGGTGCCTGAGAAATCTGTGCGTGGTTCGTAATTACCTGCGGA
CACAAAAAGCTGTTGTGCGTGTGAGCCCTGAGGTTCTCTCCAGAATATTCTCCAGTCAATTTGTGCAAA
GTGTGAGGTCAGCCAGAGCACGTGGTTCCTCAGGGACAACATTGCCGAGAGGAGCTGGAGCTGTCC
AAGTCCCTGAACGAGCTCGGGATAAAGGAGCTCTACGCGTGGGACAACAGAAGAGAAACCTTTAGGAAAT
CATCACTTGGCAATGATGAGACAGATAAAGAGAAGAAAAATTTCTGGGATTTTTCAAAGTTAATAAAAG
AAGCAATAGTAAGGCTGTTAACGACCCCACTCCCATCCATGCACTCACGTTCTCTACGCTGGGT
CCATCCCTCTCGCTGGGAGCATCTCAGGGGTGTCCGTGAAGTCGGAGATGAAGAAGCGCCGAGCCCTC
CTCTCCAGGTTCAAGGCCACCTGTGCAAGACAAGGCATCGGAAAAGGTATCTCTTGGGTCACAGATTGA
TTTACAGAAGAAGAAGCGCGAGCGCCAGCTCCCCCTCCACCACAGCCACCACCACCGAGTCCCCTGATC
CCCAACCGCACTGAGGATAAAGGAGGAGAACAGGAAGAGCACGATGGTAAGCCTGCCCTGGGGTCTGGCA
GCCACTGCAGCCCGGATGGAGCCCCGAGGTGCTGTCAGAGGCGGAGGAGACCGTGTGAGTTGGCAGCTG
TTTTGCGTCGGAGGACACGACCGAGGACTCAGGAGTGATGAGTTCCCCCTCAGACATCGTCTCTGGAC
TCGAGCAGGACAGCATGAAATACAAAGACAAGTGGGCCACAGACCAGGAAGACTGCAGTGACCAGGACC
TCGCTGGAACCCAGACCTGGGTCCCAGAAGAGCCCCCTTGTGGGAGAAGAATGGCTCTGAGAATCACA
TCTGAGAAGTAAAAAGCTGTACAGCCTCAAATGATGAAGAAGACCTATTAATTGCTGGAGAGTCCGT
AAAACCCCTGCAGAAGTTGATGAAGACCTGGAAGAAATGGAAGACAGCTATGAAACAGACACCAGCTCCC
TACCAGCTCCATCCATGGTGCATCAACCACTGCCACAGGATGCCATGATCCCTCACGGGACACAGA



[View online »](#)

TGCAATCCCAGTAACATTCATAGGGGAAGTTTCAGATGATCCTGTGGATTCGGGGTTGTTTTCCAATAGA
AACAAATGCTGGGCTTTTCTCGACTCGGAGGGTGTGCCAGCAGGAGAGACTCCCTGGCGCCACTTCAAG
CTGAGCACAGCCAGCCCCATGAAAAGGCAAGGGAGGAAGTACCTGCCCTGCACCCCGCTTCCCATGACGT
CGGAAAAGGAATCCGTGTGGCCTTATCTAACATCTCTAAAGATGGGAATCTAATGGAAACGGCGCCAGG
GTGACTCTTTTCTCGAATCTTACACAGACAACCTAAATGCAAAAGTGAAAGACAAAGTGTATGGCT
GTGCTGACGGGGAGAGGACTCAAGCCACAGAGAGAGTGAATCCCAACCGGTGAATGAAAAGGACAGCAA
CGATAAAAACGCTGCCTTGGCACCAACATCATGGCACCAACGAGGCCAAAACCCAGGGAAAAGTACAGA
CTTAAGCACGGCCTCACAACTATAAAATCATTCTCCTCAAAGTCAGAGATGCGATGTTACGACAGAGATG
TGTCCTCTCCACCGGAGCCATTAAGATTGACGAGCTGGGGAAGTTGGTGTGCTCAGCCACCCGCAT
CAGGATCATTTCCCTGTCTTCTGTCTGTGCTGAAGCAGAATCTCAGCCATTGGGAAAGTCAGAGAGTTC
TGGAGGTGCAACTCTGTGAAAAACACCTGGGCCGACCCTCAGAGAGCTCTGCCAGGGGACCCCCCTCCA
CCCCTGTGCCACGCAGACGCAGAATCCAGAGAGCAGACTCCAAGCAGACCCCAAGCCAATATCGCCCCA
GCAGAAGTCTGCCACCATGAGGGCCGGAACCCCTAGGGGAGGGGAGAAACCAGCCCCCACCATGGGC
ATGGGTACGTGAGGGTCCAGCAGCTCACACCACAGAAGTACATTTCTCAAGCCTCAGAGAAGAAGT
CCAGCCAGTATGTGGCCTCTGCCATTGCCAAGGCATAGGAGCCCAAAGTCCATGCTGATGTGGTGTGAG
GCCACACGGTTATGCCGAGAAGGGTTATGCAGGCAAGGCCCAAGTGTGGCTGCACCACCTGCTACTGTG
AAAGATGACAGGACATCCAGCCCACTCAGAGACACAAGGATGGAAGGATGGTGCCAGTGGCCCTGTG
TCACTCTCCCAACAACCACGGGGAAGATTTGGCAGTGGGAGCCCTCCTAGGGGGAGGTTCATTGGCCC
ACACAGGAAGTTGTCTACTCAGGACAGACCTGTGCTATCCACAGAAGCTCCTGTTTCTACTGGTTCAG
TCTTCCCAGAGGGATCGTGTTCCTGTGGGACAGAGCTGTGGTTTCAGTGGAAAGCAAAGCACAAGTAGCC
AGGAGGCCAGCTCAGCATCTGAGCCCAGACGGCACCTGATGGTACAGACCCACCCCTCCACACACATC
TGACACTCAGGCCTGCAGCAGGGAGCTGGTCAATGGCTCTGTGCGCGCCCAGGCCACGGCGAGCCTTCC
CACCTCCAGGAGGTCTGGCACAGAAAGCCACATTTCTCTAGAAGAGAGGAAAAGCCAGTGTGTTCT
CTACAGATGAAAATGAAACAGACAGTATTTGGCCACCCAGCATTTCCTGAGGAGGAAAAGCCAGTGTGTTCT
TGTTGTCCAGAGACCAGTCCCAAAGACACATCCCTGCACTCTGCCCTGATGGAAGCCATCCACTCTGCG
GGAGGGAAGGACAGACTACGCAAGACGGCAGAACACACCGGGGAGGGCAGGCCAGCGAAACTGTCCTACA
CGGAGGCAGAGGGCGAACGATCTGCACTGCTGGCAGCTATCCGCGGGCACAGCGGCACCTGCAGCCTGAG
GAAGGTGGCATCCTCTGCTTCTGAGGAGCTCCAGAGCTTCGAGATGCCGCACTCTCTGCTCAGGGCTCG
GAAAGTCTCTGCTAGAAGACCTTGGTCTTCTGTCCCCACCAGCCATCCCCACCACCCCTCCACCT
CCCAGGCTCTCTGACCAAGGACGGCCTCCAGGTTACGACGGGCACCCTCAGCAACACCGCAGACGC
AAGGCAAGCCTTGATGGACGCCATCCGCTCCGGCACAGGGGCTGCGAGACTGAGAAAGGTGCCCTTGCTC
GTG

AGCGGACCGACGCGTACGCGGCCGCTCGAGCAGAAACTCATCTCAGAAGAGGATCTGGCAGCAAATGATATCC
TGGATTACAAGGATGACGACGATAAGGTTTAA

Protein Sequence: >RC213560 representing NM_015198
 Red=Cloning site Green=Tags(s)

```
MDAPRASAAPPTGRKMKARAPPPGKAATLHVHSDQKPPHDGALGSQQNLVRMKEALRASTMDVTVVLP
SGLEKRSVLNGSHAMDLLVELCLQNHLNPSHHALEIRSETQQPLSFKPNTLIGTLNVHTVFLKEKYPE
EKVKPGPPKVPEKSVRLVVNYLRTQKAVVRVSPVPLQNILPVICAKCEVSEHVLLRDNIAEGEELS
KSLNELGIKELYAWDNRRRETFRKSSLDGNETDKEKKKFLGFFKVNKRNSKGLCTTPNSPMSHSRSLTLG
PSLSLGSISGVSVKSEMKRRAPPPGSGPPVQDKASEKVSLSQIDLQKKRRAPAPPPQPPPPSPLI
PNRTEDKEENRKSTMVSLPLGSGSHCSPDGAPQVLSEAETVSVGSCFASDPTTEDSGVMSPSDIVSLD
SQQDSMKYKDKWATDQEDCSDQDLAGTDLGPQKSPLWEKNGSENSHLRTEKAVTASNDEEDLLIAGEFR
KTLAELDEDLEEMEDSYETDTSSTSSIHGASNHCQDAMIHPGDTDAIPVTFIGEVSDDPVDSGLFSNR
NNNAGSFDSEGVASRRDSLAPLQAEHSQPHEKAREEVPALHPASHDVGKIRVALSNIKDGNLMETAPR
VTSFASNLHTDNLNAKVKDKVYGCADGERTQATERVNSQPVNEKDSNDKNAALAPTSWHQRGQNPCKSYR
LKHGLTTYKIIPPKSEMRCYDRDVSLSGAIKIDELGNLVSHPATGIRIISLSSSVPEAESQPIGKVREF
WRCNSVEKHLGRPSESSARGPPSTPVPTQTQNPESRLQADPKPISPQQKSAHHEGRNPLGEGRNQPPTMG
MGHVRVPAAHTEVTFLKPQRRSSQYVASIAKRI GAPKVHADVVRPHGYAEKGYAGKAPVLAAPPVTV
KDDRTSSPHSETQGWKDGAWPCVTPPNNHGEDLAVGAPPRGEVIGPHRKLSTQDRPAAIHRSSCFSLVQ
SSQRDRVSVGQSCGFSGKQSTSSQEASSASEPRRAPDGTDP PPPHTSDTQACSREL VNGSVRAPGHGEP
HPPGGSGTESHILLEREKPSVFSTDGNETDSIWPPSIFGPKKKFKPVVQRPVKDTSLSHSALMEAIHSA
GGKDRLRKTAHTGEGRAKLSYTEAEGERSALLAAIRGHSGTCSLRKVASSASEELQSFRAALSAQGS
ESPLLEDLGLLSPPAIPPPPPPSQALSAPRTASRFSTGTLSENTADARQALMDAIRSGTGAARLRKVPLL
V
```

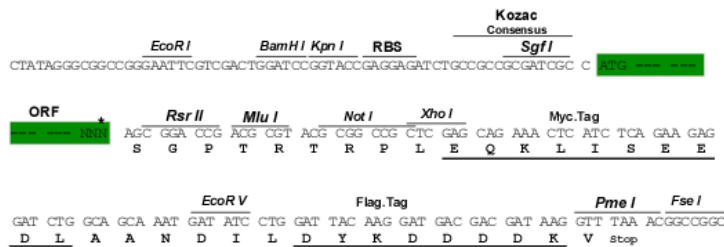
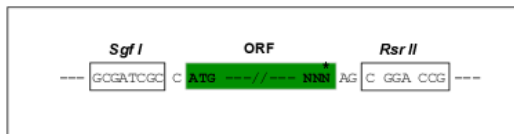
SGPTRRRLEQKLI SEEDLAANDILDYKDDDDKV

Chromatograms: https://cdn.origene.com/chromatograms/mk8024_b07.zip

Restriction Sites: SgfI-RsrII

Cloning Scheme:

Cloning sites used for ORF Shuttling:



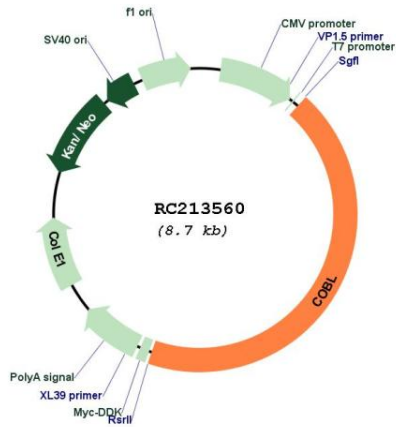
* The last codon before the Stop codon of the ORF

ACCN: NM_015198

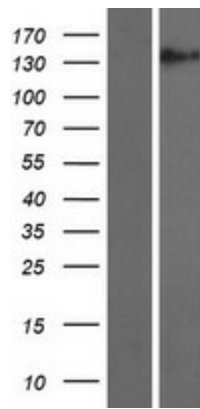
ORF Size: 3783 bp

OTI Disclaimer:	The molecular sequence of this clone aligns with the gene accession number as a point of reference only. However, individual transcript sequences of the same gene can differ through naturally occurring variations (e.g. polymorphisms), each with its own valid existence. This clone is substantially in agreement with the reference, but a complete review of all prevailing variants is recommended prior to use. More info
OTI Annotation:	This clone was engineered to express the complete ORF with an expression tag. Expression varies depending on the nature of the gene.
Components:	The ORF clone is ion-exchange column purified and shipped in a 2D barcoded Matrix tube containing 10ug of transfection-ready, dried plasmid DNA (reconstitute with 100 ul of water).
Reconstitution Method:	<ol style="list-style-type: none">1. Centrifuge at 5,000xg for 5min.2. Carefully open the tube and add 100ul of sterile water to dissolve the DNA.3. Close the tube and incubate for 10 minutes at room temperature.4. Briefly vortex the tube and then do a quick spin (less than 5000xg) to concentrate the liquid at the bottom.5. Store the suspended plasmid at -20°C. The DNA is stable for at least one year from date of shipping when stored at -20°C.
RefSeq:	NM_015198.5
RefSeq Size:	5289 bp
RefSeq ORF:	3786 bp
Locus ID:	23242
UniProt ID:	O75128
Cytogenetics:	7p12.1
Domains:	WH2
MW:	135.4 kDa
Gene Summary:	This gene encodes a protein that contains WH2 domains (WASP, Wiskott-Aldrich syndrome protein, homology domain-2) that interact with actin. The encoded actin regulator protein is required for growth and assembly of brush border microvilli that play a role in maintaining intestinal homeostasis. A similar protein in mouse functions in midbrain neural tube closure. A pseudogene of this gene is located on chromosome X. [provided by RefSeq, Oct 2016]

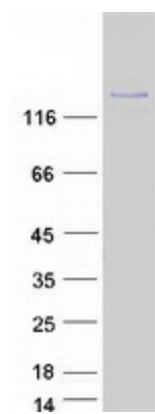
Product images:



Circular map for RC213560



Western blot validation of overexpression lysate (Cat# [LY414720]) using anti-DDK antibody (Cat# [TA50011-100]). Left: Cell lysates from untransfected HEK293T cells; Right: Cell lysates from HEK293T cells transfected with RC213560 using transfection reagent MegaTran 2.0 (Cat# [TT210002]).



Coomassie blue staining of purified COBL protein (Cat# [TP313560]). The protein was produced from HEK293T cells transfected with COBL cDNA clone (Cat# RC213560) using MegaTran 2.0 (Cat# [TT210002]).