

Product datasheet for **RC213540**

SCF (KITLG) (NM_003994) Human Tagged ORF Clone

Product data:

Product Type:	Expression Plasmids
Product Name:	SCF (KITLG) (NM_003994) Human Tagged ORF Clone
Tag:	Myc-DDK
Symbol:	KITLG
Synonyms:	DCUA; DFNA69; FPH2; FPHH; Kitl; KL-1; MGF; SCF; SF; SHEP7; SLF
Mammalian Cell Selection:	Neomycin
Vector:	pCMV6-Entry (PS100001)
E. coli Selection:	Kanamycin (25 ug/mL)
ORF Nucleotide Sequence:	>RC213540 representing NM_003994 Red=Cloning site Blue=ORF Green=Tags(s)

TTTTGTAATACGACTCACTATAGGGCGCCGGGAATTCGTCGACTGGATCCGGTACCGAGGAGATCTGCC
GCC**CGATCGCC**

ATGAAGAAGACACAAACTGGATTCTCACTTGCATTTATCTTCAGCTGCTCCTATTTAATCCTCTCGTCA
AAACTGAAGGGATCTGCAGGAATCGTGTGACTAATAATGTAAAAGACGTCACTAAATTGGTGCAAATCT
TCCAAAAGACTACATGATAACCCCTCAAATATGCCCCGGGATGGATGTTTTGCCAAGTCATTGTTGGATA
AGCGAGATGGTAGTACAATTGTCAGACAGCTTGACTGATCTTCTGGACAAGTTTTCAAATATTTCTGAAG
GCTTGAGTAATTATCCATCATAGACAAACTTGTGAATATAGTGGATGACCTTGTGGAGTGCCTGAAAGA
AAACTCATCTAAGGATCTAAAAAATCATTCAAGAGCCCAGAACCAGGCTCTTTACTCCTGAAGAATTC
TTTAGAATTTTTAATAGATCCATTGATGCCTTCAAGGACTTTGTAGTGGCATCTGAAACTAGTGATTGTG
TGGTTTCTTCAACATTAAGTCCTGAGAAAGGGAAGGCCAAAAATCCCCCTGGAGACTCCAGCCTACACTG
GGCAGCCATGGCATTGCCAGCATTGTTTCTCTTATAATTGGCTTTGCTTTTGGAGCCTTAACTGGGAAG
AAGAGACAGCCAAGTCTTACAAGGCGAGTTGAAAATATACAAATTAATGAAGAGGATAATGAGATAAGTA
TGTTGCAAGAGAAAGAGAGAGAGTTTCAAGAAGTG

ACGCGTACGCGGCCGCTCGAGCAGAAACTCATCTCAGAAGAGGATCTGGCAGCAAATGATATCCTGGATT
ACAAGGATGACGACGATAAGGTTTAA



[View online »](#)

Protein Sequence: >RC213540 representing NM_003994
 Red=Cloning site Green=Tags(s)

MKKTQTWILTCIYLQLLLFNPLVKTEGICRNRVTNNVKDVTKLVANLPKDYMITLKYYVPGMDVLPSHCWI
 SEMVVQLSDSLTDLLDKFSNISEGLSNYSIIDKLVNIVDDLVECVKENS SKDLKKSFKSPEPRLFTPEEF
 FRIFNRSIDAFKDFVVASETSDCVVSSTLSPEK GKAKNPPGDSSLHWAAMALPALFSLIIGFAFGALYWK
 KRQPSLTRAIVENIQINEEDNEISMLQEKEREFQEV

TRTRPLEQKLISEEDLAANDILDYKDDDDKV

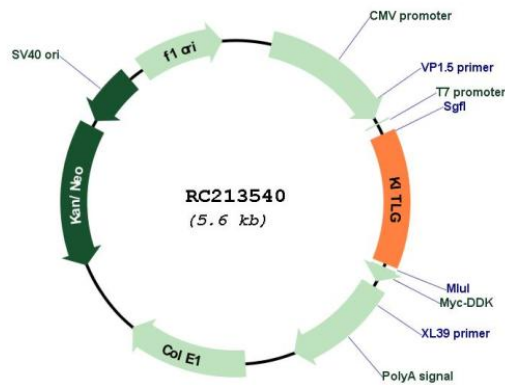
Chromatograms: https://cdn.origene.com/chromatograms/ja1501_a05.zip

Restriction Sites: SgfI-MluI

Cloning Scheme:



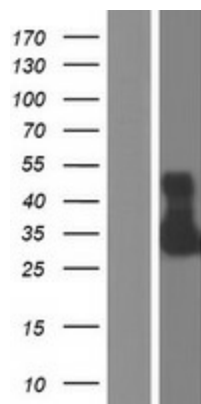
Plasmid Map:



ACCN: NM_003994

ORF Size: 735 bp

OTI Disclaimer:	The molecular sequence of this clone aligns with the gene accession number as a point of reference only. However, individual transcript sequences of the same gene can differ through naturally occurring variations (e.g. polymorphisms), each with its own valid existence. This clone is substantially in agreement with the reference, but a complete review of all prevailing variants is recommended prior to use. More info
OTI Annotation:	This clone was engineered to express the complete ORF with an expression tag. Expression varies depending on the nature of the gene.
Components:	The ORF clone is ion-exchange column purified and shipped in a 2D barcoded Matrix tube containing 10ug of transfection-ready, dried plasmid DNA (reconstitute with 100 ul of water).
Reconstitution Method:	<ol style="list-style-type: none">1. Centrifuge at 5,000xg for 5min.2. Carefully open the tube and add 100ul of sterile water to dissolve the DNA.3. Close the tube and incubate for 10 minutes at room temperature.4. Briefly vortex the tube and then do a quick spin (less than 5000xg) to concentrate the liquid at the bottom.5. Store the suspended plasmid at -20°C. The DNA is stable for at least one year from date of shipping when stored at -20°C.
RefSeq:	NM_003994.5
RefSeq Size:	5351 bp
RefSeq ORF:	738 bp
Locus ID:	4254
UniProt ID:	P21583
Cytogenetics:	12q21.32
Domains:	SCF
Protein Families:	Druggable Genome, Transmembrane
Protein Pathways:	Cytokine-cytokine receptor interaction, Hematopoietic cell lineage, Melanogenesis, Pathways in cancer
MW:	27.87 kDa
Gene Summary:	This gene encodes the ligand of the tyrosine-kinase receptor encoded by the KIT locus. This ligand is a pleiotropic factor that acts in utero in germ cell and neural cell development, and hematopoiesis, all believed to reflect a role in cell migration. In adults, it functions pleiotropically, while mostly noted for its continued requirement in hematopoiesis. Two transcript variants encoding different isoforms have been found for this gene. [provided by RefSeq, Jul 2008]

Product images:

Western blot validation of overexpression lysate (Cat# [LY418261]) using anti-DDK antibody (Cat# [TA50011-100]). Left: Cell lysates from untransfected HEK293T cells; Right: Cell lysates from HEK293T cells transfected with RC213540 using transfection reagent MegaTran 2.0 (Cat# [TT210002]).