

Product datasheet for RC213537

LIN28B (NM_001004317) Human Tagged ORF Clone

Product data:

Product Type:	Expression Plasmids
Product Name:	LIN28B (NM_001004317) Human Tagged ORF Clone
Tag:	Myc-DDK
Symbol:	LIN28B
Synonyms:	CSDD2
Mammalian Cell Selection:	Neomycin
Vector:	pCMV6-Entry (PS100001)
E. coli Selection:	Kanamycin (25 ug/mL)
ORF Nucleotide Sequence:	>RC213537 representing NM_001004317 Red=Cloning site Blue=ORF Green=Tags(s)

TTTTGTAATACGACTCACTATAGGGCGGCCGGAATTCGTCGACTGGATCCGGTACCGAGGAGATCTGCC
GCC**CGATCGCC**

ATGGCCGAAGGCGGGCTAGCAAAGGTGGTGGAGAAGAGCCCGGAAGCTGCCGGAGCCGGCAGAGGAGG
AATCCCAGGTTTTGCGCGGAAGTGGCCACTGTAAGTGGTCAATGTGCGCATGGGATTTGGATTCATCTC
CATGATAAACCGAGAGGGAAGCCCTTGGATATCCAGTCGATGATTTGTACACCAAAGCAAATATTC
ATGGAAGGATTTAGAAGCCTAAAAGAAGGAGAACCAGTGAATTCACATTTAAAAATCTTCCAAAGGCC
TTGAGTCAATACGGTAACAGGACCTGGTGGGAGCCCTGTTTAGGAAGTAAAAGAAGACCCAAAGGGAA
GACACTACAGAAAAGAAAACCAAAGGGAGATAGATGCTACAAGTGGTGGCCTTGATCATGCTAAG
GAATGTAGTCTACCTCCTCAGCCAAAGAAGTGCCTACTGTGAGAGCATCATGCACATGGTGGCAAAT
GCCACATAAAAAATGTTGCACAGCCACCCGCGAGTTCTCAGGGAAGACAGGAAGCAGAATCCCAGCCATG
CACTTCAACTCTCCCTCGAGAAGTGGGAGGCGGGCATGGCTGTACATCACCACCGTTTCTCAGGAGGCT
AGGGCAGAGATCTCAGAACGGTCAGGCAGGTACCTCAAGAAGCTTCTCCACGAAGTCATCTATAGCAC
CAGAAGAGCAAAGCAAAAAGGGCCTTCAGTTCAAAAAGGAAAAAGACA

ACGCGTACGCGGCCGCTCGAGCAGAACTCATCTCAGAAGAGGATCTGGCAGCAAATGATATCCTGGATT
ACAAGGATGACGACGATAAGGTTTAA



[View online »](#)

Protein Sequence: >RC213537 representing NM_001004317
Red=Cloning site Green=Tags(s)

MAEGGASKGGGEEPGKLEPEAEESQVLRGTGHCKWFNVRMGFGFISMINREGSPLDIPVDVVFHQSKLF
 MEGFRSLKEGEPVEFTFKKSSKLESIKVTGPGGSPCLGSERRPKGKTLQKRKPKGDRYNCGLDHHAK
 ECLSLPPQPKKCHYCQSIMHVMANCPHKNAQPPASSQGRQEAESQPCTSTLPREVGGGGHCTSPFPQEA
 RAEISERSGRSPQEASSTKSSIAPEEQSKKGPSVQKRKKT

TRTRPLEQKLISEEDLAANDILDYKDDDDKV

Chromatograms: https://cdn.origene.com/chromatograms/mk6505_f12.zip

Restriction Sites: SgfI-MluI

Cloning Scheme:

Cloning sites used for ORF Shuttling:



* The last codon before the Stop codon of the ORF

ACCN: NM_001004317

ORF Size: 750 bp

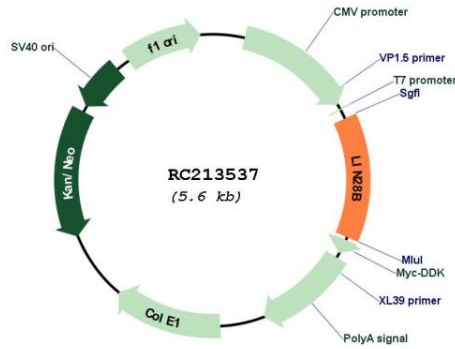
OTI Disclaimer: Due to the inherent nature of this plasmid, standard methods to replicate additional amounts of DNA in E. coli are highly likely to result in mutations and/or rearrangements. Therefore, OriGene does not guarantee the capability to replicate this plasmid DNA. Additional amounts of DNA can be purchased from OriGene with batch-specific, full-sequence verification at a reduced cost. Please contact our customer care team at custsupport@origene.com or by calling 301.340.3188 option 3 for pricing and delivery.

The molecular sequence of this clone aligns with the gene accession number as a point of reference only. However, individual transcript sequences of the same gene can differ through naturally occurring variations (e.g. polymorphisms), each with its own valid existence. This clone is substantially in agreement with the reference, but a complete review of all prevailing variants is recommended prior to use. [More info](#)

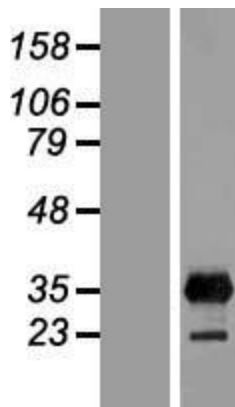
OTI Annotation: This clone was engineered to express the complete ORF with an expression tag. Expression varies depending on the nature of the gene.

Components:	The ORF clone is ion-exchange column purified and shipped in a 2D barcoded Matrix tube containing 10ug of transfection-ready, dried plasmid DNA (reconstitute with 100 ul of water).
Reconstitution Method:	<ol style="list-style-type: none">1. Centrifuge at 5,000xg for 5min.2. Carefully open the tube and add 100ul of sterile water to dissolve the DNA.3. Close the tube and incubate for 10 minutes at room temperature.4. Briefly vortex the tube and then do a quick spin (less than 5000xg) to concentrate the liquid at the bottom.5. Store the suspended plasmid at -20°C. The DNA is stable for at least one year from date of shipping when stored at -20°C.
Note:	Plasmids are not sterile. For experiments where strict sterility is required, filtration with 0.22um filter is required.
RefSeq:	NM_001004317.4
RefSeq Size:	5504 bp
RefSeq ORF:	753 bp
Locus ID:	389421
UniProt ID:	Q6ZN17
Cytogenetics:	6q16.3-q21
MW:	26.9 kDa
Gene Summary:	The protein encoded by this gene belongs to the lin-28 family, which is characterized by the presence of a cold-shock domain and a pair of CCHC zinc finger domains. This gene is highly expressed in testis, fetal liver, placenta, and in primary human tumors and cancer cell lines. It is negatively regulated by microRNAs that target sites in the 3' UTR, and overexpression of this gene in primary tumors is linked to the repression of let-7 family of microRNAs and derepression of let-7 targets, which facilitates cellular transformation. [provided by RefSeq, Jun 2012]

Product images:



Circular map for RC213537



Western blot validation of overexpression lysate (Cat# [LY424091]) using anti-DDK antibody (Cat# [TA50011-100]). Left: Cell lysates from untransfected HEK293T cells; Right: Cell lysates from HEK293T cells transfected with RC213537 using transfection reagent MegaTran 2.0 (Cat# [TT210002]).