

## Product datasheet for RC213534

### TREML2 (NM\_024807) Human Tagged ORF Clone

#### Product data:

Product Type:	Expression Plasmids
Product Name:	TREML2 (NM_024807) Human Tagged ORF Clone
Tag:	Myc-DDK
Symbol:	TREML2
Synonyms:	C6orf76; dj238O23.1; TLT-2; TLT2
Mammalian Cell Selection:	Neomycin
Vector:	pCMV6-Entry (PS100001)
E. coli Selection:	Kanamycin (25 ug/mL)
ORF Nucleotide Sequence:	>RC213534 representing NM_024807 Red=Cloning site Blue=ORF Green=Tags(s)

TTTTGTAATACGACTCACTATAGGGCGCCGGGAATTCGTCGACTGGATCCGGTACCGAGGAGATCTGCC  
GCC**CGATCGCC**

ATGAATCCCTGCGGTTGGCTGGGGCAGTGGGTCCCACACTGCCTCACTTCCTAAATGGGCAGCTTAC  
TTTTAGAACCCCGGATCCTTCCCTGGCAGGCCAGGTGGCACATCCTGTGTCGGGTGGGCCCTCACCTTG  
GATCTCCAGGCCCTGACTGCCCCAGCTGGATGGAACCATGGCCCCAGCCTTCTGCTGCTGCTGCTGCTG  
TGGCCACAGGGTTGCGTCTCAGGCCCTCTGCTGACAGTGTATACACAAAAGTGAGGCTCCTTGAAGGGG  
AGACTCTGTCTGTGAGTCTCCTATAAGGGCTACAAAAACCGCTGGAGGGCAAGTTTTGGTGAAAAT  
CAGGAAGAAGAAGTGTGAGCCTGGCTTTGCCCGAGTCTGGGTGAAAGGGCCCCGCTACTTGTGAGGAC  
GATGCCAGGCCAAGGTGGTCAACATCACCATGGTGGCCCTCAAGCTCCAGGACTCAGGCCGATACTGGT  
GCATGCGCAATACCTCTGGGATCCTGTACCCCTTGATGGGCTTCCAGCTGGATGTGTCTCCAGCTCCCCA  
AAGTGAGAGGAACATTCTTTACACATCTGGACAACATCCTCAAGAGTGGAACTGTCAAACTGGCCAA  
GCCCCACCTCAGGCCCTGATGCCCTTTTACCACTGGTGTGATGGTGTTCACCCAGGACTCATCACCT  
TGCTAGGCTCTTAGCCTCCACCAGACCTGCCTCCAAGACAGGCTACAGCTTCACTGCTACCAGCACCAC  
CAGCCAGGAGCCAGGAGGACCATGGGGTCCCAGACAGTGACCGCTCTCCAGCAATGCCAGGGACTCC  
TCTGCTGGCCAGAATCCATCTCCTAAGTCTGGGACCTCAGCACCAGATCGCCACCACAGGGCTCT  
GCCTCACCAGCAGATCTCTCCTCAACAGACTACCCTCCATGCCCTCCATCAGGCACCAGGATGTTTACTC  
CACTGTGCTTGGGGTGGTGTGACCCTCCTGGTGTGATGCTGATCATGGTCTATGGGTTTTGGAAGAAG  
AGACACATGGCAAGCTACAGCATGTGCAGCGATCCTTCTACACGTGACCCACCTGGAAGACCAGAGCCCT  
ATGTGGAAGTCTACTTGATC

**ACGCGT**ACGCGGCCGCTCGAGCAGAAACTCATCTCAGAAGAGGATCTGGCAGCAATGATATCCTGGATT  
ACAAGGATGACGACGATAAGGTTTAA



[View online »](#)

**Protein Sequence:** >RC213534 representing NM\_024807  
Red=Cloning site Green=Tags(s)

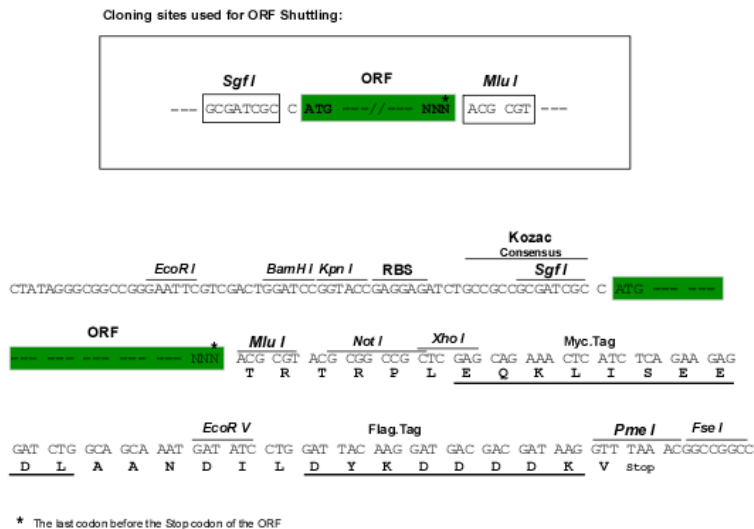
MNPCGWLGA VGPTLPHFPKWAASLLEPRILPWQAQVAHPVSGGSPWISRPDTAQLDGTMAPAFLLLLLL  
 WPQGCVSGPSADSVYTKVRLLEGETLSVQCSYKGYKNRVEGKVWCKIRKKKCEPGFARVWVKGPYLLQD  
 DAQAKVVNITMVALKLQDSGRYWCNRNTSGILYPLMGFQLDVSPAPQSERNIPTHLNLIKSGT VTTGQ  
 APTSGPDAPFTTGVMVFTPGLITLPRLLASTRPASKTGYSFTATSTTSQGP RRMTGMSQTVTASPSNARDS  
 SAGPESISTKSGDLSTRSPTTGLCLTSRLLNRLPSMPSIRHQDVYSTVLGVVLTLLVLMIMVYGFWKK  
 RHMASYSMCDPSTRDPPGRPEPYVEVYLI

TRTRPLEQKLISEEDLAANDILDYKDDDDKV

**Chromatograms:** [https://cdn.origene.com/chromatograms/mg2737\\_g09.zip](https://cdn.origene.com/chromatograms/mg2737_g09.zip)

**Restriction Sites:** SgfI-MluI

**Cloning Scheme:**



**ACCN:** NM\_024807

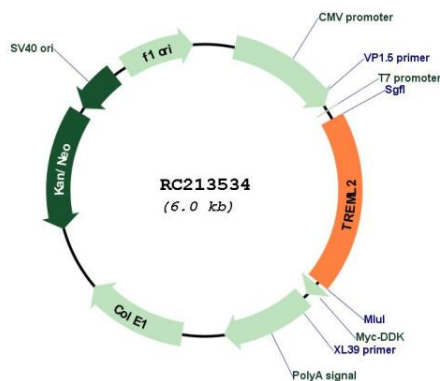
**ORF Size:** 1140 bp

**OTI Disclaimer:** Due to the inherent nature of this plasmid, standard methods to replicate additional amounts of DNA in E. coli are highly likely to result in mutations and/or rearrangements. Therefore, OriGene does not guarantee the capability to replicate this plasmid DNA. Additional amounts of DNA can be purchased from OriGene with batch-specific, full-sequence verification at a reduced cost. Please contact our customer care team at [custsupport@origene.com](mailto:custsupport@origene.com) or by calling 301.340.3188 option 3 for pricing and delivery.

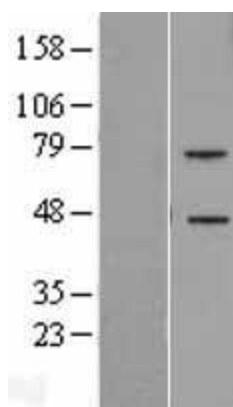
The molecular sequence of this clone aligns with the gene accession number as a point of reference only. However, individual transcript sequences of the same gene can differ through naturally occurring variations (e.g. polymorphisms), each with its own valid existence. This clone is substantially in agreement with the reference, but a complete review of all prevailing variants is recommended prior to use. [More info](#)

<b>OTI Annotation:</b>	This clone was engineered to express the complete ORF with an expression tag. Expression varies depending on the nature of the gene.
<b>Components:</b>	The ORF clone is ion-exchange column purified and shipped in a 2D barcoded Matrix tube containing 10ug of transfection-ready, dried plasmid DNA (reconstitute with 100 ul of water).
<b>Reconstitution Method:</b>	<ol style="list-style-type: none"><li>1. Centrifuge at 5,000xg for 5min.</li><li>2. Carefully open the tube and add 100ul of sterile water to dissolve the DNA.</li><li>3. Close the tube and incubate for 10 minutes at room temperature.</li><li>4. Briefly vortex the tube and then do a quick spin (less than 5000xg) to concentrate the liquid at the bottom.</li><li>5. Store the suspended plasmid at -20°C. The DNA is stable for at least one year from date of shipping when stored at -20°C.</li></ol>
<b>RefSeq:</b>	<a href="#">NM_024807.1</a> , <a href="#">NP_079083.1</a>
<b>RefSeq Size:</b>	3071 bp
<b>RefSeq ORF:</b>	966 bp
<b>Locus ID:</b>	79865
<b>UniProt ID:</b>	<a href="#">Q5T2D2</a>
<b>Cytogenetics:</b>	6p21.1
<b>Protein Families:</b>	Druggable Genome, Transmembrane
<b>MW:</b>	34.9 kDa
<b>Gene Summary:</b>	TREML2 is located in a gene cluster on chromosome 6 with the single Ig variable (IgV) domain activating receptors TREM1 (MIM 605085) and TREM2 (MIM 605086), but it has distinct structural and functional properties (Allcock et al., 2003 [PubMed 12645956]).[supplied by OMIM, Mar 2008]

## Product images:



Circular map for RC213534



Western blot validation of overexpression lysate (Cat# [LY411062]) using anti-DDK antibody (Cat# [TA50011-100]). Left: Cell lysates from untransfected HEK293T cells; Right: Cell lysates from HEK293T cells transfected with RC213534 using transfection reagent MegaTran 2.0 (Cat# [TT210002]).