

## Product datasheet for **RC213528**

### LCTL (NM\_207338) Human Tagged ORF Clone

#### Product data:

Product Type:	Expression Plasmids
Product Name:	LCTL (NM_207338) Human Tagged ORF Clone
Tag:	Myc-DDK
Symbol:	LCTL
Synonyms:	KLG; KLPH
Mammalian Cell Selection:	Neomycin
Vector:	pCMV6-Entry (PS100001)
E. coli Selection:	Kanamycin (25 ug/mL)



[View online »](#)

**ORF Nucleotide Sequence:**

>RC213528 representing NM\_207338  
 Red=Cloning site Blue=ORF Green=Tags(s)

TTTTGTAATACGACTCACTATAGGGCGGCCGGAATTCGTCGACTGGATCCGGTACCGAGGAGATCTGCC  
 GCC**CGCATCGCC**

ATGAAGCCAGTGTGGGTGCCACCCCTTCTGTGGATGCTACTGCTGGTGCCAGGCTGGGGCCGCCCGGA  
 AGGGGTCCCAGAAAGAGGCCTCCTTCTACTATGGAACCTTCCCTCTGGCTTCTCCTGGGCGTGGGCAG  
 TTCTGCCTACCAGACGGAGGGCGCCTGGGACCAGGACGGAAAGGCCTAGCATCTGGGACGTCTTCACA  
 CACAGTGGGAAGGGGAAAGTGTGGGAATGAGACGGCAGATGTAGCCTGTGACGGCTACTACAAGGTCC  
 AGGAGGACATCATTCTGCTGAGGAACTGCACGTCAACCACTACCGATTCTCCCTGTCTTGGCCCCGGCT  
 CCTGCCACAGGCATCCGAGCCGAGCAGGTGAACAAGAAGGGAATCGAATTCTACAGTGATCTTATCGAT  
 GCCCTTCTGAGCAGCAACATCACTCCCATCGTGACCTGCACCACTGGGATCTGCCACAGCTGCTCCAGG  
 TCAAAACGGTGGGTGGCAGAATGTGAGCATGGCCAACACTTTCAGAGACTACGCCAACCTGTGCTTTGA  
 GGCTTTGGGGACCGTGTGAAGCACTGGATCACGTTTCAGTGATCCTCGGCAATGCCAGAAAAAGGCTAT  
 GAGACGGGCCACCATGCGCCGGGCTGAAGCTCCGCGGCACCGGCTGTACAAGGAGCAGCACACCACATCA  
 TTAAGGCCACGCCAAAGCCTGGCATTCTATAACACCACGTGGCGCAGCAAGCAGCAAGGTCTGGTGGG  
 AATTTCAATTGAACTGTGACTGGGGGAACCTGTGGACATTAGTAACCCCAAGGACCTAGAGGCTGCCGAG  
 AGATACCTACAGTTCTGTCTGGGCTGGTTTGCACCCCAATTTATGCCGGTGACTACCCCAAGTCATGA  
 AGGACTACATTGGAAGAAAGAGTGCAGAGCAAGGCCTGGAGATGTCGAGGTTACCGGTGTTCTCACTCCA  
 GGAGAAGAGCTACATTAAGGCACATCCGATTTCTGGGATTAGGTCATTTACTACTCGGTACATCAGC  
 GAAAGGAACTACCCCTCCCGCCAGGGGCCAGCTACCAGAACGATCGTGACTTGTAGAGCTGGTTGACC  
 CAACTGGCCAGATCTGGGGTCTAAATGGCTATATTCTGTGCCATGGGGATTTAGGAGGCTCCTTAACTT  
 TGCTCAGACTCAATACGGTGATCCTCCCATATATGTGATGGAAAATGGAGCATCTCAAAAAATCCACTGT  
 ACTCAATTATGTGATGAGTGGAGAATCAATACCTTAAAGGATACATAAATGAAATGCTAAAAGCTATAA  
 AAGATGGTGCTAATAAAGGGGTATACTTCTGGTCTCTGTTGGATAAGTTTGAATGGGAGAAAGGATA  
 CTCAGATAGATATGGATTCTACTATGTTGAATTAACGACAGAAAATAAGCCTCGTATCCAAAGGCTTCA  
 GTTCAATATTACAAGAAGATTATCATTGCCAATGGGTTTCCCAATCCAAGAGAGGTGGAAAGTTGGTACC  
 TCAAAGCTTTGAAACTTGCTCTATCAACAATCAGATGCTTGCTGCAGAGCCCTTGCTAAGTCACATGCA  
 AATGGTTACGGAGATCGTGGTACCACTGTCTGCTCCCTGTGCTCCTCATCACTGCTGTCTACTAATG  
 CTCTCTGAGGAGGCAGAGC

**ACGCGT**ACGCGGCCGCTCGAGCAGAAACTCATCTCAGAAGAGGATCTGGCAGCAAATGATATCCTGGATT  
 ACAAGGATGACGACGATAAGGTTTAA

**Protein Sequence:**

>RC213528 representing NM\_207338  
 Red=Cloning site Green=Tags(s)

MKPVVATLLWMLLLVPRLGAARKGSPEEASFYYGTFFPLGFSWGVGSSAYQTEGAWDQDGKGPSIWDVFT  
 HSGKGVKLGNETADVACDGYKVEDIILLRELHVNHYRFSLSWPRLPTGIRAEQVNKKGIEFYSDLID  
 ALLSSNITPIVTLHHWDLPQLLVKYGGWQNVSMANYFRDYANLCEAFGDRVKHWITFSDPRMAEKGY  
 ETGHHAPGLKLRGTGLYKAAHHIIKAHAKAWHSYNTTWSKQQGLVGISLNCDWGEPVDISNPKDLEAAE  
 RYLQFCLGWANPIYAGDYPQVMKDYIGRKSAEQGLEMSRLPVFSLQEKSYIKGTSDFLGLGHFTTRYIT  
 ERNYPYSRQGPSYQNDRLIELVDPNWPDLGSKWLYSVPWGFRRLLNFAQTQYGDPPYVMENGASQKFGHC  
 TQLCDEWRIQYLKGINEMLKAIKDGANIKGYTSWSLLDKFEWEKGYSDRYGFYVVEFNDRNKPRYPKAS  
 VQYKKIIIANGFNPREVESWYLKALETCSINNQLAAEPLLSHMQMVTEIVVPTVCSLCVYLITAVLLM  
 LLLRRQS

**TR**TRPLEQKLISEEDLAANDILDYKDDDDKV

**Chromatograms:**

[https://cdn.origene.com/chromatograms/mk6272\\_a09.zip](https://cdn.origene.com/chromatograms/mk6272_a09.zip)

**Restriction Sites:**

Sgfl-Mlul

**Cloning Scheme:**

**ACCN:** NM\_207338

**ORF Size:** 1701 bp

**OTI Disclaimer:** Due to the inherent nature of this plasmid, standard methods to replicate additional amounts of DNA in E. coli are highly likely to result in mutations and/or rearrangements. Therefore, OriGene does not guarantee the capability to replicate this plasmid DNA. Additional amounts of DNA can be purchased from OriGene with batch-specific, full-sequence verification at a reduced cost. Please contact our customer care team at [custsupport@origene.com](mailto:custsupport@origene.com) or by calling 301.340.3188 option 3 for pricing and delivery.

The molecular sequence of this clone aligns with the gene accession number as a point of reference only. However, individual transcript sequences of the same gene can differ through naturally occurring variations (e.g. polymorphisms), each with its own valid existence. This clone is substantially in agreement with the reference, but a complete review of all prevailing variants is recommended prior to use. [More info](#)

**OTI Annotation:** This clone was engineered to express the complete ORF with an expression tag. Expression varies depending on the nature of the gene.

**Components:** The ORF clone is ion-exchange column purified and shipped in a 2D barcoded Matrix tube containing 10ug of transfection-ready, dried plasmid DNA (reconstitute with 100 ul of water).

- Reconstitution Method:**
1. Centrifuge at 5,000xg for 5min.
  2. Carefully open the tube and add 100ul of sterile water to dissolve the DNA.
  3. Close the tube and incubate for 10 minutes at room temperature.
  4. Briefly vortex the tube and then do a quick spin (less than 5000xg) to concentrate the liquid at the bottom.
  5. Store the suspended plasmid at -20°C. The DNA is stable for at least one year from date of shipping when stored at -20°C.

RefSeq: [NM\\_207338.4](#)

RefSeq Size: 2128 bp

RefSeq ORF: 1704 bp

Locus ID: 197021

UniProt ID: [Q6UWM7](#)

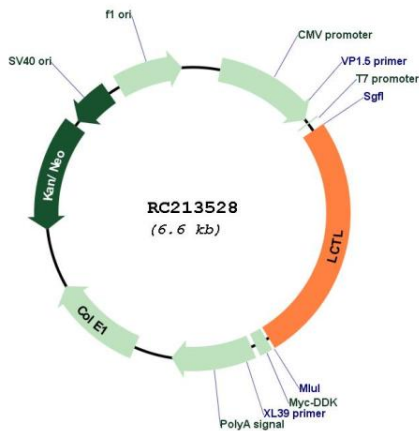
Cytogenetics: 15q22.31

Protein Families: Transmembrane

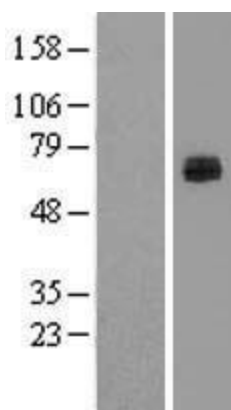
MW: 64.9 kDa

**Gene Summary:** This gene encodes a member of family 1 glycosidases. Glycosidases are enzymes that hydrolyze glycosidic bonds and are classified into families based on primary amino acid sequence. Most members of family 1 have two conserved glutamic acid residues, which are required for enzymatic activity. The mouse ortholog of this protein has been characterized and has a domain structure of an N-terminal signal peptide, glycosidase domain, transmembrane domain, and a short cytoplasmic tail. It lacks one of the conserved glutamic acid residues important for catalysis, and its function remains to be determined (PMID: 12084582). Alternative splicing results in multiple transcript variants. [provided by RefSeq, Jun 2013]

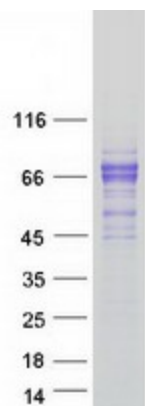
**Product images:**



Circular map for RC213528



Western blot validation of overexpression lysate (Cat# [LY403965]) using anti-DDK antibody (Cat# [TA50011-100]). Left: Cell lysates from untransfected HEK293T cells; Right: Cell lysates from HEK293T cells transfected with RC213528 using transfection reagent MegaTran 2.0 (Cat# [TT210002]).



Coomassie blue staining of purified LCTL protein (Cat# [TP313528]). The protein was produced from HEK293T cells transfected with LCTL cDNA clone (Cat# RC213528) using MegaTran 2.0 (Cat# [TT210002]).