

Product datasheet for RC213522

SH3GL3 (NM_003027) Human Tagged ORF Clone

Product data:

Product Type:	Expression Plasmids
Product Name:	SH3GL3 (NM_003027) Human Tagged ORF Clone
Tag:	Myc-DDK
Symbol:	SH3GL3
Synonyms:	CNSA3; EEN-B2; HsT19371; SH3D2C; SH3P13
Mammalian Cell Selection:	Neomycin
Vector:	pCMV6-Entry (PS100001)
E. coli Selection:	Kanamycin (25 ug/mL)
ORF Nucleotide Sequence:	>RC213522 representing NM_003027 Red=Cloning site Blue=ORF Green=Tags(s)

TTTTGTAATACGACTCACTATAGGGCGGCCGGAATTCGTCGACTGGATCCGGTACCGAGGAGATCTGCC
GCC**CGATCGC**C

ATGTCGGTGGCCGGGCTGAAGAAGCAGTTCACAAAGCCAGCCAGCTATTTAGTGAAAAATAAGTGGTG
CTGAAGGAACTAACTAGACGATGAATTTCTTGACATGGAAAGGAAAATAGATGTTACCAATAAAGTTGT
TGCAGAAATCTTTCAAAAACCACTGAATATCTTCAGCCAAATCCAGCATACAGAGCTAAGCTAGGAATG
CTGAACACTGTGTCGAAGATCCGAGGGCAGGTGAAGACCACAGGATACCCGCAGACGGAAGGCTTGCTGG
GGGACTGTATGCTGAAATACGGGAAGGAGCTCGGGGAAGACTCCACCTTTGGCAATGCATTGATAGAAGT
TGGTGAATCCATGAAGCTAATGGCTGAGGTGAAAGACTCTCTTGATATAATGTAAGCAAACTTTTATT
GATCCACTTCAGTTACTACAAGATAAAGATTTAAAAGAGATCGGGCATCACCTGAAAAAGCTGGAAGGCC
GCCGCCTGGATTACGATTATAAAAAGAAACGAGTAGGTAAAGATACCAGACGAAGAAGTCAGACAAGCGGT
AGAAAAATTTGAAGAGTCAAAGGAGTTGGCTGAAAGAAGCATGTTAACTTTTTAGAAAAATGATGTAGAA
CAAGTCAGCCAGTTGGCTGTGTTTCATAGAGGCAGCATTAGACTATCACAGACAGTCCACAGAGATTCTGC
AGGAGCTGCAGAGCAAGCTACAGATGCGAATATCAGCTGCATCCAGTGTCCCGAGACGAGAATAACAAGCC
AAGGCCTGTGAAAAGGAGTTCTAGTGAGCTCAATGGAGTTCCACCACCTCTGTAGTGAAGACGACAGGT
TCTAACATTCATGGACCAGCCCTGCTGTCGTGGTCTCTGACTTTGAGCCAGAAAACCAAGGAGAAT
TAGGATTTAAAGAAGGGACATCATTACATTAACCAATCAAATAGATGAAAACCTGGTATGAAGGAATGAT
ACACGGAGAATCGGGATTCTTCCCATAATTACGTGGAAGTGATCGTGCCTTTACCTCAG

ACGCGTACGCGGCCGCTCGAGCAGAACTCATCTCAGAAGAGGATCTGGCAGCAAATGATATCCTGGATT
ACAAGGATGACGACGATAAGGTTTAA



[View online »](#)

Protein Sequence: >RC213522 representing NM_003027
Red=Cloning site Green=Tags(s)

```
MSVAGLKKQFHKASQLFSEKISGAEGTKLDDEFIDMERKIDVTNKVVAEILSKTTEYLQPNPAYRAKLGMLNTVSKIRGQVKTGYPQTEGLLGDCMLKYGKELGEDSTFGNALIEVGESMKLMAEVKDSLIDINVKQTFIDPLQLLQDKDLKEIGHHLKKLEGRRLDYDYKKRVRGKIPDEEVRQAVEKFEESKELAERSMFNFLENDVEQVSQLAVFIEAALDYHRQSTEILQELQSKLQMRISAASSVPRREYKPRPVKRSSSELNGVSTTSVVKTTGSNIPMDQPCCRGLYDFEPENQGELGFKEGDIITLTNQIDENWYEGMIHGESSGFFPINYVEVIVPLPQ
```

TRTRPLEQKLISEEDLAANDILDYKDDDDKV

Chromatograms: https://cdn.origene.com/chromatograms/mg3154_g05.zip

Restriction Sites: SgfI-MluI

Cloning Scheme:



ACCN: NM_003027

ORF Size: 1041 bp

OTI Disclaimer: The molecular sequence of this clone aligns with the gene accession number as a point of reference only. However, individual transcript sequences of the same gene can differ through naturally occurring variations (e.g. polymorphisms), each with its own valid existence. This clone is substantially in agreement with the reference, but a complete review of all prevailing variants is recommended prior to use. [More info](#)

OTI Annotation: This clone was engineered to express the complete ORF with an expression tag. Expression varies depending on the nature of the gene.

Components: The ORF clone is ion-exchange column purified and shipped in a 2D barcoded Matrix tube containing 10ug of transfection-ready, dried plasmid DNA (reconstitute with 100 ul of water).

Reconstitution Method:

1. Centrifuge at 5,000xg for 5min.
2. Carefully open the tube and add 100ul of sterile water to dissolve the DNA.
3. Close the tube and incubate for 10 minutes at room temperature.
4. Briefly vortex the tube and then do a quick spin (less than 5000xg) to concentrate the liquid at the bottom.
5. Store the suspended plasmid at -20°C. The DNA is stable for at least one year from date of shipping when stored at -20°C.

RefSeq: [NM_003027.5](#)

RefSeq Size: 2015 bp

RefSeq ORF: 1044 bp

Locus ID: 6457

UniProt ID: [Q99963](#)

Cytogenetics: 15q25.2

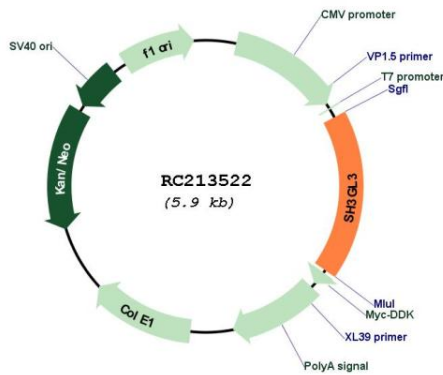
Domains: SH3, BAR

Protein Pathways: Endocytosis

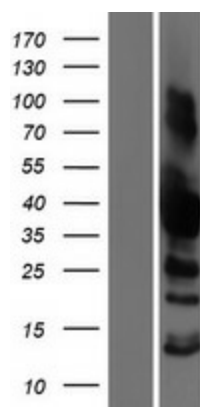
MW: 39.1 kDa

Gene Summary: Implicated in endocytosis. May recruit other proteins to membranes with high curvature (By similarity).[UniProtKB/Swiss-Prot Function]

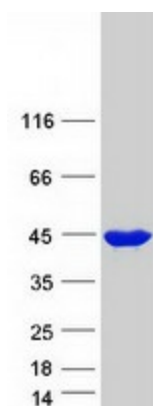
Product images:



Circular map for RC213522



Western blot validation of overexpression lysate (Cat# [LY418948]) using anti-DDK antibody (Cat# [TA50011-100]). Left: Cell lysates from untransfected HEK293T cells; Right: Cell lysates from HEK293T cells transfected with RC213522 using transfection reagent MegaTran 2.0 (Cat# [TT210002]).



Coomassie blue staining of purified SH3GL3 protein (Cat# [TP313522]). The protein was produced from HEK293T cells transfected with SH3GL3 cDNA clone (Cat# RC213522) using MegaTran 2.0 (Cat# [TT210002]).