

## Product datasheet for **RC213520**

### **KLHL15 (NM\_030624) Human Tagged ORF Clone**

#### **Product data:**

Product Type:	Expression Plasmids
Product Name:	KLHL15 (NM_030624) Human Tagged ORF Clone
Tag:	Myc-DDK
Symbol:	KLHL15
Synonyms:	HEL-S-305
Mammalian Cell Selection:	Neomycin
Vector:	pCMV6-Entry (PS100001)
E. coli Selection:	Kanamycin (25 ug/mL)



[View online »](#)

**ORF Nucleotide Sequence:**

>RC213520 ORF sequence  
 Red=Cloning site Blue=ORF Green=Tags(s)

TTTTGTAATACGACTCACTATAGGGCGGCCGGAATTCGTCGACTGGATCCGGTACCGAGGAGATCTGCC  
 GCC**CGCATCGCC**

ATGGCAGGGGACGTGGAAGGATTCTGTCTCCATCCACGACACCAGTGTCTCTGCTGGTTTCAGAGCAC  
 TGTATGAGGAGGATTGCTTCTTGATGTCACTCTGGTTATTGAAGATCATCAGTTCCAGGCCATAAAGC  
 ACTCTTGCCACCCAGAGTGATTACTTCAGAATTATGTTTACTGCAGACATGAGGGAACGAGATCAGGAC  
 AAAATTCATTTAAAAGGTCTAACAGCTACCGGTTTCAGCCATGCTCCTGCAATTTATGACTATGAACTA  
 TAGAGCTGAGTATGAATACCGTTCATGAGATTCTTCAGGCTGCCATGTATGTTCAACTTATAGAAGTGGT  
 GAAGTTCTGCTGCTCTTTTCTCTAGCGAAGATCTGCCTAGAAAATTGTGCAGAAATTATGAGACTCTTA  
 GATGATTCGGCGTAAACATCGAGGGAGTCAGGGAGAAGTTAGACACCTTCTGCTAGACAACTTTGTGC  
 CACTCATGTCTAGGCCTGACTTTCTGTCCTATCTGAGCTTGTGAGAAGCTCATGTCTTACTTGATAATGA  
 TCATCTGAGCAGGTTCCAGAGATAGAGCTGTACGAGGCTGTGCAGTCTTGGCTGCGGCATGATAGAAGA  
 CGCTGGAGACATACCGATACCATCATTCAAGAAATCCCGTTTTGCTTGTGACCCCAACAGCGTTTTTTG  
 AGAAGGTTAAGACATCAGAATTTATAGATACTCCCGACAGCTCCGTTACGAAGTTGACCAAGCATTGAA  
 TTAATTTTCAAGATGTTCCACGACAGCCTTTGTTGGATAGAAGTCAAGCCGCATCCGTTCTGCAAAAACCG  
 CAAACTACAGTATTTTCGAGGAATGATTGGACATAGCATGGTTAACAGTAAAATACTTCTCTTAAAGAAAC  
 CAAGAGTCTGGTGGGAGCTAGAAGGCCACAAGTACCTCTGCGACCTGACTGCCTTGCTATCGTCAATAA  
 TTTTGTCTTCTGTTAGGCGGGGAAGAGCTGGGCCCGGATGGTGAATCCATGCTTCTTCCAAAGTATTC  
 AGGTATGACCCGAGACAGAACTCTGGCTGCAGATGGCAGATATGTCTGTACCACGCTCTGAATTTGCTG  
 TAGGTGTTATTGGGAAGTTTATTTACGCGTAGCAGGCAGAACCCAGAGATGAGACTTTCTATTCAACTGA  
 GAGATATGACATACCAACGATAAATGGGAATTTGTGGATCCTTATCCAGTTAACAAATATGGACATGAG  
 GGGACAGTGCTCAATAACAAATTGTTTATCACCGTGGAATCACCTCATCTTCCACCTCCAAGCAAGTGT  
 GCGTGTGTTGACCCAGCAAGAAGGGACCATAAGAACACGGACCAGGAGAACTCAAGTGGTTACCAACTG  
 TTGGGAGAATAAGAGCAAGATGAATTACGCGAGATGCTTTCACAAGATGATTTCTTACAATGGCAAGCTT  
 TATGTCTTCGGTGGTGTCTGTGTGATCTTGAGGCCTCTTTCGAATCTCAGGGATGCCCTTCTACAGAAG  
 TATAACAACCCAGAGACTGATCAGTGGACCATCTGGCATCCATGCCGATTGGTAGAAGTGGCCATGGTGT  
 GACTGTGCTGGACAAACAATAATGTTCTTGGAGGCCTTGTATAATGGTCATTACAGCGATTCCATC  
 CTCACCTTTGATCCGGATGAAAACAAGTGAAGGAAGATGAGTACCCTCGGATGCCCTGCAAGCTGGATG  
 GTTACAAGTATGCAACCTGCATTTTCCGACTATGACTGGATGAGGTCAGGCGTTGCAACT

**ACGCGT**ACGCGGCCGCTCGAGCAGAAACTCATCTCAGAAGAGGATCTGGCAGCAAATGATATCCTGGATT  
 ACAAGGATGACGACGATAAGGTTTAA

**Protein Sequence:**

>RC213520 protein sequence  
 Red=Cloning site Green=Tags(s)

MAGDVEGFCSSIHDTSVSAGFRALYEEGLLLDVTLVIEDHQFQAHKALLATQSDYFRIMFTADMRRERDQD  
 KIHLLKGLTATGFSHVLQFMYYGTIELSMNTVHEILQAAMYVQLIEVVKFCCSFLAKICLENCAEIMRLL  
 DDFGVNIEGVREKLDTFLLDNFVPLMSRPDLSYLSFEKLMSYLDNDHLSRFPEIELYEAVQSWLRHRRR  
 RWRHTDTIIQNIQIRFLMTPTSVFEKVKTSEFYRYSRQLRYEVDQALNYFQNVHQQLPDDMKSSRIRSAKP  
 QTTVFRGMIGHSMVNSKILLKPRVWWELEGPVPLRPDCLAIVNNFVFLGGEELGPDGEFHASSKVF  
 RYDPRQNSWLQADMSVPRSEFAVGVIGKFIYAVAGRTRDETFFYSTERYDITNDKWEFVDPYPVVKYHGE  
 GTVLNNKLFITGGITSSSTSKQVCVDFPSKEGTIEQRTRRTQVVTNWCWENKSKMNYARCFHKMISYNGKL  
 YVFGGVCVILRASFSQGPCSTEYVNPETDQWTILASMPIGRSGHGVTVLQKIMVLGGLCYNGHYSDSI  
 LTFDPDENKWEDEYPRMPCKLDGLQVCNLHFPDYVLDDEVRRCN

**TRTRPLEQKLISEEDLAANDILDYKDDDDKV**

**Chromatograms:**

[https://cdn.origene.com/chromatograms/mk6670\\_f02.zip](https://cdn.origene.com/chromatograms/mk6670_f02.zip)

Restriction Sites: SgfI-MluI

Cloning Scheme:



ACCN: NM\_030624

ORF Size: 1813 bp

OTI Disclaimer: The molecular sequence of this clone aligns with the gene accession number as a point of reference only. However, individual transcript sequences of the same gene can differ through naturally occurring variations (e.g. polymorphisms), each with its own valid existence. This clone is substantially in agreement with the reference, but a complete review of all prevailing variants is recommended prior to use. [More info](#)

OTI Annotation: This clone was engineered to express the complete ORF with an expression tag. Expression varies depending on the nature of the gene.

Components: The ORF clone is ion-exchange column purified and shipped in a 2D barcoded Matrix tube containing 10ug of transfection-ready, dried plasmid DNA (reconstitute with 100 ul of water).

- Reconstitution Method:
1. Centrifuge at 5,000xg for 5min.
  2. Carefully open the tube and add 100ul of sterile water to dissolve the DNA.
  3. Close the tube and incubate for 10 minutes at room temperature.
  4. Briefly vortex the tube and then do a quick spin (less than 5000xg) to concentrate the liquid at the bottom.
  5. Store the suspended plasmid at -20°C. The DNA is stable for at least one year from date of shipping when stored at -20°C.

RefSeq: [NM\\_030624.3](#)

RefSeq Size: 6290 bp

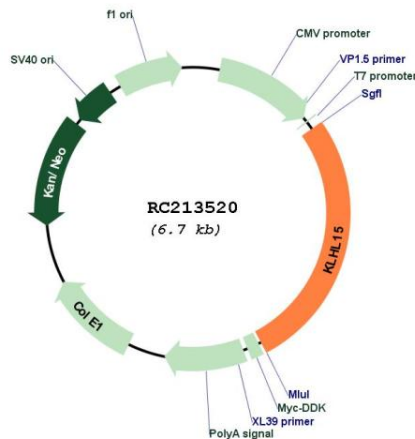
RefSeq ORF: 1815 bp

Locus ID: 80311

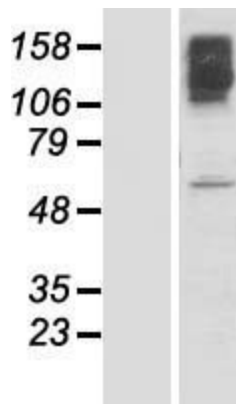
UniProt ID: [Q96M94](#)  
 Cytogenetics: Xp22.11  
 MW: 69.8 kDa

**Gene Summary:** This gene encodes a member of the kelch-like family of proteins that share a common domain structure consisting of an N-terminal broad-complex, tramtrack, bric-a-brac/poxvirus and zinc finger domain and C-terminal kelch repeat motifs. The encoded protein may be involved in protein ubiquitination and cytoskeletal organization. [provided by RefSeq, Apr 2009]

**Product images:**



Circular map for RC213520



Western blot validation of overexpression lysate (Cat# [LY410798]) using anti-DDK antibody (Cat# [TA50011-100]). Left: Cell lysates from untransfected HEK293T cells; Right: Cell lysates from HEK293T cells transfected with RC213520 using transfection reagent MegaTran 2.0 (Cat# [TT210002]).