

Product datasheet for **RC213518**

COBRA1 (NELFB) (NM_015456) Human Tagged ORF Clone

Product data:

Product Type:	Expression Plasmids
Product Name:	COBRA1 (NELFB) (NM_015456) Human Tagged ORF Clone
Tag:	Myc-DDK
Symbol:	COBRA1
Synonyms:	COBRA1; NELF-B
Mammalian Cell Selection:	Neomycin
Vector:	pCMV6-Entry (PS100001)
E. coli Selection:	Kanamycin (25 ug/mL)



[View online »](#)

ORF Nucleotide Sequence:

>RC213518 representing NM_015456
 Red=Cloning site Blue=ORF Green=Tags(s)

TTTTGTAATACGACTCACTATAGGGCGGCCGGAATTCGTCGACTGGATCCGGTACCGAGGAGATCTGCC
 GCC**CGGATCGCC**

ATGTTTCGGGGCTGCAGGACCTGGGCGTGGCCAACGGCGAGGACCTGAAGGAGACCTGACCAACTGCA
 CGGAGCCGCTCAAGGCCATCGAGCAGTTCAGACAGAGAATGGTGTGCTGCTGCCATCTCTTCAGTCAGC
 CCTCCCCTTCTTGACCTGCACGGGACGCCGGCTGGAGTTCACCAGTCGGTATTTCGATGAGCTGCGG
 GACAAGCTGCTGGAGCGAGTGTAGCCATCGCTTCGGAGGGGAAGGCTGAGGAAAGGTACAAGAAGCTGG
 AAGACCTTCTGGAGAAGAGCTTTTCTCTGGTGAAGATGCCGTCCCTGCAGCCCGTGGTGTGCGTCAT
 GAAGCACCTGCCAAGGTTCCGGAGAAAAAAGTGAAGCTGGTTATGGCTGACAAGGAGCTGTATCGAGCC
 TGGCCGCTGGAGGTGAAGCGGCAGATCTGGCAAGACAACCAGGCCCTCTTCGGGGACGAGGTTTCCCAC
 TCCTGAAGCAGTACATCCTGGAGAAGGAGAGCGCTCTCTTCAGTACAGAGCTCTCTGTCTGCACAACTT
 TTTAGTCTTCCCCAAGACCAGGCGCCAGGGCGAGGTGGTGCAGCGGCTGACGCGGATGGTGGGGAAG
 AACGTGAAGCTGTACGACATGGTGTGAGTTCGCGCACGCTCTTCTGCGCACGCGGAATGTGCACT
 ACTGCACGCTGCGGGCTGAGCTGCTCATGTCCCTGCACGACCTGGACGTGGGTGAAATCTGCACCGTGG
 CCCGTGCCACAAGTTCACCTGGTGCCTGGACGCTGCATCCGAGAGCGGTTCTGGACAGCAAGAGGGCG
 CGGAGCTGCAGGGGTTTCTCGATGGCGTCAAGAAGGGCCAGGAGCAGGTGCTGGGGACCTGTCCATGA
 TCCTGTGTGACCCCTTCGCCATCAACACGCTGGCACTGAGCACAGTCAGGCACCTGCAGGAGCTGGTCGG
 CCAGGAGACACTGCCAGGGACAGCCCCGACCTCTGCTGCTGCTCCGGCTGCTGGCGTGGGCCAGGGA
 GCCTGGGACATGATCGACAGCCAGGTCTCAAGGAGCCCAAGATGGAGGTAGAGCTATCACCAGGTTCC
 TCCCGATGCTCATGTCTTCTGGTGGATGACTACACTTCAATGTGGATCAGAACTCCGGCTGAGGA
 GAAAGCCCAAGTCTCATATCCAAACACACTTCCGAAAGCTTCACTAAGTTTCTGCAGGACGAGCGCATG
 GCCTGCGAGGTGGGGCTGTACTACGTCCTGCACATCACCAGCAGAGGAACAAGAACGCGCTCTCCGCC
 TGCTGCCCGGGCTGGTGGAGACCTTTGGCGACTTGGCCTTTGGCGACATCTTCTCCACCTGCTCACGGG
 CAACCTTGGCGTCTGGCCGACGAATTTGCCCTTGGAGACTTCTGCAGCAGCCTCTTCGATGGTCTTCTC
 CTCACCGCTCTCAAGGAAGGAGAACGTGCACCGGCACGCGCTGCGGCTCTCATTACCTGCACCCCA
 GGGTGGCCCCGTAAAGCTGGAGGCGTTCAGAAAGCCCTGGAGCCTACAGGCCAGAGCGGAGAGGCAGT
 GAAGGAGCTTTACTCCAGCTCGCGGAGAAGCTGGAACAGCTGGATCACCAGGAGCCAGCCCGGCACAG
 GCTGCGGAGACGCGGCCCTGGAGCTGCCCTCCCAGCGTGCCCGCCCTGCCCGCTC

ACGCGTACGCGGGCCGCTCGAGCAGAAACTCATCTCAGAAGAGGATCTGGCAGCAAATGATATCCTGGATT
 ACAAGGATGACGACGATAAGGTTTAA

Protein Sequence:

>RC213518 representing NM_015456
 Red=Cloning site Green=Tags(s)

MFAGLQDLGVANGEDLKETLTNCTEPLKAIEQFTENGVLLPSLQSAFPFLDLHGTPRLEFHQSVFDEL
 DKLLERVSAIASEGKAERYKLELDLEKSFSLVKMPSLQPVVMCVMKHLPKVPEKLLKLMADKELYRA
 CAVEVKRQIWQDNQALFGDEVSPLLKQYILEKESALFSTELSVLHNFFSPSPKTRRQGEVVQRLTRMVGK
 NVKLYDMVLQFLRTLFLRTRNVHYCTLRAELMSLHDLVDGEICTVDPCHKFTWCLDACIRERFVDSKRA
 RELQGFLDGVKKGQEQVLGDL SMILCDPFAINTLALSTVRHLQELVGQETLPRDSPDLLLRLALGQG
 AWDMIDSQVFKPKMEVELITRFLPMLMSFLVDDYTFNVDQKLPAAEKAPVSYPNLTPESFTKFLQEQR
 ACEVGLYYVLHITKQRNKNALLRLLPGLVETFGDLAFGDI FLHLLTGNLALLADEFALDFCSSLFDGFF
 LTASPRKENVHRHALRLLIHLHPRVAPSKLEALQKALEPTQSGEAVKELYSQLGEKLEQLDHRKPSPAQ
 AAETPALELPLPSVPAPAPL

TRTRPLEQKLISEEDLAANDILDYKDDDDKV

Chromatograms:

https://cdn.origene.com/chromatograms/mk8024_c01.zip

Restriction Sites:

Sgfl-Mlul

Cloning Scheme:


ACCN: NM_015456

ORF Size: 1740 bp

OTI Disclaimer: The molecular sequence of this clone aligns with the gene accession number as a point of reference only. However, individual transcript sequences of the same gene can differ through naturally occurring variations (e.g. polymorphisms), each with its own valid existence. This clone is substantially in agreement with the reference, but a complete review of all prevailing variants is recommended prior to use. [More info](#)

OTI Annotation: This clone was engineered to express the complete ORF with an expression tag. Expression varies depending on the nature of the gene.

Components: The ORF clone is ion-exchange column purified and shipped in a 2D barcoded Matrix tube containing 10ug of transfection-ready, dried plasmid DNA (reconstitute with 100 ul of water).

- Reconstitution Method:**
1. Centrifuge at 5,000xg for 5min.
 2. Carefully open the tube and add 100ul of sterile water to dissolve the DNA.
 3. Close the tube and incubate for 10 minutes at room temperature.
 4. Briefly vortex the tube and then do a quick spin (less than 5000xg) to concentrate the liquid at the bottom.
 5. Store the suspended plasmid at -20°C. The DNA is stable for at least one year from date of shipping when stored at -20°C.

RefSeq: [NM_015456.3](#), [NP_056271.2](#)

RefSeq Size: 2622 bp

RefSeq ORF: 1887 bp

Locus ID: 25920

UniProt ID: [Q8WX92](#)

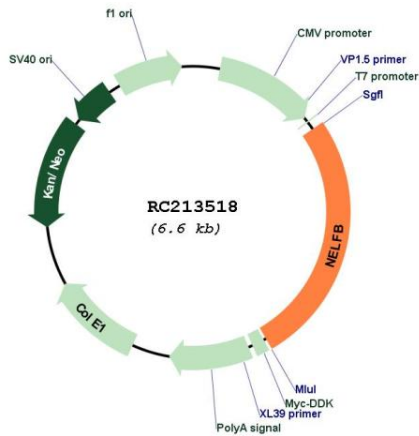
Cytogenetics: 9q34.3

Protein Families: Transcription Factors

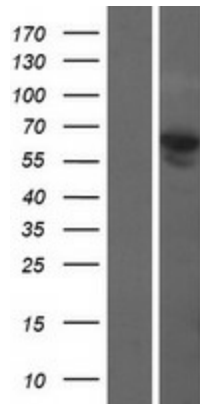
MW: 65.5 kDa

Gene Summary: NELFB is a subunit of negative elongation factor (NELF), which also includes NELFA (WHSC2; MIM 606026), either NELFC or NELFD (TH1L; MIM 605297), and NELFE (RDBP; MIM 154040). NELF acts with DRB sensitivity-inducing factor (DSIF), a heterodimer of SPT4 (SUPT4H1; MIM 603555) and SPT5 (SUPT5H; MIM 602102), to cause transcriptional pausing of RNA polymerase II (see MIM 180660) (Narita et al., 2003 [PubMed 12612062]). [supplied by OMIM, Mar 2008]

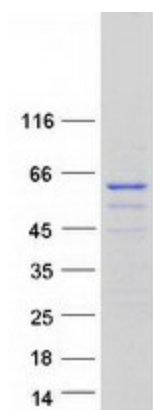
Product images:



Circular map for RC213518



Western blot validation of overexpression lysate (Cat# [LY414537]) using anti-DDK antibody (Cat# [TA50011-100]). Left: Cell lysates from untransfected HEK293T cells; Right: Cell lysates from HEK293T cells transfected with RC213518 using transfection reagent MegaTran 2.0 (Cat# [TT210002]).



Coomassie blue staining of purified NELFB protein (Cat# [TP313518]). The protein was produced from HEK293T cells transfected with NELFB cDNA clone (Cat# RC213518) using MegaTran 2.0 (Cat# [TT210002]).