

Product datasheet for **RC213516**

TBL1 (TBL1X) (NM_005647) Human Tagged ORF Clone

Product data:

Product Type:	Expression Plasmids
Product Name:	TBL1 (TBL1X) (NM_005647) Human Tagged ORF Clone
Tag:	Myc-DDK
Symbol:	TBL1
Synonyms:	CHNG8; EBI; SMAP55; TBL1
Mammalian Cell Selection:	Neomycin
Vector:	pCMV6-Entry (PS100001)
E. coli Selection:	Kanamycin (25 ug/mL)



[View online »](#)

ORF Nucleotide Sequence:

>RC213516 representing NM_005647
 Red=Cloning site Blue=ORF Green=Tags(s)

TTTTGTAATACGACTCACTATAGGGCGGCCGGAATTCGTCGACTGGATCCGGTACCGAGGAGATCTGCC
 GCC**CGCATCGCC**

ATGACCGAGCTCGCTGGCGCCTTTCATCGTGCTGCCACCGCCCTGCAGGAAGAGGGCCATGCAGTCAG
 TCTTGCACCACTTCAACGTTTTCGAGGGAGAGAGGGTGGTTCCCACTTCATCAACACCTCATCGCCGCG
 AGGTGAGGCTAAGATGAGCATAACCAGTGACGAGGTGAACCTTCTGGTGTATCGGTATCTCCAGGAGTCA
 GGTTTTTCCCACTCGGCTTTCACGTTTGGGATTGAGAGCCACATCAGCCAGTCCAACATCAATGGGACGC
 TAGTGCCACCGCGCCCTCATCTCCATTCTCCAGAAGGGCTGCAGTATGTAGAGGCCGAGATCAGTAT
 CAACGAGGATGGCACAGTGTTCGACGGCCGCCCATAGAGTCCCTGTCACTGATAGACGCCGTGATGCC
 GACGTGGTGCAGACGGCAGCAGGCATTCGAGAGAAGCTCGCTCAGCAGCAAGCCAGTGCAGCGCCGCGG
 CGGCGGCTGCGGCCACGGCAGCAGCGACAGCAGCCACCACGACCTCAGCCGGCGTTTCCACCAAAATCC
 ATCGAAGAACAGAGAGGCCACGGTGAATGGGAAGAGAACAGAGCACATTCAGTCAATAATCACGCGAAG
 CCAATGGAAATAGATGGAGAGGTTGAGATTCCATCCAGCAAAGCCACAGTCCCTTCGGGGCCATGAGTCTG
 AGGTGTTCAATTTGTGCTGGAATCCTGTCAAGTATTTGCTAGCCTCCGGATCTGGAGACTCAACTGCAAG
 GATATGGAACCTGAATGAGAATAGCAACGGGGGCTCCACCCAGCTCGTGTGAGGCACTGTATACGAGAG
 GGGGGCCATGACGTCCCGAGTAACAAAGACGTCACCTCACTGGACTGGAATACCAATGGAACACTTTGG
 CTACGGGTTTCATATGACGGTTTTGCAAGAATATGGACGGAAGATGGTAACCTGGCCAGCACCTTAGGCCA
 ACATAAAGGCCCATCTTTGCCTTGAAATGGAACCGAAAGGGGAATTACATTTGAGTGTGGTGTAGAC
 AAAACAACAATAATTTGGGATGCCACACAGGAGAAGCCAAACAGCAGTTTCTTTTCATTACAGCCCTG
 CCCTTGATGTGGACTGGCAGAACAACAGCACCTTTGCCCTGTAGCACAGACATGTGTATCCATGATGTG
 CAGGCTCGGCTGTGACCGCCAGTCAAACCTTCCAGGGACACACAACGAGGTCAACGCCATCAATGG
 GATCCGCTGGAATGTTGCTGGCATCCTGCTCGGATGACATGACATTGAAGATCTGGAGCATGAAACAGG
 AGGTGTGCATCCATGATCTTCAGGCTCACATAAAGAGATCTACACCATCAAGTGGAGCCCCACTGGGCC
 CGCCACCAGCAACCCAACTCCAACATCATGTTGGCAAGTGTTCGTTTATTCTACGGTGCAGTGTGG
 GACATAGAACGAGGCGTCTGCACCCACAGCTCACGAAGCATCAGGAGCCTGTCTATAGCGTAGCTTTCA
 GCCCTGATGGGAAGTACTTGGCCAGTGGATCCTTCGACAAGTGCCTCCATATCTGGAATACTCAGAGTGG
 AAATCTTGTCCACAGTACCGAGGCACTGGCGGCATCTTCGAGGTGTGCTGGAACGCCCGAGGAGACAAA
 GTGGGTGCCAGCGCTCCGACGGCTCTGTGTGTGTTTTGGATCTGCGGAAG

ACGCGTACGCGGGCCGCTCGAGCAGAAACTCATCTCAGAAGAGGATCTGGCAGCAAATGATATCCTGGATT
 ACAAGGATGACGACGATAAGGTTTAA

Protein Sequence:

>RC213516 representing NM_005647
 Red=Cloning site Green=Tags(s)

MTELAGASSSCHRPAGRGAMQSVLHHFQRLRGREGGSHFINTSSPRGEAKMSITSDEVNFLVYRYLQES
 GFSHSAFTFGIESHISQSNINGTLVPPAALISILQKGLQYVEAEISINEDGTVFDGRPIESLSLIDAVMP
 DVVQTRQAFREKLAQQQASAAAAATAAATAATTSAGVSHQNP SKNREATVNGEENRAHSVNNHAK
 PMEIDGEVEIPSSKATVLRGHESEVFCAWNPDLLASGSGDSTARIWNLNENSGGSTQLVLRHCIRE
 GGHDVPSNKDVTSLDWTNGTLLATGSYDGFARIWTEGDLASTLQHKGP I FALKWNRKGN Y ILSAGVD
 KTTIIWDAHTGEAKQFPFHSAPALDWDQNNTFASCSTDMCIHVCRLGCDRPVKTFQGH TNEVNAIKW
 DPSGMLLASCDDMTLKIWSMKQEVCIHDLQAHNKEIYTIKWSPTGPATSNPNSNIMLASASFDSTVRLW
 DIERGVTHTLTKHQEPVYSVAFSPDGKYLASGSFDKCVHIWNTQSGNLVHSYRGTGGIFEVCWNARGDK
 VGASASDGSVCVLDLRK

TRTRPLEQKLISEEDLAANDILDYKDDDDKV

Chromatograms:

https://cdn.origene.com/chromatograms/mk6494_d03.zip

Restriction Sites:

Sgfl-Mlul

Cloning Scheme:


ACCN: NM_005647

ORF Size: 1731 bp

OTI Disclaimer: The molecular sequence of this clone aligns with the gene accession number as a point of reference only. However, individual transcript sequences of the same gene can differ through naturally occurring variations (e.g. polymorphisms), each with its own valid existence. This clone is substantially in agreement with the reference, but a complete review of all prevailing variants is recommended prior to use. [More info](#)

OTI Annotation: This clone was engineered to express the complete ORF with an expression tag. Expression varies depending on the nature of the gene.

Components: The ORF clone is ion-exchange column purified and shipped in a 2D barcoded Matrix tube containing 10ug of transfection-ready, dried plasmid DNA (reconstitute with 100 ul of water).

Reconstitution Method:

1. Centrifuge at 5,000xg for 5min.
2. Carefully open the tube and add 100ul of sterile water to dissolve the DNA.
3. Close the tube and incubate for 10 minutes at room temperature.
4. Briefly vortex the tube and then do a quick spin (less than 5000xg) to concentrate the liquid at the bottom.
5. Store the suspended plasmid at -20°C. The DNA is stable for at least one year from date of shipping when stored at -20°C.

Note: Plasmids are not sterile. For experiments where strict sterility is required, filtration with 0.22um filter is required.

RefSeq: [NM_005647.4](#)

RefSeq Size: 5886 bp

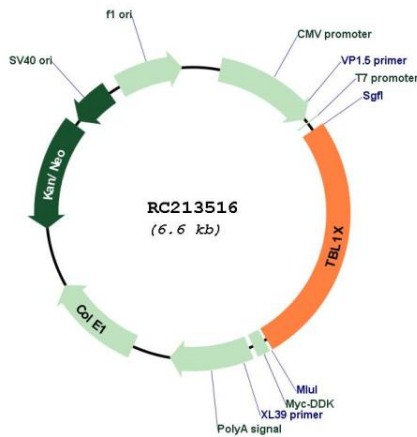
RefSeq ORF: 1734 bp

Locus ID: 6907

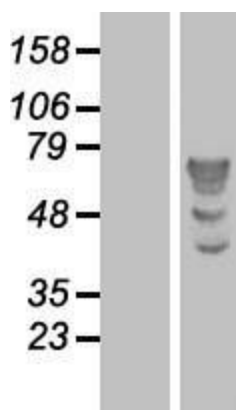
UniProt ID: [O60907](#)
Cytogenetics: Xp22.31-p22.2
Domains: WD40, LisH
Protein Families: Transcription Factors
Protein Pathways: Wnt signaling pathway
MW: 62.3 kDa

Gene Summary: The protein encoded by this gene has sequence similarity with members of the WD40 repeat-containing protein family. The WD40 group is a large family of proteins, which appear to have a regulatory function. It is believed that the WD40 repeats mediate protein-protein interactions and members of the family are involved in signal transduction, RNA processing, gene regulation, vesicular trafficking, cytoskeletal assembly and may play a role in the control of cytotypic differentiation. This encoded protein is found as a subunit in corepressor SMRT (silencing mediator for retinoid and thyroid receptors) complex along with histone deacetylase 3 protein. This gene is located adjacent to the ocular albinism gene and it is thought to be involved in the pathogenesis of the ocular albinism with late-onset sensorineural deafness phenotype. Four transcript variants encoding two different isoforms have been found for this gene. This gene is highly similar to the Y chromosome TBL1Y gene. [provided by RefSeq, Nov 2008]

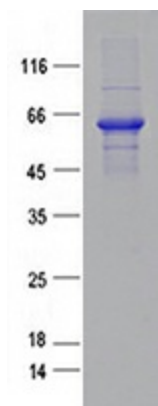
Product images:



Circular map for RC213516



Western blot validation of overexpression lysate (Cat# [LY427964]) using anti-DDK antibody (Cat# [TA50011-100]). Left: Cell lysates from untransfected HEK293T cells; Right: Cell lysates from HEK293T cells transfected with [RC226915] using transfection reagent MegaTran 2.0 (Cat# [TT210002]).



Coomassie blue staining of purified TBL1X protein (Cat# [TP313516]). The protein was produced from HEK293T cells transfected with TBL1X cDNA clone (Cat# RC213516) using MegaTran 2.0 (Cat# [TT210002]).