

Product datasheet for RC213515

NLRP9 (NM_176820) Human Tagged ORF Clone

Product data:

Product Type:	Expression Plasmids
Product Name:	NLRP9 (NM_176820) Human Tagged ORF Clone
Tag:	Myc-DDK
Symbol:	NLRP9
Synonyms:	CLR19.1; NALP9; NOD6; PAN12
Mammalian Cell Selection:	Neomycin
Vector:	pCMV6-Entry (PS100001)
E. coli Selection:	Kanamycin (25 ug/mL)
ORF Nucleotide Sequence:	>RC213515 representing NM_176820 Red=Cloning site Blue=ORF Green=Tags(s)

TTTTGTAATACGACTCACTATAGGGCGGCCGGAATTCGTCGACTGGATCCGGTACCGAGGAGATCTGCC
GCC**CGATCGCC**

ATGGCAGAATCTTTTTTTTCGGATTTTGGCTTGTGTGGTATCTGAAGGAGCTCAGAAAGGAAGATTTT
GGAAATTAAGGAGCTCCTCAAACAACCTTTGGAGAAATTTGAACTCAAGCCAATCCCCTGGGCTGAGCT
GAAGAAGGCTCCAAGAAGATGTAGCAAAGCTGCTGGACAAACATTACCCAGGAAAGCAGGCATGGGAG
GTAACACTGAACCTGTTTCTACAGATCAATAGGAAAGATCTCTGGACAAAGGCTCAGGAAGAGATGAGAA
ATAAGCTAAACCCATACAGAAAGCATATGAAGGAAACATTTCAACTCATATGGGAGAAGGAAACCTGTCT
TCACGTCCTGAGCATTCTACAAAGAAACCATGAAAAATGAGTATAAAGAATTGAATGACGCATATACT
GCTGCGGCTAGACGACACACTGTGGTCTGGAAGGTCCTGATGGAATTGGAAAAACAACCTTTTTAAGAA
AAGTGATGTTGGACTGGGCAGAGGGAACTTATGGAAGGACAGGTTACATTTGTGTTTTCTCAATGT
CTGTGAAATGAACGGTATCGCAGAGACCAGCTTACTGGAGCTCCTCTCTAGGGACTGGCCGGAGTCTTCA
GAGAAGATCGAAGACATTTTTCCAGCCAGAGAGAATTTGTTTCATCATGGATGGCTTTGAGCAACTGA
AGTTTAACTTACAACCTAAGGCTGACTTGAGCGATGATTGGAGGCAGCGGAGCCAATGCCAATTATCCT
GAGCAGTTTGTGCAAAAAAAGATGCTTCCAGAATCCTCTCTCCTTATTGCATTAGGAAAACCTGGCTATG
CAAAAACACTATTTTATGTTGCGGCATCCAAAACCTATAAAGCTTTAGGATTCAGTGAATCTGAAAAGA
AGTCGTATTTCTCCTACTTCTTTGGTGAGAAGAGCAAAGCCCTGAAAGTCTTCAATTTTGTGAGAGATAA
TGGGCCGCTGTTTATCTGTGCCATAATCCCTTACGTGCTGGTGGTCTGTACTTGTGTGAAACAGAGG
CTAGAGAGGGGAGAAGACCTTGAATAAAGCTCCAAAACACCACCTATTTATATGCATCCTTTTTAACAA
CTGTATTCAAAGCAGGAAGTCAGAGTTTTCCACCTAAGGTGAACAGAGCCCGACTAAAAAGCCTGTGTGC
TTTGGCTGCAGAGGGAATTTGGACATATACATTTGTATTTTCCATGGGGATCTCCGGAGGAATGGGTTA
TCTGAGTCTGAGGCGTGATGTGGTGGTATGAGACTCCTCAAAGGAGAGGGGACTGTTTTGCCTTCA
TGCATCTGTGTATCCAAGAGTTTTGTGCCCATGTTTTATTTGCTCAAACGACCCAAAGACGATCTTAA
CCCGCCATTGGAAGCATAACCCAGCTTGAAGAGCAAGTGTGGTTCAGCCTCAAACCTCTTGACCCAG



[View online >](#)

GTGGGGATATTCATGTTTGAATTTCAACAGAAGAAATCGTCAGCATGCTGGAGACCTCCTTTGGTTTTTC
 CACTGTCAAAGACCTAAAGCAGGAAATAACCCAAATGCCTTAAAAGTTTAAAGTCAATGTGAAGCTGATAG
 GGAAGCCATAGCTTTCCAGGAATTCATTGGTTTGGTTGAAACTCAGGAAAAAGAATTTGTAACCAAA
 GTGATGAATTTCTTTGAAGAAGTTTTCATTTATATTGGTAACATAGAACATTTGGTAATAGCTTCATTCT
 GCCTGAAGCATTGTCAACATTTAACGACACTTCGCATGTGTGTGGAGAATATCTTCCAGATGACTCAGG
 ATGCATCTCAGATTACAATGAGAAGCTCGTCTACTGGCGGGAGCTTTGCTCAATGTTTCATTACCAACAAG
 AACTTCCAGATTTTAGACATGGAAAATACCAGCCTTGATGATCCCTCCCTGGCGATTCTTTGCAAAGCGC
 TGCTCAGCCTGTTTGTAAACTCCGAAAACCTCATATTTACTTCTGTGTACTTTGGACATGATTCAGAATT
 ATTTAAGGCAGTTCTTCAACCCCTCATCTGAAACTTCTGAGCCTGTACGGCACTAGCCTCTCCCAGTCT
 GACATCAGACACCTGTGTGAGACGCTGAAACATCCAATGTGCAAGATAGAAGAGCTGATACTGGGAAAGT
 GTGACATCTCCAGTGAAGTTTGTGAAGACATCGCCTCCGTCTGGCCTGCAACAGCAAGCTGAAACACCT
 CTCCTTGGTAGAAAATCCCTTGAGGGACGAAGGAATGACGTTGCTGTGTGAAGCCCTGAAGCACTCACAC
 TGTGCCCTGGAGAGGCTGATGTTGATGTACTGCTGTCTCACCTCTGTCTCCTGTGACTCCATTTCCGAAG
 TCCTCTTGTGCAGTAAGTCCCTGTCCCTCTCGATCTGGGCTCAAATGCCCTGGAAGATAATGGAGTGGC
 ATCTCTGTGTGCAGCGCTGAAGCACCCAGGCTGCAGCATACGGGAGCTGTGGTTGATGGGCTGTTTCCTT
 ACTTCCGATTCTGTAAAGACATTGCTGTGTTCTTATTTGCAATGGGAAACTGAAGACCCTGAAACTTG
 GGCATAATGAAATAGGAGACACTGGTGTGAGACAGTTATGTGCAGCTTTCGAGCATCCTCACTGTAATT
 AGAGTGTCTCGGGCTGCAACCGTGTCCGATCACCCGTGCCTGCTGCGACGACATCGCCGACACTCATC
 GCCTGCAAAACACTGAGGAGCCTGAACCTCGACTGGATTGCCTTGGATGCTGATGCAGTGGTGGTGTGT
 GTGAGGCATTGAGCCACCCGACTGTGCCCTGCAGATGCTGGGGCTGCACAAATCTGGCTTTGATGAAGA
 AACTCAGAAGATCCTGATGTCTGTGGAAGAAAAATCCCCATCTGACCATTTACATGGACCTTGATT
 GACGAGGAATACAAGATCAGGGGTGTCTCCTC

ACGCGTACGCGGCCGCTCGAGCAGAAACTCATCTCAGAAGAGGATCTGGCAGCAAATGATATCCTGGATT
 ACAAGGATGACGACGATAAGGTTTAA

Protein Sequence:

>RC213515 representing NM_176820
 Red=Cloning site Green=Tags(s)

MAESFFSDFGLLWYLKELRKEEFWKFELKQPLEKFKLPIPWAEKASKEDVAKLLDKHYPGKQAW
 VTLNLFQINRKDLWTKAQEEMRNKLNPRKHMKETFQLIWEKETCLHVPEHFYKETMKNEYKELNDAYT
 AAARRHTVVLEPGDGGKTTLLRKVMDWAEGNLWDRFTFVFFLNVCENMNGIAETSLELLSRDWPES
 EKIEDIFSQPERILFIMDGFEQLKFNQLKADLSDWRQRQPMPIILSLLQKKMLPESSLLIALGKLAM
 QKHYFMLRHPKLIKLLGFSESEKSYFSYFFGEKSKALKVFNFRDNGPLFILCHNPFTCWLVCVQQR
 LERGEDLEINSQNTTYLYASFLTTFVKAGSQSFPKVNRRARLKSALAAEGIWYTFVFSHGDLRRNGL
 SESEGVMWVGMRLLRGGDCFAFMHLCIQEFCAAMFYLLKRPKDDPNPAIGSITQLVRASVVQPQTLLTQ
 VGIFMFGISTEEIVSMLETSFGFPLSKDLKQEIQCLESLSQCEADREIAFQELFIFGLFETQEKEFVTK
 VMNFFEEVFIYIGNIEHLVIASFCLKHCQHLTTLRMCVENIFPDDSGCISDYNEKLVYWRELCSMFITNK
 NFQILDMENTSLLDPSLAAILCKALAQPVCKLRKLIFTSVYFGHSELFKAVLHNPHLKLKLSLYGTSLSQS
 DIRHLCETLKHPMCKIEELILGKCDISSEVEDIASVLACNSKLNKHLNPLRDEGMTLLCEALKHSH
 CALERLMLMYCCLTSVSCDSISEVLLCSKSLSLLDLGSNALEDNGVASLCAALKHPGCSIRELWLMGCF
 TSDSCKDIAAVLICNGKLTLLKLGHNEIGDTGVRQLCAALQHPHCKLECLGLQTCPI TRACDDIAALI
 ACKTLRSLNLDWIALDADAVVVLCEALSHPDALQMLGLHKS GFDEETQKILMSVEEKIPHLTISHGPWI
 DEEYKIRGVLL

TRTRPLEQKLISEEDLAANDILDYKDDDDKV

Chromatograms:

https://cdn.origene.com/chromatograms/mg3828_a06.zip

Restriction Sites:

Sgfl-MluI

Cloning Scheme:


ACCN: NM_176820

ORF Size: 2973 bp

OTI Disclaimer: The molecular sequence of this clone aligns with the gene accession number as a point of reference only. However, individual transcript sequences of the same gene can differ through naturally occurring variations (e.g. polymorphisms), each with its own valid existence. This clone is substantially in agreement with the reference, but a complete review of all prevailing variants is recommended prior to use. [More info](#)

OTI Annotation: This clone was engineered to express the complete ORF with an expression tag. Expression varies depending on the nature of the gene.

Components: The ORF clone is ion-exchange column purified and shipped in a 2D barcoded Matrix tube containing 10ug of transfection-ready, dried plasmid DNA (reconstitute with 100 ul of water).

- Reconstitution Method:**
1. Centrifuge at 5,000xg for 5min.
 2. Carefully open the tube and add 100ul of sterile water to dissolve the DNA.
 3. Close the tube and incubate for 10 minutes at room temperature.
 4. Briefly vortex the tube and then do a quick spin (less than 5000xg) to concentrate the liquid at the bottom.
 5. Store the suspended plasmid at -20°C. The DNA is stable for at least one year from date of shipping when stored at -20°C.

RefSeq: [NM_176820.2](#), [NP_789790.2](#)

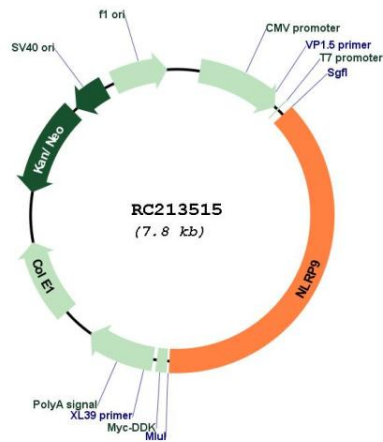
RefSeq Size: 3484 bp

RefSeq ORF: 2976 bp

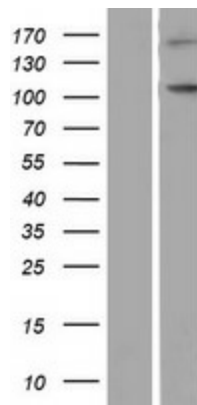
Locus ID: 338321
UniProt ID: [Q7RTR0](#)
Cytogenetics: 19q13.42
MW: 113.1 kDa

Gene Summary: The protein encoded by this gene belongs to the NALP protein family. Members of the NALP protein family typically contain a NACHT domain, a NACHT-associated domain (NAD), a C-terminal leucine-rich repeat (LRR) region, and an N-terminal pyrin domain (PYD). This protein may play a regulatory role in the innate immune system as similar family members belong to the signal-induced multiprotein complex, the inflammasome, that activates the pro-inflammatory caspases, caspase-1 and caspase-5. [provided by RefSeq, Jul 2008]

Product images:



Circular map for RC213515



Western blot validation of overexpression lysate (Cat# [LY406108]) using anti-DDK antibody (Cat# [TA50011-100]). Left: Cell lysates from untransfected HEK293T cells; Right: Cell lysates from HEK293T cells transfected with RC213515 using transfection reagent MegaTran 2.0 (Cat# [TT210002]).