

Product datasheet for **RC213508**

PNMA8B (NM_020709) Human Tagged ORF Clone

Product data:

Product Type:	Expression Plasmids
Product Name:	PNMA8B (NM_020709) Human Tagged ORF Clone
Tag:	Myc-DDK
Symbol:	PNMA8B
Synonyms:	PNMAL2
Mammalian Cell Selection:	Neomycin
Vector:	pCMV6-Entry (PS100001)
E. coli Selection:	Kanamycin (25 ug/mL)



[View online »](#)

ORF Nucleotide Sequence:

>RC213508 representing NM_020709
 Red=Cloning site Blue=ORF Green=Tags(s)

TTTTGTAATACGACTCACTATAGGGCGGCCGGAATTCGTCGACTGGATCCGGTACCGAGGAGATCTGCC
 GCC**CGCATCGC**C

ATGGCCATGAGCCTTTTGCAGGACTGGTCCGGAGCCTGGACGTGGACGCGCACAGGGCCCTGCTGGTCA
 CCGGCATCCCGAGGGCCTGGAGCAGGCAGACGTGCAAGCCGTCCTGCAGCCGACCCTCCTGCCCTGGG
 CACGTTACAGTTGCGACACATGAAGCCTTTGATGAACGAGAAGGCCAGGCCGCCCTGGTGGAGTTTGTG
 GAGGACGTCAATCACGCTGCCATCCCAGGGAGATCCCAGGCAAGGATGGGGTCTGGAGGGTTCTGTGGA
 AGGACCGTGCAGCAGGACACGAGGGTCTGAGGCAGATGAGACGCCTGCTGCTGGATGACGGGCCACGCA
 GGCCGCGGAGGCTGGGACCCCGGGGAGGCACCCACCCCTCCCGCTTCGGAGACGACGGCCAGGATTCT
 GGGGAGGTAACAGGGCAGGCTGGCTCGCTTCTTGGGGCAGCCAGGAACCAAGGAGGGCCGTCGGGGTC
 GCAGAAACAGAACCAGACGCAACAGGTTGACCCAGAAGGGCAAGAAGAGAAGCCGAGGAGGACGGCCGTC
 TGCTCCCGCAGGAGTGAGGCCGAGGACTTCCGACGAGAGCCTGGGCATCGTGATCGAGGAGATCGAC
 CAGGGCGACCTGAGCGGAGAAGAGGACCAGAGCGCGCTGTACGCCACGCTGCAGGCCGCTGCCAGGGAGC
 TGGTTAGGCAGTGGGCGCCCTGCAACTCCGAGGGGAAGAAGACGGTCCCGCGAGTTCTTGGCTCTGGT
 CACCGTACCCGACAAATCGAAGAAAGAAGAGGCAGAGAAGGAGCCAGCTGGGGCCGAATCCATCCGCTTG
 AACACCAAGAAGACAAAATGGTGTCCCGACTTAGTGGCCCTGCTGGCTGTGAGAGACACCCCGGACG
 AGGAGCCGGTGGACAGCGACACTTCGGAGAGCGACTCGCAGGAAAGTGGGGACCAAGAAACAGAGGAGTT
 GGATAATCCTGAGTTCGTGGCCATTGTGGCCTATACCGACCCGTCGGACCCCTGGGCCGGGAGGAGATG
 TTGAAAATCGCTTCTGTTATCGAGTCGCTGGGCTGGAGCGACGAGAAAGACAAGCGAGACCCCTCCGAC
 AGGTCTTGTCCGTCATGTCCAAGGACACTAACGGGACCCGCGTGAAGGTGAAGAGGGCGGGCCCGAGGT
 GGACGCCGTGGTCTGCGCAAGGCCGGGATGACGGGGACCTCCGGGAGTGCATTTCCACCTTGGCGCAG
 CCGGATCTCCCTCCCGAGCGAAGAAGGCTGGGCGTGGCCTTTCGGGGCTGGAGCGAGCACCGTGAGG
 ACGAAGGGGGTCTTCTGGAGCTGGTGGCCTCCTGGCTGCCAGGACATGGCGGAGGTGATGAAGGAGGA
 AAAAGAAAACGCCTGGGAAGGCGGGAAGTACAAATACCCCAAAGGCAAACCTGGGGAGGTATTGGCGCTC
 CTGGCCGCCCGGGAACATGGGGTCCAACGAGGGGTGGAGGAGGCTTCGGACGAACAGTCCGAGGAGG
 AGTCGGAGGACACCGAGAGCGAGGCGTCGGAGCCGAGGACAGGGCATCCAGGAAGCCCCGGGCCAAGAG
 GCGCGCACGGCCCCAGGGCCTGACTCCGGCCGGCGCCTCCACCGCTTCCGGGGCCCGAAAACC
 CGCGCGGGCGGCGAGGCGGAGCCGGGGCGTCACTCCCGAGAAGAAAGCCGGGAGCCGGGGCTCGGCC
 AGGACGACGCCCGCAGGAAGCAGGAAGAAGAAGGGGAGCGCGGGCCCGGGGCCATGCCAGGGCAGGCGA
 GGCCAAGGGCCAGGCGCCACTGGATCCAAGGCCGCGCGGGAAGAAGGCCGTCGGGGCCGGAGGCTG
 CCCCTAAATGCCGC

ACGCGTACGCGGCCGCTCGAGCAGAACTCATCTCAGAAGAGGATCTGGCAGCAAATGATATCCTGGATT
 ACAAGGATGACGACGATAAGGTTTAA

Reconstitution Method:

1. Centrifuge at 5,000xg for 5min.
2. Carefully open the tube and add 100ul of sterile water to dissolve the DNA.
3. Close the tube and incubate for 10 minutes at room temperature.
4. Briefly vortex the tube and then do a quick spin (less than 5000xg) to concentrate the liquid at the bottom.
5. Store the suspended plasmid at -20°C. The DNA is stable for at least one year from date of shipping when stored at -20°C.

RefSeq: [NM_020709.3](#)

RefSeq Size: 4739 bp

RefSeq ORF: 1908 bp

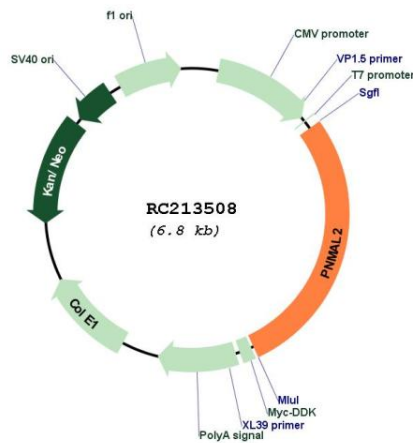
Locus ID: 57469

UniProt ID: [Q9ULN7](#)

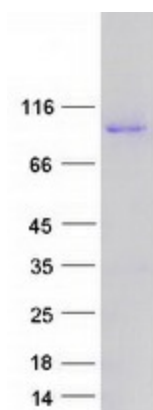
Cytogenetics: 19q13.32

MW: 68.4 kDa

Product images:



Circular map for RC213508



Coomassie blue staining of purified PNMA8B protein (Cat# [TP313508]). The protein was produced from HEK293T cells transfected with PNMA8B cDNA clone (Cat# RC213508) using MegaTran 2.0 (Cat# [TT210002]).