

Product datasheet for **RC213502**

Cytochrome P450 2E1 (CYP2E1) (NM_000773) Human Tagged ORF Clone

Product data:

Product Type:	Expression Plasmids
Product Name:	Cytochrome P450 2E1 (CYP2E1) (NM_000773) Human Tagged ORF Clone
Tag:	Myc-DDK
Symbol:	Cytochrome P450 2E1
Synonyms:	CPE1; CYP2E; P450-J; P450C2E
Mammalian Cell Selection:	Neomycin
Vector:	pCMV6-Entry (PS100001)
E. coli Selection:	Kanamycin (25 ug/mL)



[View online »](#)

ORF Nucleotide Sequence:

>RC213502 representing NM_000773.
 Blue=ORF Red=Cloning site Green=Tag(s)

```

GCTCGTTTAGTGAACCGTCAGAATTTTGTAAACGACTCACTATAGGGCGGCCGGGAATTCGTGACTG
GATCCGGTACCGAGGAGATCTGCCGCCCGCATCGCC
ATGTCTGCCCTCGGAGTCAACCGTGGCCCTGCTGGTGTGGGCGCCTTCTCTGCTGGTGTCCATGTGG
AGGCAGGTGCACAGCAGCTGGAATCTGCCCCAGGCCCTTCCCGCTTCCATCATCGGGAACCTCTTC
CAGTTGGAATTGAAGAATATCCCAAGTCTTACCCCGTTGGCCAGCGCTTCGGGCGGTGTTACG
CTGTACGTGGGCTCGCAGCGCATGGTGGTATGCACGGCTACAAGCGGTGAAGGAAGCGTCTGGAC
TACAAGGACGAGTTCTCGGGCAGAGGCGACCTCCCGCGTTCCATGCGCACAGGGACAGGGGAATCATT
TTAATAATGGACCTACCTGGAAGGACATCCGCGGTTTTCCCTGACCACCCTCCGGAATATGGGATG
GGGAAACAGGGCAATGAGAGCCGATCCAGAGGGAGGCCACTTCTGCTGGAAGCACTCAGGAAGACC
CAAGGCCAGCCTTTCGACCCACCTTCTCATCGGCTGCGCGCCTGCAACGTATAGCCGACATCCTC
TTCGCAAGCATTGACTACAATGATGAGAAGTTTCAAGGCTGATGATTTGTTAATGAGAAGCTTC
CACCTACTCAGCACTCCCTGGCTCCAGCTTACAATAATTTCCAGCTTCTACTACTTGCCTGGA
AGCCACAGAAAAGTCATAAAAAATGTGGCTGAAGTAAAAGAGTATGTGTCTGAAAGGGTGAAGGAGCAC
CATCAATCTCTGGACCCAACTGTCCCGGACCTCACCGACTGCCTGCTCGTGGAAATGGAGAAGGAA
AAGCACAGTGCAGAGCGCTGTACACAATGGACGGTATCACCGTACTGTGGCCGACCTGTTCTTTGCG
GGGACAGAGACCACCAGCAACTCTGAGATATGGGCTCCTGATTCTCATGAAATACCCTGAGATCGAA
GAGAAGCTCCATGAAGAAATGACAGGGTGATTGGGCCAAGCCGAATCCCTGCCATCAAGGATAGGCAA
GAGATGCCCTACATGGATGCTGTGGTGCATGAGATTACGCGGTTCCATCACCTCGTCCCTCAACCTG
CCCCATGAAGCAACCCGAGACACCATTTTTCAGAGGATACCTCATCCCCAAGGGCACAGTCGTAGTGCCA
ACTCTGGACTCTGTTTCGTATGACAACCAAGAATTTCTGATCCAGAAAAGTTTAAAGCCAGAACACTTC
CTGAATGAAAATGGAAAAGTTCAAGTACAGTGACTATTTCAAGCCATTTTCCACAGGAAAACGAGTGTGT
GCTGGAGAAGGCCTGGCTCGCATGGAGTTGTTCTTTTGTGTGTGCCATTTTGCAGCATTTAATTTG
AAGCCTCTCGTTGACCCAAAGGATATCGACCTCAGCCCTATACATATTGGGTTTGCTGTATCCACCA
CGTTACAAACTCTGTGTCATTCCCCGCTCA
ACGCGTACGCGGCCGCTCGAGCAGAAACTCATCTCAGAAGAGGATCTGGCAGCAAATGATATCCTGGAT
TACAAGGATGACGACGATAAGGTTTAAACGGCCGGC
  
```

Protein Sequence:

>Peptide sequence encoded by RC213502
 Blue=ORF Red=Cloning site Green=Tag(s)

```

MSALGVTVALLVWAAFLLLVSMWRQVHSSWNLPDPFPLPIIGNLFQLELKNIPKSFTRLAQRFGPVFT
LYVGSQRMVVMHGYKAVKEALLDYKDEFSGRGDLPFAHHRDRGIIFNNGPTWKDIRRFLTLRLNYGM
GKQGNESRIQREAHFLEALRKTQGQPFDPFTLIGCAPCNVIADILFRKHFDYNDEKFLRLMYLFNENF
HLLSTPWLQLYNNFPSFLHYLPGSHRVIKNVAEVKEYVSERVKEHHQSLDPNCPDLDLCLLVEMEKE
KHAERLYTMDGITVTVDLFFAGTETTSTLRYGLLILMKYPEIEEKLHEEIDRVIGPSRIPAIAKDRQ
EMPYMDAVVHEIQRFITLVPSNLPHEATRDIFRGLYIPKGTVVVPTLDSVSYDNQEPDPEKFKPEHF
LNENGFKYSDFKPFSTGKRVCAEGELARMELFLLLCAILQHFNLKPLVDPKIDLSPIHIGFGCIPP
RYKLCVIPRS
TRTRPLEQKLISEEDLAANDILDYKDDDDKV
  
```

Recombinant protein using RC213502 also available, [TP313502M](#)

Restriction Sites:

Sgfl-Mlul

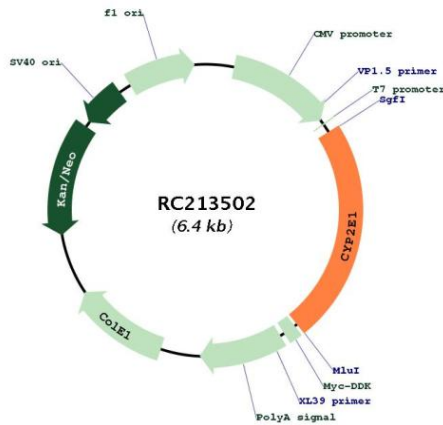
Protein Families: Druggable Genome, P450, Transmembrane

Protein Pathways: Arachidonic acid metabolism, Drug metabolism - cytochrome P450, Linoleic acid metabolism, Metabolic pathways, Metabolism of xenobiotics by cytochrome P450

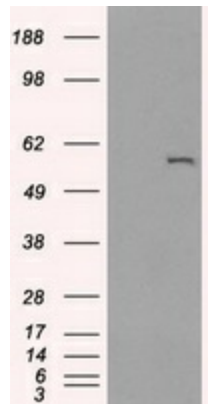
MW: 56.8 kDa

Gene Summary: This gene encodes a member of the cytochrome P450 superfamily of enzymes. The cytochrome P450 proteins are monooxygenases which catalyze many reactions involved in drug metabolism and synthesis of cholesterol, steroids and other lipids. This protein localizes to the endoplasmic reticulum and is induced by ethanol, the diabetic state, and starvation. The enzyme metabolizes both endogenous substrates, such as ethanol, acetone, and acetal, as well as exogenous substrates including benzene, carbon tetrachloride, ethylene glycol, and nitrosamines which are premutagens found in cigarette smoke. Due to its many substrates, this enzyme may be involved in such varied processes as gluconeogenesis, hepatic cirrhosis, diabetes, and cancer. [provided by RefSeq, Jul 2008]

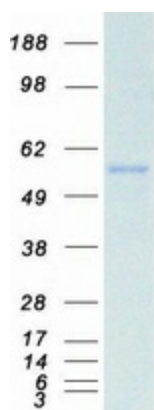
Product images:



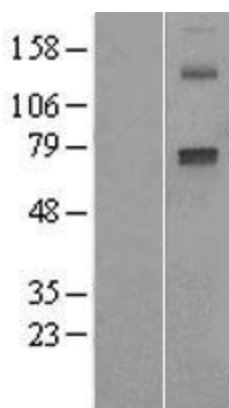
Circular map for RC213502



HEK293T cells were transfected with the pCMV6-ENTRY control (Cat# [PS100001], Left lane) or pCMV6-ENTRY CYP2E1 (Cat# RC213502, Right lane) cDNA for 48 hrs and lysed. Equivalent amounts of cell lysates (5 ug per lane) were separated by SDS-PAGE and immunoblotted with anti-CYP2E1 (Cat# [TA500734]). Positive lysates [LY400264] (100ug) and [LC400264] (20ug) can be purchased separately from OriGene.



Coomassie blue staining of purified CYP2E1 protein (Cat# [TP313502]). The protein was produced from HEK293T cells transfected with CYP2E1 cDNA clone (Cat# RC213502) using MegaTran 2.0 (Cat# [TT210002]).



Western blot validation of overexpression lysate (Cat# [LY400264]) using an anti-DDK antibody (Cat# [TA50011-100]). Left: Cell lysates from untransfected HEK293T cells; Right: Cell lysates from HEK293T cells transfected with RC213502 using transfection reagent MegaTran 2.0 (Cat# [TT210002]).