

Product datasheet for **RC213494**

PYHIN1 (NM_152501) Human Tagged ORF Clone

Product data:

Product Type:	Expression Plasmids
Product Name:	PYHIN1 (NM_152501) Human Tagged ORF Clone
Tag:	Myc-DDK
Symbol:	PYHIN1
Synonyms:	IFIX
Mammalian Cell Selection:	Neomycin
Vector:	pCMV6-Entry (PS100001)
E. coli Selection:	Kanamycin (25 ug/mL)



[View online »](#)

ORF Nucleotide Sequence:

>RC213494 representing NM_152501
 Red=Cloning site Blue=ORF Green=Tags(s)

TTTTGTAATACGACTCACTATAGGGCGGCCGGAATTCGTCGACTGGATCCGGTACCGAGGAGATCTGCC
 GCC**CGGATCGCC**

ATGGCAAATAACTACAAGAAAATTGTTCTACTGAAAGGATTAGAGGTCATCAATGATTATCATTTTAGAA
 TTGTTAAGTCCTTACTGAGTAACGATTTAAAACCTAATCCAAAAATGAAAGAAGAGTATGACAAAATTC
 GATTGCTGACTTGATGGAGGAAAAGTTCCAGGTGATGCCGTTTGGGCAAATAATAGAAATTCCTCAA
 GAAATACCAACTGGGAGACCTTGTGAACTCTAAAAGAGAAAAGTAAAAGTTGCAATAAAATG
 AATCCATTCCAGTCAAAGGAATAATCCCATCTAAAAGACGAAACAGAAAGAGTATCCTGCTACACC
 TGCATGCACCCCAAGCAACCGTCTCACAGCTAAAGGAGCAGAGGAGACTTTGGACCTCAGAAAAGAAA
 AAACCATCTGAAGAAGAGACTGGAACAAAAGGAGTAAGATGTCAAAGAGCAGACTCGGCCTTCTGCT
 CTGCAGGAGCCAGCACGTCCACAGCCATGGGCCGTTCCACCTCCAGACCTCATCATCAGCTCCACC
 CAACACTTCTCAACTGAGAGCCTAAAACCATTTGGCCAACCGTCACGCAACTGCCAGTAAAAATATTTTC
 CGAGAAGACCAATAATCGCGATGGTACTAAATGCAACAAAAGTATTTAAATATGAATCCTCAGAAAATG
 AGCAAAGAAGAATGTTTCATGCTACAGTGGCTACGCAGACACAGTTCTTTTCATGTGAAGTTTTAAACAT
 CAACTTGAAGAGGAAATTCATTAAGAGAAATCATCATTATATCAAATATTCCAAACGTAATAGTCTC
 CTAGAGGTGAATGAAGCCTCTTCTGTATCTGAAGCTGGTCTGACCAAACGTTTGAAGTTCCAAAGGACA
 TCATCAGAAGAGCAAAGAAAATCCGAAGATCAATATTCTTCAAAAACAACTTCAGGATATATTGTATA
 TGGATTATTTATGCTACATACGAAAATTGTAATAGGAAGACGACAATCTATGAAATTGAGGATAAAACA
 GGAAGTATGGCTGTAGTAGGAAAAGGAGAATGCCACAATATCCCTGTGAAAAGGAGATAAGCTTCGAC
 TCTTCTGCTTTCGACTGAGAAAAGGAAAATATGTCAAACATGATGTCAGAAATGCATAGTTTCATCCA
 GATACAGAAAATACAAACCAGAGAAGCCATGACTCCAGGAGCATGGCACTACCCAGGAACAGAGTCAG
 CATCCAAAACCTTCAGAGGCCAGCAACCCCTACCTGAAAGCCATCTCAAGACTCCTCAGATGCCACCAA
 CAACCCCATCCAGCAGTTCCTTACCAAGAAGGATGAAACCCACCCAGGAGCACAGTCATCGCTGCAAA
 CTTTAGAATCACCTACCAACTGTGGCCCTCCTCTTTCTTCTGACACTCCACCAACCGCCATCCAGCA
 GTTCT

ACGCGTACGCGGCCGCTCGAGCAGAACTCATCTCAGAAGAGGATCTGGCAGCAATGATATCCTGGATT
 ACAAGGATGACGACGATAAGGTTTAA

Protein Sequence:

>RC213494 representing NM_152501
 Red=Cloning site Green=Tags(s)

MANNYKKIVLLKGLEVIN DYHFRI VKSLLSNDLKNPKMKEEYDKIQIADLMEEKFPGDAGLGKLI EFFK
 EIPTLGD LAETL KREKLKVANKIESIPVKG IIPSKKTKQKEVYPATPACTPSNRLTAKGAEETLGPQKRK
 KPSEEEETGTRSKMSKEQTRPSCSAGASTAMGRSPPPQTSSSAPPNTSSTESLKLPLANRHATASKNIF
 REDPIIAMVLNATKVFKYESSENEQRMFHATVATQTQFFHVKVLNINLKRKFICKRIIIISNYSKRNSL
 LEVNEASSVSEAGPDQTFEVPKDIIRRAKKIPKINILHKQTSYIVYGLFMLHTKIVNRKTTIYEIQDKT
 GSMAVVGKGECHNIPCEKGDKLRLFCFRLRKRENMSKLMSEMHSFIQIQKNTNQRSHDSRSMALPQEQSQ
 HPKPSEASTTLPESHKTPQMPPTTPSSSFTKKDETHPGAQSSPANFRITSPTVAPPLSSDSTNRHPA
 VP

TRTRPLEQKLISEEDLAANDILDYKDDDDKV

Chromatograms:

https://cdn.origene.com/chromatograms/mk6272_a02.zip

Restriction Sites:

Sgfl-Mlul

Cloning Scheme:


ACCN: NM_152501

ORF Size: 1476 bp

OTI Disclaimer: The molecular sequence of this clone aligns with the gene accession number as a point of reference only. However, individual transcript sequences of the same gene can differ through naturally occurring variations (e.g. polymorphisms), each with its own valid existence. This clone is substantially in agreement with the reference, but a complete review of all prevailing variants is recommended prior to use. [More info](#)

OTI Annotation: This clone was engineered to express the complete ORF with an expression tag. Expression varies depending on the nature of the gene.

Components: The ORF clone is ion-exchange column purified and shipped in a 2D barcoded Matrix tube containing 10ug of transfection-ready, dried plasmid DNA (reconstitute with 100 ul of water).

Reconstitution Method:

1. Centrifuge at 5,000xg for 5min.
2. Carefully open the tube and add 100ul of sterile water to dissolve the DNA.
3. Close the tube and incubate for 10 minutes at room temperature.
4. Briefly vortex the tube and then do a quick spin (less than 5000xg) to concentrate the liquid at the bottom.
5. Store the suspended plasmid at -20°C. The DNA is stable for at least one year from date of shipping when stored at -20°C.

RefSeq: [NM_152501.5](#)

RefSeq Size: 1749 bp

RefSeq ORF: 1479 bp

Locus ID: 149628

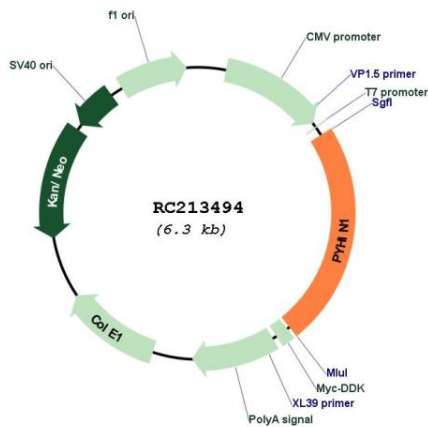
UniProt ID: [Q6K0P9](#)

Cytogenetics: 1q23.1

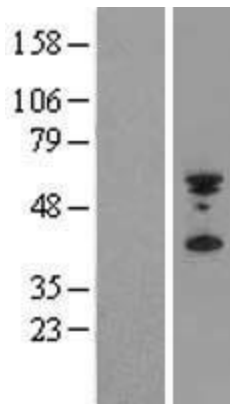
MW: 54.9 kDa

Gene Summary: The protein encoded by this gene belongs to the HIN-200 family of interferon-inducible proteins that share a 200-amino acid signature motif at their C-termini. HIN200 proteins are primarily nuclear and are involved in transcriptional regulation of genes important for cell cycle control, differentiation, and apoptosis. Downregulation of this gene is associated with breast cancer. This protein acts as a tumor suppressor by promoting ubiquitination and subsequent degradation of MDM2, which leads to stabilization of p53/TP53. Alternatively spliced transcript variants encoding different isoforms have been described for this gene. [provided by RefSeq, Aug 2011]

Product images:



Circular map for RC213494



Western blot validation of overexpression lysate (Cat# [LY407507]) using anti-DDK antibody (Cat# [TA50011-100]). Left: Cell lysates from untransfected HEK293T cells; Right: Cell lysates from HEK293T cells transfected with RC213494 using transfection reagent MegaTran 2.0 (Cat# [TT210002]).